

MAGNUM SRA SERIES

PARTS MANUAL



MAGNUM 300SRA
MAGNUM 420SRA
MAGNUM 480SRA

Bucyrus Equipment Co., Inc.
PO Box 156, 209 Central
Hillsdale, Ks 66036
1-800-330-0857
www.magnumenp.com

RE-ORDER NUMBER: SRAMANUAL
REVISION: SRA-100025



SRA SERIES

MAGNUM 300SRA/420SRA/480SRA PARTS MANUAL

The purpose of this manual is for parts identification of the Magnum SR series harvester. This manual is not to be used for assembly. This manual includes parts lists and illustrations of all available replacement parts for the Magnum SR series harvesters. A table of contents is placed at the beginning of the manual for location of specific parts. Keep this manual available for reference in the shop area.

At the time of publication all information contained in this manual was technically correct. However, all materials and specifications are subject to change without notice.

Comments and suggestions about this manual may be directed to: Bucyrus Equipment Co., Inc., PO Box 156-209 Main, Hillsdale, KS 66036. Phone 1-800-330-0857

©Copyright 2005 BECI. All information contained within this publication is based on the latest product information at the time of publication. Due to constant improvements in the design and quality of production components, some minor discrepancies may result between the actual vehicle and the information presented in this publication. Depictions and/or procedures in this publication are intended for reference use only. No liability can be accepted for omissions or inaccuracies. Any reprinting or reuse of the depictions and/or procedures contained within, whether whole or in part, is expressly prohibited. Printed in U.S.A.

TABLE OF CONTENTS

Section 1	420/480 Floating Heads
Section 2	420/480 Solid Heads / Coulter Option
Section 3	300 Solid Heads / Coulter Option
Section 4	Depth Control
Section 5	1 st Conveyor
Section 6	2 nd Conveyor
Section 7	Chop Offs
Section 8	Net Dispenser
Section 9	Tube Racks
Section 10	Control Panel Box
Section 11	Wheel/Hub & Pulse Pickup Assembly
Section 12	Auto Steer
Section 13	Hydraulic Components
Section 14	Flow Control Valve
Section 15	Chop Valve

Section 16 Accumulator

Section 17 Hydraulic Tank & Increaser

Section 18 Hose/Hardline Mounts

Section 19 Electrical Components

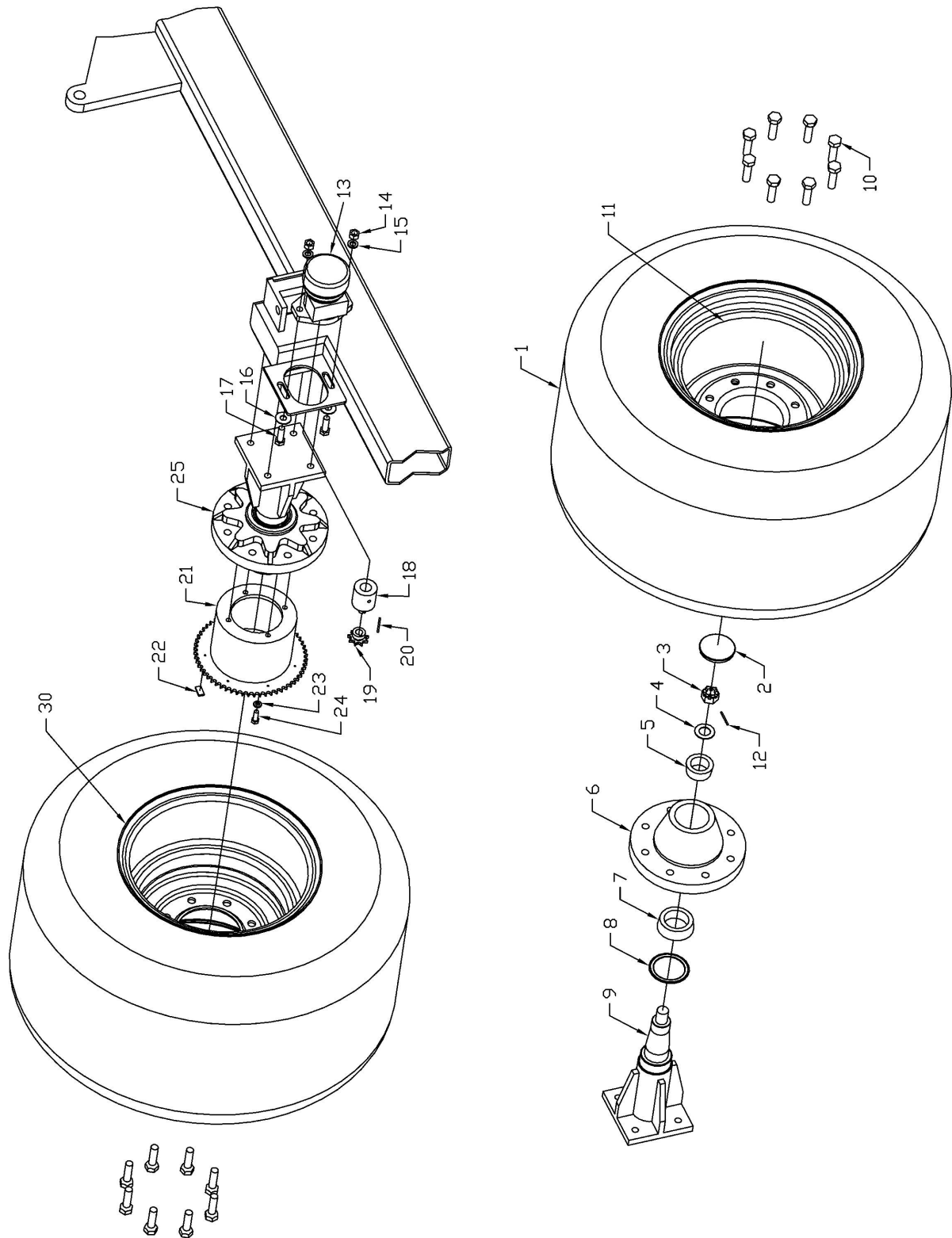
WHEEL/HUB & PULSE PICKUP

Parts List			
ITEM	QTY	PART NUMBER	DESCRIPTION
1	2	33X15.50-16.5	Tire
2	2	DU008	Dust cap
3	2	DU007-2	Spindle nut
4	2	DU006	Washer
5	2	DU003	Outer bearing
6	1	DU004-LH (Left side)	Hub
7	2	DU005	Inner bearing
8	2	DU002	Seal
9	2	W888A-480	Spindle
10	16	58LUG	Lug bolt
11	1	16.5X12 DC WHEELS	Rim
12	2	65078	Cotter pin
13	1	SRA-PP900 (See Note 1) SRA-PP901	Ground Speed Pulse Pickup
14	2	36310	1/2"-13 Zinc Finish Grade 5 Finished Hex Nut
15	2	33895	1/2" Yell Zinc Hi Alloy Med Split Lock Washer
16	2	33817	1/2" Thru-Hard Yellow Zinc SAE Flat Washer
17	2	13209	1/2"-13x1-1/2" Zinc SAE J429 Gr 5 Cap Screw
18	1	SRA-PP202	Sprocket Shaft (serial # earlier than 109)
	1	SRA-PP203	Sprocket Shaft (serial # 109 and later)
19	1	40BS9 5/8	Sprocket
20	1	3/16X0.625SQKEY	Key stock
21	1	SRA-PP200	Sprocket/Hub
22	7	10012	Magnet & rivet
23	4	33893	3/8" Yell Zinc Hi Alloy Med Split Lock Washer
24	4	13105	3/8"-16x1" Zinc SAE J429 Gr 5 Hex Cap Screw
25	1	SRA-PP201	Pulse Pickup Hub
26	1	SRA-PP400	Pulse Pickup Chain
27	1	40-2	Chain Master link
28	1	151-5663 MODIFIED (See Note 1) BES0146	Ground Speed Sensor
29	1	SRA-A1 (See Note 2) SRA-A1-2	Ground Speed Sensor Cable
30	1	SRA-WHR100	SRA WHEEL PULSE PICK UP

Notes:

1. Used only on machines up to serial number 106.
2. Used on machines up to serial number 106, and with SRA-A1-2 on serial number after 106.





WHEATBELLS

[illegible]