

# **MAGNUM M SERIES DIESEL SOD INSTALLER PARTS MANUAL**



**MAGNUM M4226D  
MAGNUM M4826D**

Bucyrus Equipment Co., Inc.  
Box 156, 209 Main  
Hillsdale, Ks 66036  
1-800-330-0857  
[www.magnumenp.com](http://www.magnumenp.com)

RE-ORDER NUMBER: IND-MANUAL  
REVISION: IN-100007





## **M SERIES**

# **MAGNUM M4226D / M4826D PARTS MANUAL**

The purpose of this manual is for parts identification of the Magnum M series sod installer. This manual is not to be used for assembly. This manual includes parts lists and illustrations of all available replacement parts for the Magnum M series sod installer. A table of contents is placed at the beginning of the manual for location of specific parts. Keep this manual available for reference in the shop area.

At the time of publication all information contained in this manual was technically correct. However, all materials and specifications are subject to change without notice.

Comments and suggestions about this manual may be directed to: Bucyrus Equipment Co., Inc., PO Box 156-209 Main, Hillsdale, KS 66036. Phone 1-800-330-0857

© Copyright 2013 BECI. All information contained within this publication is based on the latest product information at the time of publication. Due to constant improvements in the design and quality of production components, some minor discrepancies may result between the actual vehicle and the information presented in this publication. Depictions and/or procedures in this publication are intended for reference use only. No liability can be accepted for omissions or inaccuracies. Any reprinting or reuse of the depictions and/or procedures contained within, whether whole or in part, is expressly prohibited. Printed in U.S.A.



## **TABLE OF CONTENTS**

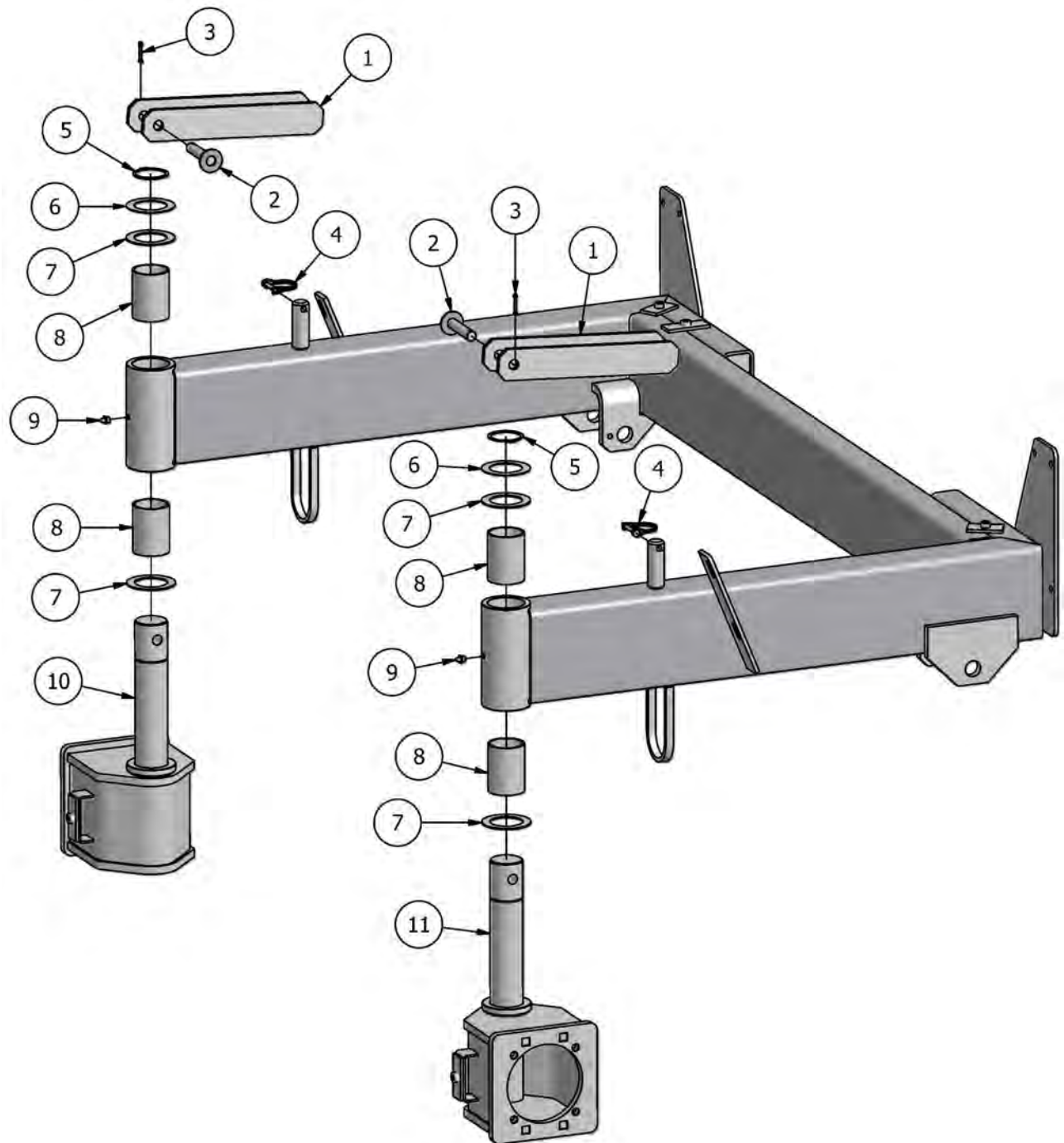
<b>Section 1 .....</b>	<b>Brake / Wheel / Hub</b>
<b>Section 2 .....</b>	<b>Decals</b>
<b>Section 3 .....</b>	<b>Electrical</b>
<b>Section 4 .....</b>	<b>Engine</b>
<b>Section 5 .....</b>	<b>Front Spindle</b>
<b>Section 6 .....</b>	<b>Hydraulics</b>
<b>Section 7 .....</b>	<b>Hydrostat / Roll Lift Controls</b>
<b>Section 8 .....</b>	<b>Operator Platform</b>
<b>Section 9 .....</b>	<b>Roll Lift</b>
<b>Section 10 .....</b>	<b>Shields</b>
<b>Section 11 .....</b>	<b>Steering Axle</b>



## FRONT SPINDLE

FRONT SPINDLE - PARTS LIST			
ITEM	QTY	PART NUMBER	DESCRIPTION
1	2	IN-FSP110	FRONT SPINDLE LOCK
2	2	IN-FSP113	FRONT SPINDLE LOCK PIN
3	2	65078	COTTER PIN
4	2	P7950	SNAP PIN
5	2	11569-00440	EXTERNAL SNAP RING
6	2	11122123	2"-18 GA. WASHER
7	4	11122103	2"-14 GA. WASHER
8	4	EP3236-48	BUSHING
9	2	58794	GREASE FITTING
10	1	IN-FSP100L	FRONT SPINDLE, LEFT
11	1	IN-FSP100R	FRONT SPINDLE, RIGHT

## FRONT SPINDLE



---

This image shows a full page of blank, lined paper. It features approximately 28 horizontal black lines spaced evenly across the page, typical of standard notebook paper. The lines are thin and extend from the left edge to the right edge. There are no margins, text, or other markings on the page.

