

MAGNUM SRA SERIES

PARTS MANUAL



MAGNUM 300SRA
MAGNUM 420SRA
MAGNUM 480SRA

Bucyrus Equipment Co., Inc.
PO Box 156, 209 Central
Hillsdale, Ks 66036
1-800-330-0857
www.magnumenp.com

RE-ORDER NUMBER: SRAMANUAL
REVISION: SRA-100025



SRA SERIES

MAGNUM 300SRA/420SRA/480SRA PARTS MANUAL

The purpose of this manual is for parts identification of the Magnum SR series harvester. This manual is not to be used for assembly. This manual includes parts lists and illustrations of all available replacement parts for the Magnum SR series harvesters. A table of contents is placed at the beginning of the manual for location of specific parts. Keep this manual available for reference in the shop area.

At the time of publication all information contained in this manual was technically correct. However, all materials and specifications are subject to change without notice.

Comments and suggestions about this manual may be directed to: Bucyrus Equipment Co., Inc., PO Box 156-209 Main, Hillsdale, KS 66036. Phone 1-800-330-0857

©Copyright 2005 BECI. All information contained within this publication is based on the latest product information at the time of publication. Due to constant improvements in the design and quality of production components, some minor discrepancies may result between the actual vehicle and the information presented in this publication. Depictions and/or procedures in this publication are intended for reference use only. No liability can be accepted for omissions or inaccuracies. Any reprinting or reuse of the depictions and/or procedures contained within, whether whole or in part, is expressly prohibited. Printed in U.S.A.

TABLE OF CONTENTS

Section 1	420/480 Floating Heads
Section 2	420/480 Solid Heads / Coulter Option
Section 3	300 Solid Heads / Coulter Option
Section 4	Depth Control
Section 5	1 st Conveyor
Section 6	2 nd Conveyor
Section 7	Chop Offs
Section 8	Net Dispenser
Section 9	Tube Racks
Section 10	Control Panel Box
Section 11	Wheel/Hub & Pulse Pickup Assembly
Section 12	Auto Steer
Section 13	Hydraulic Components
Section 14	Flow Control Valve
Section 15	Chop Valve

Section 16 Accumulator

Section 17 Hydraulic Tank & Increaser

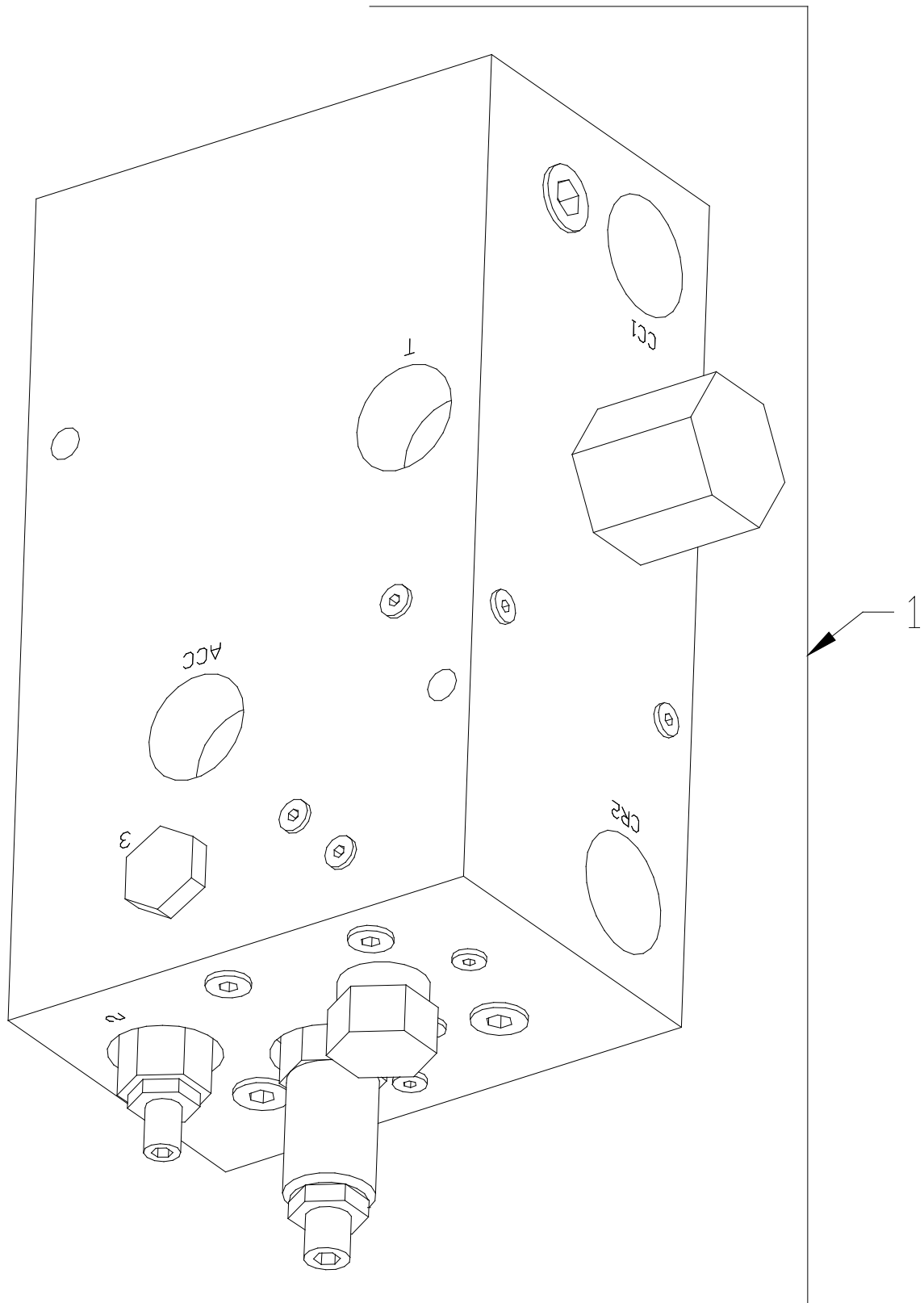
Section 18 Hose/Hardline Mounts

Section 19 Electrical Components

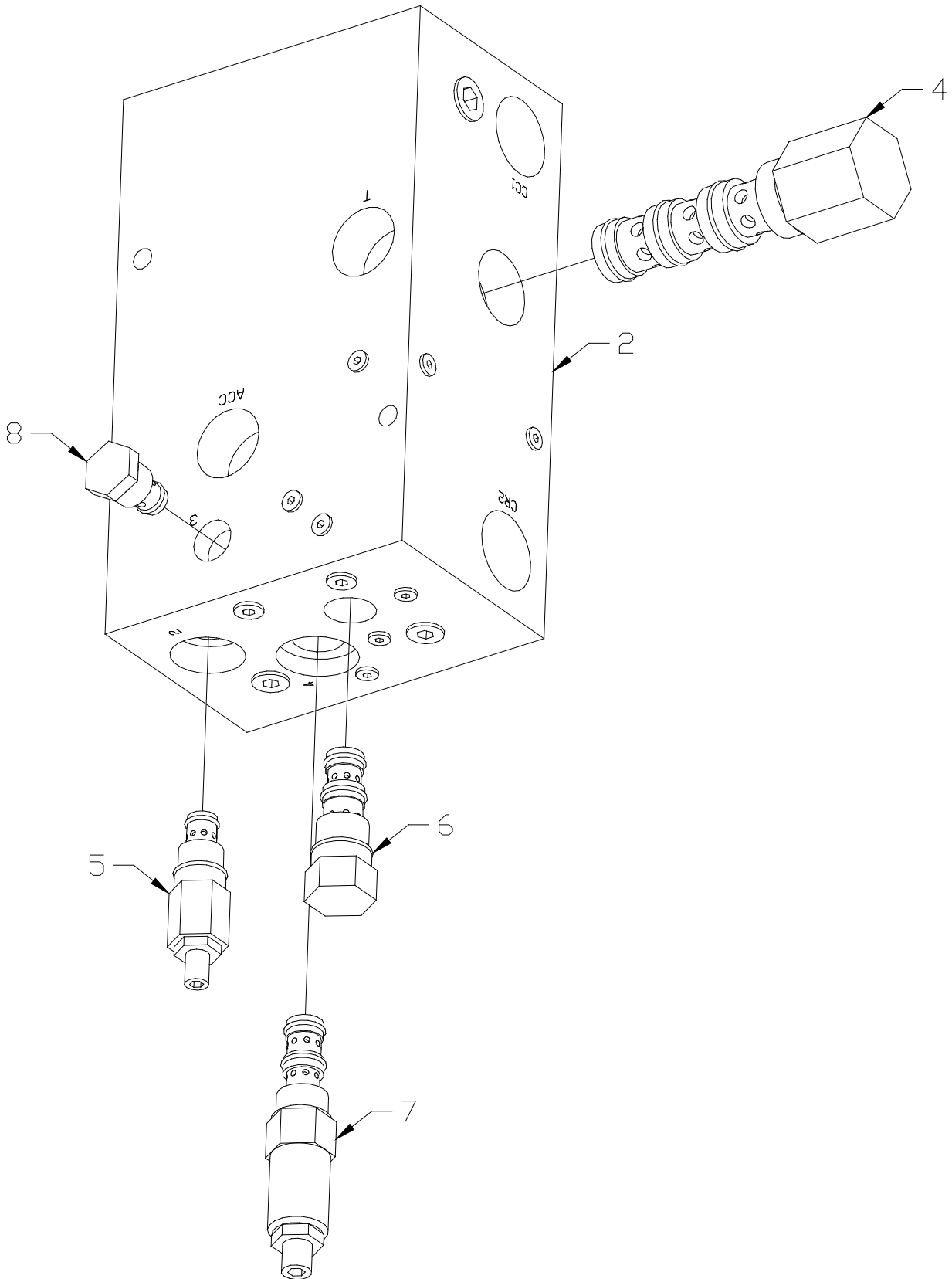
CHOP VALVE

Parts List			
ITEM	QTY	PART NUMBER	DESCRIPTION
1	1	FV-7503	Chop valve assy
2	1	FV-7053-M1	Valve body
3			
4	1	CP722-5-B-0-080-S3	Logic valve
5	1	J02E2ZN	Flow control valve
6	1	R04C3-10-0N	Diverter valve
7	1	CP230-1-B-0-E-C	Pressure relief valve
8	1	CP108-7-B-0-005	Check valve
Repair Kits			
	1	SK30500N-1	Seal kit for flow control valve (item 5)
	1	120221	Seal kit for check valve (item 3)
	1	120570	Seal kit for pressure relief valve (item 7)
	1	SK30505N-1	Seal kit for diverter valve (item 6)
	1	120025	Seal kit for logic valve (item 4)

CHOP VALVE



CHOP VALVE



CHOP VALVE

This image shows a full page of blank handwriting practice paper. It features approximately 28 horizontal blue lines spaced evenly down the page. There are no margins, text, or other markings present.