

MAGNUM A SERIES DIESEL SOD INSTALLER PARTS MANUAL



**MAGNUM A42D
MAGNUM A48D**

Bucyrus Equipment Co., Inc.
Box 156, 209 Main
Hillsdale, Ks 66036
1-800-330-0857
www.magnumenp.com

RE-ORDER NUMBER: 2IND-MANUAL
REVISION: 2IND-100010



A SERIES

MAGNUM A42D / A48D PARTS MANUAL

The purpose of this manual is for parts identification of the Magnum A series sod installer. This manual is not to be used for assembly. This manual includes parts lists and illustrations of all available replacement parts for the Magnum A series sod installer. A table of contents is placed at the beginning of the manual for location of specific parts. Keep this manual available for reference in the shop area.

At the time of publication all information contained in this manual was technically correct. However, all materials and specifications are subject to change without notice.

Comments and suggestions about this manual may be directed to: Bucyrus Equipment Co., Inc., PO Box 156-209 Main, Hillsdale, KS 66036. Phone 1-800-330-0857

© Copyright 2013 BECI. All information contained within this publication is based on the latest product information at the time of publication. Due to constant improvements in the design and quality of production components, some minor discrepancies may result between the actual vehicle and the information presented in this publication. Depictions and/or procedures in this publication are intended for reference use only. No liability can be accepted for omissions or inaccuracies. Any reprinting or reuse of the depictions and/or procedures contained within, whether whole or in part, is expressly prohibited. Printed in U.S.A.

RE-ORDER NUMBER: 2IND-MANUAL
REVISION: 2IND-100010

TABLE OF CONTENTS

Section 1	BRAKE, WHEEL, & HUB
Section 2	DECALS
Section 3	ELECTRICAL
Section 4	ENGINE
Section 5	FRONT SPENDLE
Section 6	HYDRALICS
Section 7	HYDROSTAT ROLL LIFT CONTROL
Section 8	OPERATORS PLATFORM
Section 9	ROLL LIFT
Section 10	SHIELDS
Section 11	STEERING AXLE

**MAG A42D & A48D
SHIELDS**

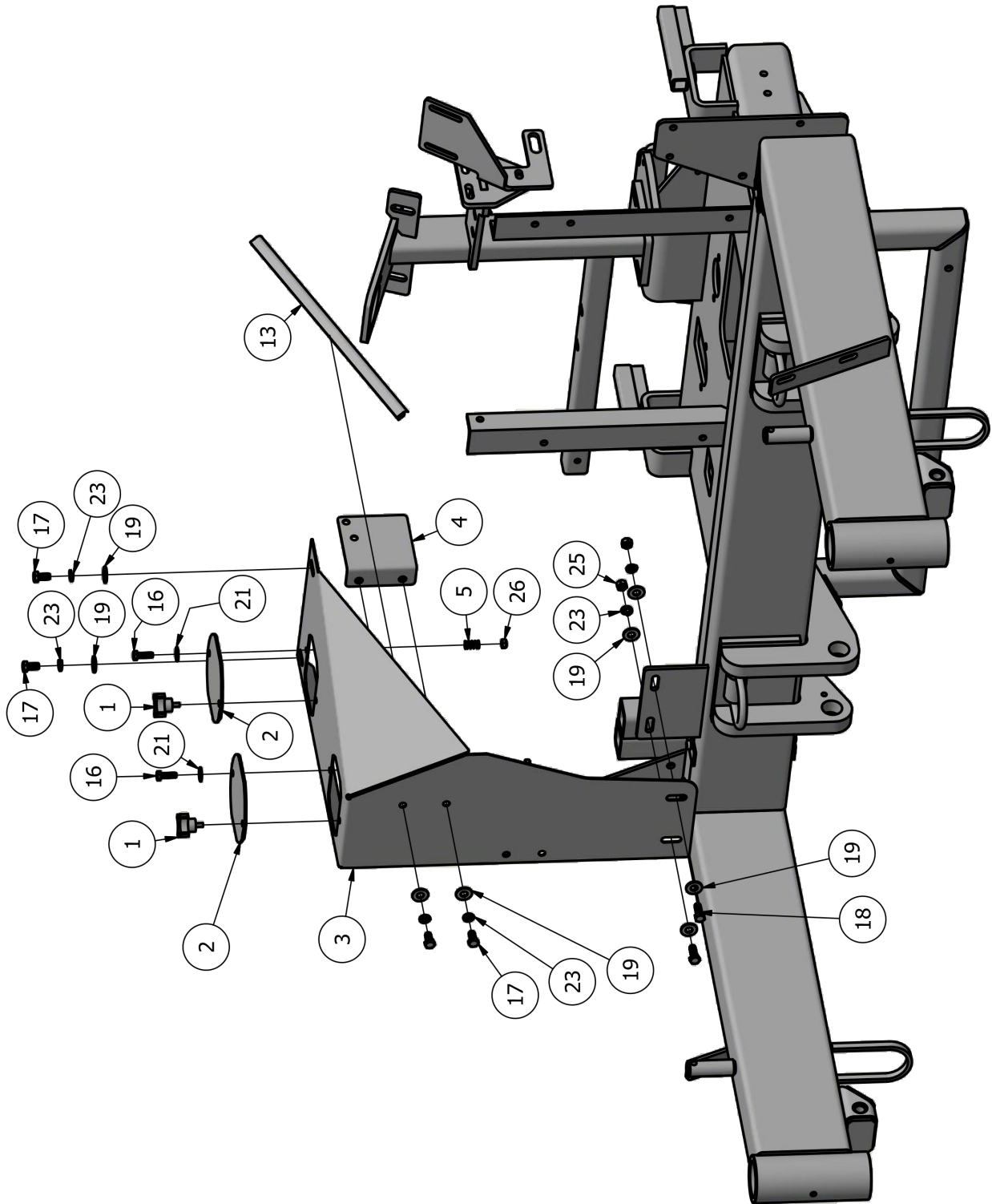
SHIELDS - Parts List			
ITEM	QTY	PART NUMBER	DESCRIPTION
1	3	5993K51	KNOB 1/4"-20, 1/2" LONG
2	3	IND-CVR202	SHIELD, CAP
3	1	2IND-SHL101	LEFT SHIELD
4	1	2IND-SHL107	RADIATOR RESERVOIR MNT
5	3	9434K97	SPRING, 0.48" OD X 0.038" WIRE, 0.88"LG
6	1	2IND-SHL108	LEFT SHIELD BRACKET
7	1	2IND-SHL110	SHIELD, SCREEN
8	1	2IND-SHL111	SHIELD CONTROL PANEL
9	1	2IND-SHL200	2WD/4WD LEVER BOOT RING
10	1	885	RUBBER BOOT
11	2	10686-02383	HOSE CLAMP BODY
12	3	10686-02384	HOSE CLAMP PLATE
13	1	12335A27	WEATHER RESISTANT RUBBER
14	22	13003	1/4"-20 X 3/4" CAPSCREW
15	2	13016	1/4"-20 X 3 1/2" CAPSCREW, PT
16	5	13055	5/16"-18 X 1" CAPSCREW
17	17	13103	3/8"-16 X 3/4" CAPSCREW
18	12	13105	3/8"-16 X 1" CAPSCREW
19	34	33007	3/8" FLAT WAHSER
20	24	33857	1/4" FLAT WASHER
21	7	33858	5/16" FLAT WASHER
22	24	33891	1/4" LOCK WASHER
23	30	33893	3/8" LOCK WASHER
24	2	36302	1/4"-20 HEX NUT
25	8	36306	3/8"-16 HEX NUT
26	3	37262	5/16"-18 LOCK NUT
27	1	68381	AIR INTAKE RAIN CAP
28	1	IN-CVR200	RUBBER BOOT RING
29	1	S24087600	DOCUMENT HOLDER
30	1	13107	3/8"-16 X 1 1/4" CAPSCREW
31	1	2IND-SHL100	SHEILD
32	1	0-168	RUBBER BOOT
33	1	2IND-SHL102	LEFT SIDE SHIELD
34	1	2IND-SHL104	CENTER SHIELD
35	1	2IND-SHL103	REAR SHIELD
36	1	2IND-SHL105	SHIELD REAR MOUNT
37	1	2IND-SHL109	REAR SHIELD BRACKET
38	2	33859	3/8" FLAT WASHER



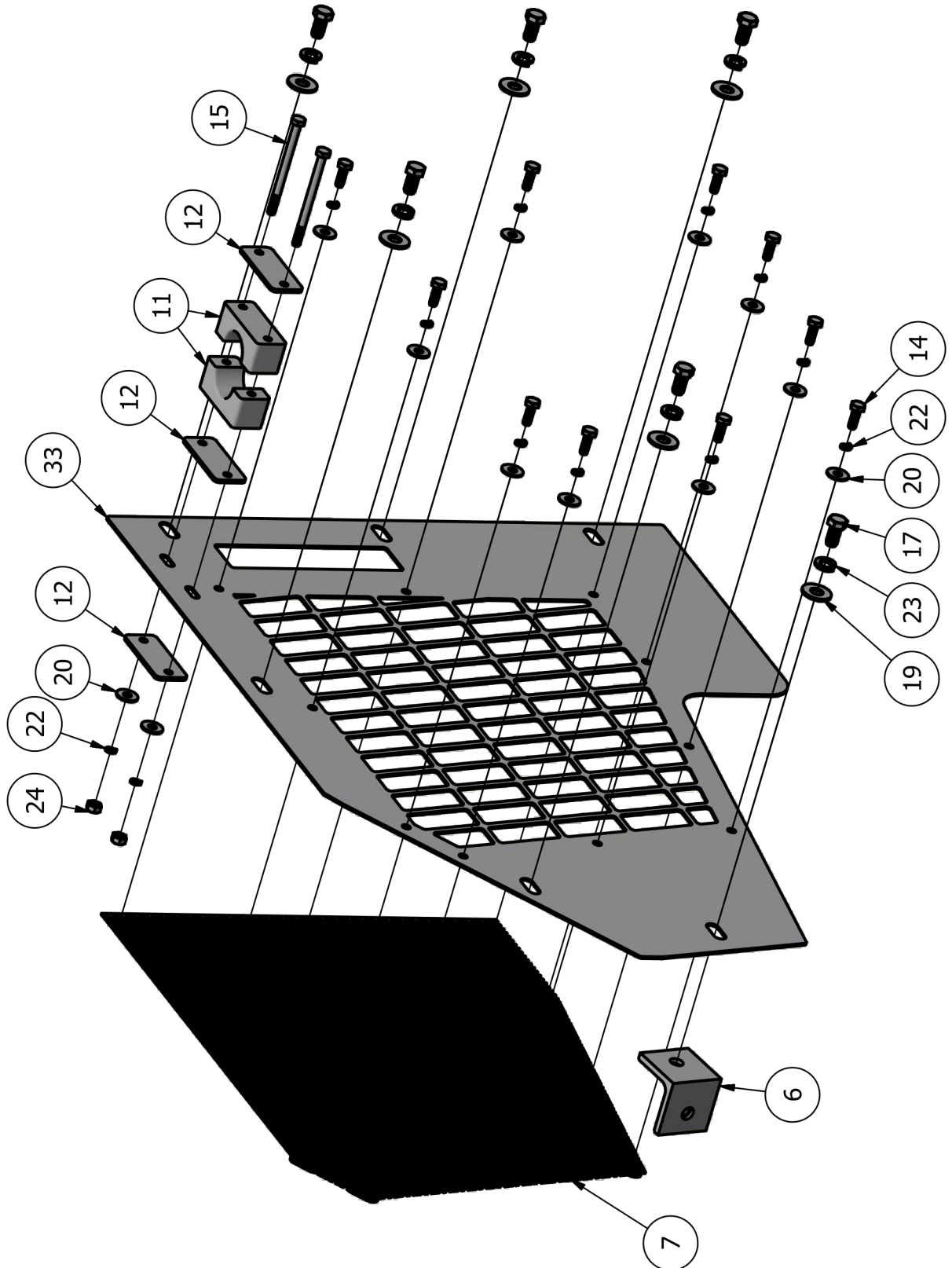
**MAG A42D & A48D
SHIELDS**

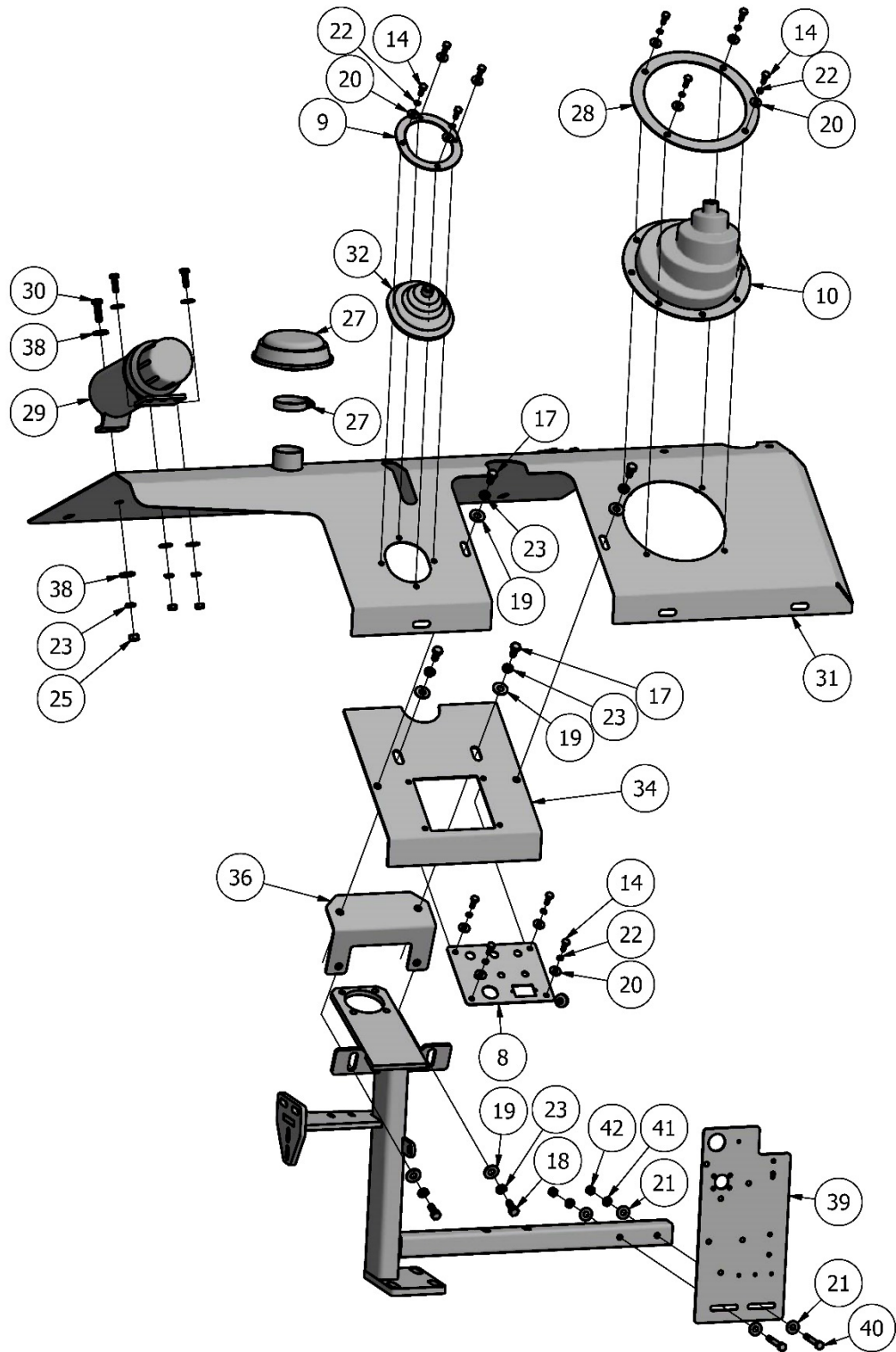
ITEM	QTY	PART NUMBER	DESCRIPTION
39	1	2IND-SHL112	ELECTRICAL PANEL
40	2	13063	5/16" – 18 X 2 ½" CAPSCREW PT
41	4	33892	5/16" LOCK WASHER
42	4	36304	5/16" – 18 HEX NUTS

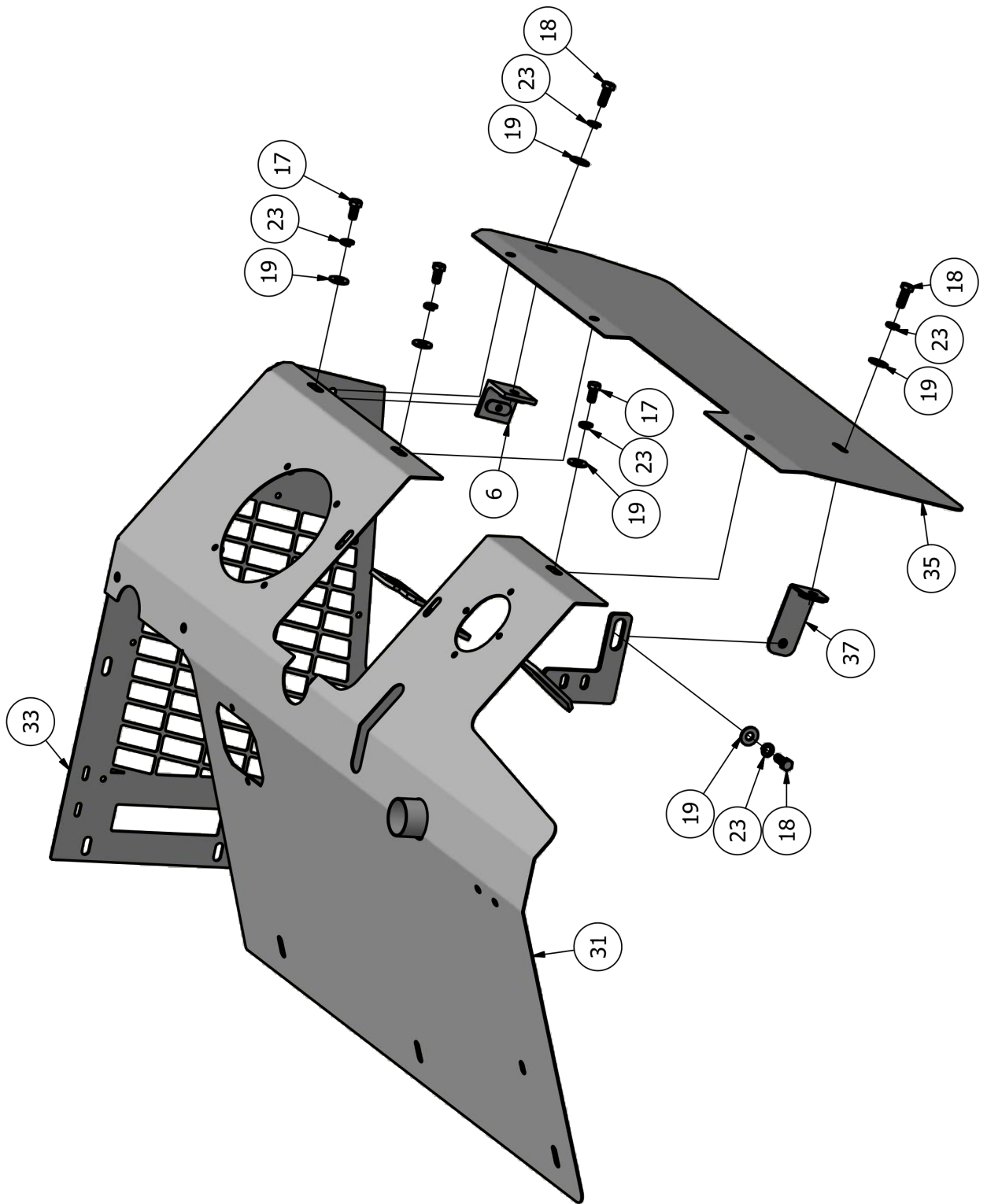




MAG A42D & A48D
SHIELDS







[illegible]