

MAGNUM BR SOD HARVESTER PARTS MANUAL



Bucyrus Equipment Co., Inc.
Box 156, 209 Central Ave.
Hillsdale, Ks 66036
1-800-330-0857
www.magnumenp.com

RE-ORDER NUMBER: BRPTSMANUAL
REVISION: BRM-100017



MAGNUM BR SOD HARVESTER PARTS MANUAL

The purpose of this manual is for parts identification of the Magnum BR sod harvester. This manual is not to be used for assembly. This manual includes parts lists and illustrations of all available replacement parts for the Magnum BR harvesters. A table of contents is placed at the beginning of the manual for location of specific parts. Keep this manual available for reference in the shop area.

At the time of publication all information contained in this manual was technically correct. However, all materials and specifications are subject to change without notice.

Comments and suggestions about this manual may be directed to: Bucyrus Equipment Co., Inc., PO Box 156-209 Main, Hillsdale, KS 66036. Phone 1-800-330-0857

©Copyright 2005 BECI. All information contained within this publication is based on the latest product information at the time of publication. Due to constant improvements in the design and quality of production components, some minor discrepancies may result between the actual vehicle and the information presented in this publication. Depictions and/or procedures in this publication are intended for reference use only. No liability can be accepted for omissions or inaccuracies. Any reprinting or reuse of the depictions and/or procedures contained within, whether whole or in part, is expressly prohibited. Printed in U.S.A.

TABLE OF CONTENTS

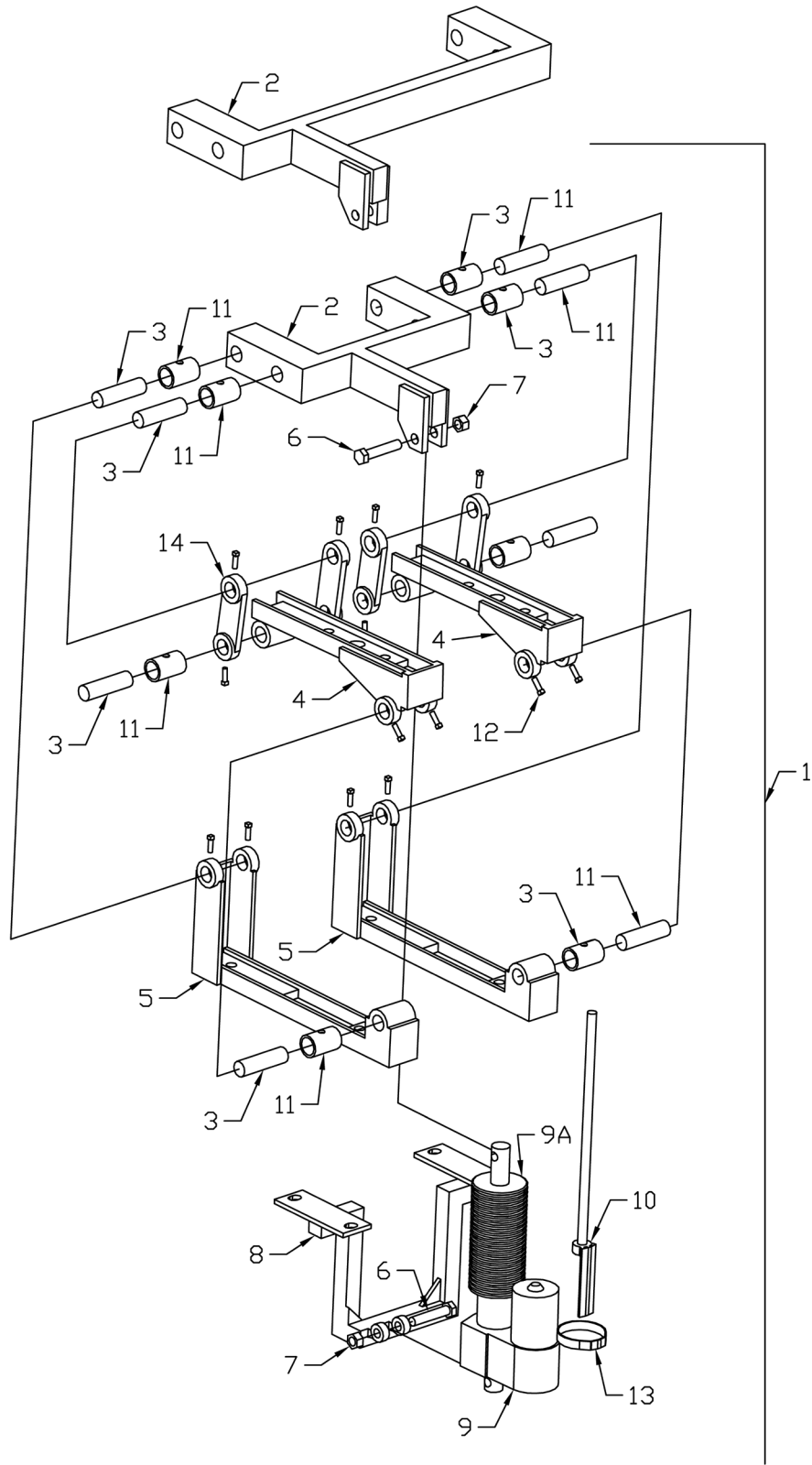
Section 1	32/42/48 Floating Heads
Section 2	42/48 Solid Heads / Coulter Option
Section 3	30 Solid Heads / Coulter Option
Section 4	Depth Control
Section 5	1st & 2ND Conveyor
Section 6	Wheel and Cooler
Section 7	Electrical Components
Section 8	Hydraulics
Section 9	Increaser Pump
Section 10	Dual Kit
Section 11	Decals

DEPTH CONTROL

Parts List			
ITEM	QTY	PART NUMBER	DESCRIPTION
1	1	STDA100	Depth Control Assembly, 42"/48" Floating Heads Only
	1	STDA100-30S	Depth Control Assembly, 30" Solid Heads Only
	1	STDA100-42S	Depth Control Assembly, 42" Solid Heads Only
	1	SDTA100-48S	Depth Control Assembly, 48" Solid Heads Only
2	1	DC0013	Actuator Mounting Arm, 42"/48" Floating Heads Only
	1	DCO 013-30S	Actuator Mounting Arm, 30" Solid Heads Only
	1	DCO 013-42S	Actuator Mounting Arm, 42" Solid Heads Only
	1	DCO 013-48S	Actuator Mounting Arm, 48" Solid Heads Only
3	8	DC0003	Pivot Pin
4	2	DC0015	Bearing Mounting Arm
5	2	DC0016	Pivot Assembly Base
6	1	13213	1/2"-13 x 2-1/2" Grade 5 Zinc Finish Hex Cap Screw
7	1	37268	1/2"-13 Zinc Finish Grade C Top Lock Nut
8	1	DC0014	Actuator Mounting Arm, Lower
9	1	DC0009	Actuator
9A	1	DCO-116	ACTUATOR BOOT
10	1	DC0010	Depth Gauge
11	8	DC0011	Replaceable Bushing
12	16	DC0112	5/16-18 Square Head Bolt, 1/2" long
13	1	DC0 113	Clamp
14	4	DC0001	Connecting Link



DEPTH CONTROL



DEPT. OF CONTROL

This image shows a full page of blank white paper with horizontal ruling lines. The lines are evenly spaced and run across the width of the page, typical of notebook or legal stationery. There are no margins, text, or other markings present.