

MAGNUM A SERIES DIESEL SOD INSTALLER PARTS MANUAL



**MAGNUM A42D
MAGNUM A48D**

Bucyrus Equipment Co., Inc.
Box 156, 209 Main
Hillsdale, Ks 66036
1-800-330-0857
www.magnumenp.com

RE-ORDER NUMBER: 2IND-MANUAL
REVISION: 2IND-100010



A SERIES

MAGNUM A42D / A48D PARTS MANUAL

The purpose of this manual is for parts identification of the Magnum A series sod installer. This manual is not to be used for assembly. This manual includes parts lists and illustrations of all available replacement parts for the Magnum A series sod installer. A table of contents is placed at the beginning of the manual for location of specific parts. Keep this manual available for reference in the shop area.

At the time of publication all information contained in this manual was technically correct. However, all materials and specifications are subject to change without notice.

Comments and suggestions about this manual may be directed to: Bucyrus Equipment Co., Inc., PO Box 156-209 Main, Hillsdale, KS 66036. Phone 1-800-330-0857

© Copyright 2013 BECI. All information contained within this publication is based on the latest product information at the time of publication. Due to constant improvements in the design and quality of production components, some minor discrepancies may result between the actual vehicle and the information presented in this publication. Depictions and/or procedures in this publication are intended for reference use only. No liability can be accepted for omissions or inaccuracies. Any reprinting or reuse of the depictions and/or procedures contained within, whether whole or in part, is expressly prohibited. Printed in U.S.A.

RE-ORDER NUMBER: 2IND-MANUAL
REVISION: 2IND-100010

TABLE OF CONTENTS

Section 1	BRAKE, WHEEL, & HUB
Section 2	DECALS
Section 3	ELECTRICAL
Section 4	ENGINE
Section 5	FRONT SPENDLE
Section 6	HYDRALICS
Section 7	HYDROSTAT ROLL LIFT CONTROL
Section 8	OPERATORS PLATFORM
Section 9	ROLL LIFT
Section 10	SHIELDS
Section 11	STEERING AXLE

MAG A42D & A48D
DRIVE MOTOR, FRONT/REAR SPINDLE, BRAKE, WHEEL, & HUB

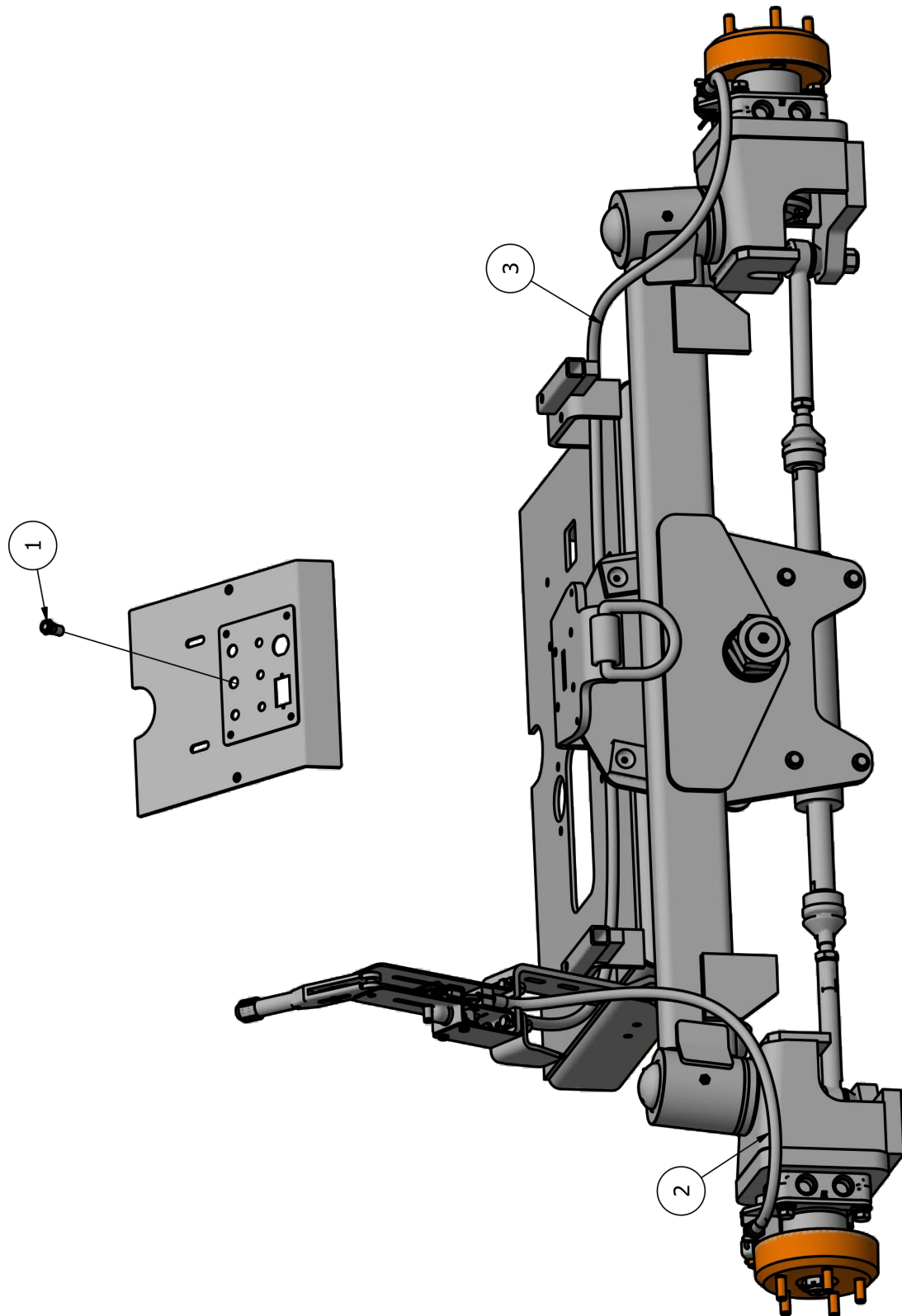
DRIVE MOTOR, FRONT/REAR SPINDLE, BRAKE, WHEEL, & HUB – PARTS LIST			
ITEM	QTY	PART NUMBER	DESCRIPTION
1	1	Q14F3	RED INDICATOR LIGHT
2	1	IN-CBL301	BRAKE CABLE - SHORT (LEFT)
3	1	IND-CBL301	BRAKE CABLE - LONG (RIGHT)
4	1	165-508-023	BRAKE LEVER
5	1	B826	BRAKE INDICATOR SWITCH
5-1	2	36402	1/4"-20 LOCK NUT
5-2	2	13003	1/4"-20 X 3/4" CAPSCREW
6	1	IN-BR101	BRAKE LEVER MOUNT
7	1	IN-BR102	BRAKE INDICATOR SWITCH MOUNT
8	3	HYDMNT002-SM	1/2" HOSE CLAMP SMOOTH BORE
9	1	2IND-VB109	REAR WHEEL MOTOR HOSE MNT, LHS
10	1	"SEE STEERING AXLE SECTION"	REAR SPINDLE
11	2	151H3097	DRIVE MOTOR, CCW, LHS
12	1	IN-RSP115L	BRAKE CABLE MOUNT, LEFT
13	2	800149-020	PARKING BRAKE SHOE ASSEMBLY
14	2	850226-010-BECI	BRAKE DRUM/HUB
15	2	9546K55	BUMPER, POLYURETHANE
16	20	30422	1/2"-20 LUG NUT
17	2	33444	1"-18 GA. WASHER
18	6	65078	1/8" X 1-1/2" COTTER PIN
19	1	"SEE STEERING AXLE SECTION"	REAR SPINDLE
20	1	IN-RSP115R	BRAKE CABLE MOUNT, RIGHT
21	2	151H3087	DRIVE MOTOR, CW, RHS
22	4	98481A175	WOODRUFF KEY
23	4	151-4154	CASTLE NUT, 1"-20
24	1	2IND-FSP100R	FRONT SPINDLE, RHS
25	2	72102	WHEEL HUB
26	2	33445	1"-14 GA. WASHER
27	1	2IND-FSP100L	FRONT SPINDLE, LHS
28	2	15311	5/8"-11 X 2" CAPSCREW, GR8
29	2	36314	5/8"-11 HEX NUT
30	4	33897	5/8" LOCK WASHER
31	4	13217	1/2"-13 X 3" CAPSCREW PT
32	4	13214	1/2"-13 X 2 3/4" CAPSCREW PT
33	8	13212	1/2"-13 X 2 1/4" CAPSCREW PT
34	8	33861	1/2" FLAT WASHER
35	8	33817	1/2" SAE WASHER
36	16	33895	1/2" LOCK WASHER



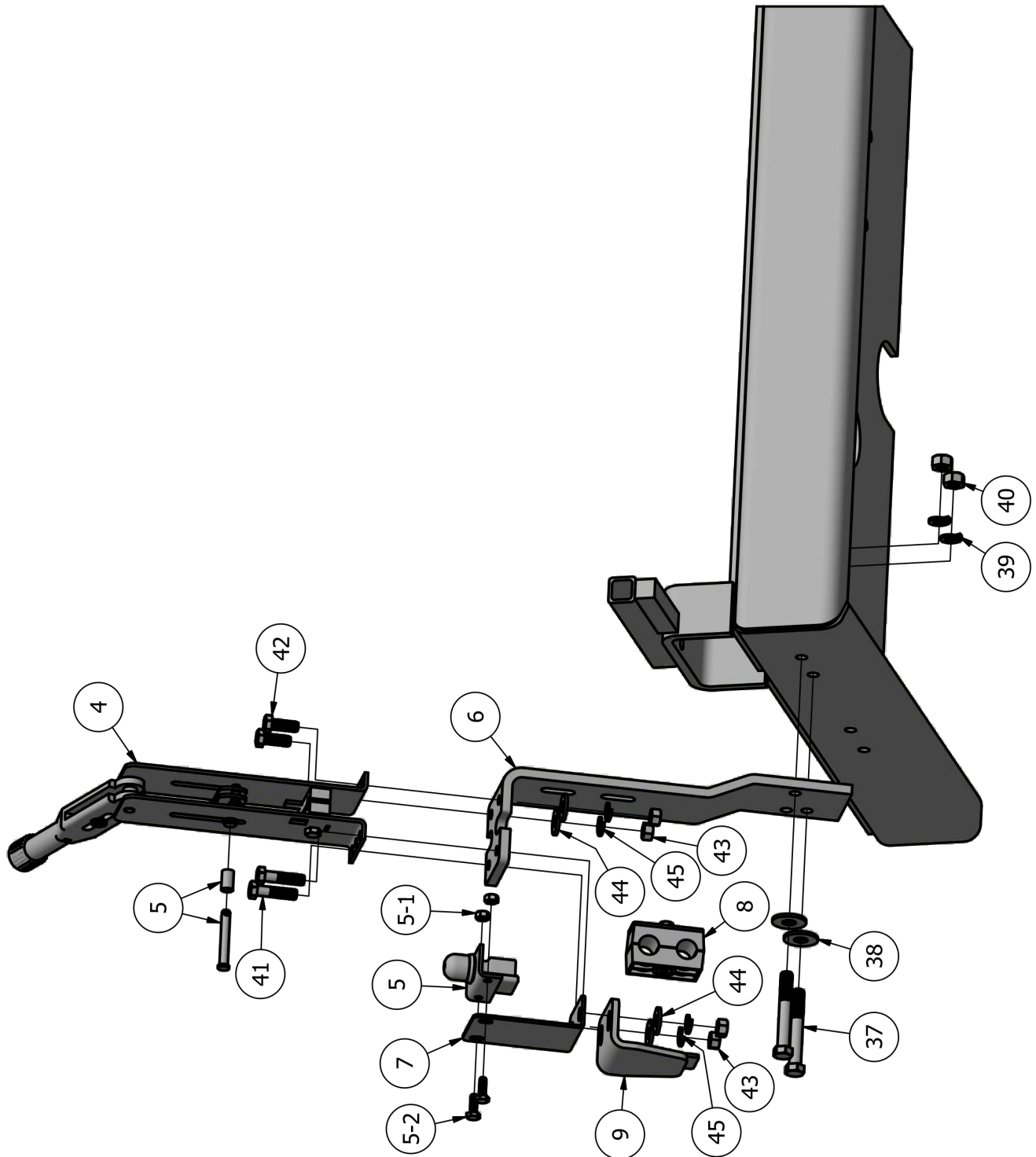
MAG A42D & A48D
DRIVE MOTOR, FRONT/REAR SPINDLE, BRAKE, WHEEL, & HUB

ITEM	QTY	PART NUMBER	DESCRIPTION
37	2	0115165	7/16"-14 X 3" CAPSCREW PT
38	2	33860	7/16" FLAT WASHER
39	2	33894	7/16" LOCK WASHER
40	2	36308	7/16"-14 HEX NUT
41	2	13109	3/8"-16 X 1 1/2" CAPSCREW PT
42	2	13105	3/8"-16 X 1" CAPSCREW
43	4	36306	3/8"-16 HEX NUT
44	4	33859	3/8" FLAT WASHER
45	4	33893	3/8" LOCK WASHER
46	8	13055	5/16"-18 X 1" CAPSCREW
47	8	33892	5/16" LOCK WASHER
48	4	IN-WHR100 IN-WHR102 (OPTIONAL)	15 X 10 WHEEL, 5 ON 4.5, 2.5 BC 29X14.00-15 WHEEL
49	4	135845-70 29-14.00X15 (OPTIONAL)	29-1250X15 TURF TIRE 29-14.00X15 TIRE, ULTRA TRAC
50	4	90-415-9	VALVE STEM
51	2	33004	1/4" FLAT WASHER
52	2	0156739	5/16" X 1" CLEVIS PIN

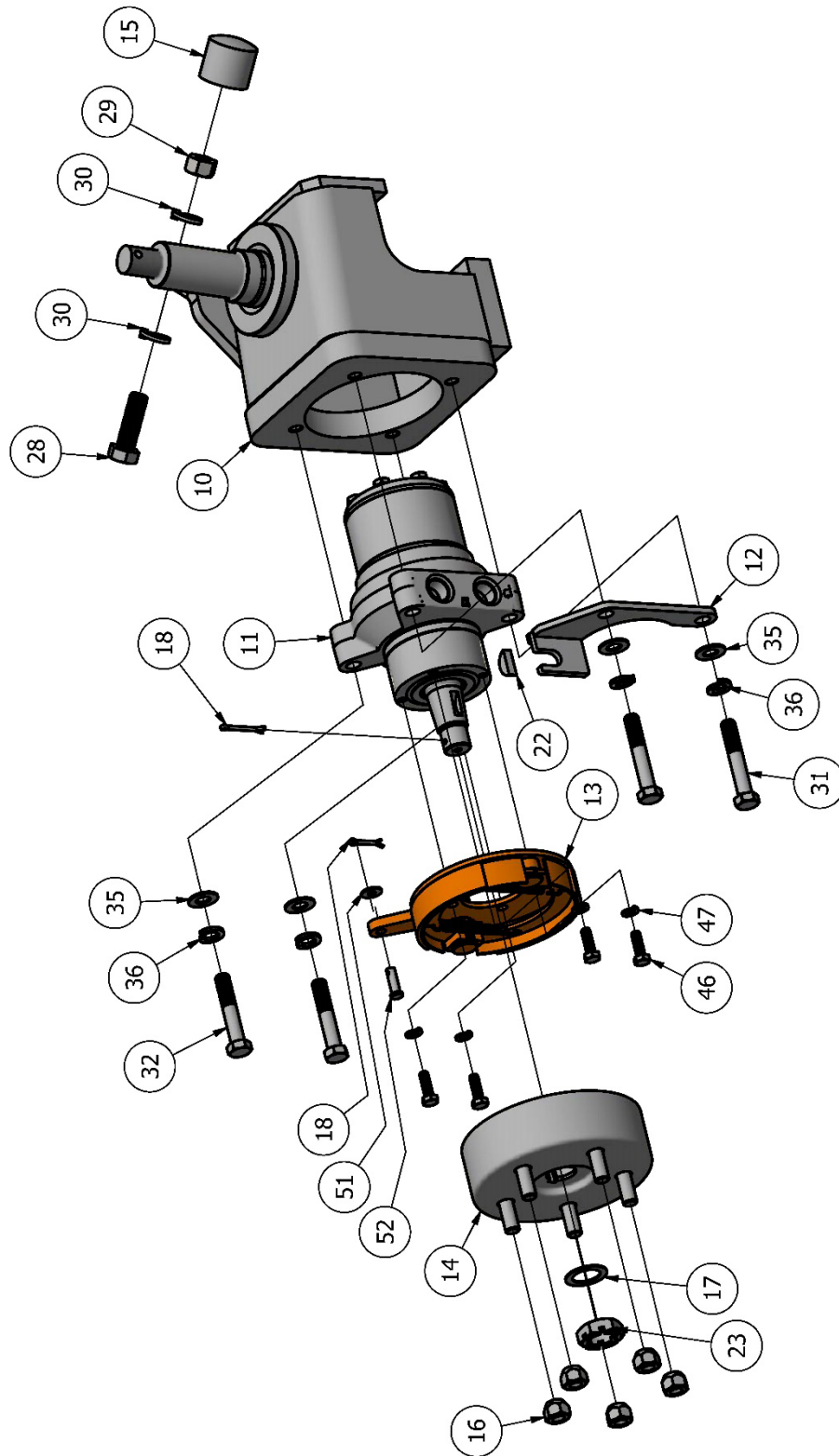




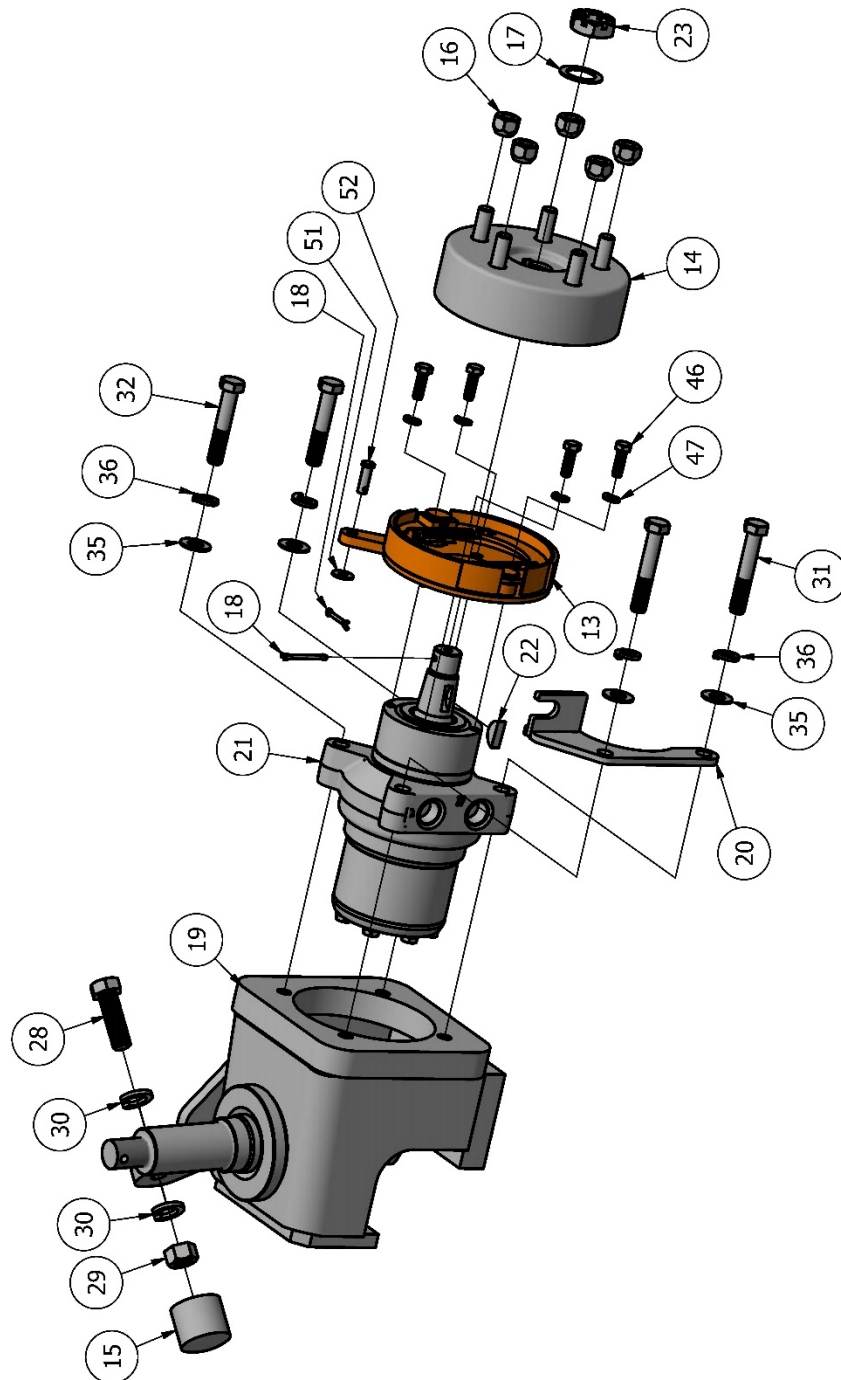
MAG A42D & A48D
DRIVE MOTOR, FRONT/REAR SPINDLE, BRAKE, WHEEL, & HUB



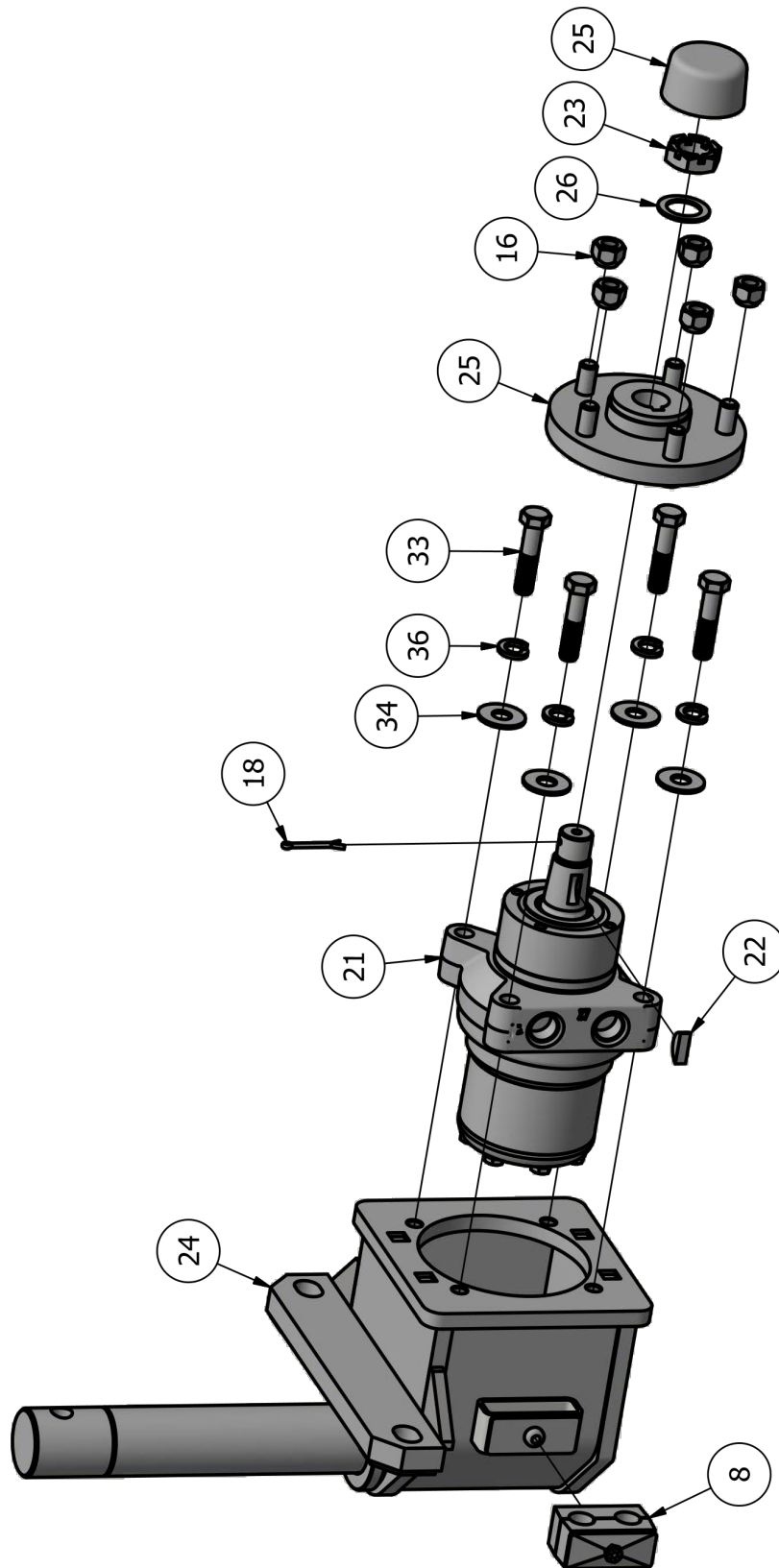
MAG A42D & A48D
DRIVE MOTOR, FRONT/REAR SPINDLE, BRAKE, WHEEL, & HUB



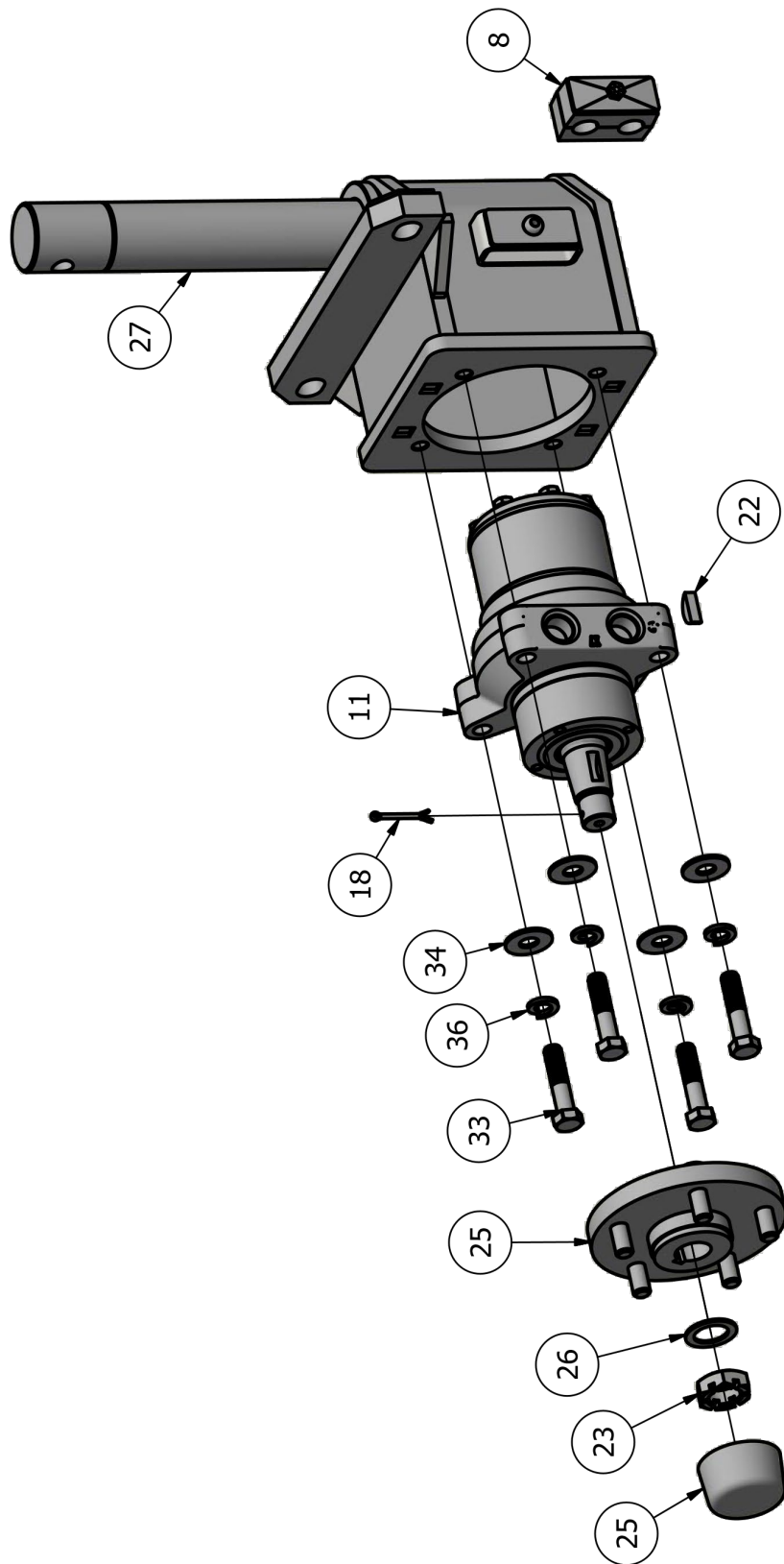
MAG A42D & A48D
DRIVE MOTOR, FRONT/REAR SPINDLE, BRAKE, WHEEL, & HUB

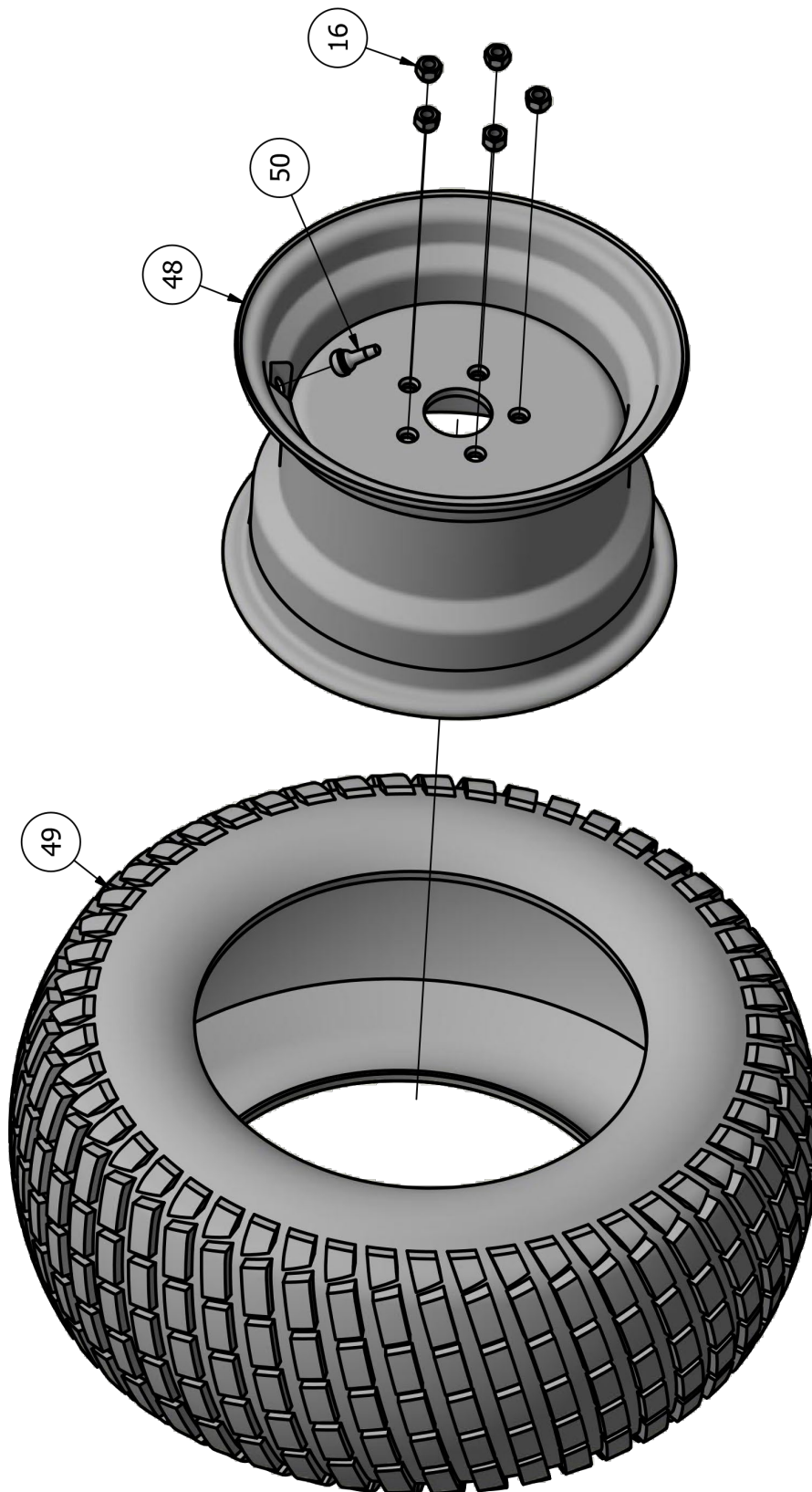


MAG A42D & A48D
DRIVE MOTOR, FRONT/REAR SPINDLE, BRAKE, WHEEL, & HUB



MAG A42D & A48D
DRIVE MOTOR, FRONT/REAR SPINDLE, BRAKE, WHEEL, & HUB





[illegible]