

MAGNUM SRA SERIES

PARTS MANUAL



MAGNUM 300SRA
MAGNUM 420SRA
MAGNUM 480SRA

Bucyrus Equipment Co., Inc.
PO Box 156, 209 Central
Hillsdale, Ks 66036
1-800-330-0857
www.magnumenp.com

RE-ORDER NUMBER: SRAMANUAL
REVISION: SRA-100025



SRA SERIES

MAGNUM 300SRA/420SRA/480SRA PARTS MANUAL

The purpose of this manual is for parts identification of the Magnum SR series harvester. This manual is not to be used for assembly. This manual includes parts lists and illustrations of all available replacement parts for the Magnum SR series harvesters. A table of contents is placed at the beginning of the manual for location of specific parts. Keep this manual available for reference in the shop area.

At the time of publication all information contained in this manual was technically correct. However, all materials and specifications are subject to change without notice.

Comments and suggestions about this manual may be directed to: Bucyrus Equipment Co., Inc., PO Box 156-209 Main, Hillsdale, KS 66036. Phone 1-800-330-0857

©Copyright 2005 BECI. All information contained within this publication is based on the latest product information at the time of publication. Due to constant improvements in the design and quality of production components, some minor discrepancies may result between the actual vehicle and the information presented in this publication. Depictions and/or procedures in this publication are intended for reference use only. No liability can be accepted for omissions or inaccuracies. Any reprinting or reuse of the depictions and/or procedures contained within, whether whole or in part, is expressly prohibited. Printed in U.S.A.

TABLE OF CONTENTS

Section 1	420/480 Floating Heads
Section 2	420/480 Solid Heads / Coulter Option
Section 3	300 Solid Heads / Coulter Option
Section 4	Depth Control
Section 5	1 st Conveyor
Section 6	2 nd Conveyor
Section 7	Chop Offs
Section 8	Net Dispenser
Section 9	Tube Racks
Section 10	Control Panel Box
Section 11	Wheel/Hub & Pulse Pickup Assembly
Section 12	Auto Steer
Section 13	Hydraulic Components
Section 14	Flow Control Valve
Section 15	Chop Valve

Section 16 Accumulator

Section 17 Hydraulic Tank & Increaser

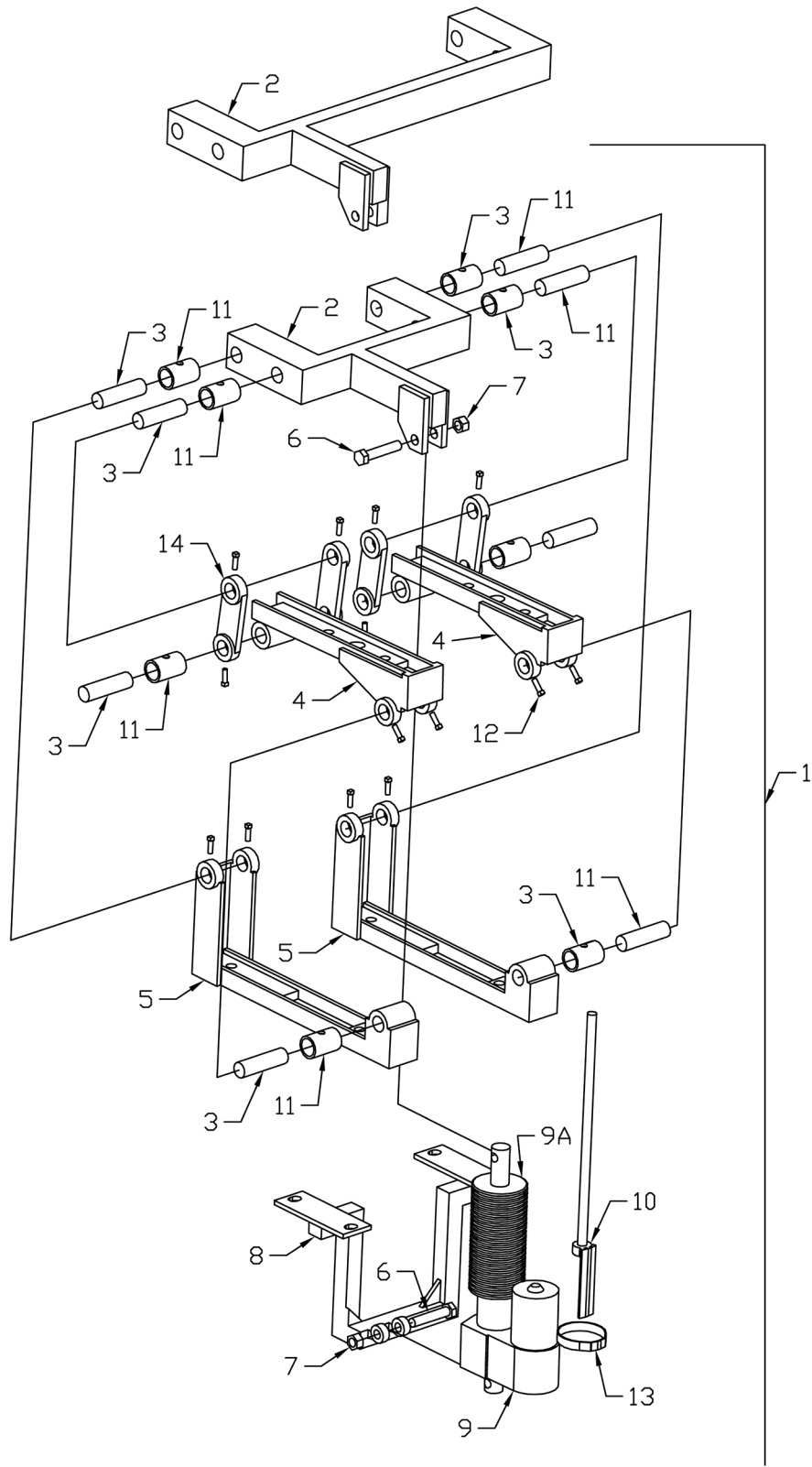
Section 18 Hose/Hardline Mounts

Section 19 Electrical Components

DEPTH CONTROL

Parts List			
ITEM	QTY	PART NUMBER	DESCRIPTION
1	1	STDA100	Depth Control Assembly, 42"/48" Floating Heads Only
	1	STDA100-30S	Depth Control Assembly, 30" Solid Heads Only
	1	STDA100-42S	Depth Control Assembly, 42" Solid Heads Only
	1	SDTA100-48S	Depth Control Assembly, 48" Solid Heads Only
2	1	DC0013	Actuator Mounting Arm, 42"/48" Floating Heads Only
	1	DCO 013-30S	Actuator Mounting Arm, 30" Solid Heads Only
	1	DCO 013-42S	Actuator Mounting Arm, 42" Solid Heads Only
	1	DCO 013-48S	Actuator Mounting Arm, 48" Solid Heads Only
3	8	DC0003	Pivot Pin
4	2	DC0015	Bearing Mounting Arm
5	2	DC0016	Pivot Assembly Base
6	1	13213	1/2"-13 x 2-1/2" Grade 5 Zinc Finish Hex Cap Screw
7	1	37268	1/2"-13 Zinc Finish Grade C Top Lock Nut
8	1	DC0014	Actuator Mounting Arm, Lower
9	1	DC0009	Actuator
9A	1	DCO-116	Actuator Boot
10	1	DC0010	Depth Gauge
11	8	DC0011	Replaceable Bushing
12	16	DC0112	5/16-18 Square Head Bolt, 1/2" long
13	1	DC0 113	Clamp
14	4	DC0001	Connecting Link

DEPTH CONTROL



DEPT. OF CONTROL

This image shows a single sheet of white paper with horizontal ruling lines. The lines are evenly spaced and run across the width of the page. There are no margins, text, or other markings on the paper.