

# MAGNUM A SERIES DIESEL SOD INSTALLER PARTS MANUAL



**MAGNUM A42D  
MAGNUM A48D**

Bucyrus Equipment Co., Inc.  
Box 156, 209 Main  
Hillsdale, Ks 66036  
1-800-330-0857  
[www.magnumenp.com](http://www.magnumenp.com)

RE-ORDER NUMBER: 2IND-MANUAL  
REVISION: 2IND-100010





## **A SERIES**

# **MAGNUM A42D / A48D PARTS MANUAL**

The purpose of this manual is for parts identification of the Magnum A series sod installer. This manual is not to be used for assembly. This manual includes parts lists and illustrations of all available replacement parts for the Magnum A series sod installer. A table of contents is placed at the beginning of the manual for location of specific parts. Keep this manual available for reference in the shop area.

At the time of publication all information contained in this manual was technically correct. However, all materials and specifications are subject to change without notice.

Comments and suggestions about this manual may be directed to: Bucyrus Equipment Co., Inc., PO Box 156-209 Main, Hillsdale, KS 66036. Phone 1-800-330-0857

© Copyright 2013 BECI. All information contained within this publication is based on the latest product information at the time of publication. Due to constant improvements in the design and quality of production components, some minor discrepancies may result between the actual vehicle and the information presented in this publication. Depictions and/or procedures in this publication are intended for reference use only. No liability can be accepted for omissions or inaccuracies. Any reprinting or reuse of the depictions and/or procedures contained within, whether whole or in part, is expressly prohibited. Printed in U.S.A.

RE-ORDER NUMBER: 2IND-MANUAL  
REVISION: 2IND-100010

## TABLE OF CONTENTS

Section 1 .....	BRAKE, WHEEL, & HUB
Section 2 .....	DECALS
Section 3 .....	ELECTRICAL
Section 4 .....	ENGINE
Section 5 .....	FRONT SPENDLE
Section 6 .....	HYDRALICS
Section 7 .....	HYDROSTAT ROLL LIFT CONTROL
Section 8 .....	OPERATORS PLATFORM
Section 9 .....	ROLL LIFT
Section 10 .....	SHIELDS
Section 11 .....	STEERING AXLE

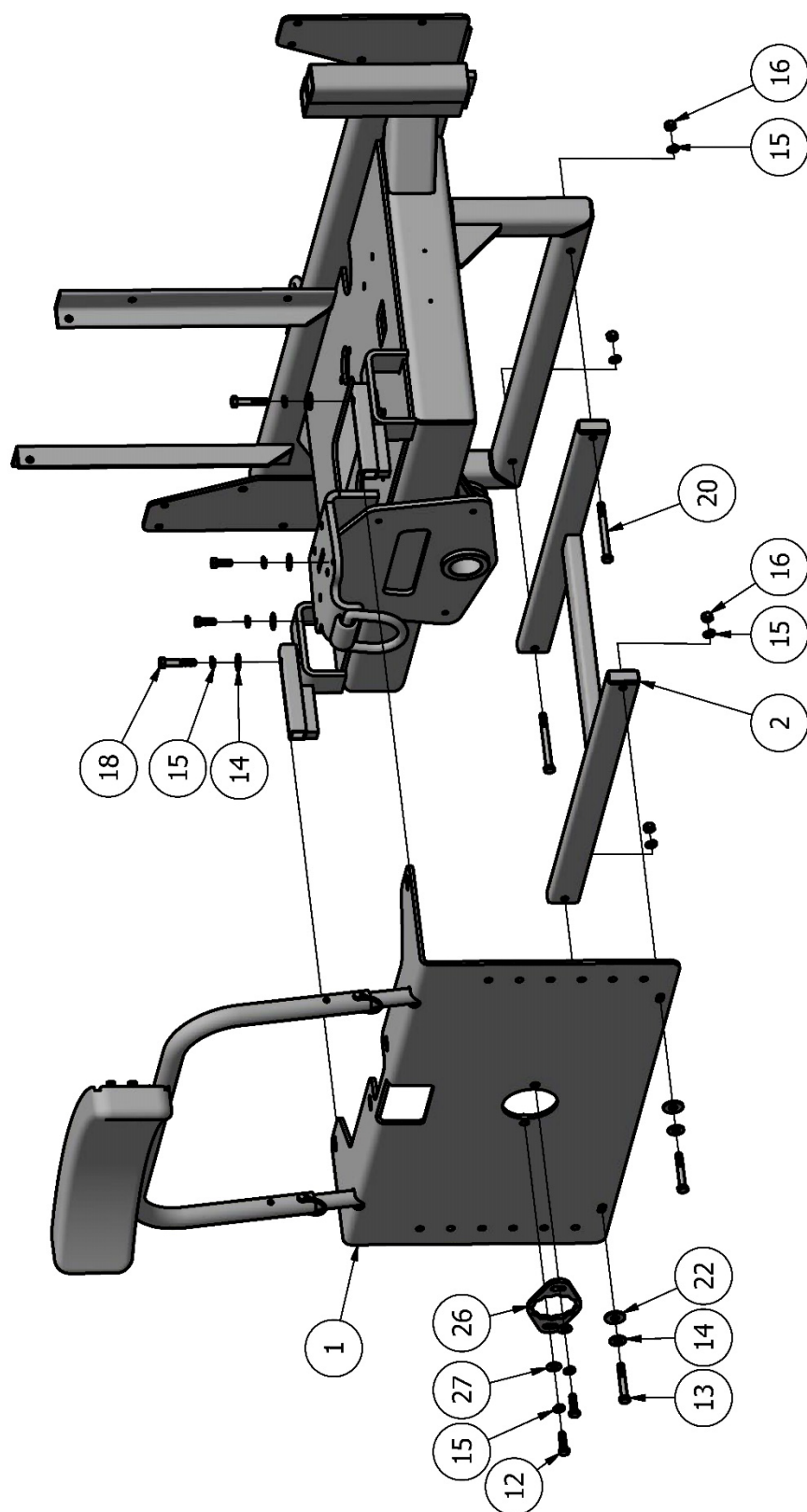
**MAG A42D & A48D  
OPERATORS PLATFORM**

<b>OPERATORS PLATFORM - Parts List</b>			
<b>ITEM</b>	<b>QTY</b>	<b>PART NUMBER</b>	<b>DESCRIPTION</b>
1	1	2IND-OP100	REAR AXLE SHIELD
2	1	2IND-OP101	REAR AXLE SHIELD BRACE
3	1	174036	INSTALLER REST
4	1	2IND-OP102	OPERATOR REST BAR
5	2	P7950	1/4" SNAP PIN
6	1	IND-OP200	OPERATOR'S PLATFORM PLATE
7	6	P1135	ISOLATOR
8	1	IN-OP100	OPERATOR'S PLATFORM
9	40	13003	1/4"-20 X 3/4" CAPSCREW
10	64	33857	1/4" FLAT WASHER
11	58	33891	1/4" LOCK WASHER
12	29	13107	3/8"-16 X 1 1/4" CAPSCREW
13	6	13113	3/8"-16 X 2 1/2" CAPSCREW PT
14	85	33007	3/8 FLAT WAHSER
15	103	33893	3/8" LOCK WASHER
16	60	36306	3/8"-16 HEX NUT
17	6	37264	3/8"-16 LOCKNUT
18	2	95111	3/8 BOLT
19	4	11103742	3/8" FENDER WASHER, 2" OD
20	2	13119	3/8"-16 X 4" CAPSCREW PT
21	17	0115109	3/8"-16 X 1 1/2" CAPSCREW
22	12	33860	7/16" FLAT WASHER
23	2	13211	1/2"-13 X 2" CAPSCREW
24	2	37268	1/2"-13 LOCKNUT
25	1	IN-OP400	OPERATOR'S PLATFORM LIFT CHAIN
26	1	2IND-RA202	REAR AXLE PIN NUT LOCKING TAB
27	2	33858	5/16" FLAT WASHER



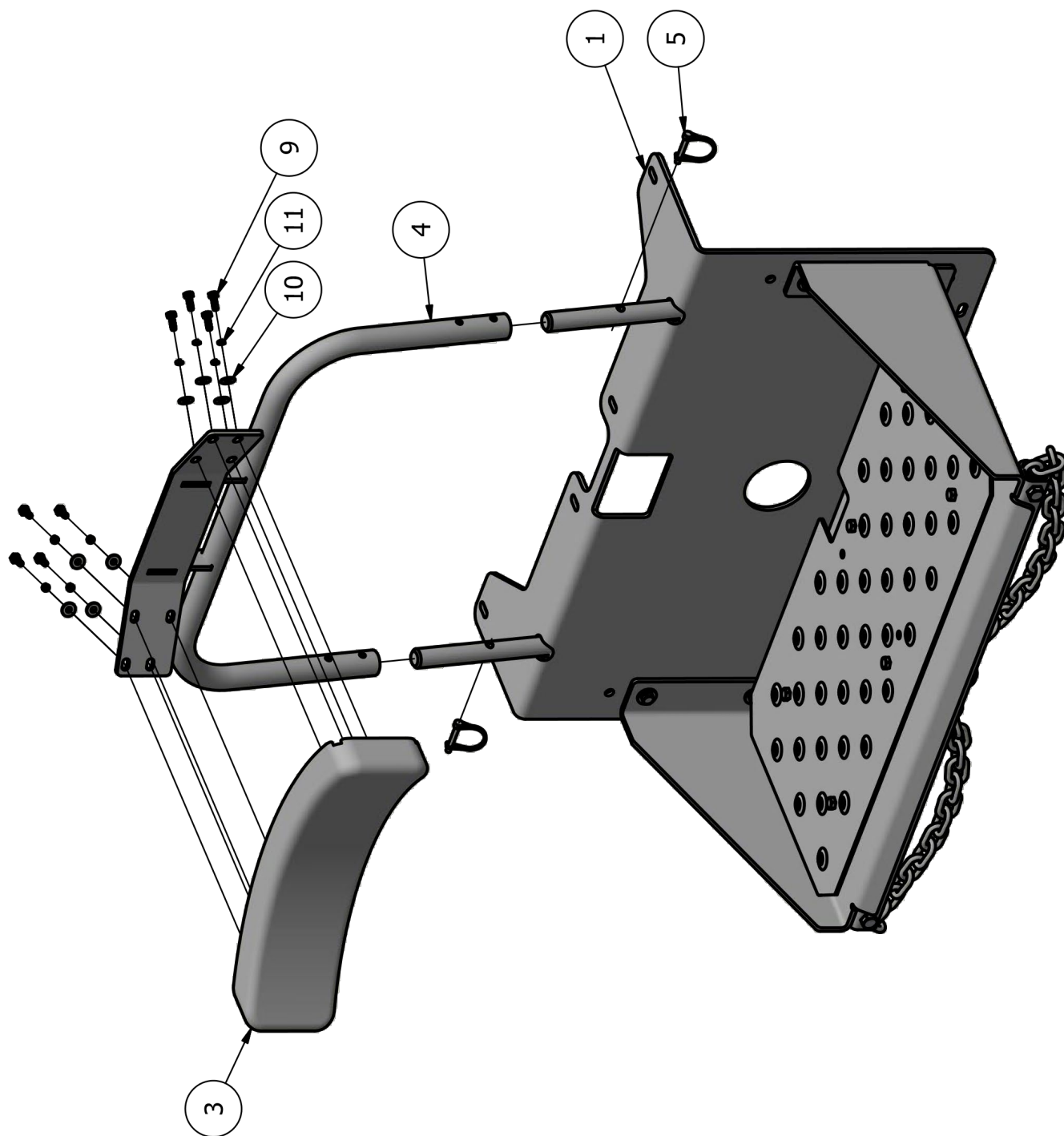
---

MAG A42D & A48D  
OPERATORS PLATFORM

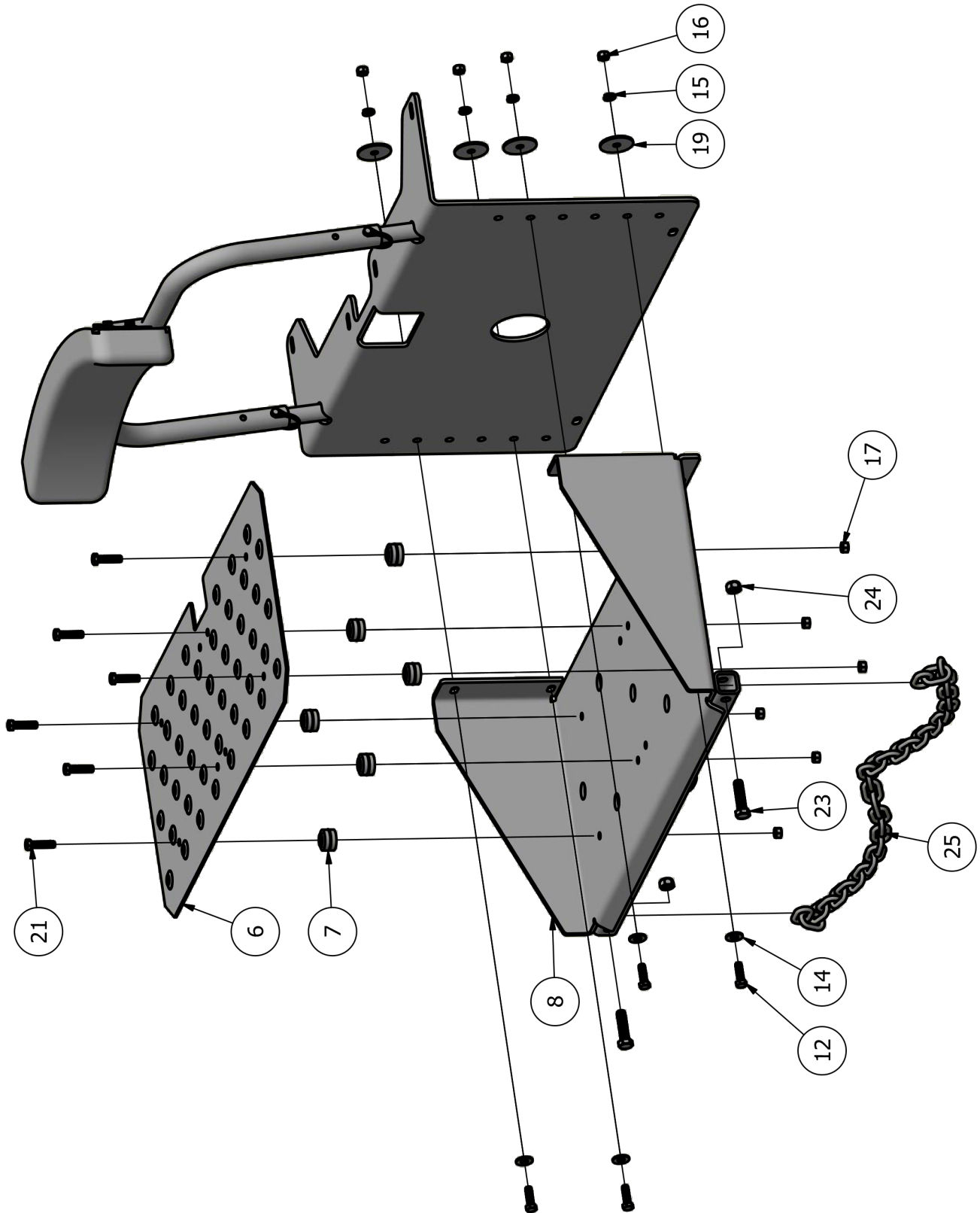


---

MAG A42D & A48D  
OPERATORS PLATFORM



MAG A42D & A48D  
OPERATORS PLATFORM



**MAG A42D & A48D**  
**OPERATORS PLATFORM**

[illegible]