

# MAGNUM SRA SERIES

## PARTS MANUAL



**MAGNUM 300SRA**  
**MAGNUM 420SRA**  
**MAGNUM 480SRA**

Bucyrus Equipment Co., Inc.  
PO Box 156, 209 Central  
Hillsdale, Ks 66036  
1-800-330-0857  
[www.magnumenp.com](http://www.magnumenp.com)

RE-ORDER NUMBER: SRAMANUAL  
REVISION: SRA-100025





## **SRA SERIES**

# **MAGNUM 300SRA/420SRA/480SRA PARTS MANUAL**

The purpose of this manual is for parts identification of the Magnum SR series harvester. This manual is not to be used for assembly. This manual includes parts lists and illustrations of all available replacement parts for the Magnum SR series harvesters. A table of contents is placed at the beginning of the manual for location of specific parts. Keep this manual available for reference in the shop area.

At the time of publication all information contained in this manual was technically correct. However, all materials and specifications are subject to change without notice.

Comments and suggestions about this manual may be directed to: Bucyrus Equipment Co., Inc., PO Box 156-209 Main, Hillsdale, KS 66036. Phone 1-800-330-0857

©Copyright 2005 BECI. All information contained within this publication is based on the latest product information at the time of publication. Due to constant improvements in the design and quality of production components, some minor discrepancies may result between the actual vehicle and the information presented in this publication. Depictions and/or procedures in this publication are intended for reference use only. No liability can be accepted for omissions or inaccuracies. Any reprinting or reuse of the depictions and/or procedures contained within, whether whole or in part, is expressly prohibited. Printed in U.S.A.

## TABLE OF CONTENTS

Section 1 .....	420/480 Floating Heads
Section 2 .....	420/480 Solid Heads / Coulter Option
Section 3 .....	300 Solid Heads / Coulter Option
Section 4 .....	Depth Control
Section 5 .....	1 <sup>st</sup> Conveyor
Section 6 .....	2 <sup>nd</sup> Conveyor
Section 7 .....	Chop Offs
Section 8 .....	Net Dispenser
Section 9 .....	Tube Racks
Section 10 .....	Control Panel Box
Section 11 .....	Wheel/Hub & Pulse Pickup Assembly
Section 12 .....	Auto Steer
Section 13 .....	Hydraulic Components
Section 14 .....	Flow Control Valve
Section 15 .....	Chop Valve

**Section 16 ..... Accumulator**

**Section 17 ..... Hydraulic Tank & Increaser**

**Section 18 ..... Hose/Hardline Mounts**

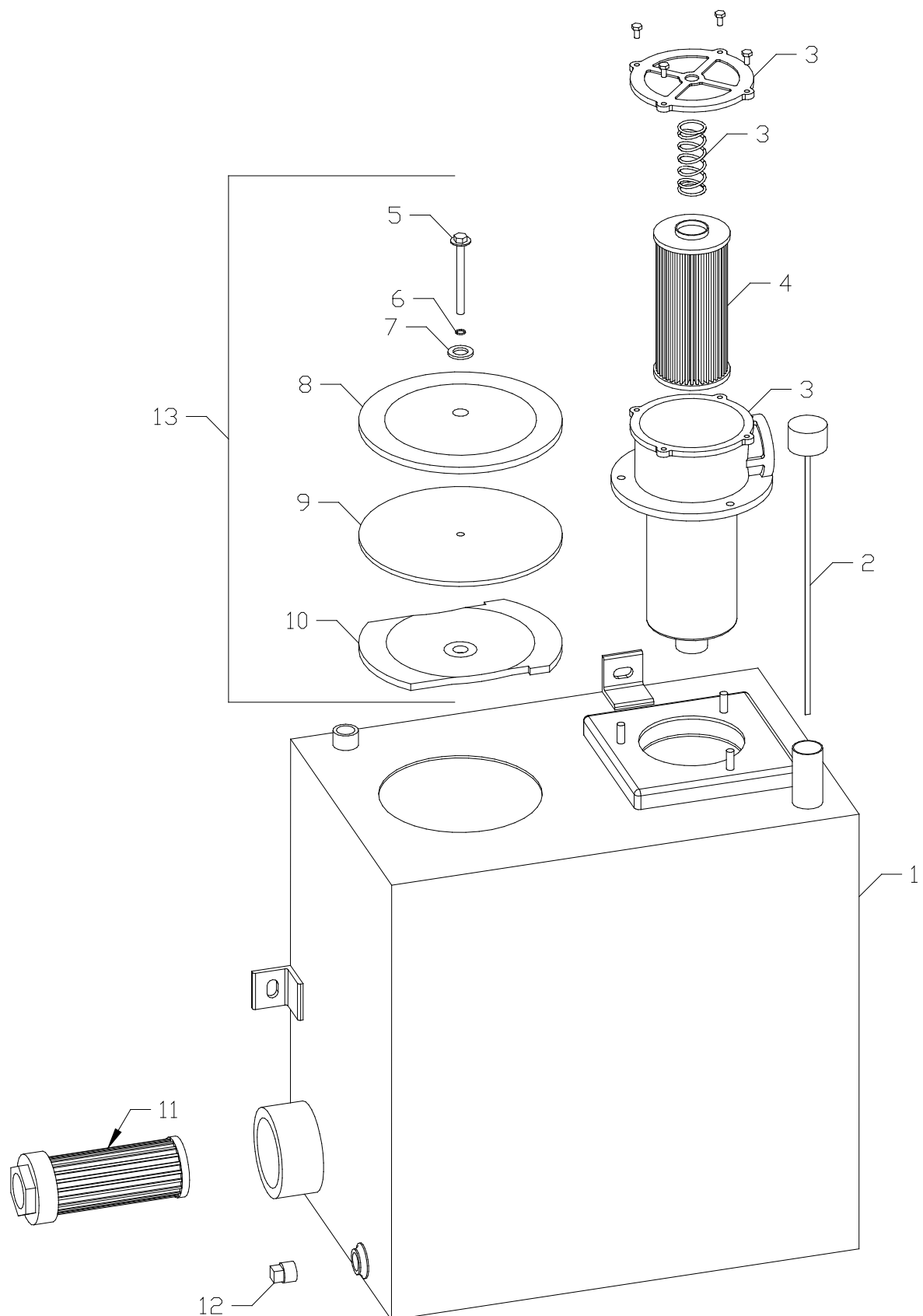
**Section 19 ..... Electrical Components**

---

## HYDRAULIC TANK / INCREASER

---

Hydraulic Tank - Parts List			
ITEM	QTY	PART NUMBER	DESCRIPTION
1	1	RV-1378	Reservoir assy
2	1	DS100	Dipstick
3	1	K051204	Filter housing assy
4	1	P171537	Filter
5	1	13-2.0 X 100 mm	Flange-head bolt
6	1	13 mm	O-ring
7	1	13 mm	Flat washer
8	1	RV-1378-1	Cover
9	1	RV1378-2	Gasket
10	1	RV-1378-3	Clamp plate
11	1	TF-1530-3	Suction strainer
12	1	5406-SHP-12-MAG	Magnetic plug
13	1	FCC-10	Cover assy. (includes items 5-10)



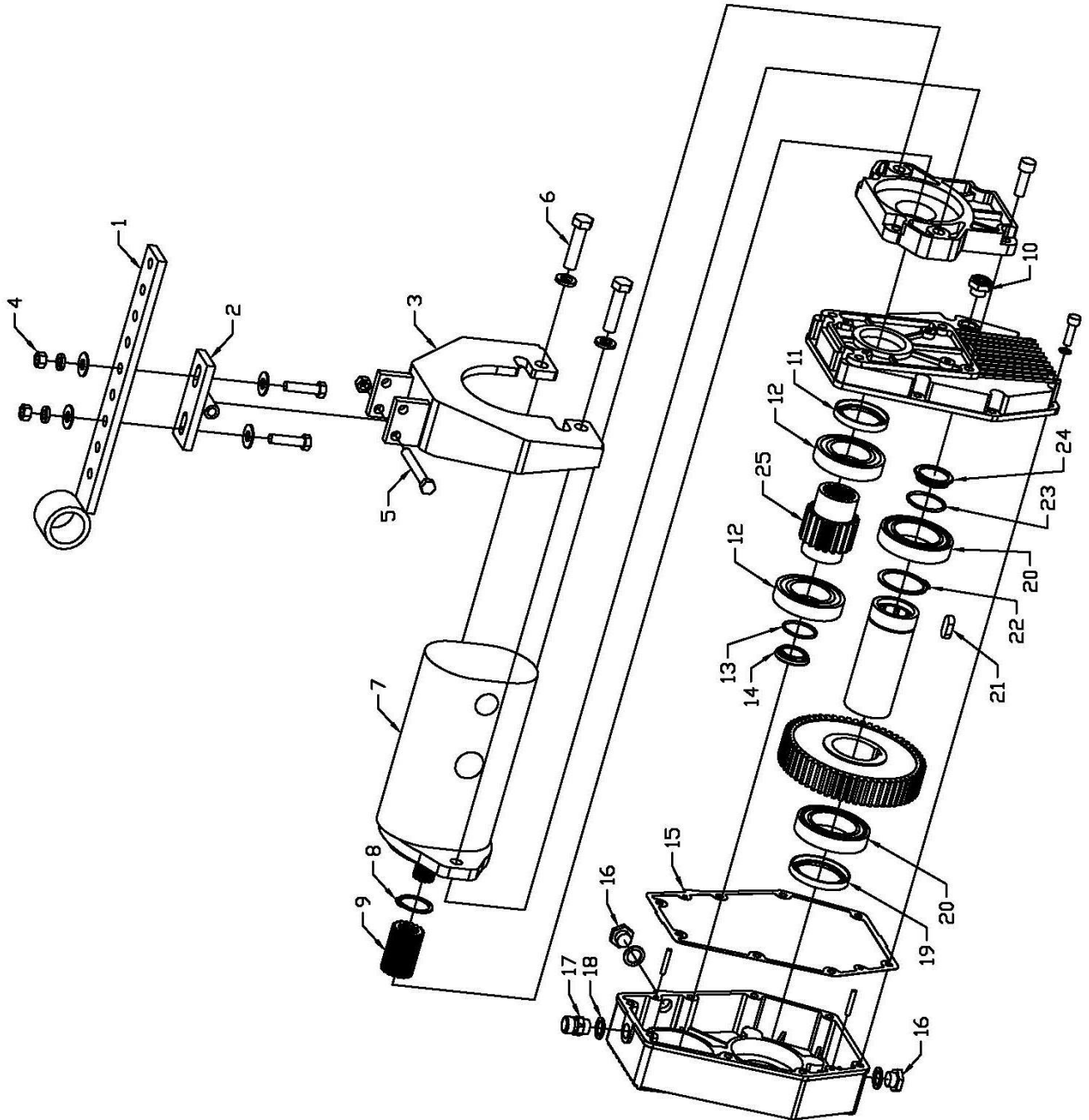
## HYDRAULIC TANK / INCREASER

Bervini Pump & Increaser - Parts List			
ITEM	QTY	PART NUMBER	DESCRIPTION
1	1	1B002	Swivel assembly arm (pump bracket)
2	1	1B003	Swivel assembly (pump bracket)
3	1	1B004-1	Base assembly (pump bracket)
4	2	13109	3/8"-16 x 1-1/2" Zinc Finish SAE J429 Gr 5 Hex Cap Screw
	2	36306	3/8"-16 Zinc Finish Grade 5 Finished Hex Nut
	2	33893	3/8" Yellow Zinc Finish High Alloy Medium Split Lock Washer
	4	33859	3/8" Yellow Zinc Finish USS Thru-Hardened Flat Washer
5	1	13117	3/8"-16 x 3-1/2" Grade 5 Zinc Finish Hex Cap Screw
	1	37264	3/8"-16 Zinc Finish Grade C Top Lock Nut
6	2	38716	M12-1.75 x 80mm DIN 931 Class 8.8 Zinc Cap Screw
	2	33895	1/2" Yellow Zinc Finish High Alloy Medium Split Lock Washer
7	1	HP001-TPSDARSR	Tandem Pump
8	1	42201900	Snap Ring
9	1	31025100	Spline Shaft Coupling
10	1	45112400000	Sight Glass
11	1	17750	Shaft Seal, Spline Shaft to Pump
12	2	6009	Bearing, Spline Shaft to Pump
13	1	44115200	O-ring for Cap in Spline Shaft
14	1	39207800	Plastic Plug for Spline Shaft
15	1	39205000	Housing Gasket
16	2	60310400	Plug, 3/8" NPT
17	1	49101700	Breather Plug, 3/8" NPT
18	3	39207100	Plug Gasket
19	1	19605	Shaft Seal, Female PTO Shaft
20	2	6010-JEM	Bearing, Female PTO Shaft
21	1	43201100	Key for PTO Shaft
22	1	42201200	Snap Ring, PTO Shaft
23	1	44115300	O-ring for Cap PTO Shaft
24	1	39207900	Plastic Plug for PTO Shaft
25	1	34243200	Pinion Gear For H1001-B
	1	H1001-B	Increaser; Includes Item 10 thru 25

NOTE: Items not called out in illustration are **non-serviceable** parts



## Bervini Pump & Increaser



---

## HYDRAULIC JACK / INCREASER

---

This image shows a full page of blank white paper with horizontal ruling lines. The lines are evenly spaced and run across the width of the page, typical of notebook or legal stationery. There are no margins, text, or other markings present.