

# MAGNUM SRA SERIES

## PARTS MANUAL



**MAGNUM 300SRA**  
**MAGNUM 420SRA**  
**MAGNUM 480SRA**

Bucyrus Equipment Co., Inc.  
PO Box 156, 209 Central  
Hillsdale, Ks 66036  
1-800-330-0857  
[www.magnumenp.com](http://www.magnumenp.com)

RE-ORDER NUMBER: SRAMANUAL  
REVISION: SRA-100025





## **SRA SERIES**

# **MAGNUM 300SRA/420SRA/480SRA PARTS MANUAL**

The purpose of this manual is for parts identification of the Magnum SR series harvester. This manual is not to be used for assembly. This manual includes parts lists and illustrations of all available replacement parts for the Magnum SR series harvesters. A table of contents is placed at the beginning of the manual for location of specific parts. Keep this manual available for reference in the shop area.

At the time of publication all information contained in this manual was technically correct. However, all materials and specifications are subject to change without notice.

Comments and suggestions about this manual may be directed to: Bucyrus Equipment Co., Inc., PO Box 156-209 Main, Hillsdale, KS 66036. Phone 1-800-330-0857

©Copyright 2005 BECI. All information contained within this publication is based on the latest product information at the time of publication. Due to constant improvements in the design and quality of production components, some minor discrepancies may result between the actual vehicle and the information presented in this publication. Depictions and/or procedures in this publication are intended for reference use only. No liability can be accepted for omissions or inaccuracies. Any reprinting or reuse of the depictions and/or procedures contained within, whether whole or in part, is expressly prohibited. Printed in U.S.A.

## TABLE OF CONTENTS

Section 1 .....	420/480 Floating Heads
Section 2 .....	420/480 Solid Heads / Coulter Option
Section 3 .....	300 Solid Heads / Coulter Option
Section 4 .....	Depth Control
Section 5 .....	1 <sup>st</sup> Conveyor
Section 6 .....	2 <sup>nd</sup> Conveyor
Section 7 .....	Chop Offs
Section 8 .....	Net Dispenser
Section 9 .....	Tube Racks
Section 10 .....	Control Panel Box
Section 11 .....	Wheel/Hub & Pulse Pickup Assembly
Section 12 .....	Auto Steer
Section 13 .....	Hydraulic Components
Section 14 .....	Flow Control Valve
Section 15 .....	Chop Valve

**Section 16 ..... Accumulator**

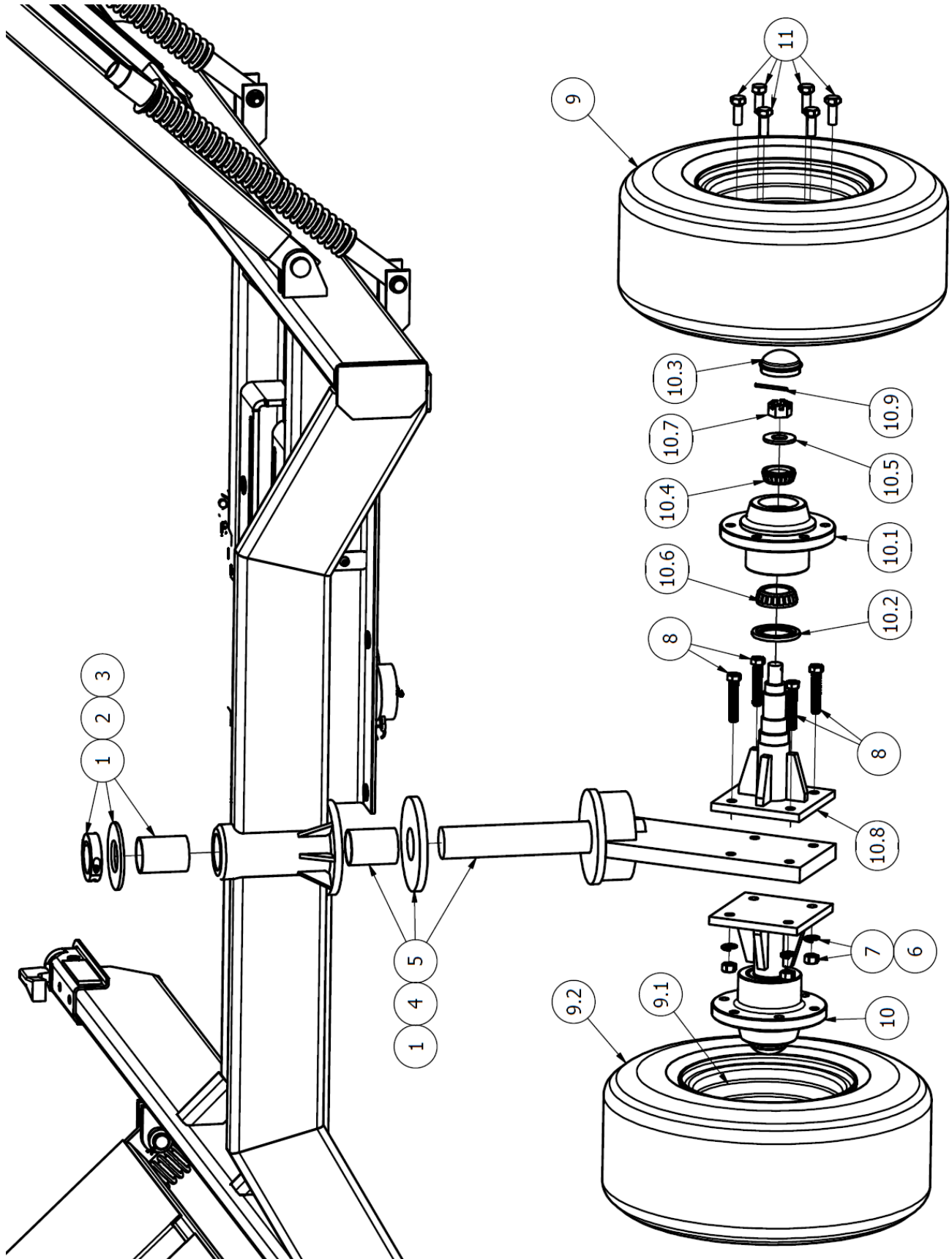
**Section 17 ..... Hydraulic Tank & Increaser**

**Section 18 ..... Hose/Hardline Mounts**

**Section 19 ..... Electrical Components**

## TIPPER CRAZY WHEEL

Parts List			
ITEM	QTY	PART NUMBER	DESCRIPTION
1	2	EP3236-48	2" ID X 0.125 WALL BUSHING
2	1	33495	2" x 14GA. WASHER
3	1	2C-200	2" 2PC SPLIT COLLAR
4	1	480TTCW100	PIVOT WHEEL SPINDLE
5	1	480TTCW004	UHMW BEARING PLATE
6	10	33895	1/2" LOCK WASHER
7	10	36310	1/2"-13 HEX NUT
8	4	0144579	1/2"-13 X 2 3/4" CAPSCREW, GR8
9	2	10X6RIM/10N95	WHEEL & TIRE ASSEMBLY
9.1	1	10X6RIM	RIM
9.2	1	10N95	TIRE, 20.5X8.0
10	2	W888	HUB ASSEMBLY
10.1	1	W003	HUB
10.2	1	W001	DUST SEAL
10.3	1	W007	DUST CAP
10.4	1	W004	OUTER CONE BEARING
10.5	1	W005	7/8" FLAT WASHER
10.6	1	DU003	OUTER CONE BEARING
10.7	1	DU007	SPINDLE NUT, 783 SPINLDE
10.8	1	W888A	SPINDLE WELDMENT
10.9	1	65106	5/32 X 1 3/4" COTTER PIN
11	12	12LUG	1/2"-20 LUG BOLT



## TIPPER CRAZY WHEEL

**NOTES:**

This image shows a single sheet of white paper with horizontal blue or grey ruling lines. The lines are evenly spaced and run across the width of the page. There are no margins, text, or other markings on the paper.