

MAGNUM BR SOD HARVESTER PARTS MANUAL



Bucyrus Equipment Co., Inc.
Box 156, 209 Central Ave.
Hillsdale, Ks 66036
1-800-330-0857
www.magnumenp.com

RE-ORDER NUMBER: BRPTSMANUAL
REVISION: BRM-100017



MAGNUM BR SOD HARVESTER PARTS MANUAL

The purpose of this manual is for parts identification of the Magnum BR sod harvester. This manual is not to be used for assembly. This manual includes parts lists and illustrations of all available replacement parts for the Magnum BR harvesters. A table of contents is placed at the beginning of the manual for location of specific parts. Keep this manual available for reference in the shop area.

At the time of publication all information contained in this manual was technically correct. However, all materials and specifications are subject to change without notice.

Comments and suggestions about this manual may be directed to: Bucyrus Equipment Co., Inc., PO Box 156-209 Main, Hillsdale, KS 66036. Phone 1-800-330-0857

©Copyright 2005 BECI. All information contained within this publication is based on the latest product information at the time of publication. Due to constant improvements in the design and quality of production components, some minor discrepancies may result between the actual vehicle and the information presented in this publication. Depictions and/or procedures in this publication are intended for reference use only. No liability can be accepted for omissions or inaccuracies. Any reprinting or reuse of the depictions and/or procedures contained within, whether whole or in part, is expressly prohibited. Printed in U.S.A.

TABLE OF CONTENTS

Section 1	32/42/48 Floating Heads
Section 2	42/48 Solid Heads / Coulter Option
Section 3	30 Solid Heads / Coulter Option
Section 4	Depth Control
Section 5	1st & 2ND Conveyor
Section 6	Wheel and Cooler
Section 7	Electrical Components
Section 8	Hydraulics
Section 9	Increaser Pump
Section 10	Dual Kit
Section 11	Decals

INCREASER PUMP

Contents

Description	Page
Bervini Pump and Increaser	9.2-9.3
Cross Pump and Increaser	9.4-9.5

INCREASER PUMP

Bervini Pump & Increaser - Parts List

ITEM	QTY	PART NUMBER	DESCRIPTION
1	1	1B002	Swivel assembly arm (pump bracket)
2	1	1B003	Swivel assembly (pump bracket)
3	1	1B004-1	Base assembly (pump bracket)
4	2	13109	3/8"-16 x 1-1/2" Zinc Finish SAE J429 Grade 5 Hex Cap Screw
	2	36306	3/8"-16 Zinc Finish Grade 5 Finished Hex Nut
	2	33893	3/8" Yellow Zinc Finish High Alloy Medium Split Lock Washer
	4	33859	3/8" Yellow Zinc Finish USS Thru-Hardened Flat Washer
5	1	13117	3/8"-16 x 3-1/2" Grade 5 Zinc Finish Hex Cap Screw
	1	37264	3/8"-16 Zinc Finish Grade C Top Lock Nut
6	2	38716	M12-1.75 x 80mm DIN 931 Class 8.8 Zinc Cap Screw
	2	40385	M12 DIN 127 Zinc Plated Split Lock Washer
7	1	HP001-TPSD	Tandem Pump
8	1	42201900	Snap ring
9	1	31025100	Spline Coupler
10	1	45112400000	Sight Glass
11	1	44102200	Shaft Seal, Spline Shaft to Pump
12	2	44000300	Bearing, Spline Shaft to Pump
13	1	44115200	O-ring for Cap in Spline Shaft
14	1	39207800	Plastic Plug for Spline Shaft
15	1	39205000	Housing Gasket
16	2	60310400	Plug, 3/8" NPT
17	1	49101700	Breather Plug, 3/8" NPT
18	4	DS-BSP-06	Bonded Seal
19	1	44103100	Shaft Seal, Female PTO Shaft
20	2	44001200	Bearing, Female PTO Shaft
21	1	43201100	Key for PTO Shaft
22	1	42201200	Snap Ring, PTO Shaft
23	1	44115300	O-ring for Plug PTO Shaft
24	1	39207900	Plastic Plug for PTO Shaft
25	1	34243200	Pinion Gear For H1001-B
	1	H1001-B	Increaser; Includes Item 10 thru 25

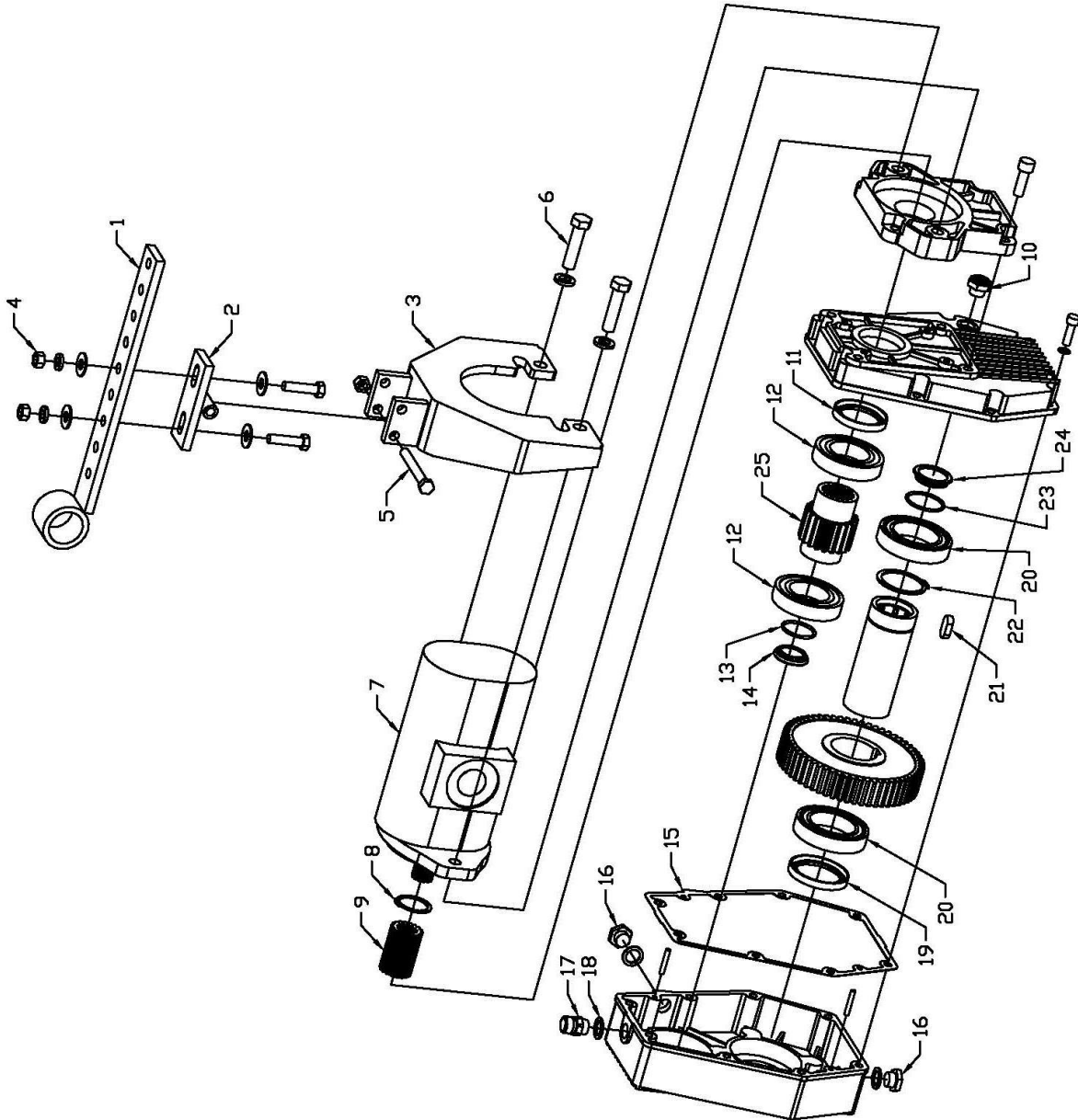
NOTE: Items not called out in illustration are **non-serviceable** parts

Repair Kit

		163S8143	Pump Seal Kit for Part Number HP001-TPSD
--	--	----------	------------------------------------------



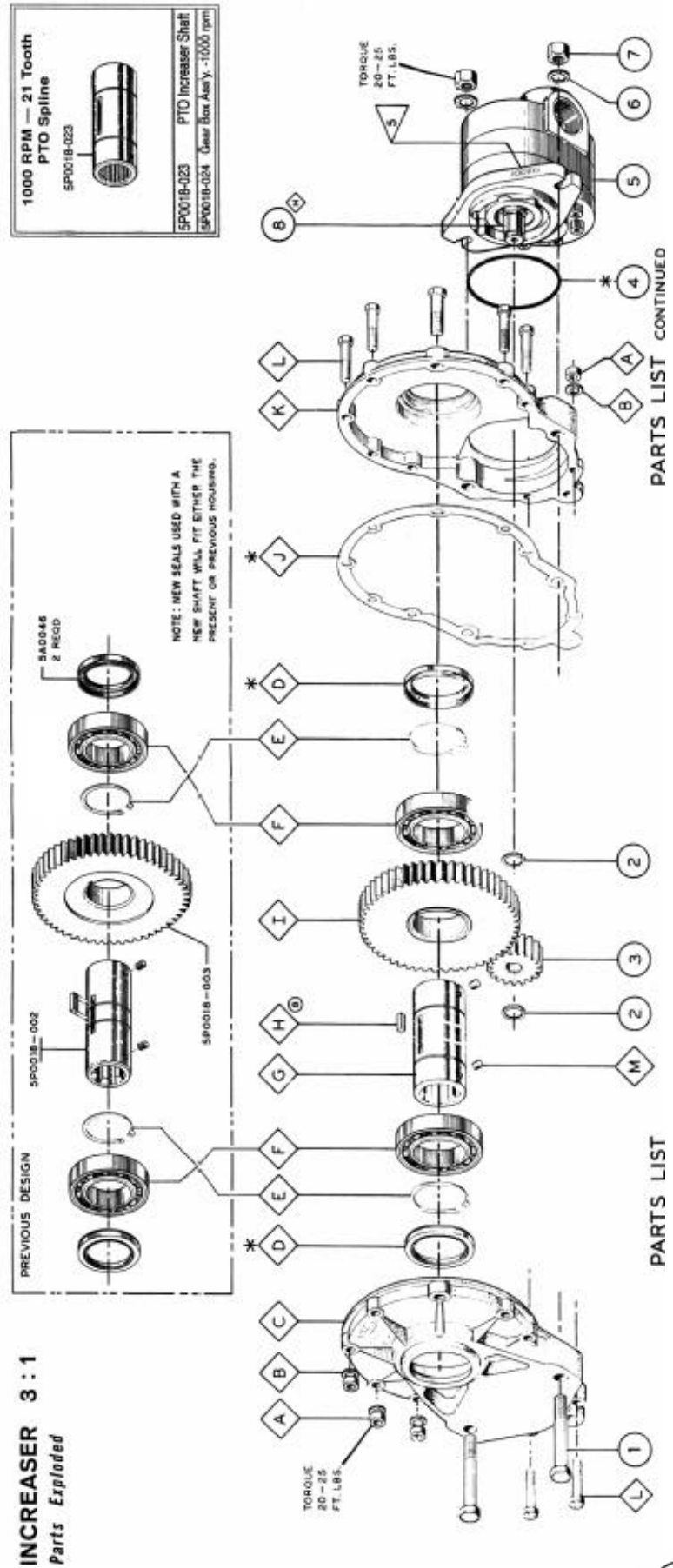
Bervini Pump & Increaser



INCREASER PUMP

Cross Pump & Increaser - Parts List			
ITEM	QTY	PART NUMBER	DESCRIPTION
1	2	2A0077-840	Cap screw
2	2	5A0069	Retaining Ring, External
3	1	5P0018-004	Increaser Gear
4	1	2A0283-7045	O-ring
5	1	HP001N	Pump
6	2	2A0736-108	Lock washer
7	2	2A0235-8	Nut
8	1	5A0068	Straight key
A	9	2A0235-6	Nut
B	9	2A0736-106	Lock washer
C	1	5P0018-011	Increaser Housing, Front
D	2	5A0104	Shaft Seal
E	2	2A0467-196	Retaining Ring, External
F	2	5A0039	Ball Bearing
G	1	5P0018-021	PTO Increaser Shaft
H	1	5A0068	Straight Key
I	1	5P0018-022	PTO Increaser Gear
J	1	5A0076	Increaser Housing Gasket
K	1	5P0018-010	Increaser Housing, Rear
L	9	2A0077-622	Cap screw
M	2	2A0506-505	Set Screw
Repair Kit			
		5P0017-006	Pump Seal Kit for Part Number

INCREASER PUMP



Cross Pump & Inreaser

This image shows a full page of blank, lined paper. It features approximately 28 horizontal black lines spaced evenly across the page, typical of standard notebook paper. The lines are thin and extend from the left edge to the right edge. There are no margins, text, or other markings on the page.