



# BROUWER

## ILLUSTRATED PARTS LIST

---

**MODEL:**

**ROLLMATE SOD LAYER 30" ROM2430**  
**SERIAL NO. 159 & UP**



*WARNING: If incorrectly used this machine can cause severe injury. Those who use and maintain this machine should be trained in its proper use, warned of its dangers and should read the entire manual before attempting to set up, operate, adjust or service the machine.*





## STATEMENT OF LIMITED WARRANTY

---

**Kesmac and Brouwer Turf** warrants its full line of equipment to be free from defects in material and factory workmanship for a period of 12 months. This warranty begins on the date of sale or use of the equipment to the original purchaser. This statement does not extend or limit engine, tractor or component warranties in which the engine, tractor or component manufacturers may carry extended time periods up to 24 months. Engine, tractor or component warranty claims will be subject to the engine, tractor or components manufacturer's approval.

**Replacement Parts** carry a 90 day replacement warranty and are reimbursed to the dealer. All electrical and hydraulic parts are limited by this policy and will only be covered upon approval by the service department after inspection of the part. The installation and removal of a part will automatically place that part under the replacement parts warranty.

This warranty is limited exclusively to equipment or accessories manufactured or supplied by **Kesmac and Brouwer Turf** and are subject to the inspection and analysis by the company to conclusively identify the nature and cause of failure.

**PRODUCT REGISTRATION FORM** must be completely filled out, signed by the customer at the original date of installation, and returned to **Kesmac and Brouwer Turf** before any claims will be considered.

**Kesmac and Brouwer Turf** reserves the right to incorporate improvements in material and design of its products without notice and is not obligated to make the same improvements to equipment previously manufactured.

**Kesmac and Brouwer Turf** is not obliged under any warranty policy different from the Kesmac Brouwer Turf warranty policy as published above.

### **KESMAC AND BROUWER TURF RESPONSIBILITIES**

**Kesmac and Brouwer Turf's** obligation under the terms of this warranty is limited to the repair, replacement or credit, at its option, of the equipment, parts or supply items that conform to its warranty.

#### **DEALER'S RESPONSIBILITIES**

1. Only factory-trained service or approved personnel will be permitted to perform warranty service on **Kesmac and Brouwer Turf** equipment.
2. All major warranty claims exceeding \$650.00 (in total including parts and labour) must be authorized by **Kesmac and Brouwer Turf** before work is performed.
3. All replacement parts used in warranty situations must be furnished by **Kesmac and Brouwer Turf** or approved by **Kesmac and Brouwer Turf** personnel. The use of non-recommended oil could nullify warranty.

#### **OWNERS RESPONSIBILITIES**

The owner is obligated to operate and maintain the equipment in accordance with the recommendations published by **Kesmac and Brouwer Turf** in the owners/operators manual for the unit. The owner is responsible for the costs associated with such maintenance and operating adjustments that may be required on a regularly scheduled basis. Where applicable the owner is responsible for transportation to and from the dealership or service calls made by the dealer.

#### **CONDITIONS THAT VOID WARRANTY**

This warranty shall not apply to equipment which:

- 1. Has had repairs or modifications not authorized by **Kesmac and Brouwer Turf**.
- 2. Has been subject to abuse, improper maintenance, or improper application.
- 3. Has been modified from original equipment specifications.

#### **WARRANTY EXCEPTIONS**

This warranty does not apply to the following items:

- 1. Wear items including blades, cutting edges, cutting arms, spark plugs, belts, filters, bearings, sprockets, chains, tires, light bulbs, lubricants and fluids etc. Cost of normal maintenance including replacement of service items.
- 2. Damages to engine/drive systems caused by lack of/or improper lubricants and/or fluids.
- 3. Damages arising from accident, misuse or neglect.
- 4. Damages to engine/drive systems caused by improper operation and/or maintenance.
- 5. **Kesmac and Brouwer Turf** will not be liable for any incidental or consequential damage or injuries, including but not limited to loss of profits, loss of crops, rental of substitute equipment, or other commercial loss or for damage to the equipment in which the Company Product is installed.

#### **FREIGHT CARRIER DAMAGE**

Claims for equipment damaged in transit should be referred to the freight carrier. Visible damage should be reported immediately and concealed damage as soon as possible, in accordance with freight carrier regulations.



# ROLLMATE SOD LAYER

## IMPORTANT

Your new **ROLLMATE SOD LAYER** has been designed and built to give many years of outstanding performance.

The service and reliability you receive from this product will be affected by the proper maintenance and operation of the machine.

It is important the operator of the machine follows all recommended operating procedures and service schedules, to ensure the safety of the machine, themselves and any bystanders.

It is not possible to list all situations that may effect the safety of the machine or the operators, therefore Brouwer cannot identify all precautions that may possibly prevent accidents.

The owner/operator must assume responsibility for their won safety, the safety of others and of the machine.

### BE A QUALIFIED OPERATOR BY:

- Reading and obeying the instructions in this manual and on the safety decals on the machine.
- Receiving training on the correct operation of the machine.
- Asking your supervisor or equipment dealer to explain anything you do not understand.
- Explaining the instructions in the operator's manual and safety decals to user/operators who cannot read or understand them.

### IF YOU DO NOT UNDERSTAND...ASK

Use only genuine Brouwer replacement parts. Parts not supplied by Brouwer may not meet factory specifications or standards of manufacture. The use of non-approved parts may result in component failure and result in an accident to the operator or bystanders.

The Brouwer **ROLLMATE SOD LAYER** must not be used for any purpose other than that for which it was designed.

Prior to shipping from the manufacturer the machines are inspected to insure that all safety guards, shields and warning/safety/operating decals are correctly positioned and secure.

The machine must not be used if any of the above items are missing or damaged.

TABLE OF CONTENTS	FIGURES	PAGE
CONTROLS .....	FIGURE 1 .....	2, 3
REAR DRIVE PARTS / BRAKE .....	FIGURE 2 .....	4, 5
FORWARD/REVERSE/THROTTLE CNTRLS ...	FIGURE 3 .....	6, 7
DRIVE BELTS .....	FIGURE 4 .....	8, 9
FRONT WHEEL ASSEMBLY .....	FIGURE 5 .....	10, 11
REAR WHEEL ASSEMBLY .....	FIGURE 6 .....	12, 13
LIFT FRAME .....	FIGURE 7 .....	14, 15
ENGINE/TANKS/SHIELDS .....	FIGURE 8 .....	16, 17
HYDRAULIC ASSEMBLY .....	FIGURE 9 .....	18, 19
DECALS .....	FIGURE 10 .....	20, 21
ELECTRICAL SCHEMATIC .....	FIGURE 11 .....	22, 23



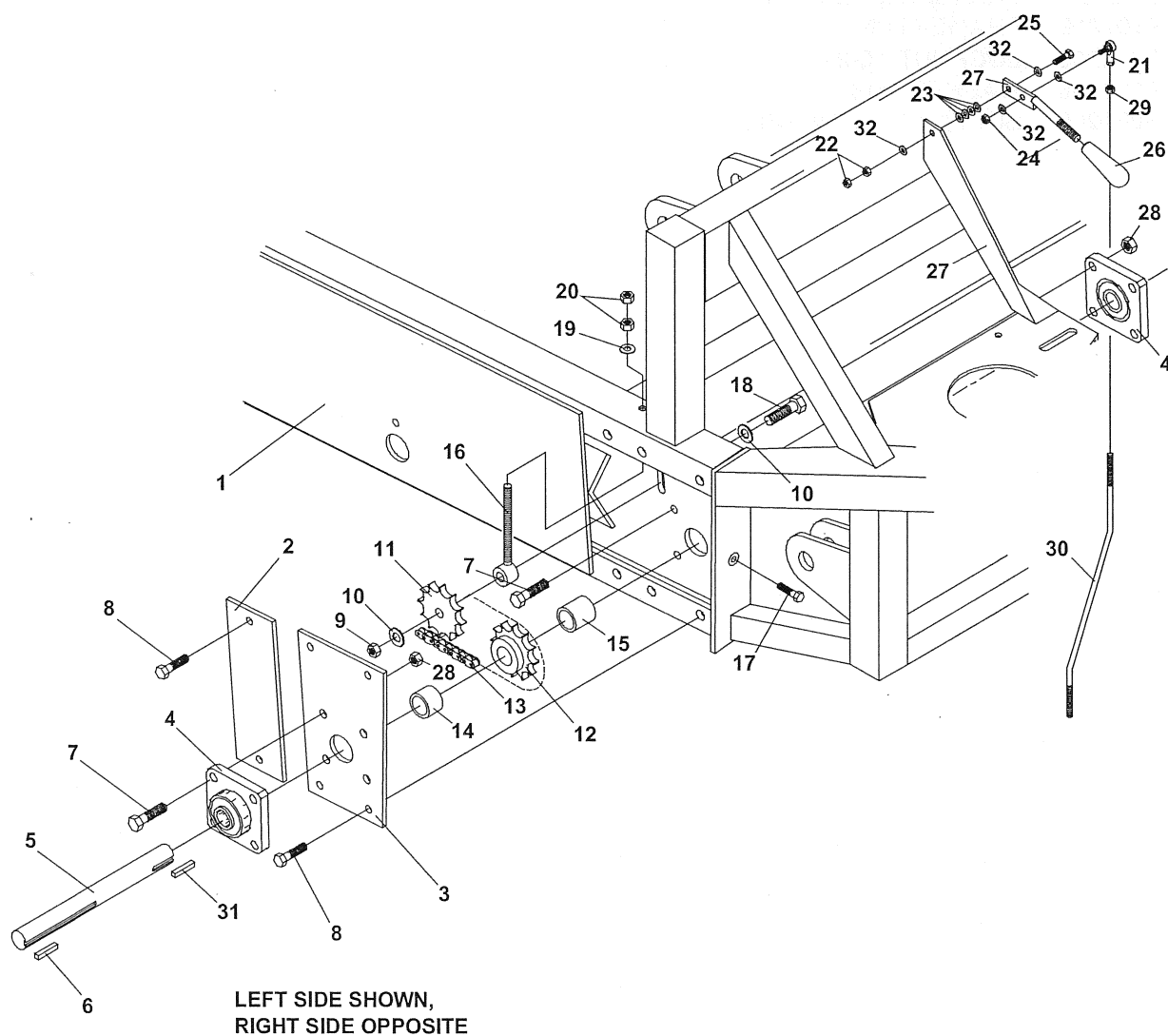
# ROLLMATE SOD LAYER

## CONTROLS

FIGURE 1

ITEM	PART NO.	DESCRIPTION	QTY	ITEM	PART NO.	DESCRIPTION	QTY
1-1	4160343	HANDLE WELD ASSY	1				
1-2	KD10052	CONTROL CABLE	2				
1-3	47-136	CABLE-THROTTLE CNTRL	1				
1-4	47-137	KNOB-THROTTLE	1				
1-5	F010522	BOLT 5/16 UNC X 2 1/2 GR.8	4				
1-6	F320500	FLATWASHER 5/16	4				
1-7	F210500	LOCKNUT 5/16 UNC	4				
1-8	KD10027	CONTROL HANDLE ASSY.	2				
1-9	51-038	TRANSAXLE, EATON	1				
1-10	6102212	FRAME-MAIN	1				
1-11	F210200	LOCKNUT 10-24	2				
1-12	F320200	WASHER 3/16	4				
1-13	F020206	BOLT 10-24 X 3/4 PHIL.	2				

FIGURE 2



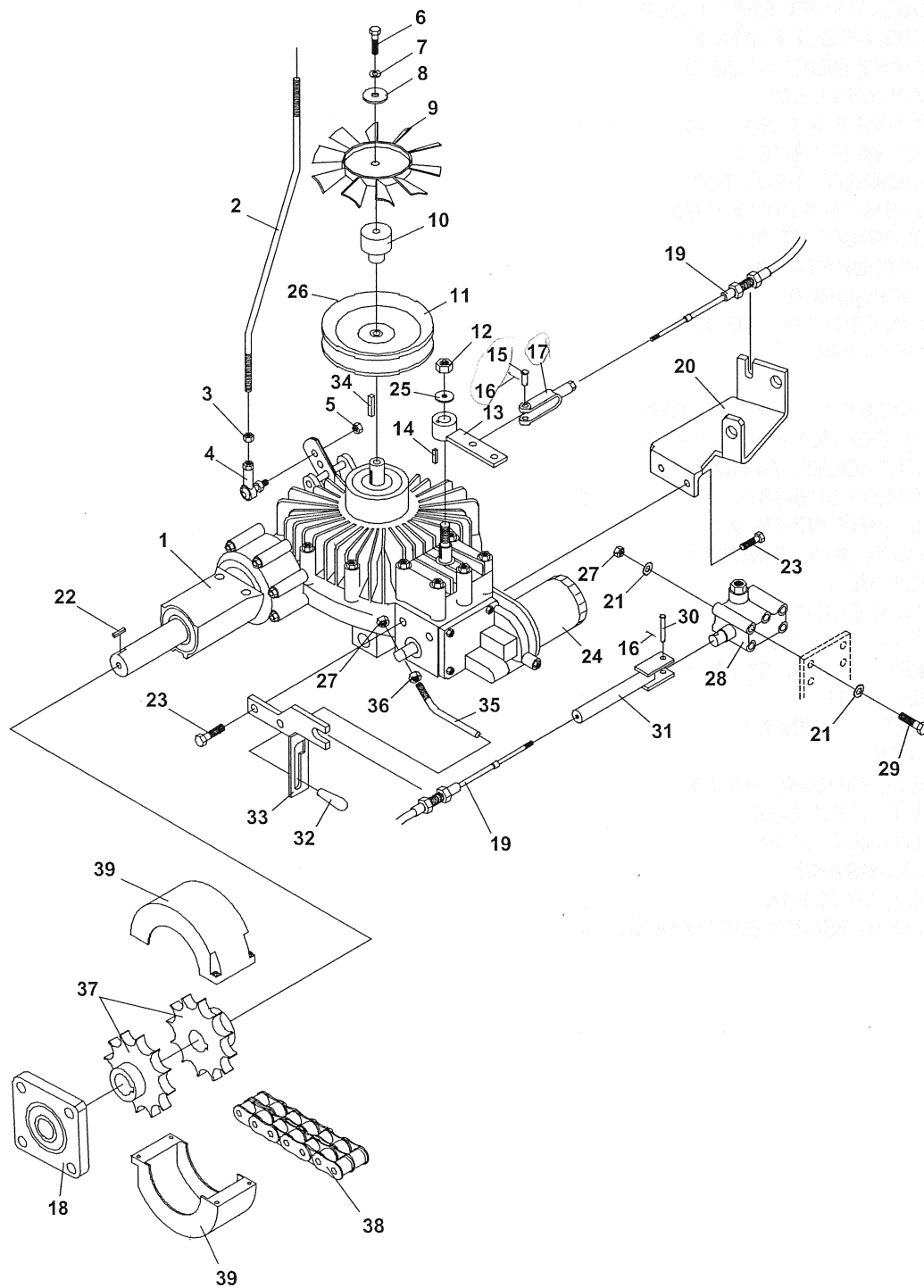
# ROLLMATE SOD LAYER

## REAR DRIVE PARTS / BRAKE

FIGURE 2

ITM	PART NO.	DESCRIPTION	QTY	ITM	PART NO.	DESCRIPTION	QTY
1	6102212	FRAME-MAIN	1				
2	6102006	RAIL-ACCESS PANEL	2				
3	6102005	RAIL-JKSHFT SPRKT CVR	2				
4	55-FB22016	BRG-4-BOLT FLANGE 1"	4				
5	6102161	SHAFT-REAR STUB 30"	2				
6	64164-12	KEY-1/4X1/4X1	2				
7	64139-18	BLT-WLF 3/8-16X1-1/4	16				
8	64139-24	BLT-WLF 3/8-16 X 1	12				
9	64229-05	LOCKNUT, 1/2-13 NYL	2				
10	64163-67	WASHER-.516X1X12GA	4				
11	83-5013E08	IDLER-SPRKT #50	2				
12	83-502016	SPROCKET-#50	2				
13	6102087	CHAIN-DRIVE	2				
	81-053	CONNECTOR LINK #50	1				
	81-055	HALF LINK #50	2				
14	6102129	SPACER-R SPRKT OUTER	2				
15	6102128	SPACER-R SPRKT INNER	2				
16	6102098	BRKT-IDLER WLDMT	2				
17	F2742	SCREW-5/16-18 X 3/4	2				
18	64123-72	BLT-HEX 1/2-13X2-1/2	2				
19	64163-61	WSHR .81X.406X16GA	2				
20	92-06H	NUT,3/8-16	4				
21	43-004SA	YOKE END-1/4-28	1				
22	64025-01	NUT-1/4-20 HEX	2				
23	64163-86	WSHR-.265 X .625 X .125	4				
24	99-A04NF	LOCKNUT-1/4	1				
25	64123-07	BOLT, 1/4-20X1-1/2	1				
26	47-114	KNOB	1				
27	6102115	LEVER-BRAKE HANDLE	1				
28	64141-4	NUT-WLF 3/8-16	16				
29	64025-23	NUT-HEX 1/4-28	1				
30	6102112	ROD-BRAKE	1				
31	85-K0412	KEY, 1/4 X 1-1/2	2				
32	64163-03	WSHR-.256IDX.62ODX18GA	4				

FIGURE 3



# ROLLMATE SOD LAYER

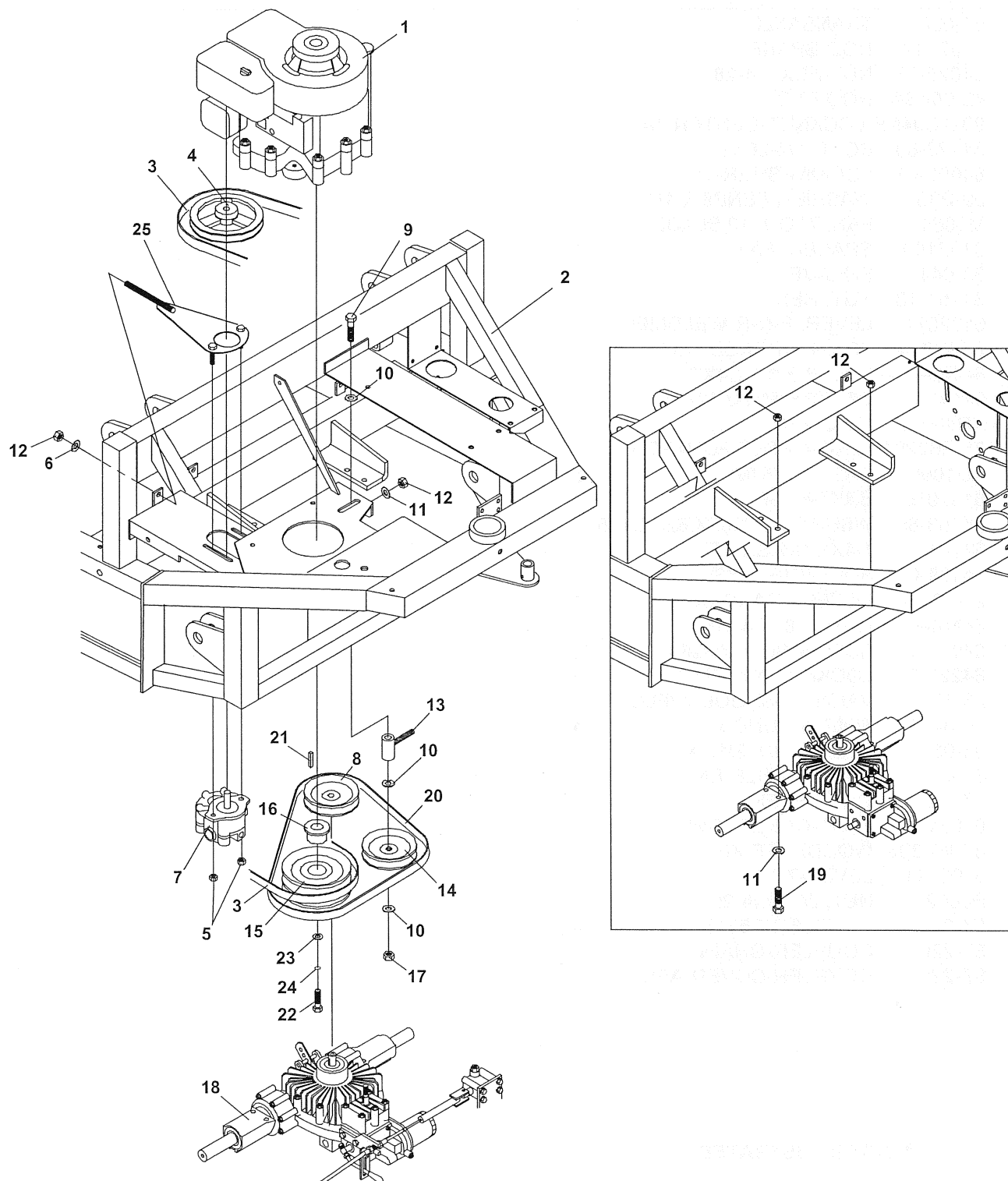
## FORWARD/REVERSE/THROTTLE CNTRL

FIGURE 3

ITEM	PART NO.	DESCRIPTION	QTY	ITEM	PART NO.	DESCRIPTION	QTY
3-1	51-038	TRANSAXLE	1				
3-2	6102112	ROD-BRAKE	1				
3-3	64025-23	NUT-HEX 1/4-28	1				
3-4	43-004SA	ROD END	1				
3-5	99-AC04NF	LOCKNUT-CENTER 1/4	1				
3-6	64123-60	BOLT, 1/4-20X2	1				
3-7	64006-01	LOCKWASHER-1/4	1				
3-8	99-B35	WASHER, FENDER 1/4"	1				
3-9	M5064	FAN, 7" OD, 10 BLADE	1				
3-10	6102100	SPACER, FAN	1				
3-11	83-044	SHEAVE	1				
3-12	64151-18	NUT, HEX	1				
3-13	6102074	LEVER, F-N-R WELDMENT	1				
3-14	85-W0204	KEY,HARDENED 1/8 X .491	1				
3-15	<del>64188-06</del>	<del>PIN, CLEVIS 1/4X.77</del>	2				
3-16	<del>64140-3</del>	<del>COTTER PIN-3/32X3/4</del>	3				
3-17	KD10026	YOKE END	1				
3-18	55-FB22016	BRG-4-BOLT FLANGE 1"	2				
3-19	KD10052	CABLE F/PUMP	2				
3-20	6102075	BRKT-F-N-R	1				
3-21	64163-86	WSHR-FLAT.265X.625X.125	8				
3-22	64164-13	1/4X1/4X2 SQ KEY	2				
3-23	64139-08	BOLT-5/16-18X3/4	4				
3-24	21-103144	FILTER-TRANSAXLE	1				
3-25	64163-61	WSHR .81X.406X16	1				
3-26*	64044-13	SCREW-SET 1/4-28X1/4	2				
3-27	64229-01	LOCKNUT-NYLON 1/4-20	5				
3-28	23-137	VALVE, 1-SPOOL W/FLOAT	1				
3-29	90-0424	BOLT 1/4 UNC x 3	4				
3-30	03-0310	CLEVIS PIN, 3/16 X 1-1/4	1				
3-31	6102132	VALVE-CABLE END	1				
3-32	47-122	CAP, LEVER	1				
3-33	6102110	BRKT-CABLE/TOW WLDMT	1				
3-34	85-W0305	WOODRUFF KEY	1				
3-35	6102111	LEVER-TOW	1				
3-36	F1002	NUT, JAM 1/4-20	1				
3-37	87-219	COUPLER-C5016 X 1"	4				
3-38	87-220	COUPLER-CHAIN	2				
3-39	87-221	COUPLER-COVER ASSY	2				

\* NOT ILLUSTRATED

FIGURE 4



# ROLLMATE SOD LAYER

## DRIVE BELTS

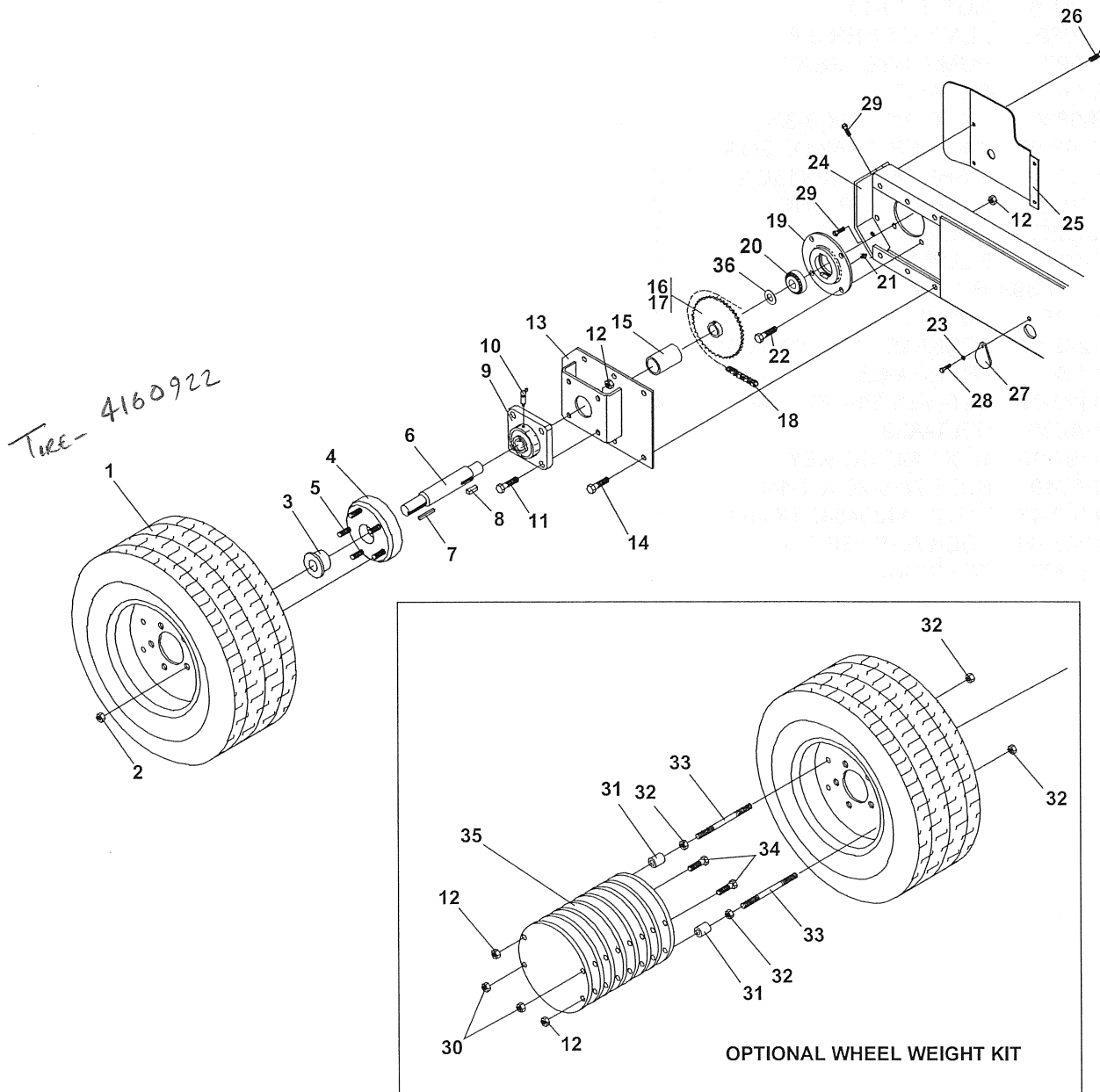
FIGURE 4

ITEM	PART NO.	DESCRIPTION	QTY	ITEM	PART NO.	DESCRIPTION	QTY
4-1	13-110	ENGINE-HONDA 11 HP	1				
4-2	6102212	FRAME-MAIN	1				
4-3	D2115	BELT-A31	1				
4-4	83-AK6408	SHEAVE	1				
4-5	64141-6	NUT, 5/16-18	2				
4-6	F320600	FLATWASHER 3/8	1				
4-7	21-097	PUMP, HYD. GEAR	1				
4-8	83-044	SHEAVE	1				
4-9	90-0830	BOLT, 1/2-13 X 3-3/4	1				
4-10	64163-67	WASHER-.516X1X12GA	3				
4-11	64163-61	WSHR .81X.406X16GA	5				
4-12	F210600	LOCKNUT 3/8 UNC	6				
4-13	6102205	IDLER ADJUSTER	1				
4-14	83-012	PULLEY, IDLER	1				
4-15	83-2AK39H	SHEAVE	1				
4-16	83-H16	BUSHING	1				
4-17	64229-05	LOCKNUT, 1/2-13 NYLON	1				
4-18	51-038	TRANSAXLE	1				
4-19	64123-79	BLT-HEX 3/8-16X3-1/4	4				
4-20	81-A039	BELT-A39	1				
4-21	64164-13	1/4X1/4X2 SQ KEY	1				
4-22	91-0710	BOLT, 7/16-20 X 1-1/4	1				
4-23	64163-43	WSHR.443/.454X1X11GA	1				
4-24	64006-06	LOCKWASHER-7/16	1				
4-25	4160672	TENSIONER	1				

# FRONT WHEEL ASSEMBLY

ROLLMATE  
SOD LAYER

FIGURE 5



# ROLLMATE SOD LAYER

## FRONT WHEEL ASSEMBLY

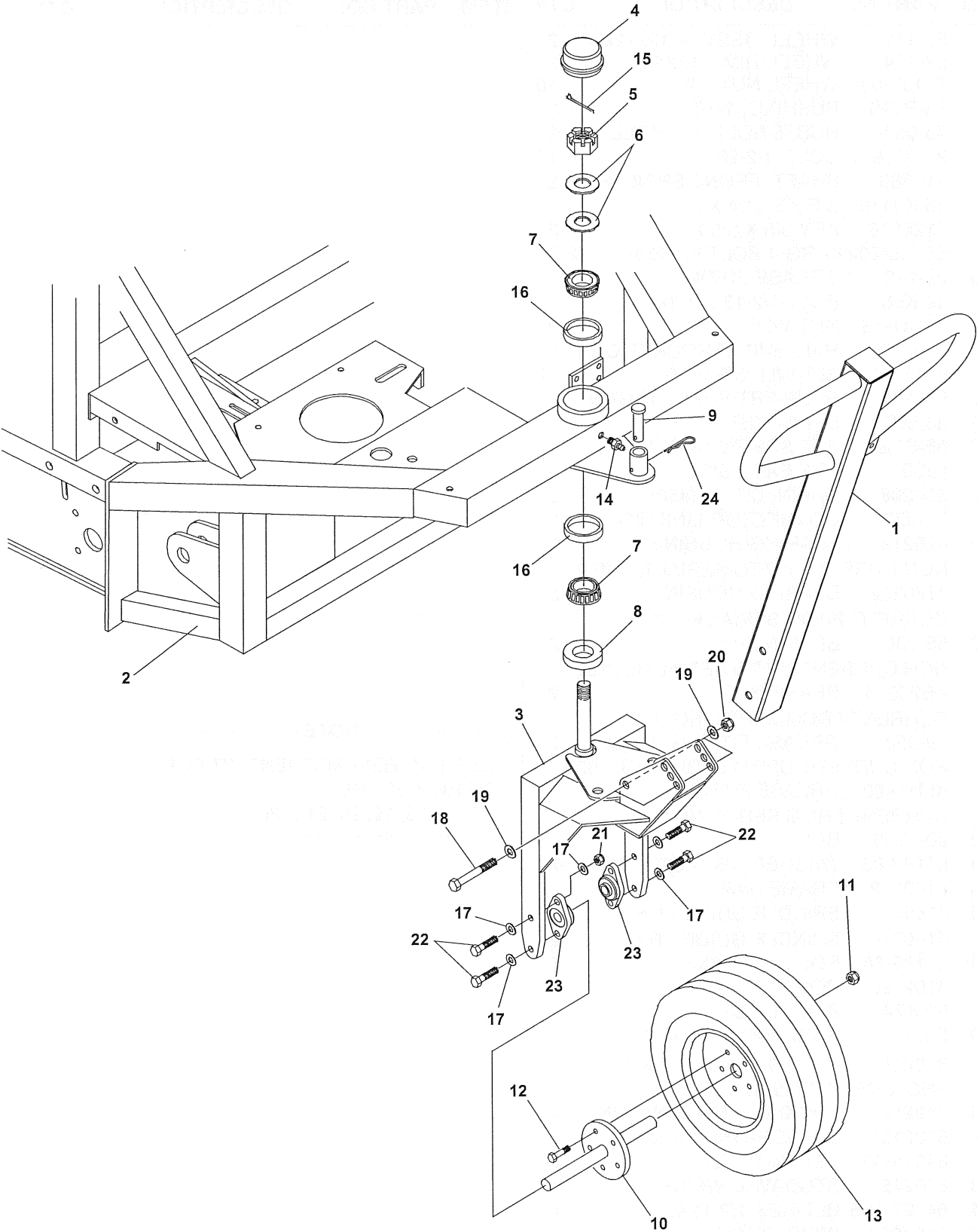
FIGURE 5

ITEM	PART NO.	DESCRIPTION	QTY	ITEM	PART NO.	DESCRIPTION	QTY
5-1	53-173	WHEEL ASSY. - 12x12x24	2				
	53-174	WHEEL RIM - 12X9.5	2				
5-2	64187-03	WHEEL NUT 1/2-20	10				
5-3	83-P118	BUSHING, 1-1/8" P1	2				
5-4	53-059	HUB, 5-BOLT, 1/2"HOLES	2				
5-5	91-0816-8	BOLT, 1/2-20	10				
5-6	4148837	SHAFT, FRONT SPINDLE	2				
5-7	85-K0416	S/B KEY,1/4 X 2	2				
5-8	5126616	KEY-3/8 X 3/8 X 1	2				
5-9	55-FB22024	BRG-4-BOLT FLANGE 1-1/2	2				
5-10	29-119	GREASE FITTING	2				
5-11	99-K56	BOLT-1/2-13 X 1-1/2	8				
5-12	64141-13	NUT WLF 1/2-13	20				
5-13	6102184	RAIL-HUB SPROCKET CVR.	2				
5-14	64139-24	BLT-WLF 3/8-16 X 1	12				
5-15	6102127	SPCR-FRT SPRKT (OUTER)	2				
5-16	83-50B41	SPROCKET	2				
5-17	85-SS20	SET SCREW-1/4 X 1/2 (USE QTY 2 ON EACH SIDE)	4				
5-18	6102087	CHAIN, DRIVE (#50)	2				
	81-053	CONNECTOR LINK, #50	2				
5-19	6102183	BEARING HOUSING	2				
		NON CURRENT UP TO SERIAL NO. 162					
	4160822	BEARING HOUSING	2				
		CURRENT FROM SERIAL NO. 163					
5-20	55-100	BEARING-1"	2				
		NON CURRENT UP TO SERIAL NO. 162					
	KB20516	BEARING-1"	2				
		CURRENT FROM SERIAL NO. 163					
5-21	29-053	GREASE FITTING, 1/4-28	2				
		NON CURRENT UP TO SERIAL NO. 162					
	KM11400	GREASE FITTING	2				
		CURRENT FROM SERIAL NO. 163					
5-22	90-0808	BOLT	8				
5-23	64163-86	WASHER-.265X.625X.125	2				
5-24	6102212	FRAME-MAIN	1				
5-25	4160715	SPINDLE GUIDE - L.H.	2				
	4160716	SPINDLE GUIDE - R.H.	2				
5-26	64139-08	BOLT-5/16-18X3/4	8				
5-27	6102120	COVER PLATE	2				
5-28	99-K74	BOLT,1/4-20 X 1	2				
5-29	F2742	SCREW-5/16-18 X 3/4	4				
	6102158	OPT WHL WEIGHT KIT (INCLUDES ITEMS 30 - 35)	2				
5-30	64229-05	LOCKNUT, 1/2-13 NYLON	4				
5-31	6102157	SPACER-WHL WEIGHT	4				
5-32	64025-09	HEX, NUT 1/2-13	8				
5-33	6102156	STUD-WHL WEIGHT	4				
5-34	64123-135	BLT-HEX 1/2-13X5	4				
5-35	6102099	WEIGHT-WHL	16				
5-36	KB12849	THRUST WASHER	2				

### NOTE

BEARING REPLACEMENT KIT FOR  
55-100 & 6102183  
ITEMS 15, 19, 20, 21 & 36.

FIGURE 6



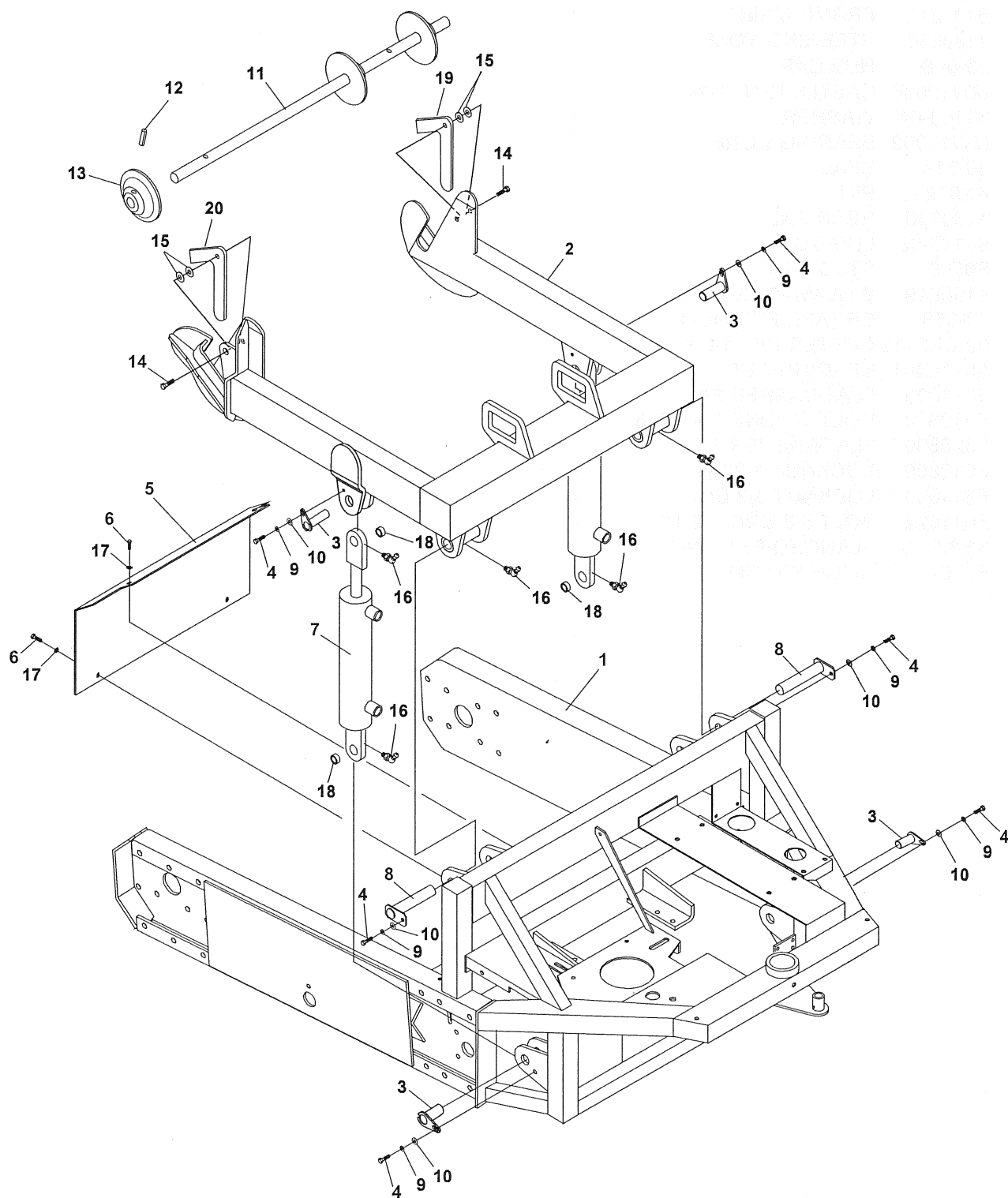
# ROLLMATE SOD LAYER

## REAR WHEEL ASSEMBLY

FIGURE 6

ITEM	PART NO.	DESCRIPTION	QTY	ITEM	PART NO.	DESCRIPTION	QTY
6-1	4160343	HANDLE	1				
6-2	6102212	FRAME-MAIN	1				
6-3	4160330	STEERING YOKE	1				
6-4	53-068	HUB CAP	1				
6-5	MW10006	CASTLE NUT, 1-14	1				
6-6	64163-64	WASHER	2				
6-7	MW10002	BEARING CONE	2				
6-8	89-017	SEAL	1				
6-9	KX01230	PIN	1				
6-10	4160340	REAR AXLE	1				
6-11	64187-03	LUG NUT	5				
6-12	F0708	STUD 1/2 N.F.X.	5				
6-13	4160649	WHL-W/20X10.00X10	1				
6-14	29-053	GREASE FITTING-1/4	1				
6-15	02-CP0412	COTTER PIN, 1/8 X 1-1/2	1				
6-16	MW10001	BEARING CUP	2				
6-17	F321000	FLATWASHER 5/8	8				
6-18	F010840	BOLT 1/2 UNC X 4 GR.8	4				
6-19	F320800	FLATWASHER 1/2	4				
6-20	F210800	LOCKNUT 1/2 UNC	2				
6-21	F211000	LOCKNUT 5/8 UNC	4				
6-22	F011022	BOLT 5/8 UNC X 2 1/4	4				
6-23	KB32020	FLANGED BEARING 1 1/4	2				
6-24	F940224	HITCH PIN CLIP	2				

FIGURE 7



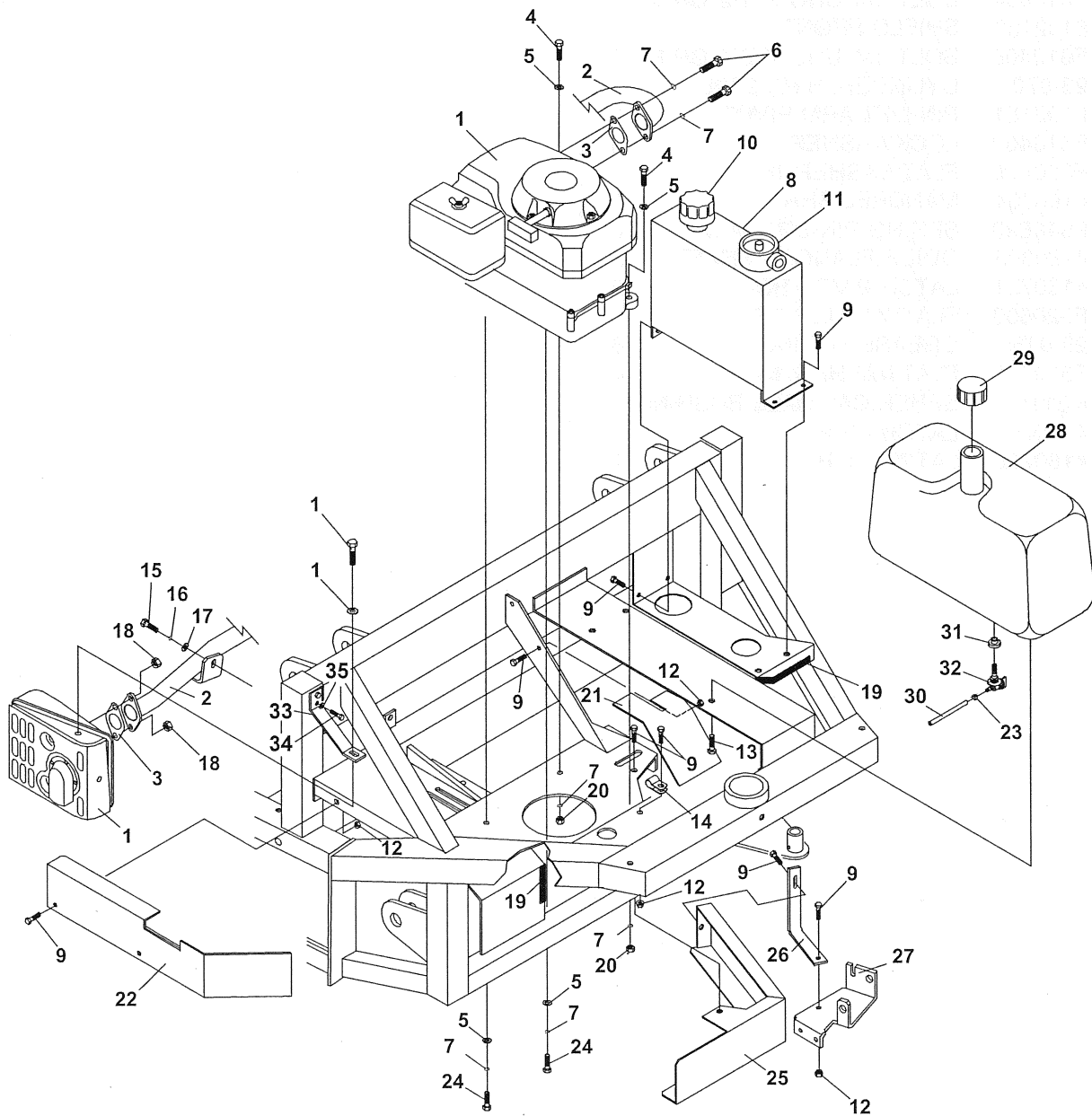
# ROLLMATE SOD LAYER

## LIFT FRAME

FIGURE 7

ITEM	PART NO.	DESCRIPTION	QTY	ITEM	PART NO.	DESCRIPTION	QTY
7-1	6102212	MAIN FRAME	1				
7-2	4160286	LIFT FRAME	1				
7-3	4160739	PIN-LIFT ARM CYLINDER	2				
7-4	F010404	BOLT 1/4 UNC X 1/2 GR.8	4				
7-5	6102133	SHIELD-FRONT	1				
7-6	F010406	BOLT 1/4 UNC X 3/4 GR.8	6				
7-7	23-070	CYLINDER, HYD. 2 X 8	2				
7-8	6102151	PIN-LIFT ARM PIVOT	2				
7-9	F310400	LOCKWASHER 1/4	6				
7-10	F320400	FLATWASHER 1/4	6				
7-11	4160304	MANDREL SHAFT	1				
7-12	F940620	SPRING PIN 3/8 DIA. X 2	3				
7-13	4160305	GUIDE FLANGE - SHAFT	2				
7-14	4160721	LATCH PIVOT BOLT	2				
7-15	F320600	FLATWASHER 3/8	4				
7-16	29-045	GREASE FITTING	6				
7-17	F320400	FLATWASHER 1/4	4				
7-18	KB11016	SPHERICAL BALL BUSHING	4				
7-19	4160300	LATCH - R.H.	1				
7-20	4160299	LATCH - L.H.	1				

FIGURE 8



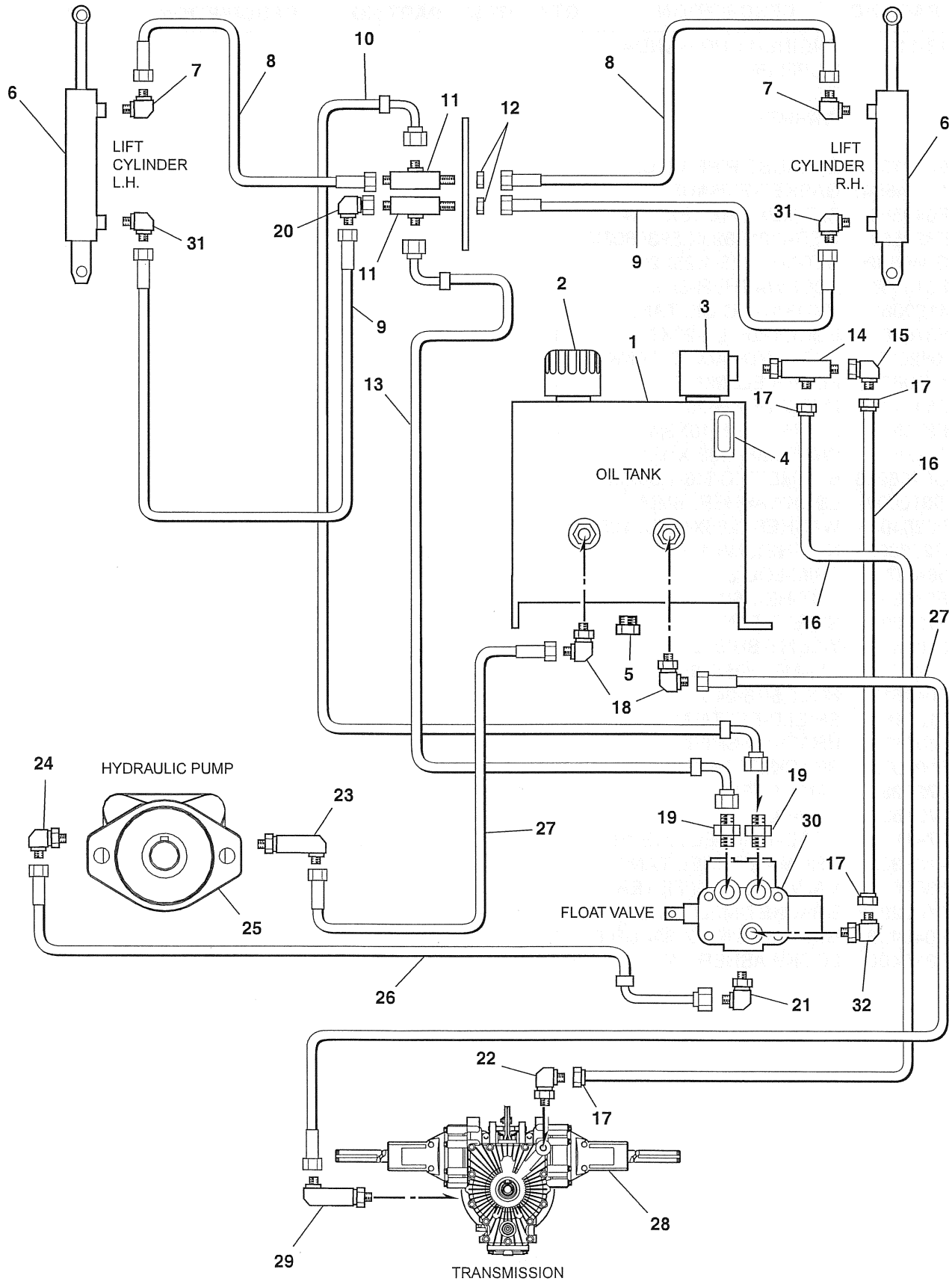
# ROLLMATE SOD LAYER

## ENGINE/TANKS/SHIELDS

FIGURE 8

ITEM	PART NO.	DESCRIPTION	QTY	ITEM	PART NO.	DESCRIPTION	QTY
9-1	13-110	ENGINE-11 HP HONDA	1				
		MUFFLER	1				
		BOLT	1				
		WASHER	1				
9-2	6102198	EXHAUST PIPE WLDMT	1				
9-3	13-445547	GASKET-EXHAUST	1				
9-4	F040516	BLT-HEX 5/16-18X1-3/4	2				
9-5	F320508	WSR-.321/.328X.593/.608X11	4				
9-6	G0408020	BLT-MET M8-1.25X20	2				
9-7	F310508	LOCKWASHER-5/16	6				
9-8	4160380	HYDRAULIC OIL TANK	1				
9-9	F870407	BOLT-WLF 1/4-20X3/4	11				
9-10	KH20177	CAP. HYDRAULIC TANK	1				
9-11	4160652	FILTER ELEMENT	1				
9-12	F840400	NUT-WLF 1/4-20	5				
9-13	F870606	BLT-WLF 3/8-16X3/4	4				
9-14	11-019	WIRECLIP-9/32 X 1/2	1				
9-15	G0406020	BLT-METRIC M6-1.00X20	1				
9-16	G310600	LOCKWASHER, 6MM	1				
9-17	F320408	WASHER-.265X.625X.125	1				
9-18	G230800	NUT-HEX,M8-1.25	2				
9-19	56-027	TRIM-LOC 8"	1				
9-20	F230508	NUT-HEX 5/16-18	2				
9-21	6102208	SHIELD-FAN	1				
9-22	6102210	WLDMT-SHIELD	1				
9-23	11-017	CLAMP-HOSE 5/8"	2				
9-24	F040510	BOLT,5/16-24 X 1	2				
9-25	6102180	SHIELD-BELT/FAN	1				
9-26	6102179	BRACKET-SHIELD	1				
9-27	6102075	BRACKET- F/N/R	1				
9-28	2722286	TANK-FUEL	1				
9-29	2721520	CAP-FUEL	1				
9-30	27-001	HOSE-1/4 FUEL LINE 18"	1				
9-31	4132325	GROMMET-FUEL TANK	1				
9-32	38540	VALVE-FUEL W/FILTER	1				
9-33	6102207	BRACKET-MFLR. SUPPORT	1				
9-34	F040406	BOLT 1/4 UNC X 3/4 GR.8	1				
9-35	F310408	LOCKWASHER 1/4	1				

FIGURE 9



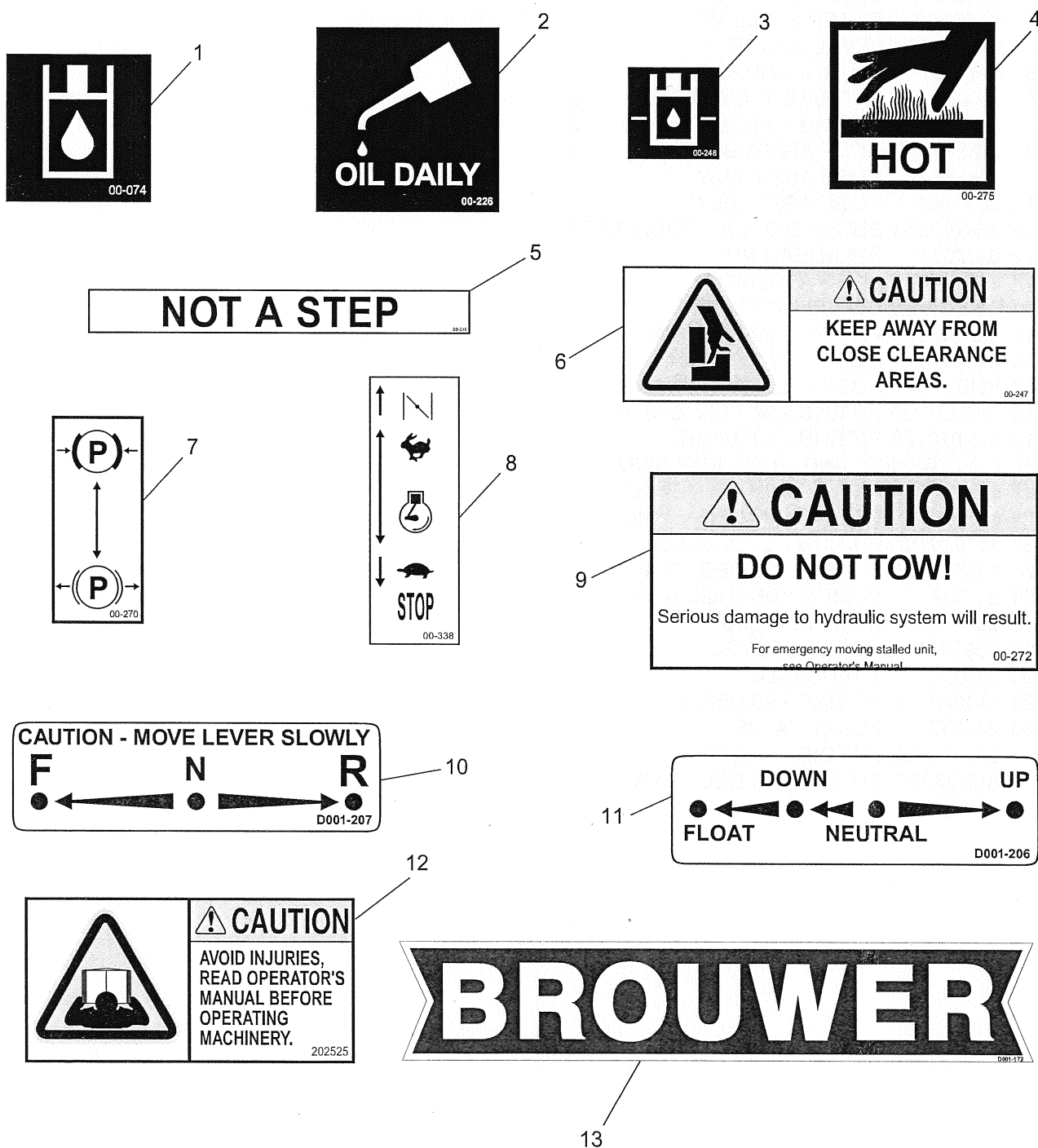
# ROLLMATE SOD LAYER

## HYDRAULIC ASSEMBLY

FIGURE 9

ITEM	PART NO.	DESCRIPTION	QTY	ITEM	PART NO.	DESCRIPTION	QTY
10-1	4160380	HYDRAULIC TANK	1				
10-2	KH20177	CA. HYDRAULIC TANK	1				
10-3	4160652	FILTER ELEMENT	1				
10-4	KH10002	LEVEL GAUGE	1				
10-5	KH00017	PLUG. MAGNETIC	1				
10-6	23-070	HYDRAULIC CYLINDER	2				
10-7	6-6-070302	FITTING - 90 DEG.	2				
10-8	20-217	HOSE ASSEMBLY	2				
10-9	20-146	HOSE ASSEMBLY	1				
10-10	2692301-1	HOSE ASSEMBLY	1				
10-11	6-6-6-070958	BULKHEAD RUN UNION TEE	2				
10-12	6-070117	BULKHEAD NUT	2				
10-13	2692301-1	HOSE ASSEMBLY	1				
10-14	8-8-8-070428	SWIVEL UNION TEE	1				
10-15	8-8-070221	FITTING - 90 DEG. SWIVEL	1				
10-16	4160757	HOSE - 1/2 IN. X 24 IN.	2				
10-17	KH01114	HOSE END. SWIVEL BARB	4				
10-18	8-12-070220	FITTING - 90 DEG. SWIVEL	2				
10-19	6-6-070120	FITTING - STRAIGHT	2				
10-20	6-6-070221	FITTING - 3/8 90 DEG. SWIVEL	1				
10-21	6-6-070220	FITTING - 90 DEG. SWIVEL	2				
10-22	8-10-070220	FITTING - 90 DEG. SWIVEL	2				
10-23	10-10-071520	FITTING - 90 DEG. LONG	1				
10-24	6-8-070220	FITTING - 90 DEG. SWIVEL	1				
10-25	21-097	PUMP-HYDRAULIC GEAR	1				
10-26	20-142	HOSE ASSEMBLY	1				
10-27	2692403-1	HOSE ASSEMBLY	2				
10-28	51-038	TRANSAXLE	1				
10-29	10-10-071620	FITTING - 90 DEG. LONG	1				
10-30	23-137	FLOAT VALVE	1				
10-31	6-6-070320	FITTING - 45 DEG.	2				
10-32	8-6-07220	FITTING - 90 DEG. SWIVEL	1				

FIGURE 10



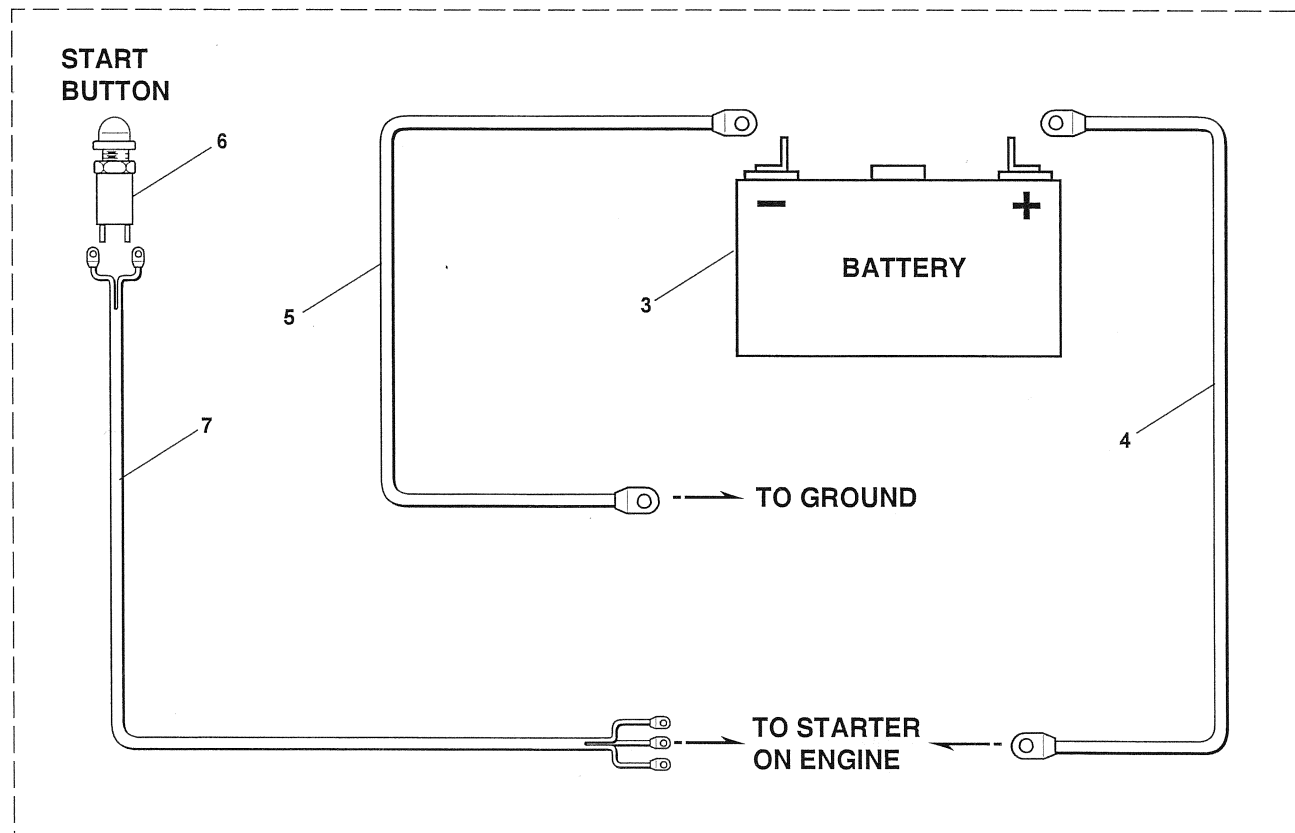
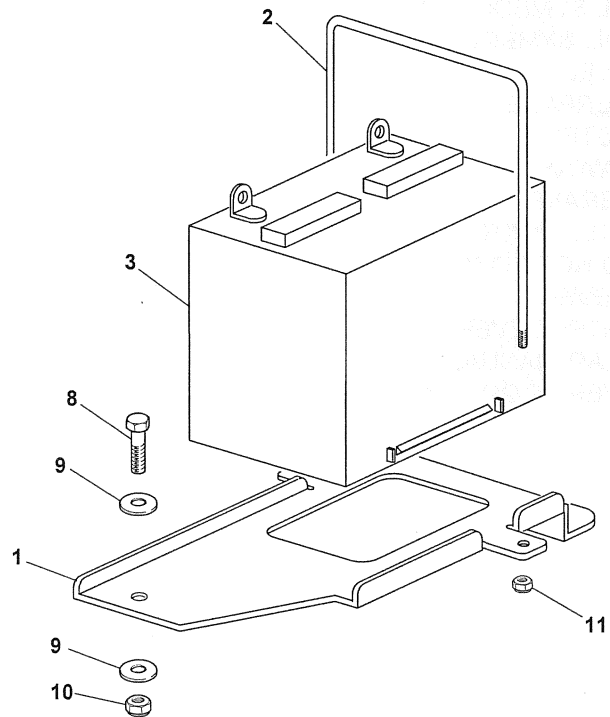
# ROLLMATE SOD LAYER

## DECALS

FIGURE 10

ITEM	PART NO.	DESCRIPTION	QTY	ITEM	PART NO.	DESCRIPTION	QTY
10-1	00-074	DECAL-HYD OIL SYMBOL	1				
10-2	00-226	DECAL-LUBE OIL SYMBOL	2				
10-3	00-248	DECAL, OIL LEVEL	1				
10-4	00-275	DECAL, HOT SURFACE	1				
10-5	00-246	DECAL-NOT A STEP	2				
10-6	00-247	DECAL, KEEP AWAY	2				
10-7	00-270	DECAL, PARK BRAKE	1				
10-8	00-338	DECAL-THROTTLE W/CHK	1				
10-9	00-272	DECAL-CTN DO NOT TOW	1				
10-10	D001-207	DECAL-F/N/R LEVER	1				
10-11	D001-206	DECAL-HYD CNTRL LEVER	1				
10-12	202525	DECAL-CTN READ MANUAL	1				
10-13	D001-172	DECAL-BROUWER LOGO	1				

FIGURE 11



# ROLLMATE SOD LAYER

## ELECTRICAL SYSTEM

FIGURE 11

ITEM	PART NO.	DESCRIPTION	QTY	ITEM	PART NO.	DESCRIPTION	QTY
11-1	4160693	BATTERY TRAY	1				
11-2	4160694	U-BOLT - BATTERY	1				
11-3	KE10218	BATTERY	1				
11-4	4160819	BATTERY CABLE 28 IN.	1				
11-5	4160820	BATTERY CABLE 20 IN.	1				
11-6	KE10021	START BUTTON	1				
11-7	4160756	HARNESS ASSEMBLY	1				
11-8	F010530	BOLT 5/16 UNC X 3 GR.8	1				
11-9	F320500	FLATWASHER 5/16	2				
11-10	F210500	LOCKNUT 5/16 UNC	2				
11-11	F210400	LOCKNUT 1/4 UNC	1				
	* KE10233	RED TERM. PROTECTOR	1				
	* KE10234	BLACK TERM. PROTECTOR	1				

\* NOT ILLUSTRATED

**BROUWER TURF LTD.**

23324 Woodbine Avenue, Keswick, Ont. Canada L4P 3E9  
Tel. (905) 476-6222 • 888-341-5113 Fax. (905) 476-6744  
Web. [www.brouwerturf.com](http://www.brouwerturf.com) • E-mail. [info@kesmac.com](mailto:info@kesmac.com)