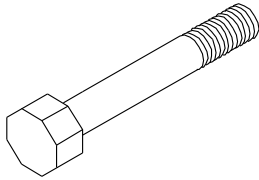


FASTENER INSTALLATION TORQUE

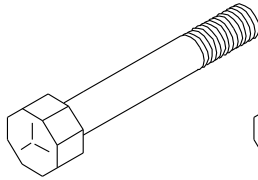
The chart below lists the proper installation torque for fasteners on Progressive Turf Equipment mowers. When bolts are to be tightened or replaced, refer to this chart to determine the proper torque (unless otherwise specified in this manual).

SAE Grade 5 fasteners are to be used in the assembly of this machine, unless otherwise specified in this manual.

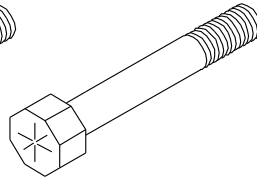
Bolt Grade Identification



SAE Grade 2
(No Dashes)



SAE Grade 5
(3 Dashes)



SAE Grade 8
(6 Dashes)

| Bolt Diameter | Recommended Torque in Foot Pounds (Newton-Meters) |
|---------------------|---|
| 5/16 UNC | 21 (28) |
| 3/8 UNC | 38 (52) |
| 7/16 UNC | 55 (75) |
| 1/2 UNC | 85 (115) |
| 9/16 UNC | 125 (170) |
| 5/8 UNC | 175 (240) |
| 3/4 UNC | 300 (410) |
| 7/8 UNC | 450 (610) |
| 1 UNC | 680 (925) |
| 1-14 LH Spindle Nut | 60 (82) |
| M12x1.5 (Note) | 55 (75) |
| Pro-EZ Change Bolt | 110 (150) |

NOTE: 4-Way gearbox mounting bolts are M12

BLADE SERVICING

WARNING!

Always observe proper lock-out procedures when performing any maintenance work including changing or servicing the blades. Always remove and retain the ignition switch key, ensure parking brake is engaged, and block and or support machine using equipment designed for the task.

Be sure deck safety locks are engaged when working on decks in the raised position.

Use gloves when handling mower blades. Blades can be very sharp.

Inspect blades before each use to determine that they are mounted tightly and are in good condition. Replace any blade that is bent, excessively nicked, worn or has any other damage. Small nicks can be ground out when sharpening.

WARNING!

Use only original equipment blades when replacing worn or damaged mower blades. They are made of special steel alloys and subjected to rigid heat-treat and inspection requirements. Substitute blades may not meet these specifications and **MAY BE DANGEROUS.**

BLADE SELECTION

We offer four blade styles for use with this mower:

Fixed high lift

Combined with Progressive's high tip speed, the fixed High-Lift blade 'stands' grass blades up for a clean cut, even in damp conditions or at high mowing speeds.

Fixed low lift

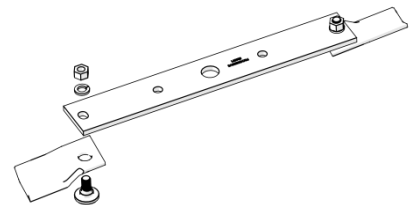
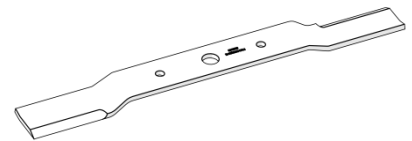
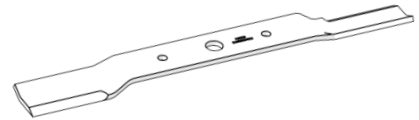
Developing less lift than the High-Lift blade, Progressive's Low-Lift fixed blade is ideal for both new growth or sandy soils where abrasion is a concern but superior cut quality can never be sacrificed. Also requires less tractor horse-power.

Pro-EZ Change System (Available in high or low lift)

Developed with turf professionals in mind:

- Economical as only the tips are changed
- Flat profile fastener extends life, reduces cost
- Standard hand-tools are used for reduced cost and easy change out
- Lower start-up torque requirement reduces stress on the complete drive train
- Thinner profile than a standard blade means the tips retain their sharpness after the equivalent number of mowing hours

Pro-Ez Change Blade System installs on the same blade support bar as a fixed blade. This allows users to easily swap blade types as growing conditions or mowing requirements change.



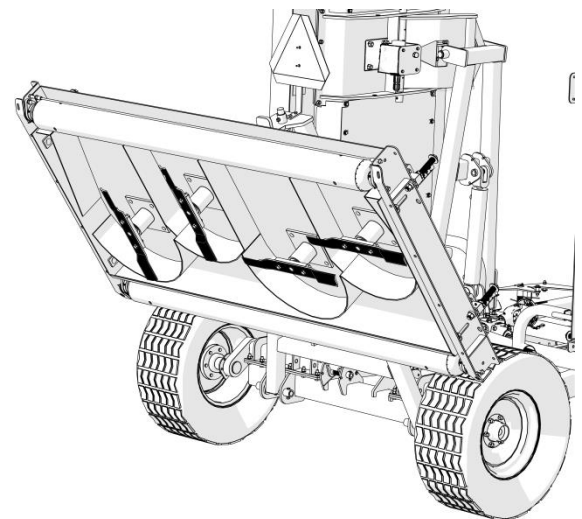
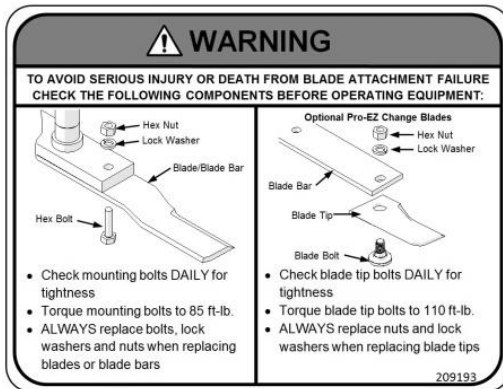
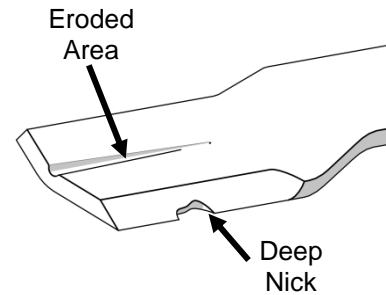
FIXED BLADE REMOVAL AND INSTALLATION

A 1" diameter pilot centers the blade on the spindle with two 1/2" grade 5 fasteners. When changing blades, be sure that pilot is properly seated in the blade and the blade lies flat on the spindle bar.

Always replace bolts, lock washers and nuts when replacing blades. Tighten bolts to proper torque as listed on Page 44.

Replace any blade that is bent, nicked deeper than 1/4", excessively worn or has any other damage. Small nicks can be ground out during sharpening. Always balance blades before use.

In abrasive soil conditions, monitor condition of the blade wing. If erosion of the steel is evident at the base of the wing, replace blade.



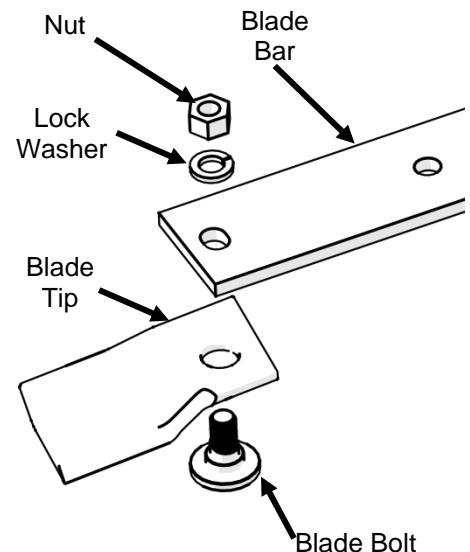
Pro-EZ CHANGE BLADE REMOVAL AND INSTALLATION

Blade Bar

A 1" diameter pilot centers the blade bar on the spindle with two 1/2" grade 5 fasteners. When changing blades, be sure that pilot is properly seated in the blade bar and the blade bar lies flat on the spindle.

Always replace bolts, lock washers and nuts when replacing blade bars. Tighten bolts to proper torque as listed on Page 44.

Replace any blade bar that is bent, worn or has any other damage.



Blade Tip

The Pro-EZ change blade tips are serviceable with a single wrench. An anti-rotation slot engaging the blade bolt to the blade bar allows for installation and removal of the nut from one side without having to hold the bolt.

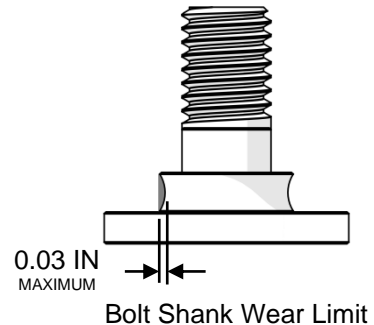
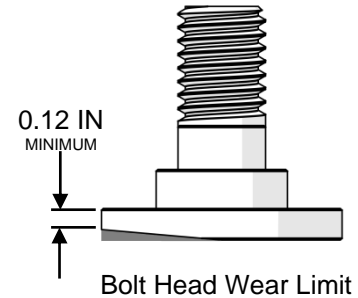
When removing blade tips, inspect the tips and blade bolts for wear and damage.

Replace any tip that is bent, nicked deeper than $\frac{1}{4}$ ", excessively worn or has any other damage. Small nicks can be ground out during sharpening. Always balance Pro-EZ blades as an assembled unit.

Replace any blade bolts that have the head or blade shank worn beyond the limits shown in the accompanying illustrations.

Always install new blade bolts, lock washers and nuts when installing new blade tips. Tighten bolts to proper torque as listed on Page 44. **DO NOT OPERATE WITH ONLY ONE BLADE TIP INSTALLED.**

Grass build-up between the tip and blade bar may prevent the tip from pivoting properly at start-up or during mowing. Ensure all tips are free to rotate prior to operation.



BLADE SHARPENING



Use gloves when handling mower blades. Blades can be very sharp.

When sharpening blades, be sure material removed is equal on both sides of the blade. Unbalanced blades will cause excessive vibration leading to cracks in machine components.

- Clean all material from the blade prior to sharpening and balancing.
- Grind or file blades following original pattern as shown.
- Sharpen to a razor edge. Do not sharpen back side of blade.

Use the supplied cone balancer (pn 209000) to verify blade balance. When the blade is correctly balanced, the blade will remain horizontal.



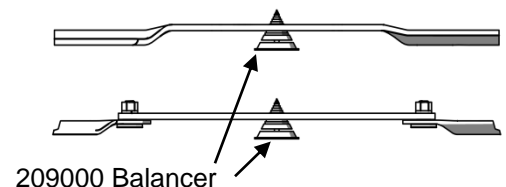
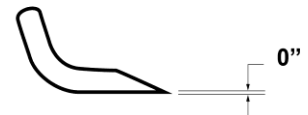
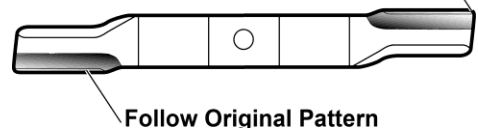
Failure to properly balance blades after sharpening can cause vibration leading to premature component damage. Pro-EZ Change blades must be balanced as a complete assembly (blade bar, blade tips & blade tip hardware).



Wear appropriate eye and face protection when sharpening blades.



Maintain Corners



SPINDLE SERVICE

Each spindle is supported by two ball bearings. No adjustment of clearance is required. Running clearance is pre-set during assembly by tightening the 1" NF left hand nut on top of the pulley.

Periodically inspect blade spindles by grasping pulley, and moving from side to side. If any free play is noted, replace or repair.

SPINDLE ASSEMBLY REMOVAL

- 1) With the mower decks in the transport position, remove the blade.
- 2) Lower decks to mowing position.
- 3) Relieve belt tension and remove belt from the spindle pulley.
- 4) Place a piece of cardboard or other soft material on the ground beneath the spindle to be removed.
- 5) From above the deck, loosen & remove the four nuts that hold the spindle assembly to the deck. The spindle assembly will drop on to the ground.
- 6) Remove the complete spindle assembly from beneath the deck.

SPINDLE ASSEMBLY INSTALLATION

Reverse above procedure. Be sure spindle mounting area of deck is clean of any foreign material before attaching spindle assembly.



Never direct high pressure water spray at the blade spindles (top or bottom). Water may enter the bearings, compromising and lead to premature failure.



SPINDLE ASSEMBLY REPAIR

Note: A video showing this rebuild procedure is available on our website: <http://www.progressiveturfequip.com/service>

CAUTION!

Spindle repair requires special skills and tools, a shop press is required. If your shop is not properly equipped or your mechanics are not properly trained in this type of repair, complete spindle assemblies are available as service parts.

- 1) Remove LH Nut (1), lock washer (2), pulley (3), cap (4), shim (5) and key (11) from spindle assembly. **The spindle nut is left-hand thread.**

CAUTION!

Make sure that the press ram and bed 100% square to each other. If bearings are not square in housing, bearings will wear out prematurely.

- 2) Place assembly in shop press with support under spindle housing flange and press spindle down through housing.
- 3) Remove bottom bearing from spindle and top bearing from housing

IMPORTANT! Removing bearings from spindle / housing causes permanent damage to the bearings. New bearing must be used in re-assembling the spindle.

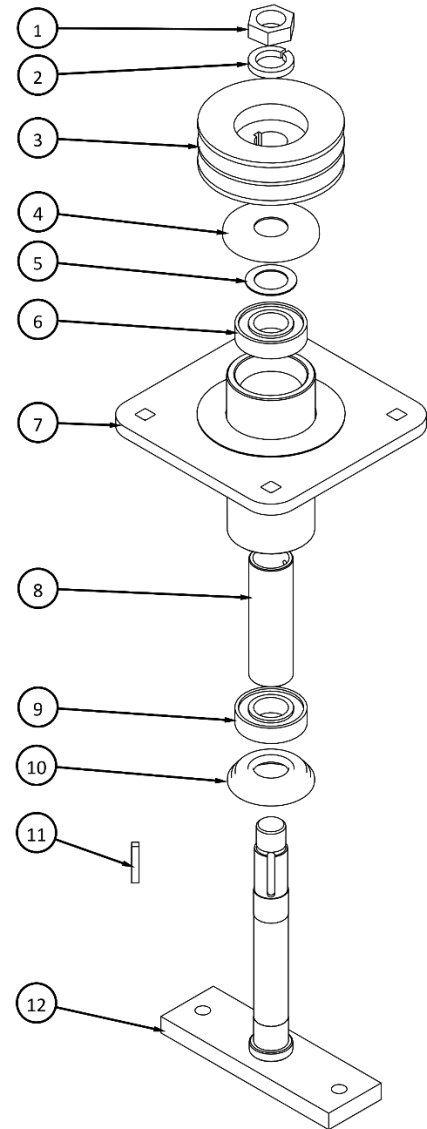
- 4) Inspect spacer tube (8) spacer for wear. If any wear is present, replace spacer tube with new.

IMPORTANT! Failure to replace a worn or damaged spacer tube will lead to premature top bearing wear.

- 5) Place housing (7) in press (upside down). **Pressing on outer race**; install bottom bearing (9) into housing.
- 6) Place spindle (12) in press. Place bottom shield (10) on spindle.
- 7) **Pressing on inner race** of bottom bearing, press housing / bearing on to spindle. A steel tube will be required to slide over the spindle and press on inner race.
- 8) Install bearing spacer (8) with hole end up.
- 9) Set top bearing (6) on to spindle. **Pressing on inner race**, press top bearing on to spindle (may be a loose fit in housing).
- 10) Install shim washer (5), cap (4), key (11) and pulley (3) on to spindle.
- 11) Install lock washer (2) and nut (1) and torque to 60 ft-lb.

Rotate the housing six revolutions by hand to check for free movement.

The assembly is now ready for installation into the mower deck.



HYDRAULICS

WARNING!

Do not use your hand to check for hydraulic oil leaks. Use a piece of cardboard instead.

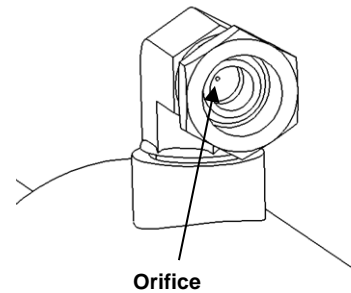
Hydraulic fluid escaping under pressure can penetrate the skin causing serious injury. If skin penetration occurs, seek medical attention immediately.

Relieve all pressure from hydraulic system before disconnecting hoses.

During your daily inspection repair all leaks before they create a major problem. Relieve all pressure before working on, or disconnecting the line in the hydraulic system.

The hydraulic system on the TDR-30 mower is a simple cylinder system used to raise and lower the cutting decks into position. Each cylinder is equipped with a .032 diameter restrictor orifice in the rod-end elbow adapter to throttle the speed of travel.

When reconnecting to the tractor, be sure that both connector ends are clean. Dirt in the hydraulic system can block the orifice in the line throttle valve or cause premature wear & failure of hydraulic components on the mower or tractor.



SUPPORTING MACHINE FOR SERVICE

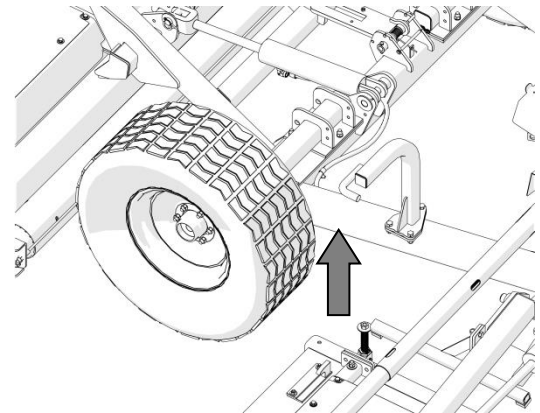
(2) Points are available to lift the mower off of the ground for servicing the transport tires / wheels / bearings at the main frame rail just in front of the transport tires (as shown in the accompanying illustration.) Use a bottle or service jack to raise the wheel from the ground and place a jack stand, wooden block or other suitable support under the rectangular tube.

WARNING!

Do not support the machine on cinder blocks, hollow tiles or other members that may fail under continuous load.

Never perform service on a machine that is supported solely by a jack. Always ensure proper blocking is placed to support load during service.

If the transport tires must be changed with the wings in the raised position, ensure the machine is on a flat, level surface and the wing locks are fully engaged before attempting to lift the machine.

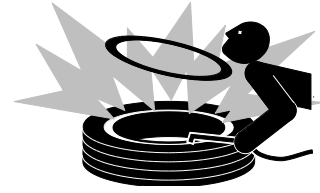


TRANSPORT TIRES

Inspect tires daily for wear or damage. Check tire pressures weekly with an accurate pressure gauge. Do not inflate tires beyond 35 psi.

WARNING!

Mounting and dismounting tires from rims can be dangerous and should be performed by trained personnel using correct tools, equipment and procedures.



LONG-TERM STORAGE

If the mower is not to be used for an extended period of time (4 months or longer) it is recommended that the following maintenance steps are followed:

- 1) Thoroughly wash mower, removing all grass clipping residue from deck undersides & mower framework. Ensure deck drain holes are free from debris.
- 2) Add grease to all grease points.
- 3) Check gearbox oil for proper level.
- 4) Relieve tension on all V-belts.
- 5) Inspect all drive belts & pulleys.
- 6) Inspect all blade spindle bearings for excessive play and smooth operation.
- 7) Inspect all blades for serviceable condition.

When returning the mower to service after long-term storage:

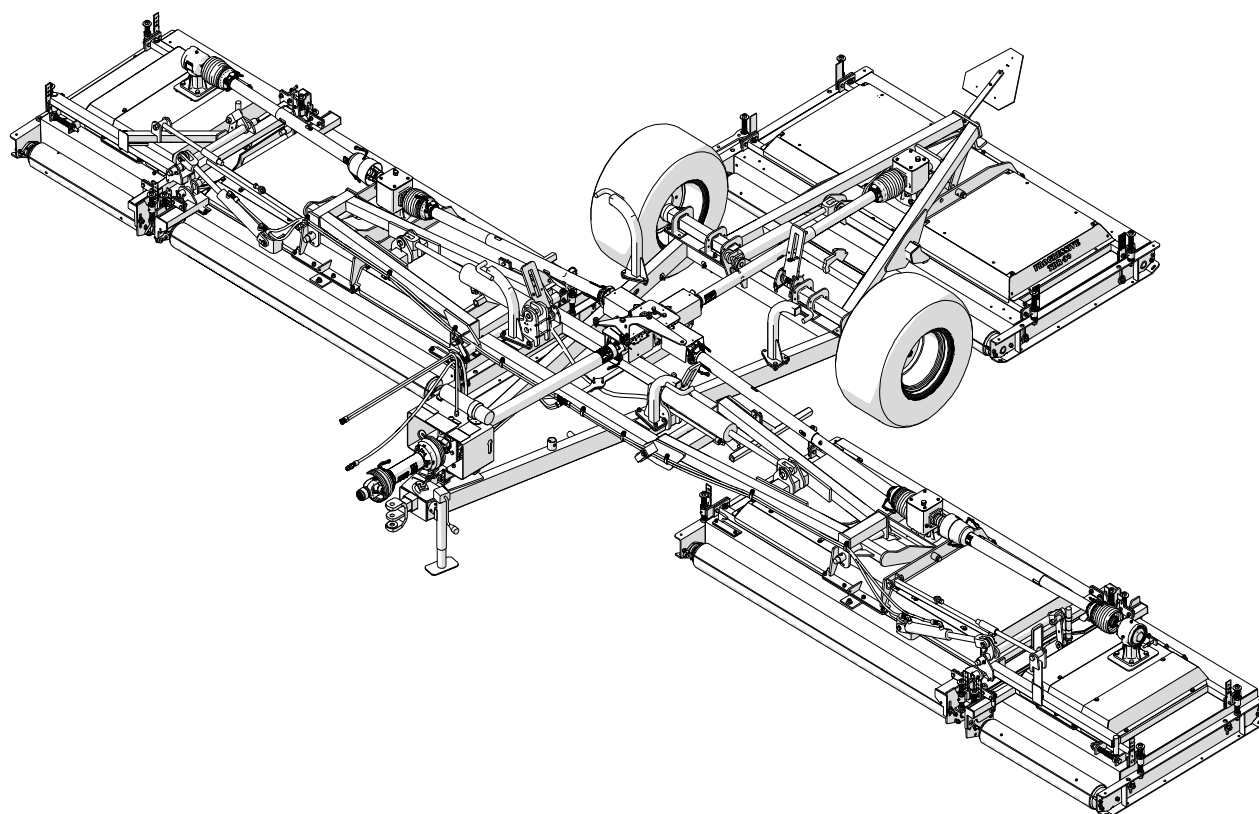
- 1) Check tightness of all blade fasteners.
- 2) Add grease to all grease points.
- 3) Set tension on all V-belts.
- 4) Ensure all pivot points move freely.
- 5) Change gearbox oil.

TROUBLESHOOTING

| PROBLEM | CAUSE | REMEDY |
|---|--|---|
| Uneven Cutting | Improper Height Setting | Ensure that cutting height is set properly at all 4 corners of each deck (Page 36) |
| | Damaged Blades | Inspect blades for damage, replace as required |
| Belt slippage / Squeal | Lack of tension | Inspect & adjust tension as required (Page 43) |
| | Over Loading | Increase cutting height or reduce ground speed |
| Rapid belt wear | Belt slippage | See Above |
| | Belt not aligned properly | Check belt alignment. Ensure belts are running in proper groove on pulley. |
| | Over heating | Ensure decks are free from clipping build-up |
| Over-heated bearings | Belt slippage | See Above |
| | Insufficient Cooling | Ensure decks are free from clipping build-up |
| Premature spindle bearing failure | Over-heating | See Above |
| | Improper rebuild procedure | See specific instructions in manual (Page 48) |
| | Improper bearings | Use only OEM bearings |
| | Water Ingress | -Avoid direct spray on bearing during washing -Ensure drain holes on decks are not clogged |
| Deck safety locks will not engage | Wing not raising fully to release lock | Decrease center distance (retracted length) of cylinder with adjustable clevis on cylinder rod |
| | Binding in lock mechanism | Check all lock pivots to ensure free operation. Clean and lubricate as required. |
| Mower Deck will not lower. | Orifice in cylinder plugged | Remove orifice and remove obstruction and reassemble (Page 50) |
| Vibration on turning | Drawbar length incorrect. | Adjust drawbar to specification (see Page 28) |
| Damaged intermediate bearing or tractor PTO shaft | Input shaft does not collapse easily under power | Remove input shaft, pull apart and deburr / grease splines (Page 39) Grease at proper interval |

Parts Manual

TDR-30



TDR 30

Effective serial number: 13301004 and up.

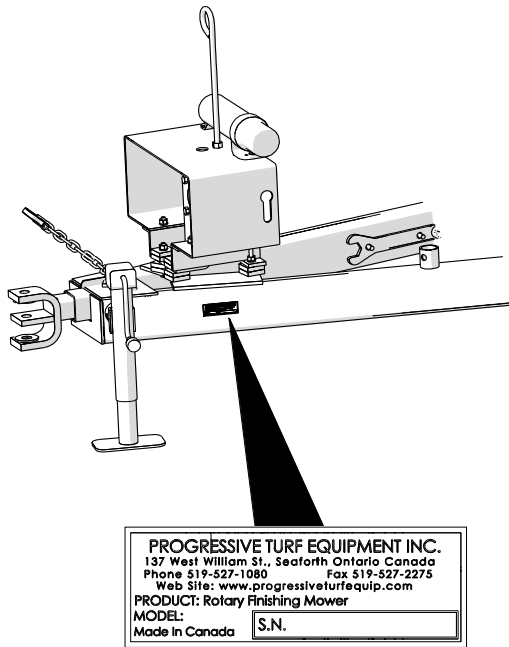
January 2021

P.N. 120537



DANGER!

Si No Lee Ingles, Pida Ayuda a Alguien Que Se Lo Lea
Para Que le Traduzca Las Medidas de Seguridad



Serial Number Location

The serial number plate for the machine is located on the left side of the main frame tube at the front

For quick reference, record the following information:

Model: _____

Serial Number: _____

Date purchased: _____

Always state this information when contacting your selling dealer and when ordering spare parts.

Parts Information

Use only Genuine Original Equipment Manufacturers (O.E.M.) replacement parts. The use of "will fit" parts may reduce machine performance, void machine warranties and present a safety hazard. Use Genuine OEM parts.

Progressive Turf Equipment Inc.

137 West William Street
Seaforth, Ontario
Canada
N0K 1W0

Phone: 800-668-8873

Fax: 519-527-2275

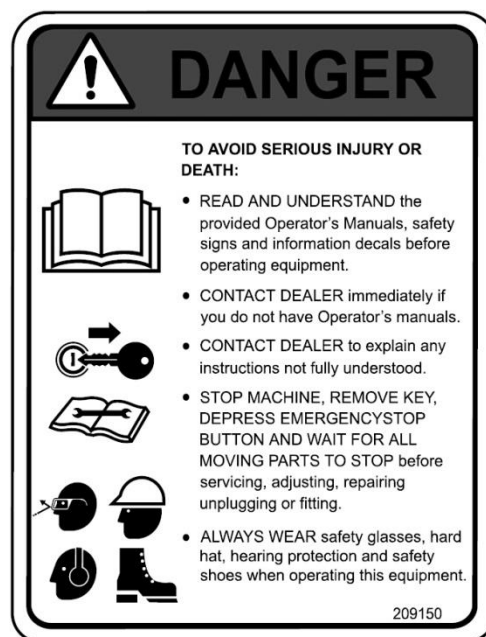
www.progressiveturfequip.com

Maintenance

Maintenance should always be performed by a qualified service technician familiar with servicing similar equipment, using good safety and workmanship practices.

Always observe proper lock-out procedures when performing any maintenance work. Other than maintaining the blade spindles or blades, always lower all decks before performing maintenance. Block and or support machine using equipment designed for the task. When maintaining blades or spindles, always ensure locks are seated correctly in place. When performing hydraulic maintenance, ensure that pressure has been released.

It is imperative that the operator or qualified service technician reads and understands all the safety information in the Operator's Manual before proceeding. Failure to follow the instructions or heed the warnings could result in injury or death. **Proper care is your responsibility.**



PARTS ORDERING GUIDE

The following instructions are offered to help eliminate needless delay and error in processing purchase orders for the equipment in this manual.

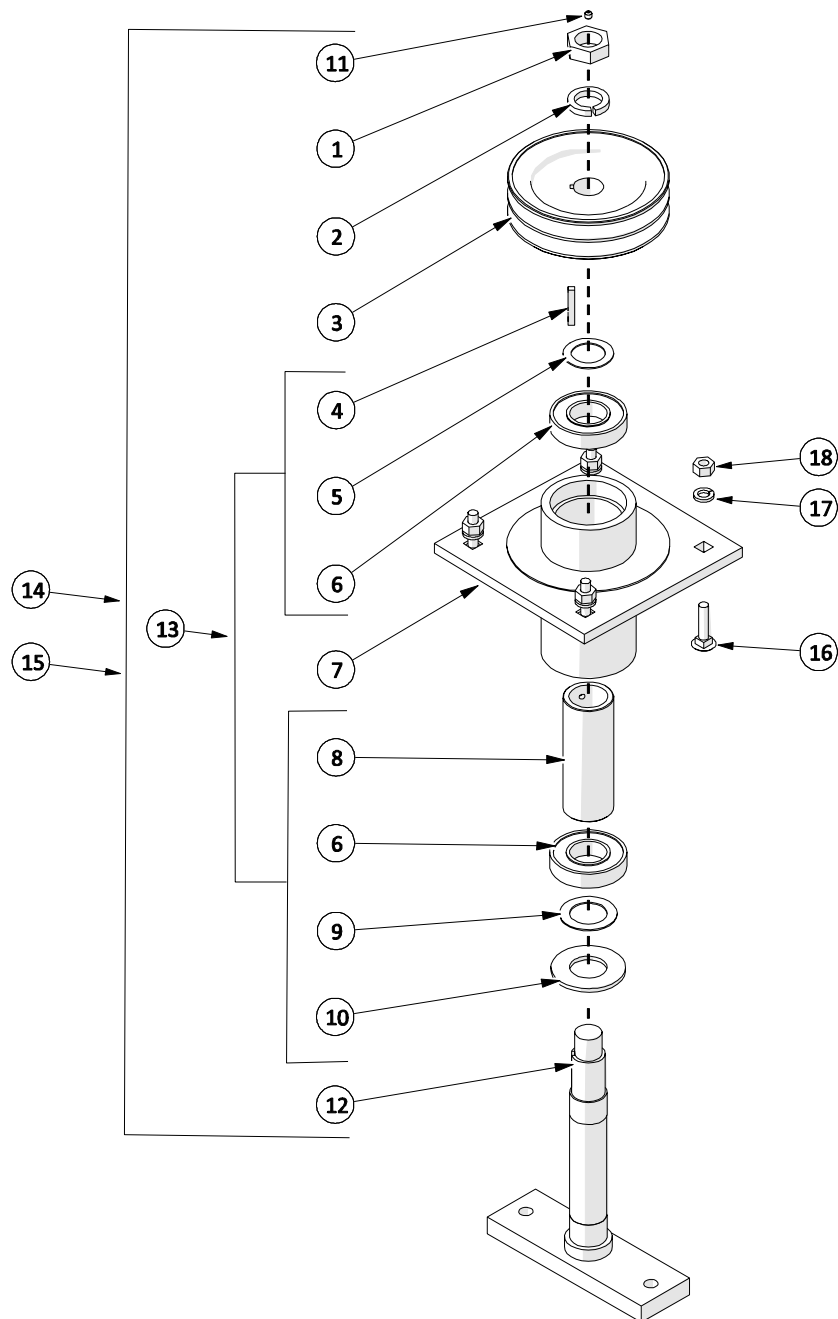
1. The Parts Section is prepared in logical sequence and grouping of parts that belong to the basic machine featured in this manual. Part Numbers and Descriptions are given to help locate the parts and quantities required.
2. The Purchase Order must indicate the Name and Address of the person or organization ordering the parts, who should be charged, and if possible the serial number of the machine for which the parts are being ordered.
3. The purchase order must clearly list the quantity of each part, the complete and correct part number, and the basic name of the part.
4. The manufacturer reserves the right to substitute parts where applicable.
5. Some parts may be unlisted items which are special production items not normally stocked and are subject to special handling. Request a quotation for such parts before sending purchase order.
6. The manufacturer reserves the right to change prices without notice.

Table of Contents

| | |
|---|-----------|
| SERIAL NUMBER LOCATION..... | II |
| 1 DECK ASSEMBLY | 6 |
| 1.1 BLADE SPINDLE ASSEMBLY UP TO SERIAL NO. 19301073 | 6 |
| 1.2 BLADE SPINDLE ASSEMBLY SERIAL NO. 21301074 AND UP | 7 |
| 1.3 BLADE OPTIONS | 8 |
| 1.4 WING DECK GEARBOX ASSEMBLY | 9 |
| 1.5 OUTER WING DECK GEARBOX ASSEMBLY | 10 |
| 1.6 REAR DECK GEARBOX ASSEMBLY | 11 |
| 1.7 WING DECK ASSEMBLY – L.H. | 12 |
| 1.8 WING DECK ASSEMBLY – R.H. | 13 |
| 1.9 WING DECK GUARDING | 14 |
| 1.10 OUTER WING DECK ASSEMBLY | 15 |
| 1.11 OUTER WING DECK GUARDING | 16 |
| 1.12 WING DECK HEIGHT ADJUSTMENT | 17 |
| 1.13 REAR DECK ASSEMBLY | 18 |
| 1.14 BELT DRIVE ASSEMBLY – WING | 19 |
| 1.15 BELT DRIVE ASSEMBLY – REAR | 20 |
| 1.16 WING DECK ROLLERS & BEARINGS..... | 21 |
| 1.17 REAR DECK ROLLERS & BEARINGS..... | 22 |
| 2 FRAME ASSEMBLY | 23 |
| 2.1 FRAME ASSEMBLY | 23 |
| 2.2 WING LIFT ASSEMBLY | 24 |
| 2.3 OUTER WING FRAME ASSEMBLY – LH | 25 |
| 2.4 OUTER WING FRAME ASSEMBLY – RH | 26 |
| 2.5 OUTER WING LIFT ASSEMBLY – LH & RH | 27 |
| 2.6 REAR LIFT ASSEMBLY | 28 |
| 2.7 WHEEL ASSEMBLIES | 29 |
| 3 HYDRAULICS | 30 |
| 3.1 HYDRAULICS – UP TO SERIAL #14301008 | 30 |
| 3.2 HYDRAULICS – SERIAL #15301009 & UP | 31 |
| 4 DRIVELINE..... | 32 |
| 4.1 DRIVELINE | 32 |
| 4.2 INPUT PTO SHAFT | 33 |
| 4.3 INTERMEDIATE PTO SHAFT..... | 34 |
| 4.4 WING DECK PTO SHAFT | 35 |
| 4.5 OUTER WING DECK PTO SHAFT | 36 |
| 4.6 WING DECK GEARBOX | 37 |
| 4.7 OUTER WING DECK GEARBOX..... | 38 |
| 4.8 REAR DECK GEARBOX | 39 |
| 4.9 4 WAY GEARBOX..... | 40 |
| 5 DECALS | 41 |
| 5.1 SAFETY | 41 |

1 DECK ASSEMBLY

1.1 Blade Spindle Assembly up to Serial No. 19301073

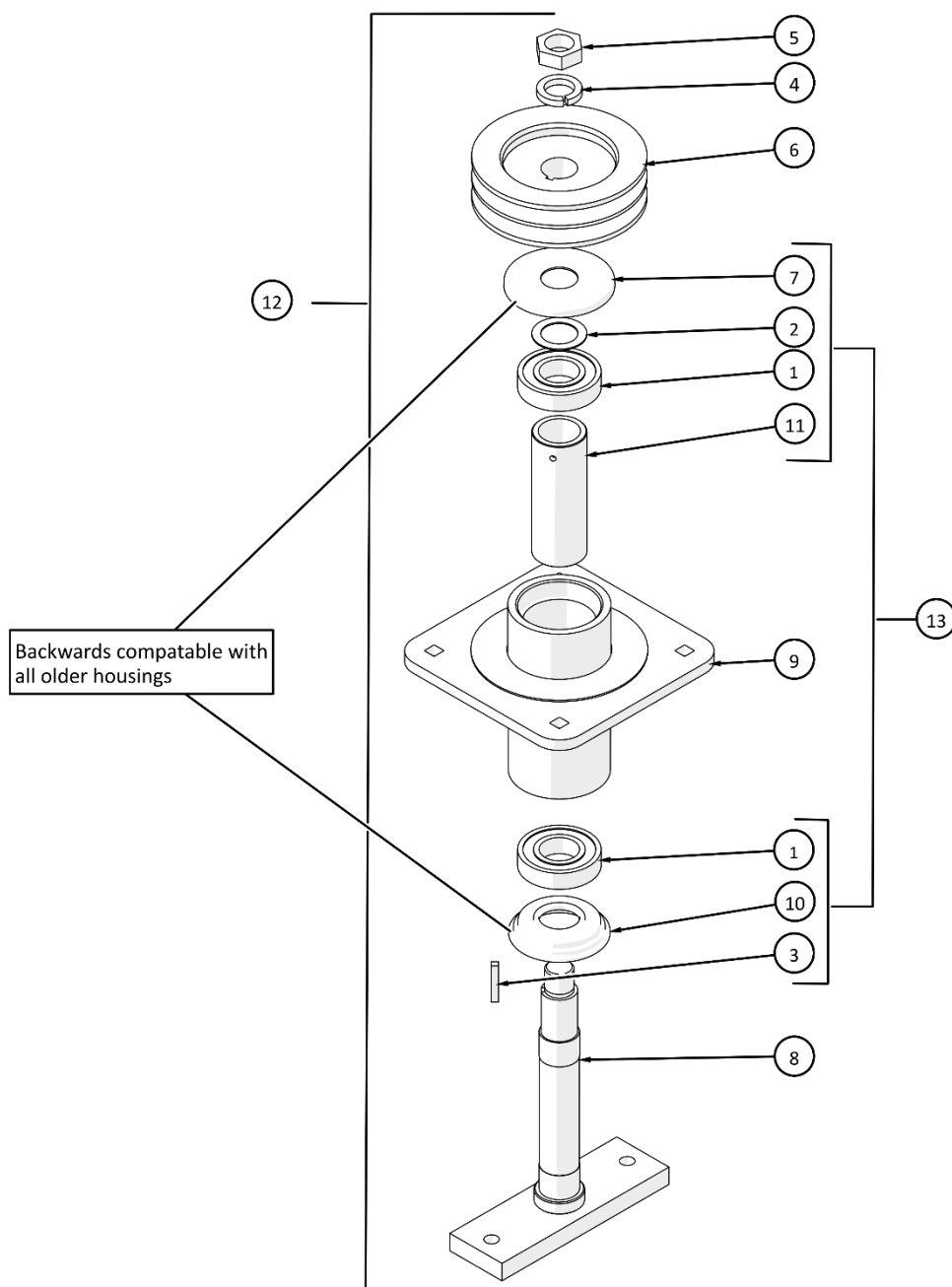


| ITEM | PART # | DESCRIPTION | QTY |
|------|--------|--------------------------|-----|
| 1 | 521003 | HEX NUT- L.H. | 1 |
| 2 | 521002 | LOCK WASHER L.H., (3PCS) | 1 |
| 3 | 521775 | PULLEY - 5.9" | 1 |
| 4 | - | SPINDLE KEY | 1 |
| 5 | - | SHIM WASHER | 1 |
| 6 | - | BEARING | 2 |
| 7 | 526092 | SPINDLE HOUSING | 1 |
| 8 | - | BEARING SPACER TUBE | 1 |
| 9 | - | SHIM WASHER | 1 |
| 10 | - | DIRT SHIELD | 1 |

| ITEM | PART # | DESCRIPTION | QTY |
|------|--------|------------------------------------|-----|
| 11 | O.L. | SET SCREW - 1/4"-28 X 1/4" | 1 |
| 12 | 526098 | BLADE SPINDLE | 1 |
| 13 | 526980 | SPINDLE REBUILD KIT | 1 |
| 14 | 526748 | BLADE SPINDLE - COMPLETE | 1 |
| 15 | 526750 | BLADE SPINDLE - LESS PULLEY | 1 |
| 16 | O.L. | CARR. BOLT- 7/16" X 1.75 NC GR5 PL | 4 |
| 17 | O.L. | LOCK WASHER- 7/16" PL | 4 |
| 18 | O.L. | HEX NUT - 7/16"NC GR5 PL | 4 |

O.L. - OBTAIN LOCALLY

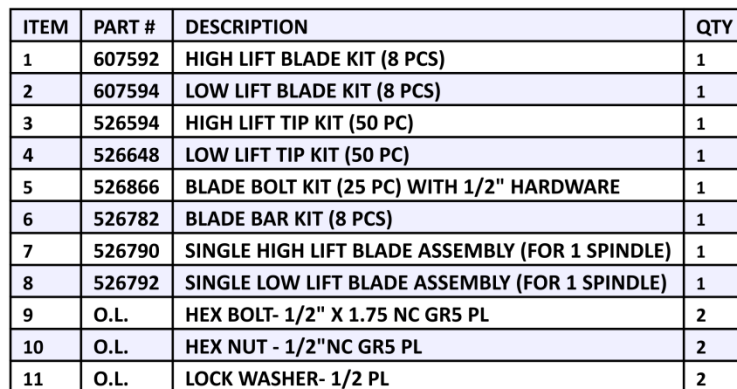
1.2 Blade Spindle Assembly Serial No. 21301074 and up



| ITEM | PART # | DESCRIPTION | QTY |
|------|--------|----------------------------|-----|
| 1 | 213052 | BEARING - MAINTENANCE FREE | 2 |
| 2 | 521004 | SHIM WASHER - 1.25 (9 PCS) | 1 |
| 3 | O.L. | KEY - 1/4" X 1.50" | 1 |
| 4 | 521002 | LOCKWASHER L.H. (3 PCS) | 1 |
| 5 | 521003 | HEX NUT- L.H. | 1 |
| 6 | 521790 | 5.9" PULLEY- 1-1/4" BORE | 1 |
| 7 | 522557 | SHIELD - SPINDLE TOP | 1 |

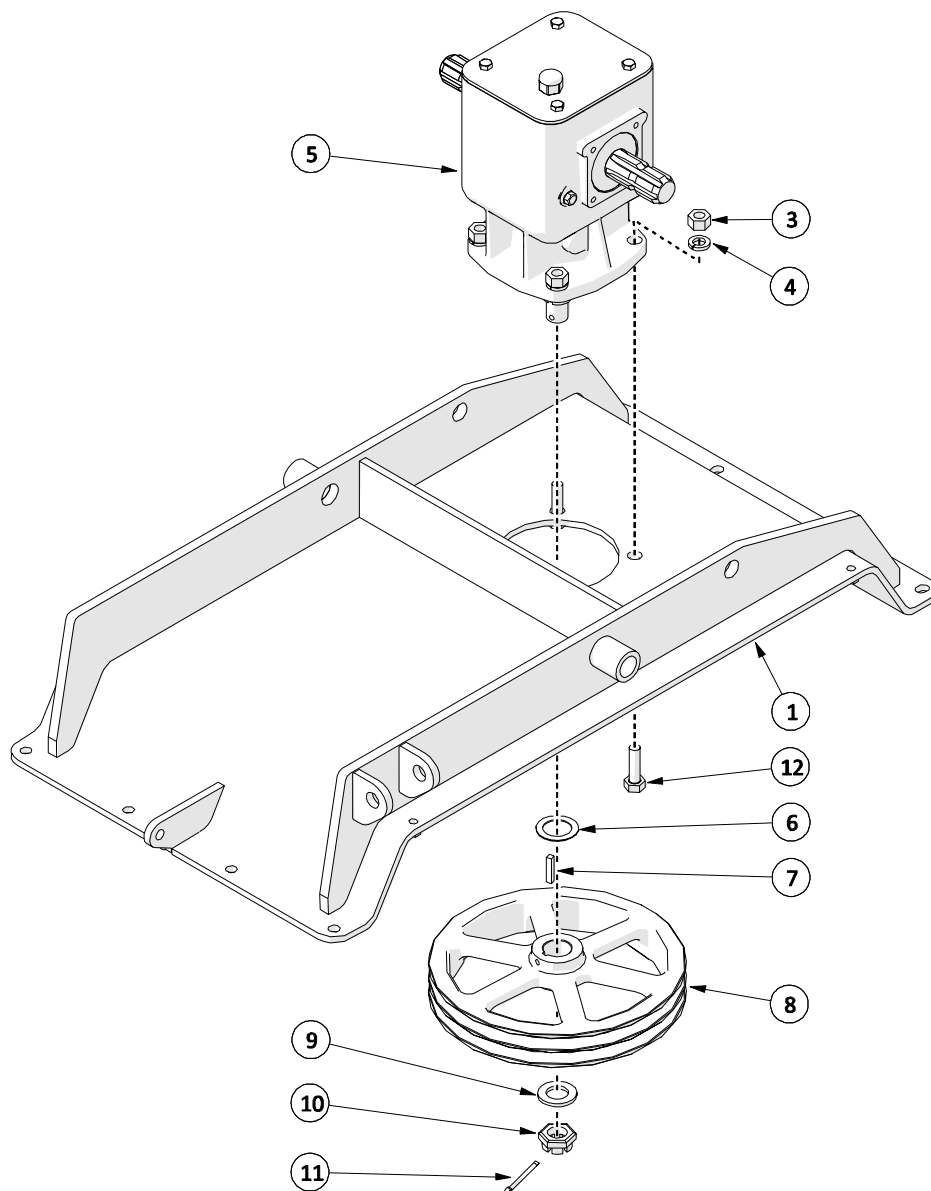
| ITEM | PART # | DESCRIPTION | QTY |
|------|--------|--------------------------------------|-----|
| 8 | 522586 | BLADE SPINDLE WELD- TDR-22 | 1 |
| 9 | 527552 | SPINDLE HOUSING - TDR-22 | 1 |
| 10 | 527550 | HOUSING BOTTOM CAP | 1 |
| 11 | 526096 | BEARING SPACER TUBE - TDR 22 | 1 |
| 12 | 527562 | BLADE SPINDLE ASSY COMPLETE - TDR-22 | 1 |
| 13 | 527563 | SPINDLE REBULD KIT MFREE TDR22 | 1 |

O.L. - OBTAIN LOCALLY



06/2017

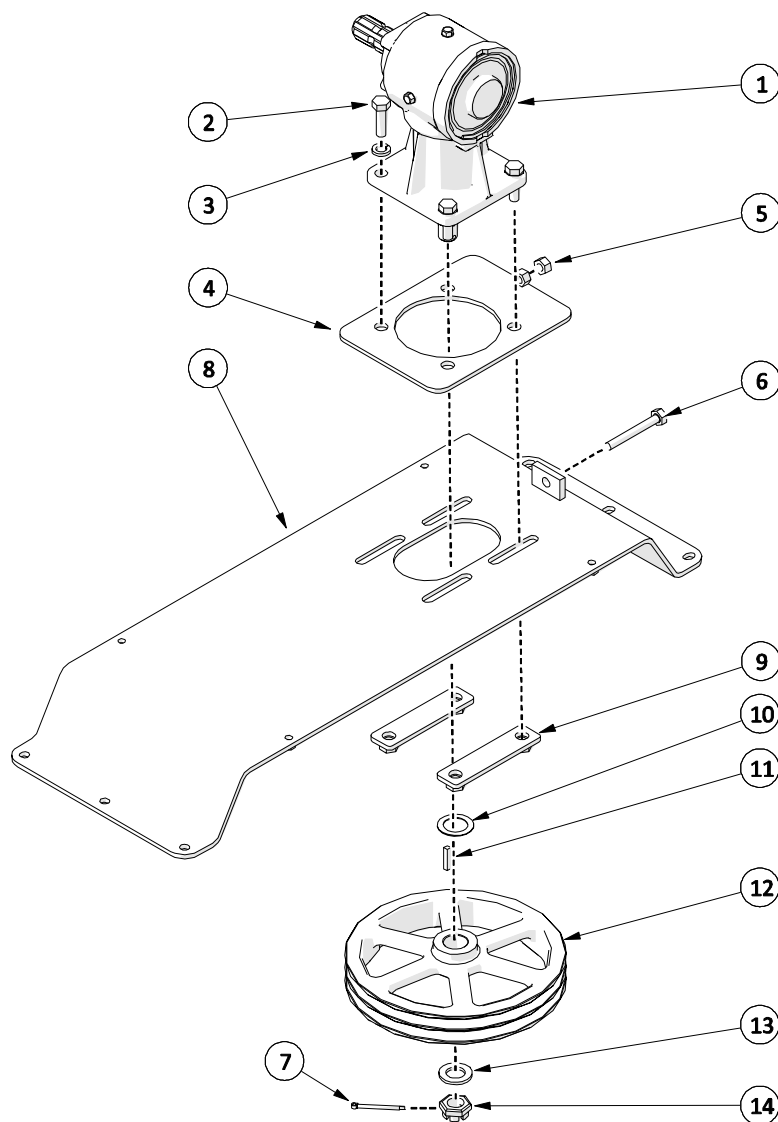
1.4 Wing Deck Gearbox Assembly



| ITEM | PART # | DESCRIPTION | QTY |
|------|--------|---------------------------------|-----|
| 1 | 607190 | GEARBOX MOUNT - LH WING (SHOWN) | 1 |
| 2 | 607214 | GEARBOX MOUNT - RH WING | 1 |
| 3 | O.L. | HEX NUT - 5/8" NC GR5 PL | 4 |
| 4 | O.L. | LOCKWASHER - 5/8" PL | 4 |
| 5 | 607290 | GEARBOX - DECK | 1 |
| 6 | 521004 | SHIM WASHER KIT (9 PCS) | 1 |
| 7 | 521390 | KEY KIT (3 PC) | 1 |
| 8 | 212021 | MAIN DRIVE PULLEY | 1 |
| 9 | 521129 | WASHER KIT (3 PCS) | 1 |
| 10 | 521130 | CASTLE NUT M24 | 1 |
| 11 | O.L. | COTTER PIN - 3/16" X 1.50 | 1 |
| 12 | O.L. | HEX BOLT- 5/8" X 1.75 NC GR5 PL | 4 |

O.L. - OBTAIN LOCALLY

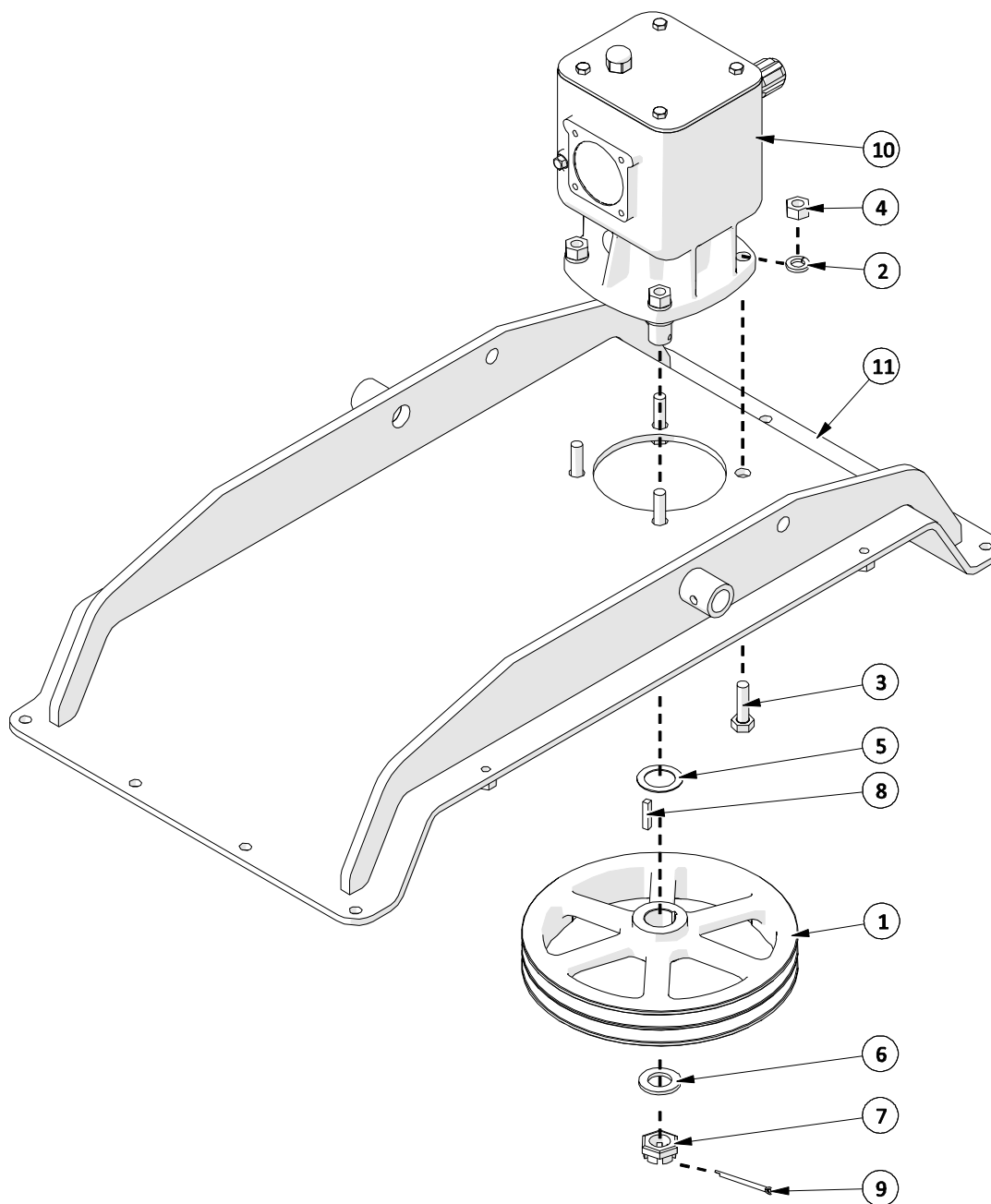
1.5 Outer Wing Deck Gearbox Assembly



| ITEM | PART # | DESCRIPTION | QTY |
|------|--------|-----------------------------------|-----|
| 1 | 521012 | GEARBOX - DECK | 1 |
| 2 | O.L. | HEX BOLT- 9/16" X 2.00 NC GR5 PL | 4 |
| 3 | O.L. | LOCKWASHER - 9/16" PL | 4 |
| 4 | 521013 | SLIDE PLATE | 1 |
| 5 | O.L. | HEX NUT - 1/2"NC GR5 PL | 1 |
| 6 | 521020 | TAP BOLT KIT (3 PCS) | 1 |
| 7 | O.L. | COTTER PIN - 3/16" X 1.50 | 1 |
| 8 | 607186 | GEARBOX MOUNT | 1 |
| 9 | 521018 | STIFFENER NUT BRACKET | 2 |
| 10 | 521004 | SHIM WASHER KIT (9 PCS) | 1 |
| 11 | 521390 | KEY KIT - 1/4" X 1.25" (3 PC KIT) | 1 |
| 12 | 212021 | OUTER WING DRIVE PULLEY | 1 |
| 13 | 521129 | WASHER KIT (3 PCS) | 1 |
| 14 | 521130 | CASTLE NUT M24 | 1 |

O.L. - OBTAIN LOCALLY

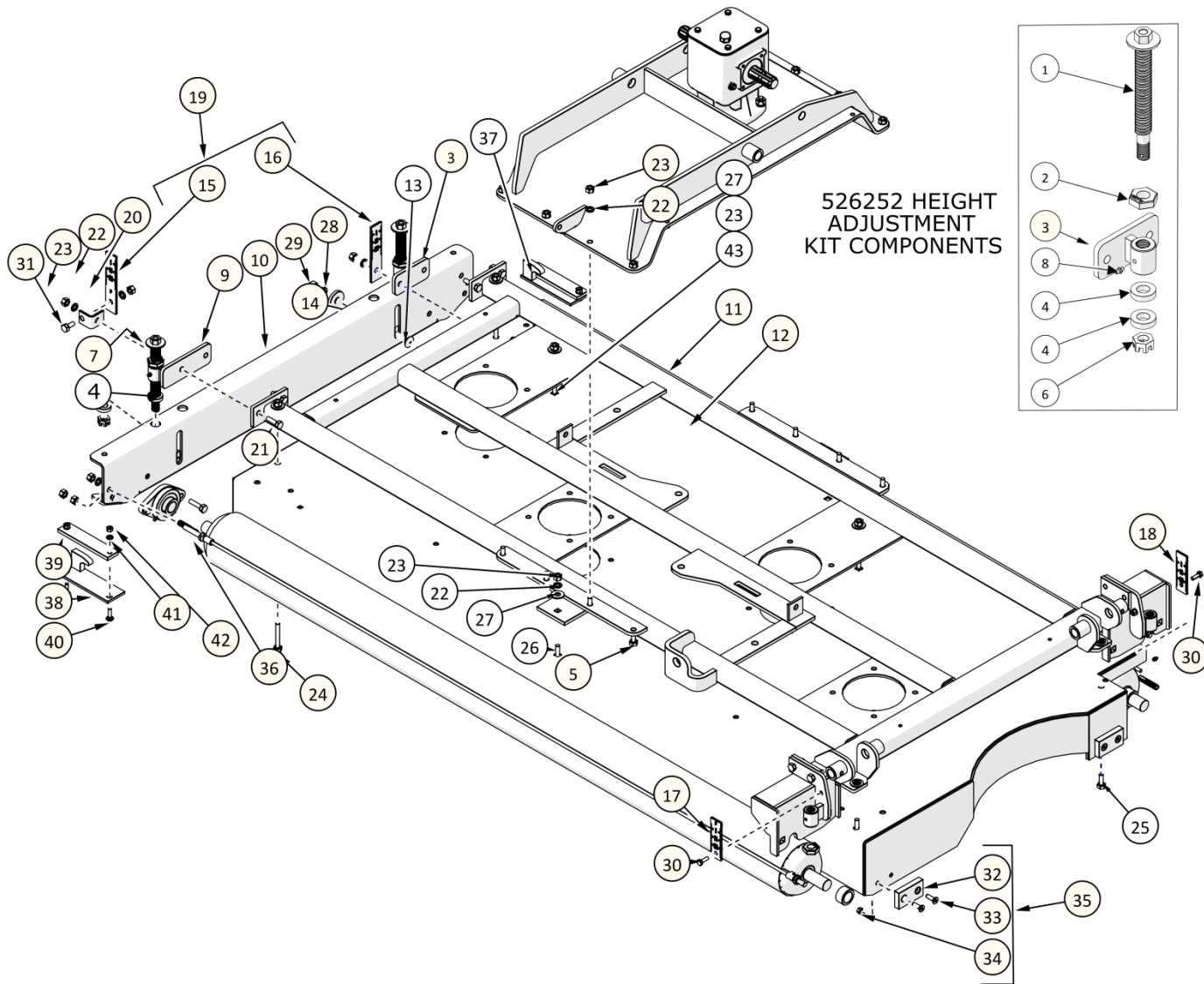
1.6 Rear Deck Gearbox Assembly



| ITEM | PART # | DESCRIPTION | QTY |
|------|--------|---------------------------------|-----|
| 1 | 212021 | PULLEY - 11-1/4" | 1 |
| 2 | O.L. | LOCK WASHER- 5/8" PL | 4 |
| 3 | O.L. | HEX BOLT- 5/8" X 1.75 NC GR5 PL | 4 |
| 4 | O.L. | HEX NUT - 5/8"NC GR5 PL | 4 |
| 5 | 521004 | SHIM WASHER (9 PCS) | 1 |
| 6 | 521129 | WASHER KIT (3PCS) | 1 |
| 7 | 521130 | CASTLE NUT - M24 | 1 |
| 8 | 521390 | DECK GEARBOX KEY (3 PCS) | 1 |
| 9 | O.L. | COTTER PIN - 3/16" X 1.50 | 1 |
| 10 | 521432 | DECK GEARBOX | 1 |
| 11 | 526714 | GEAR BOX MOUNT - REAR DECK | 1 |

O.L. - OBTAIN LOCALLY

1.7 Wing Deck Assembly – L.H.

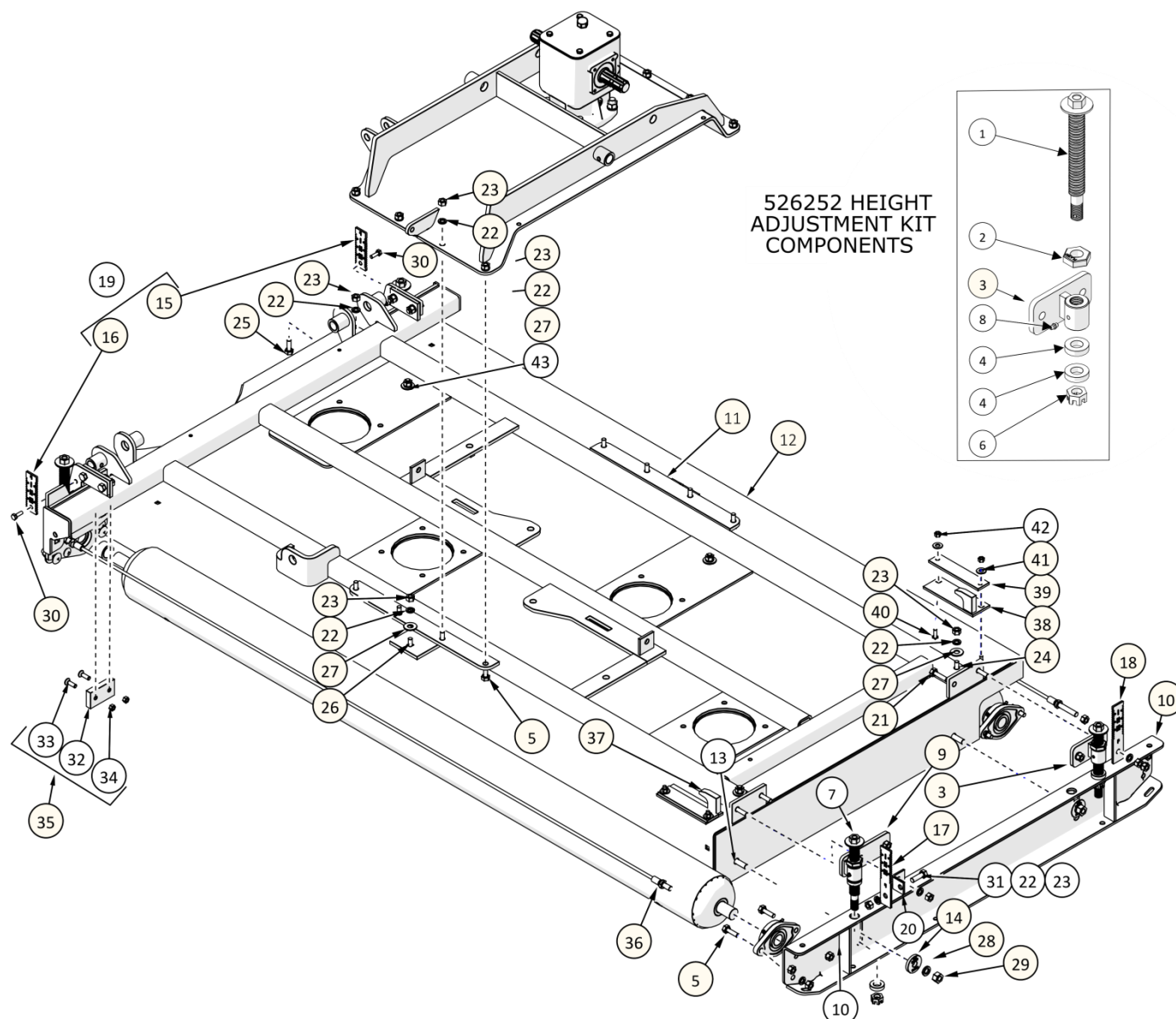


| ITEM | PART # | DESCRIPTION | QTY |
|------|-------------|---------------------------------|-----|
| 1 | 526176 | HEIGHT ADJUSTMENT ROD | 2 |
| 2 | SEE ITEM 7 | ACME JAM NUT | 4 |
| 3 | SEE ITEM 7 | DECK ADJUSTMENT BRACKET | 1 |
| 4 | 607580 | HEIGHT ADJ. BUSHING KIT (8 PCS) | 1 |
| 5 | O.L. | HEX BOLT - 1/2 X 1.50 NC GR5 PL | 8 |
| 6 | SEE ITEM 7 | CASTLE NUT - 3/4 NC | 2 |
| 7 | 526252 | TDR HEIGHT ADJ. KIT | 1 |
| 8 | O.L. | GREASE FITTING 1/4-28 STRAIGHT | 2 |
| 9 | 526742 | DECK ADJ. BRACKET - LONG | 1 |
| 10 | 526948 | DECK CHANNEL | 1 |
| 11 | 607300 | LH WING DECK FRAME | 1 |
| 12 | 607138 | LH WING DECK - TDR 30 | 1 |
| 13 | O.L. | CARRIAGE BOLT - 5/8 X 2 GR5 PL. | 2 |
| 14 | 526148 | CLAMP WASHER KIT (4 PCS) | 2 |
| 15 | SEE ITEM 19 | HEIGHT INDICATOR PLATE - FRONT | 1 |
| 16 | SEE ITEM 19 | HEIGHT INDICATOR PLATE - REAR | 1 |
| 17 | SEE ITEM 19 | HEIGHT PLATE - FRONT | 1 |
| 18 | SEE ITEM 19 | HEIGHT PLATE - REAR | 1 |
| 19 | 607312 | HEIGHT PLATE KIT | 1 |
| 20 | 527375 | HEIGHT PLATE ANGLE | 1 |
| 21 | O.L. | HEX BOLT - 1/2 X 1.75 NC GR5 PL | 6 |
| 22 | O.L. | LOCKWASHER - 1/2" PL | 26 |

| ITEM | PART # | DESCRIPTION | QTY |
|------|-------------|--------------------------------------|-----|
| 23 | O.L. | HEX NUT - 1/2" NC PL | 31 |
| 24 | O.L. | HEX BOLT- 1/2 X 3.00 NC GR5 PL | 2 |
| 25 | O.L. | HEX BOLT - 1/2 X 1.25 NC GR5 PL | 2 |
| 26 | O.L. | CARRIAGE BOLT - 1/2 X 1.75 GR5 PL | 2 |
| 27 | O.L. | FLAT WASHER - 1/2" PL | 9 |
| 28 | O.L. | LOCKWASHER - 5/8" PL | 2 |
| 29 | O.L. | HEX NUT - 5/8" NC PL | 2 |
| 30 | O.L. | HEX BOLT- 3/8" X 1.00 NC GR5 PL | 2 |
| 31 | O.L. | HEX BOLT- 1/2 X 1.00 NC GR5 PL | 1 |
| 32 | SEE ITEM 35 | DECK BUMPER | 1 |
| 33 | SEE ITEM 35 | COUNTERSUNK SCREW - 3/8"NC X 1.00 | 1 |
| 34 | SEE ITEM 35 | LOCK NUT - 3/8" NC | 1 |
| 35 | 607314 | DECK BUMPER KIT (X2 BUMPERS) | 1 |
| 36 | 607645 | WIPER CABLE - TDR30 WING | 1 |
| 37 | 527002 | DECK LOCK MOUNT - RIGHT | 1 |
| 38 | 527004 | DECK LOCK MOUNT - LEFT | 1 |
| 39 | 607595 | DECK LOCK PAD | 2 |
| 40 | O.L. | CARRIAGE BOLT - 3/8"X 1.25 NC GR5 PL | 4 |
| 41 | O.L. | FLAT WASHER - 3/8" PL | 4 |
| 42 | O.L. | HEX LOCK NUT - 3/8" NC PL | 4 |
| 43 | O.L. | CARRIAGE BOLT - 1/2 X 1.25 NC GR5 PL | 2 |

O.L. - OBTAIN LOCALLY

1.8 Wing Deck Assembly – R.H.

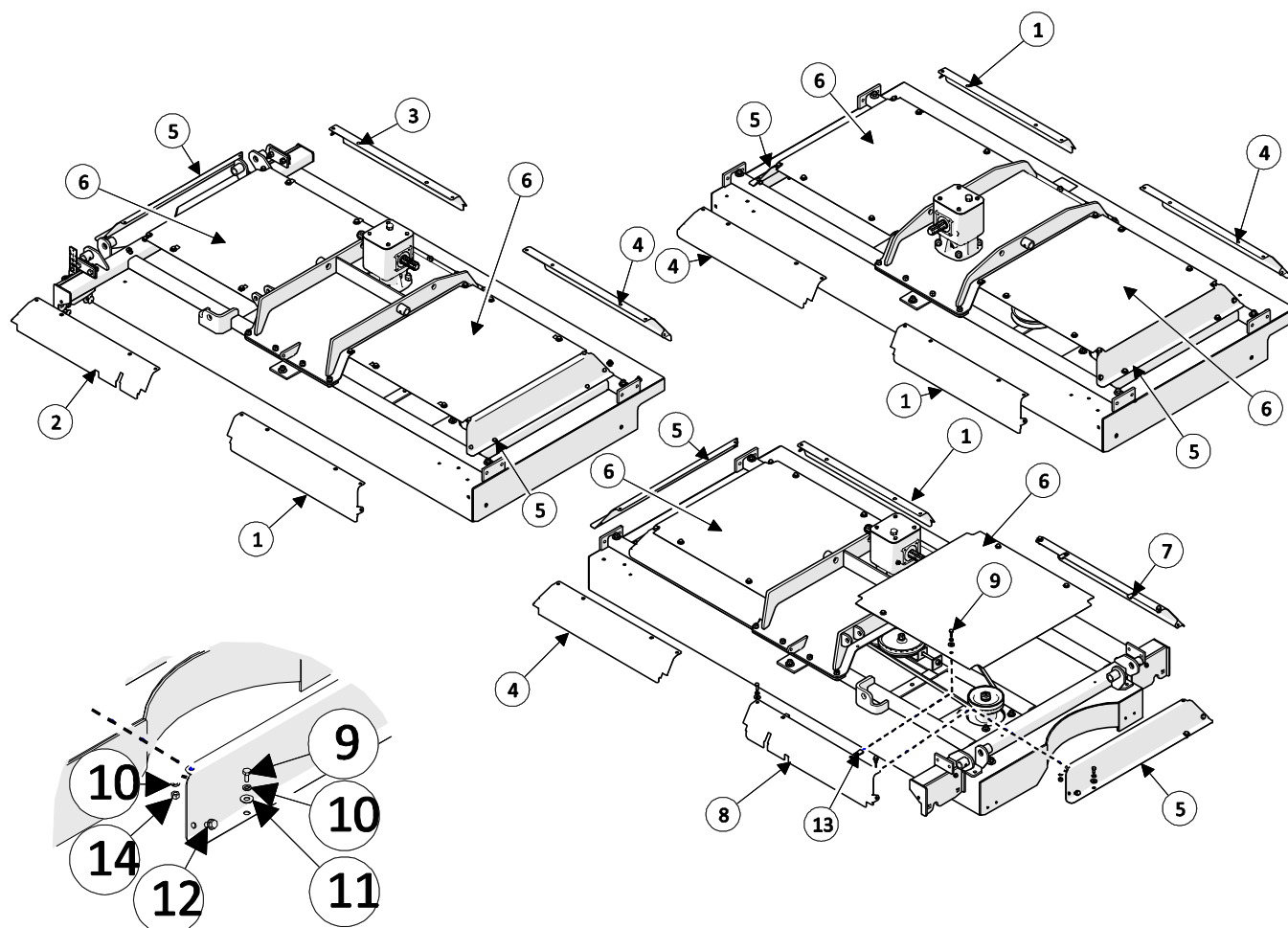


| ITEM | PART # | DESCRIPTION | QTY |
|------|-------------|-----------------------------------|-----|
| 1 | 526176 | HEIGHT ADJ. ROD | 2 |
| 2 | SEE ITEM 7 | ACME JAM NUT | 1 |
| 3 | SEE ITEM 7 | DECK ADJUSTMENT BRACKET | 1 |
| 4 | 607580 | HEIGHT ADJ. BUSHING KIT (8PCS) | 1 |
| 5 | O.L. | HEX BOLT- 1/2 X 1.5 NC GR5 PL | 13 |
| 6 | SEE ITEM 7 | CASTLE NUT - 3/4 NC | 1 |
| 7 | 526252 | HEIGHT ADJUSTMENT KIT | 1 |
| 8 | O.L. | GREASE FITTING 1/4 - 28, STRAIGHT | 1 |
| 9 | 526742 | DECK ADJ. BRACKET LONG | 1 |
| 10 | 526948 | DECK CHANNEL | 1 |
| 11 | 607302 | RH WING DECK FRAME | 1 |
| 12 | 607202 | RH WING DECK - TDR30 | 1 |
| 13 | O.L. | CARRIAGE BOLT - 5/8 X 2 GR5 PL | 2 |
| 14 | 526148 | CLAMP WASHER KIT (4 PCS) | 1 |
| 15 | SEE ITEM 19 | HEIGHT PLATE - FRONT | 1 |
| 16 | SEE ITEM 19 | HEIGHT PLATE REAR | 1 |
| 17 | SEE ITEM 19 | HEIGHT PLATE - FRONT | 1 |
| 18 | SEE ITEM 19 | HEIGHT PLATE - REAR | 1 |
| 19 | 607312 | HEIGHT PLATE KIT | 1 |
| 20 | 527375 | HEIGHT PLATE ANGLE | 1 |
| 21 | O.L. | HEX BOLT- 1/2 X 1.75 NC GR5 PL | 4 |
| 22 | O.L. | LOCK WASHER- 1/2 PL | 32 |

| ITEM | PART # | DESCRIPTION | QTY |
|------|-------------|--------------------------------------|-----|
| 23 | O.L. | HEX NUT - 1/2NC GR5 PL | 36 |
| 24 | O.L. | HEX BOLT- 1/2 X 3.00 NC GR5 PL | 2 |
| 25 | O.L. | HEX BOLT- 1/2 X 1.25 NC GR5 PL | 2 |
| 26 | O.L. | CARRIAGE BOLT - 1/2 X 1.75 NC GR5 PL | 1 |
| 27 | O.L. | FLAT WASHER - 1/2 PL | 7 |
| 28 | O.L. | LOCKWASHER - 5/8 PL | 2 |
| 29 | O.L. | HEX NUT - 5/8NC GR5 PL | 2 |
| 30 | O.L. | HEX BOLT- 3/8 X 1.00 NC GR5 PL | 2 |
| 31 | O.L. | HEX BOLT - 1/2 X 1.00 NC GR5 PL | 1 |
| 32 | SEE ITEM 35 | DECK BUMPER | 1 |
| 33 | SEE ITEM 35 | COUNTERSUNK SCREW - 3/8NC X 1.00 | 2 |
| 34 | O.L. | HEX LOCK NUT - 3/8 NC GR5 UPL | 2 |
| 35 | 607314 | DECK BUMPER KIT (2 BUMPERS & HW) | 1 |
| 36 | 607645 | WIPER CABLE - TDR30 WING | 2 |
| 37 | 527002 | DECK LOCK MOUNT - RIGHT | 1 |
| 38 | 527004 | DECK LOCK MOUNT - LEFT | 1 |
| 39 | 607595 | DECK LOCK PAD | 1 |
| 40 | O.L. | CARRIAGE BOLT - 3/8 X 1.25 NC GR5 PL | 4 |
| 41 | O.L. | FLAT WASHER - 3/8 PL | 4 |
| 42 | O.L. | HEX LOCK NUT - 3/8 NC GR5 | 4 |
| 43 | O.L. | CARRIAGE BOLT - 1/2 1.25 NC GR5 PL | 2 |

O.L. - OBTAIN LOCALLY

1.9 Wing Deck Guarding

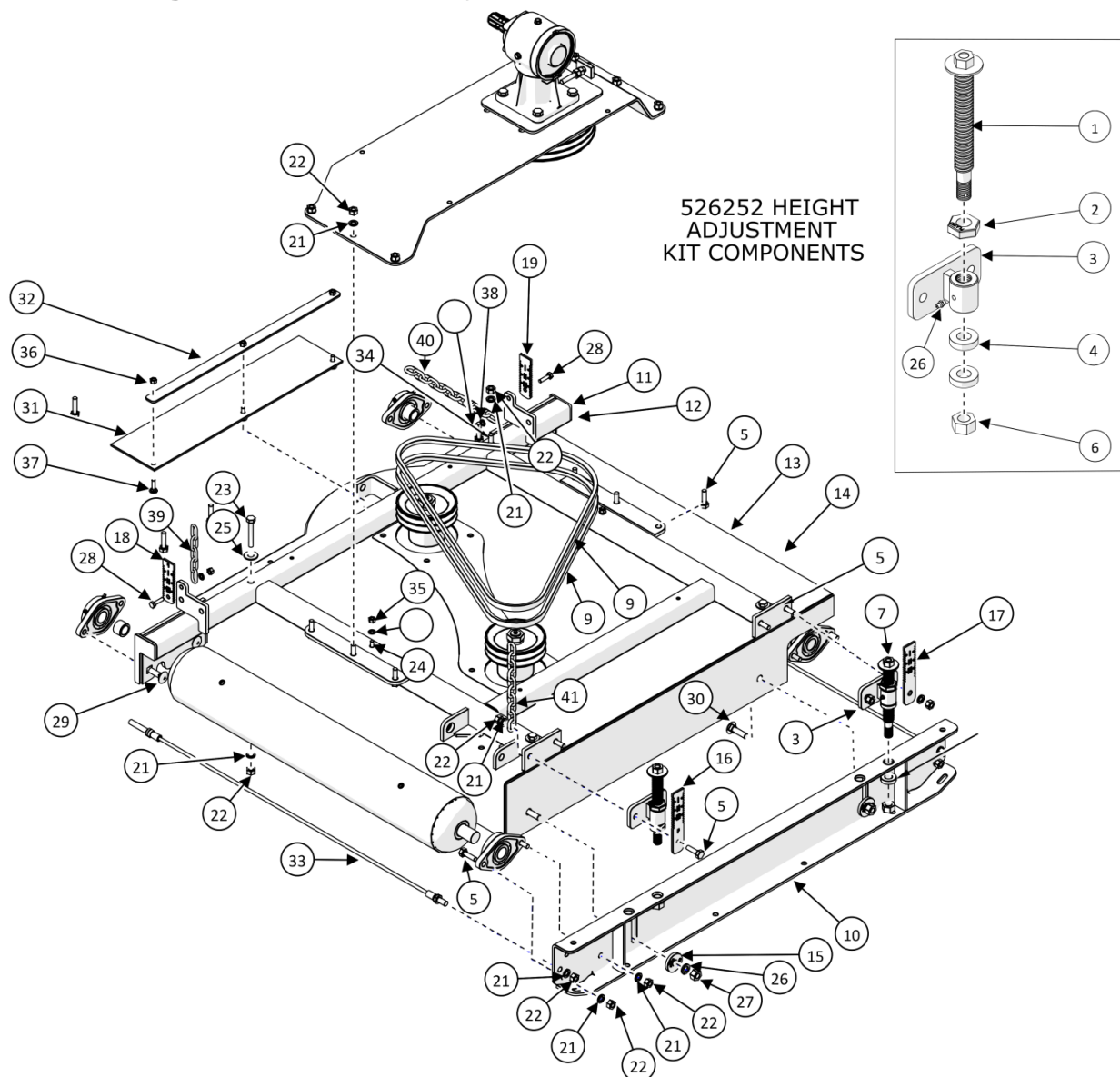


SHIELD MOUNTING HARDWARE

| ITEM | PART # | DESCRIPTION | QTY |
|------|--------|------------------------------------|-----|
| 1 | 527409 | DECK SHIELD - LH | 4 |
| 2 | 607619 | DECK SHIELD RIGHT FRONT | 1 |
| 3 | 607623 | DECK SHIELD RIGHT REAR | 1 |
| 4 | 527421 | DECK SHIELD SIDE - RH | 4 |
| 5 | 527411 | DECK SHIELD END | 6 |
| 6 | 527419 | DECK SHIELD - TOP | 6 |
| 7 | 607621 | DECK SHIELD LEFT REAR | 1 |
| 8 | 607617 | DECK SHIELD LEFT FRONT | 1 |
| 9 | O.L. | HEX BOLT - 3/8 X 1.00" NC GR5 PL | 48 |
| 10 | O.L. | LOCKWASHER - 3/8" PL | 60 |
| 11 | O.L. | FLAT WASHER - 3/8" PL | 36 |
| 12 | O.L. | FLANGE BOLT - 3/8"NC X 0.75 GR5 PL | 18 |
| 13 | 527308 | U-NUT - 3/8" NC | 32 |
| 14 | O.L. | HEX NUT - 3/8" NC | 24 |

O.L. - OBTAIN LOCALLY

1.10 Outer Wing Deck Assembly

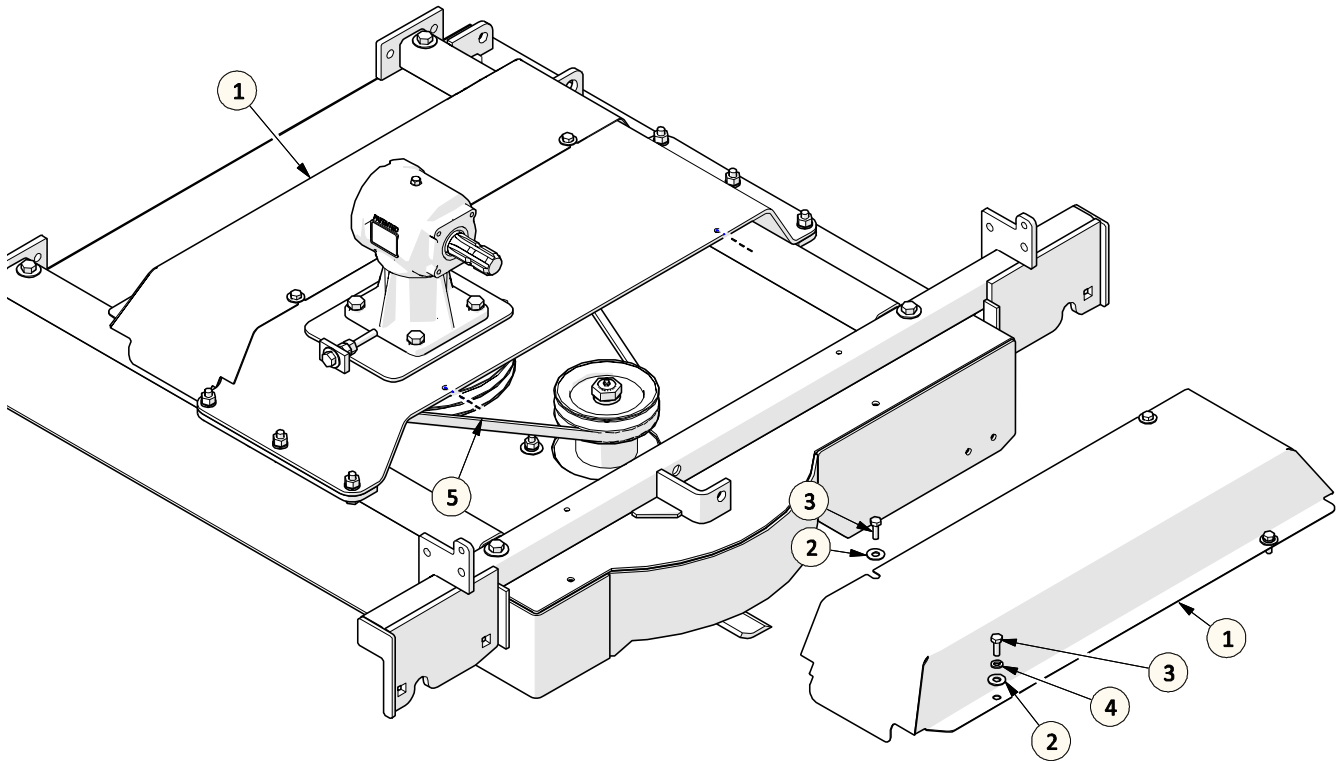


| ITEM | PART # | DESCRIPTION | QTY |
|------|-------------|--|-----|
| 1 | 526176 | HEIGHT ADJ. ROD | 2 |
| 2 | SEE ITEM 7 | ACME JAM NUT | 2 |
| 3 | SEE ITEM 7 | DECK ADJUSTMENT BRACKET | 2 |
| 4 | 607580 | HEIGHT ADJ. BUSHING KIT (8 PCS) | 2 |
| 5 | O.L. | HEX BOLT- 1/2 X 1.5 NC GR5 PL | 14 |
| 6 | O.L. | CASTLE NUT - 3/4" NC | 2 |
| 7 | 526252 | HEIGHT ADJUSTMENT KIT | 1 |
| 8 | O.L. | GREASE FITTING 1/4" - 28 STRAIGHT | 1 |
| 9 | 212037 | BELT - B72 | 2 |
| 10 | 526948 | DECK CHANNEL - GALVANIZED | 1 |
| 11 | 607268 | DECK FRAME - LH OUTER WING | 1 |
| 12 | 607274 | DECK FRAME - RH OUTER WING (NOT SHOWN) | 1 |
| 13 | 607120 | LH OUTER WING DECK | 1 |
| 14 | 607200 | RH OUTER WING DECK (NOT SHOWN) | 1 |
| 15 | 526148 | CLAMP WASHER KIT (4 PCS) | 2 |
| 16 | SEE ITEM 20 | HEIGHT INDICATOR PLATE - FRONT | 1 |
| 17 | SEE ITEM 20 | HEIGHT INDICATOR PLATE- REAR | 1 |
| 18 | SEE ITEM 20 | HEIGHT INDICATOR PLATE- FRONT | 1 |
| 19 | SEE ITEM 20 | HEIGHT INDICATOR PLATE- REAR | 1 |
| 20 | 607312 | TDR30 HEIGHT PLATE KIT (4 PCS) | 1 |
| 21 | O.L. | LOCKWASHER - 1/2" PL | 19 |

| ITEM | PART # | DESCRIPTION | QTY |
|------|--------|---|-----|
| 22 | O.L. | HEX NUT - 1/2" NC GR5 PL | 19 |
| 23 | O.L. | HEX BOLT- 1/2 X 3 NC GR5 PL | 3 |
| 24 | O.L. | CARRIAGE BOLT - 3/8" X 2.75" NC GR5 PL | 2 |
| 25 | O.L. | FLAT WASHER - 1/2" PL | 4 |
| 26 | O.L. | LOCKWASHER - 5/8" PL | 4 |
| 27 | O.L. | HEX NUT - 5/8" NC GR5 PL | 2 |
| 28 | O.L. | HEX BOLT - 3/8" X 1.75 NC GR5 PL | 2 |
| 29 | O.L. | CARRIAGE BOLT - 5/8" X 1.75" NC GR5 PL | 2 |
| 30 | O.L. | CARRIAGE BOLT - 5/8 X 2.00" NC GR5 PL | 2 |
| 31 | 607599 | GRASS MAT | 1 |
| 32 | 607607 | BELT STRAP | 1 |
| 33 | 607647 | WIPER CABLE - TDR30 OUTER WING DECK | 2 |
| 34 | O.L. | CARR. BOLT- 1/2" X 3.00 NC GR5 PL | 1 |
| 35 | O.L. | HEX NUT - 3/8" NC | 4 |
| 36 | O.L. | LOCK NUT - 3/8"NC GR5 PL | 3 |
| 37 | O.L. | CARR. BOLT- 3/8" X 1.00 NC GR5 PL | 3 |
| 38 | O.L. | LOCKWASHER - 3/8" PL | 3 |
| 39 | 607270 | WING STOP CHAIN (TO WING FRAME) | 1 |
| 40 | 607685 | WING STOP CHAIN - REAR (TO MAIN DECK) | 1 |
| 41 | 607683 | WING STOP CHAIN - FRONT (TO WING FRAME) | 1 |

O.L. - OBTAIN LOCALLY

1.11 Outer Wing Deck Guarding



| ITEM | PART # | DESCRIPTION | QTY |
|------|--------|---------------------------------|-----|
| 1 | 607308 | OUTER DECK SHIELD | 2 |
| 2 | O.L. | LOCKWASHER - 1/2" PL | 8 |
| 3 | O.L. | HEX BOLT- 3/8" X 1.00 NC GR5 PL | 8 |
| 4 | O.L. | LOCKWASHER - 3/8" PL | 1 |

O.L. - OBTAIN LOCALLY