

MAGNUM M SERIES DIESEL SOD INSTALLER PARTS MANUAL



**MAGNUM M4226D
MAGNUM M4826D**

Bucyrus Equipment Co., Inc.
Box 156, 209 Main
Hillsdale, Ks 66036
1-800-330-0857
www.magnumenp.com

RE-ORDER NUMBER: IND-MANUAL
REVISION: IN-100007



M SERIES

MAGNUM M4226D / M4826D PARTS MANUAL

The purpose of this manual is for parts identification of the Magnum M series sod installer. This manual is not to be used for assembly. This manual includes parts lists and illustrations of all available replacement parts for the Magnum M series sod installer. A table of contents is placed at the beginning of the manual for location of specific parts. Keep this manual available for reference in the shop area.

At the time of publication all information contained in this manual was technically correct. However, all materials and specifications are subject to change without notice.

Comments and suggestions about this manual may be directed to: Bucyrus Equipment Co., Inc., PO Box 156-209 Main, Hillsdale, KS 66036. Phone 1-800-330-0857

© Copyright 2013 BECI. All information contained within this publication is based on the latest product information at the time of publication. Due to constant improvements in the design and quality of production components, some minor discrepancies may result between the actual vehicle and the information presented in this publication. Depictions and/or procedures in this publication are intended for reference use only. No liability can be accepted for omissions or inaccuracies. Any reprinting or reuse of the depictions and/or procedures contained within, whether whole or in part, is expressly prohibited. Printed in U.S.A.

TABLE OF CONTENTS

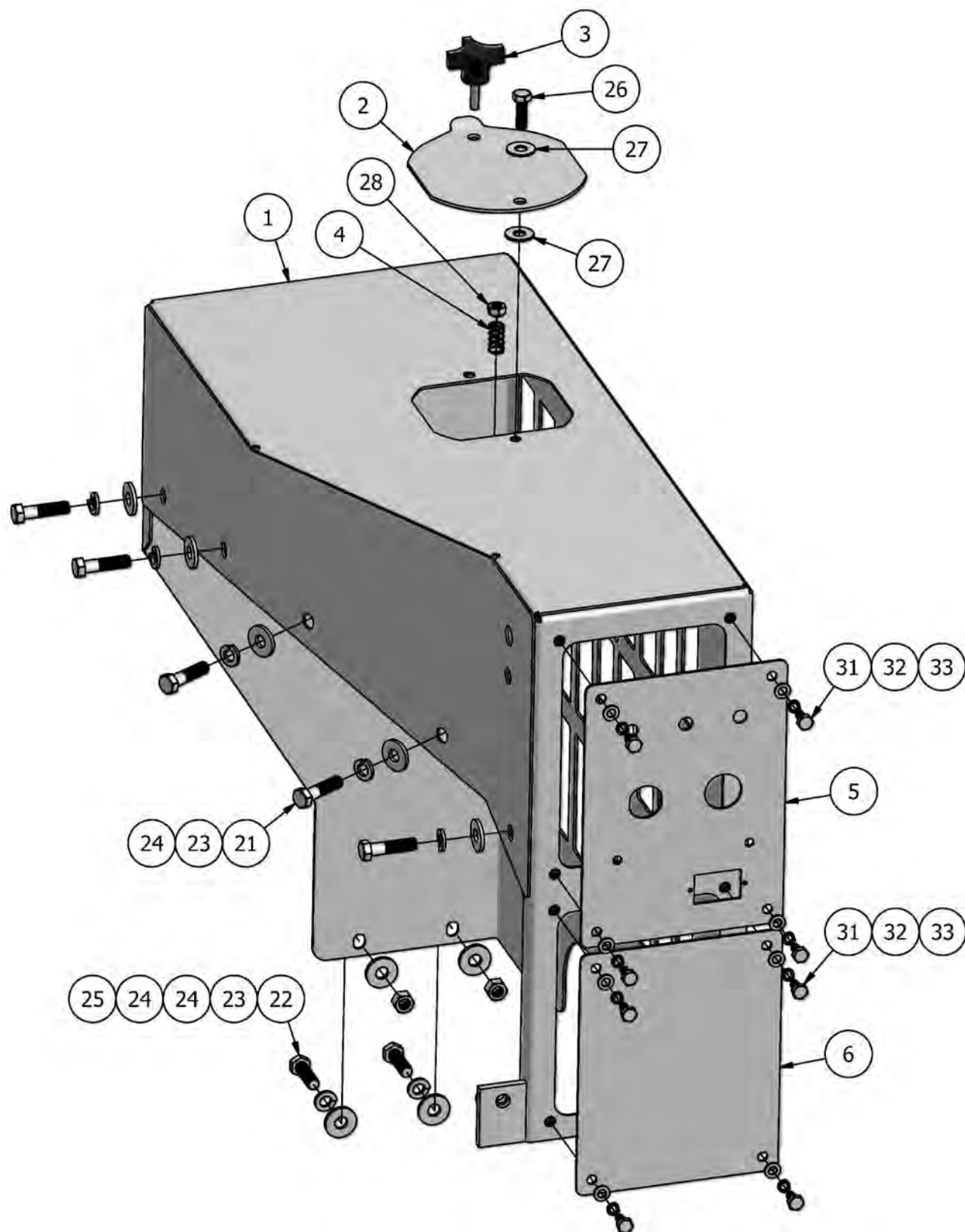
Section 1	Brake / Wheel / Hub
Section 2	Decals
Section 3	Electrical
Section 4	Engine
Section 5	Front Spindle
Section 6	Hydraulics
Section 7	Hydrostat / Roll Lift Controls
Section 8	Operator Platform
Section 9	Roll Lift
Section 10	Shields
Section 11	Steering Axle

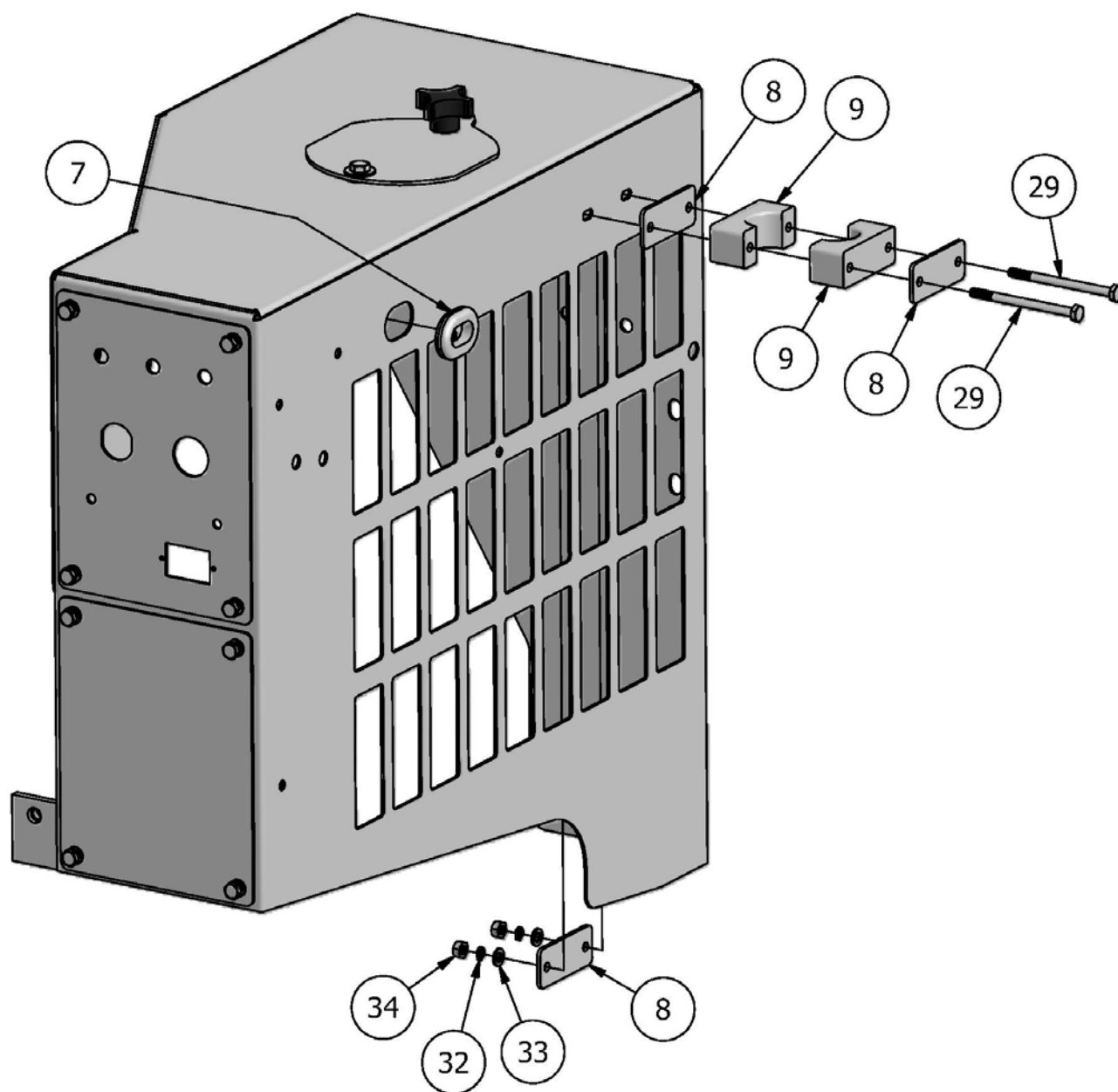


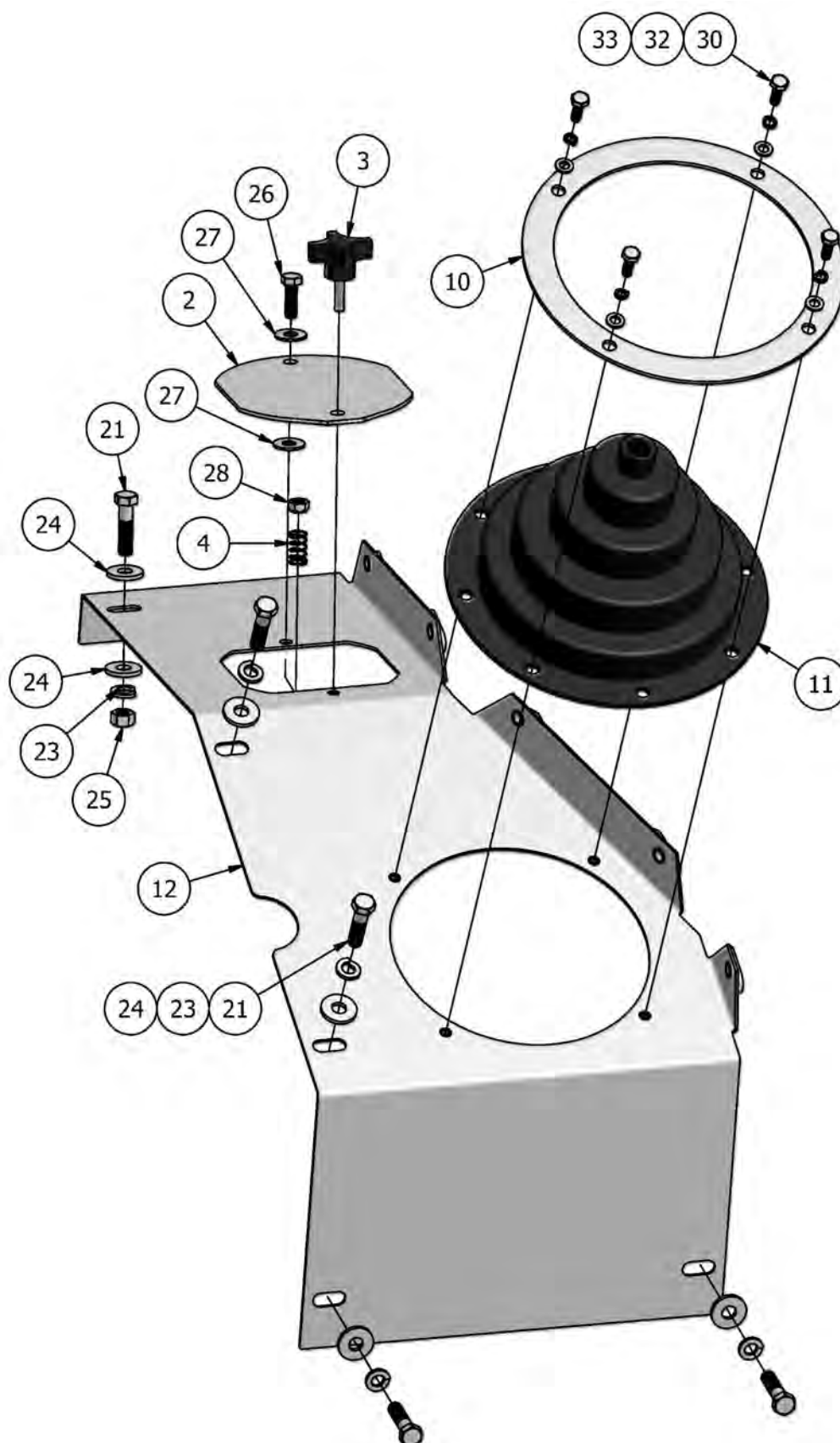
SHIELDS

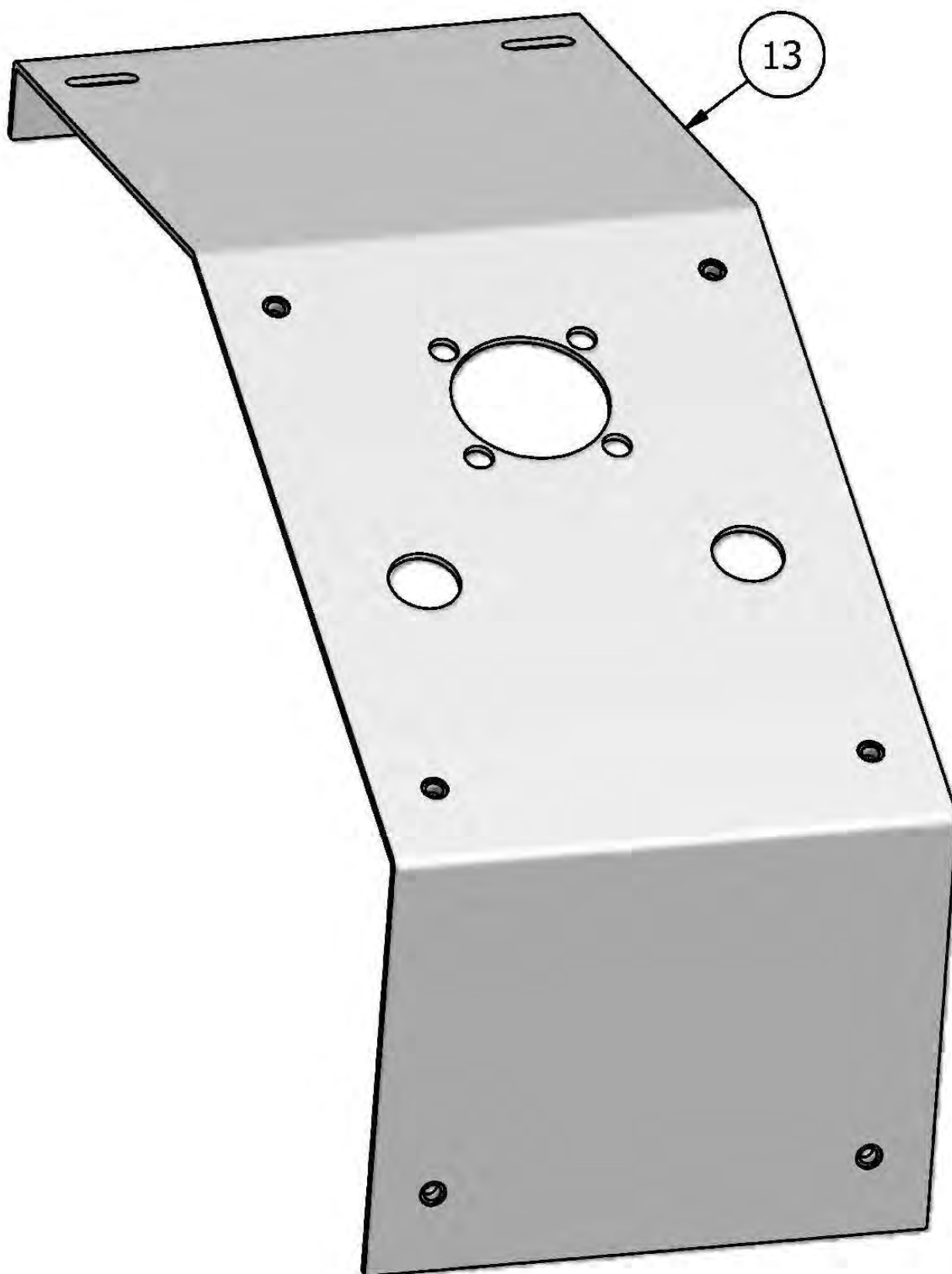
SHIELDS - PARTS LIST			
ITEM	QTY	PART NUMBER	DESCRIPTION
1	1	IND-CVR104	SHIELD, RIGHT OUTER
2	2	IND-CVR202	SHIELD, CAP
3	2	7921K21	KNOB
4	2	9434K97	SPRING
5	1	IND-CVR200	CONTROL PANEL
6	1	IND-CVR201	ELECTRICAL PANEL COVER
7	1	9600K59	RUBBER GROMMET
8	3	10686-02384	BAR SLIDE PLATE
9	2	10686-02383	BAR SLIDE
10	1	IN-CVR200	RUBBER BOOT RING
11	1	885	RUBBER BOOT
12	1	IND-CVR102	SHIELD, RIGHT INNER
13	1	IND-CVR100	SHIELD, CENTER
14	1	68381	AIR INTAKE RAIN CAP
15	1	IND-CRV101	SHIELD, LEFT INNER
16	1	IN-CVR113	SHIFT STOP FLAP
17	1	9000-14	DOCUMENT HOLDER (NO LONGER AVAILABLE SEE VERSION 2)
18	2	3225T86	P-CLAMP
19	1	IND-CVR103	SHIELD, LEFT OUTER
20	1	IND-CVR105	COOLER BRACKET
21	18	13109	3/8"-16 X 1-1/2" CAPSCREW PT
22	4	13107	3/8"-16 X 1-1/4" CAPSCREW
23	22	33893	3/8" LOCK WASHER
24	31	33859	3/8" FLAT WASHER
25	9	36306	3/8"-16 HEX NUT
26	2	13055	5/16"-18 X 1" CAPSCREW
27	4	33858	5/16" FLAT WASHER
28	2	37262	5/16"-18 LOCK NUT
29	2	13016	1/4"-20 X 3-1/2" CAPSCREW, PT
30	6	13003	1/4"-20 X 3/4" CAPSCREW
31	8	13001	1/4"-20 X 1/2" CAPSREW
32	16	33891	1/4" LOCK WASHER
33	18	33857	1/4" FLAT WASHER
34	4	36302	1/4"-20 HEX NUT
35	1	S24087600	DOCUMENT HOLDER
36	2	33892	5/16" LOCK WASHER
37	2	36304	5/16"-18 HEX NUT

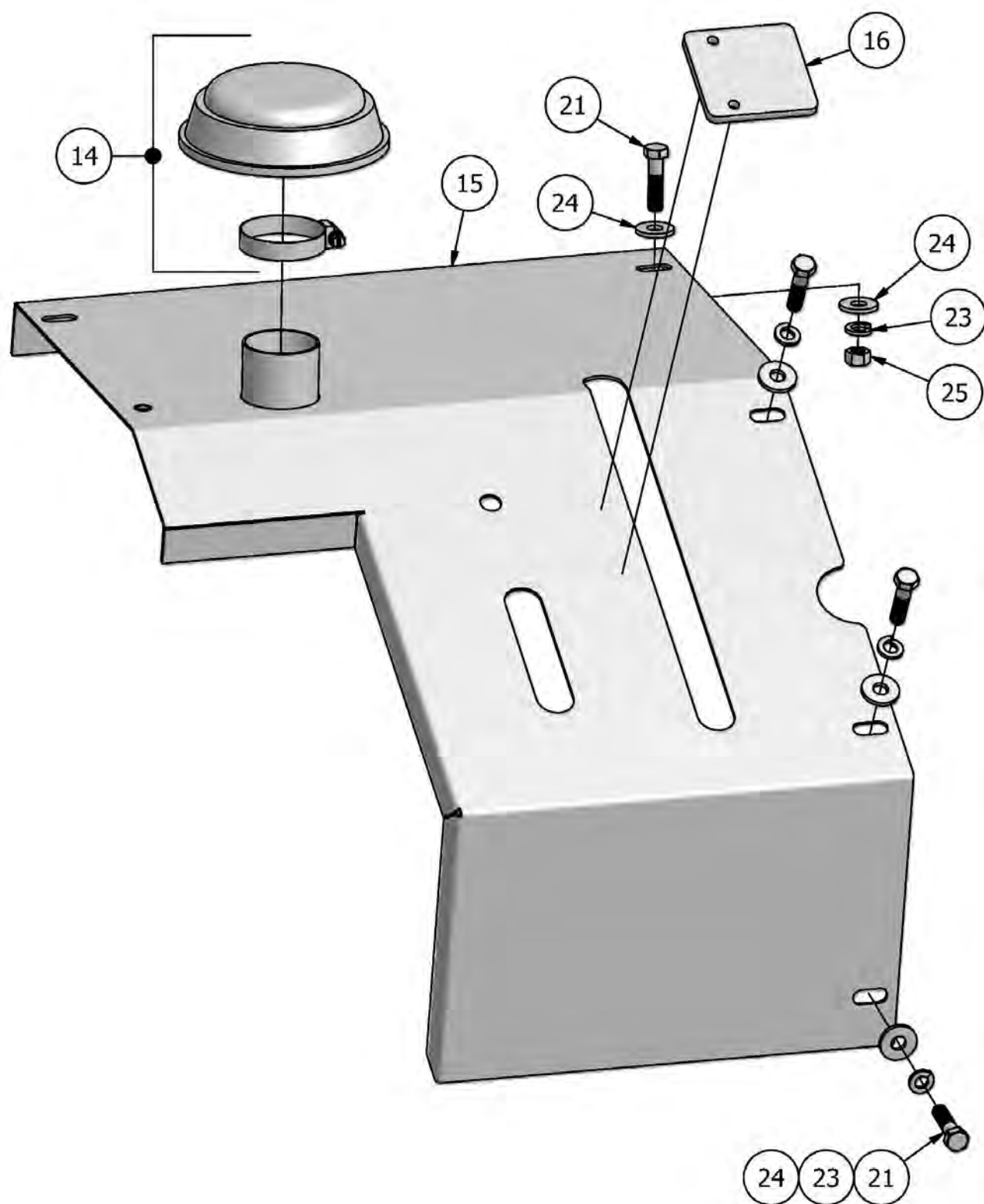






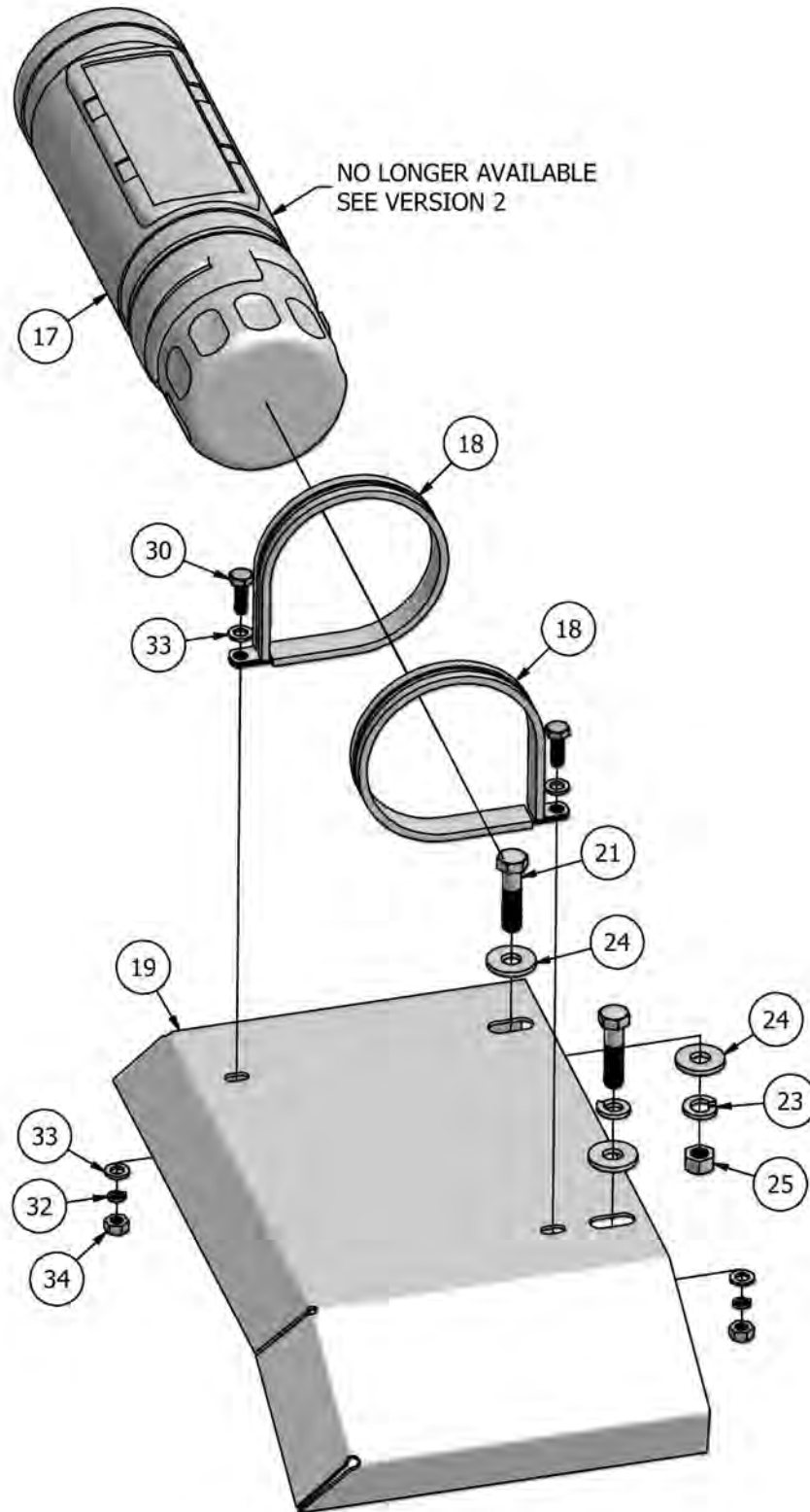




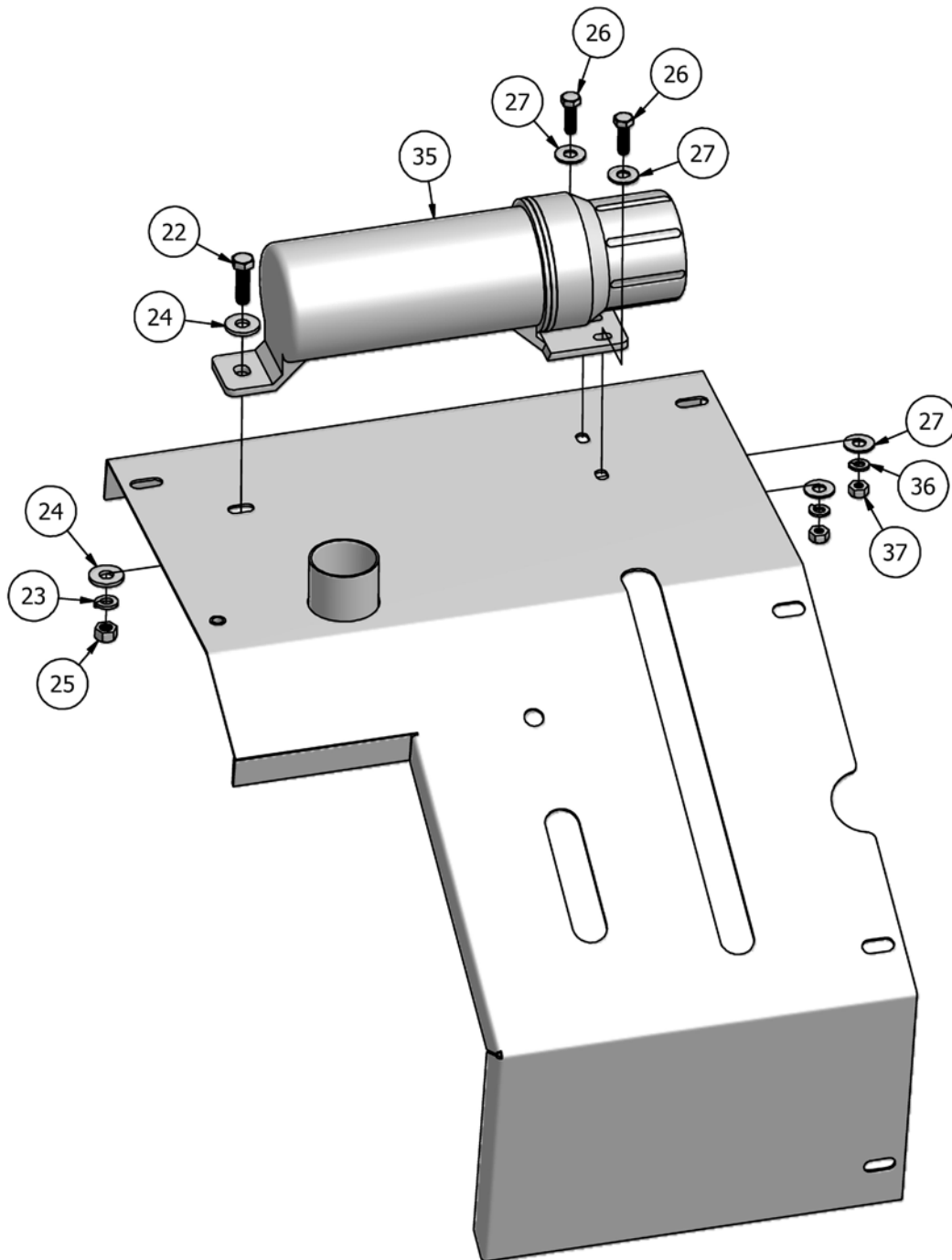


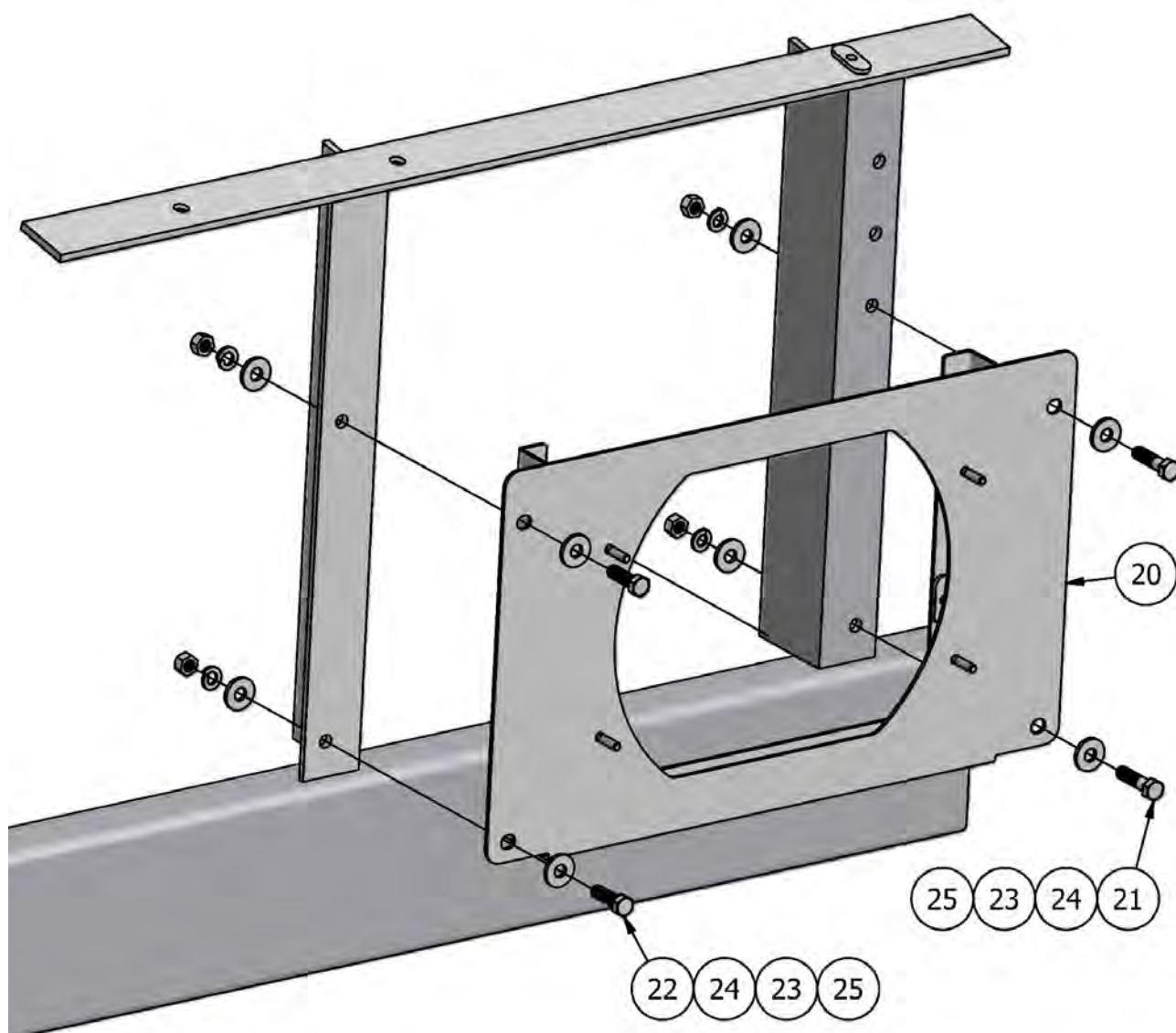
SHIELDS

VERSION 1



VERSION 2





This image shows a single sheet of white paper with horizontal ruling lines. The lines are evenly spaced and run across the width of the page. There are no margins, text, or other markings on the paper.

