

MAGNUM BR SOD HARVESTER PARTS MANUAL



Bucyrus Equipment Co., Inc.
Box 156, 209 Central Ave.
Hillsdale, Ks 66036
1-800-330-0857
www.magnumenp.com

RE-ORDER NUMBER: BRPTSMANUAL
REVISION: BRM-100017



MAGNUM BR SOD HARVESTER PARTS MANUAL

The purpose of this manual is for parts identification of the Magnum BR sod harvester. This manual is not to be used for assembly. This manual includes parts lists and illustrations of all available replacement parts for the Magnum BR harvesters. A table of contents is placed at the beginning of the manual for location of specific parts. Keep this manual available for reference in the shop area.

At the time of publication all information contained in this manual was technically correct. However, all materials and specifications are subject to change without notice.

Comments and suggestions about this manual may be directed to: Bucyrus Equipment Co., Inc., PO Box 156-209 Main, Hillsdale, KS 66036. Phone 1-800-330-0857

©Copyright 2005 BECI. All information contained within this publication is based on the latest product information at the time of publication. Due to constant improvements in the design and quality of production components, some minor discrepancies may result between the actual vehicle and the information presented in this publication. Depictions and/or procedures in this publication are intended for reference use only. No liability can be accepted for omissions or inaccuracies. Any reprinting or reuse of the depictions and/or procedures contained within, whether whole or in part, is expressly prohibited. Printed in U.S.A.

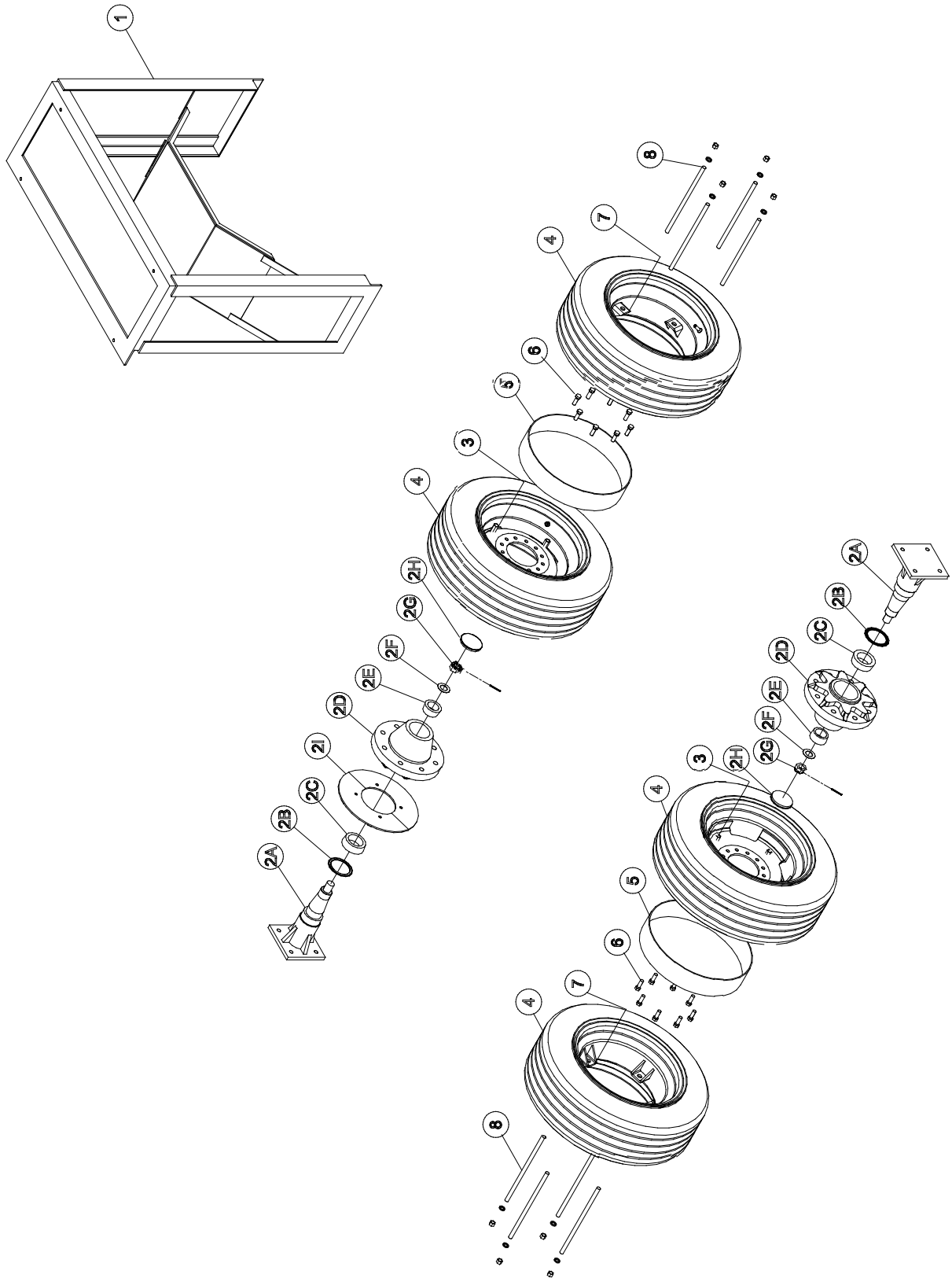
TABLE OF CONTENTS

Section 1	32/42/48 Floating Heads
Section 2	42/48 Solid Heads / Coulter Option
Section 3	30 Solid Heads / Coulter Option
Section 4	Depth Control
Section 5	1 st & 2 ND Conveyor
Section 6	Wheel and Cooler
Section 7	Electrical Components
Section 8	Hydraulics
Section 9	Increaser Pump
Section 10	Dual Kit
Section 11	Decals

DUAL KIT

Parts List

ITEM	QTY	PART NUMBER	DESCRIPTION
1	1	DUALEXT	Dual extension
2	1	W888-HD	Complete hub assembly – Right Side (magnet ring)
	1	W888-HD (L)	Complete hub assembly – Left side
2A	2	DU001	Spindle
2B	2	DU002	Dust seal
2C	2	DU003	Cone bearing
2D	1	DU004-RH	8 hole hub – Right side, drilled and tapped for magnet ring
	1	DU004-LH	8 hole hub – Left side
2E	2	DU005	Cone bearing
2F	2	DU006	Flat washer
2G	2	DU007	Spindle nut
2H	2	DU008	Dust cap
2I	1	RW3000-HD	Magnet ring, dual kit
3	2	DUARM-HD	15 x 8 rim, 8 hole, inner wheel
4	4	275R15	Tire
5	2	DUASPA	Spacer ring, dual kit
6	16	58LUG	5/8" lug bolt
7	2	DUARM-OT	15 x 8 rim, 8 hole, outer wheel
8	8	DUABOLT	Dual kit bolt w/ lock washer & nut



NOTES:

This image shows a full page of blank, lined paper. It features approximately 20 evenly spaced horizontal black lines across its entire width, typical of notebook or legal stationery. The background is a solid off-white color, and there are no margins, text, or other markings present.