

MAGNUM A SERIES DIESEL SOD INSTALLER PARTS MANUAL



**MAGNUM A42D
MAGNUM A48D**

Bucyrus Equipment Co., Inc.
Box 156, 209 Main
Hillsdale, Ks 66036
1-800-330-0857
www.magnumenp.com

RE-ORDER NUMBER: 2IND-MANUAL
REVISION: 2IND-100010



A SERIES

MAGNUM A42D / A48D PARTS MANUAL

The purpose of this manual is for parts identification of the Magnum A series sod installer. This manual is not to be used for assembly. This manual includes parts lists and illustrations of all available replacement parts for the Magnum A series sod installer. A table of contents is placed at the beginning of the manual for location of specific parts. Keep this manual available for reference in the shop area.

At the time of publication all information contained in this manual was technically correct. However, all materials and specifications are subject to change without notice.

Comments and suggestions about this manual may be directed to: Bucyrus Equipment Co., Inc., PO Box 156-209 Main, Hillsdale, KS 66036. Phone 1-800-330-0857

© Copyright 2013 BECI. All information contained within this publication is based on the latest product information at the time of publication. Due to constant improvements in the design and quality of production components, some minor discrepancies may result between the actual vehicle and the information presented in this publication. Depictions and/or procedures in this publication are intended for reference use only. No liability can be accepted for omissions or inaccuracies. Any reprinting or reuse of the depictions and/or procedures contained within, whether whole or in part, is expressly prohibited. Printed in U.S.A.

RE-ORDER NUMBER: 2IND-MANUAL
REVISION: 2IND-100010

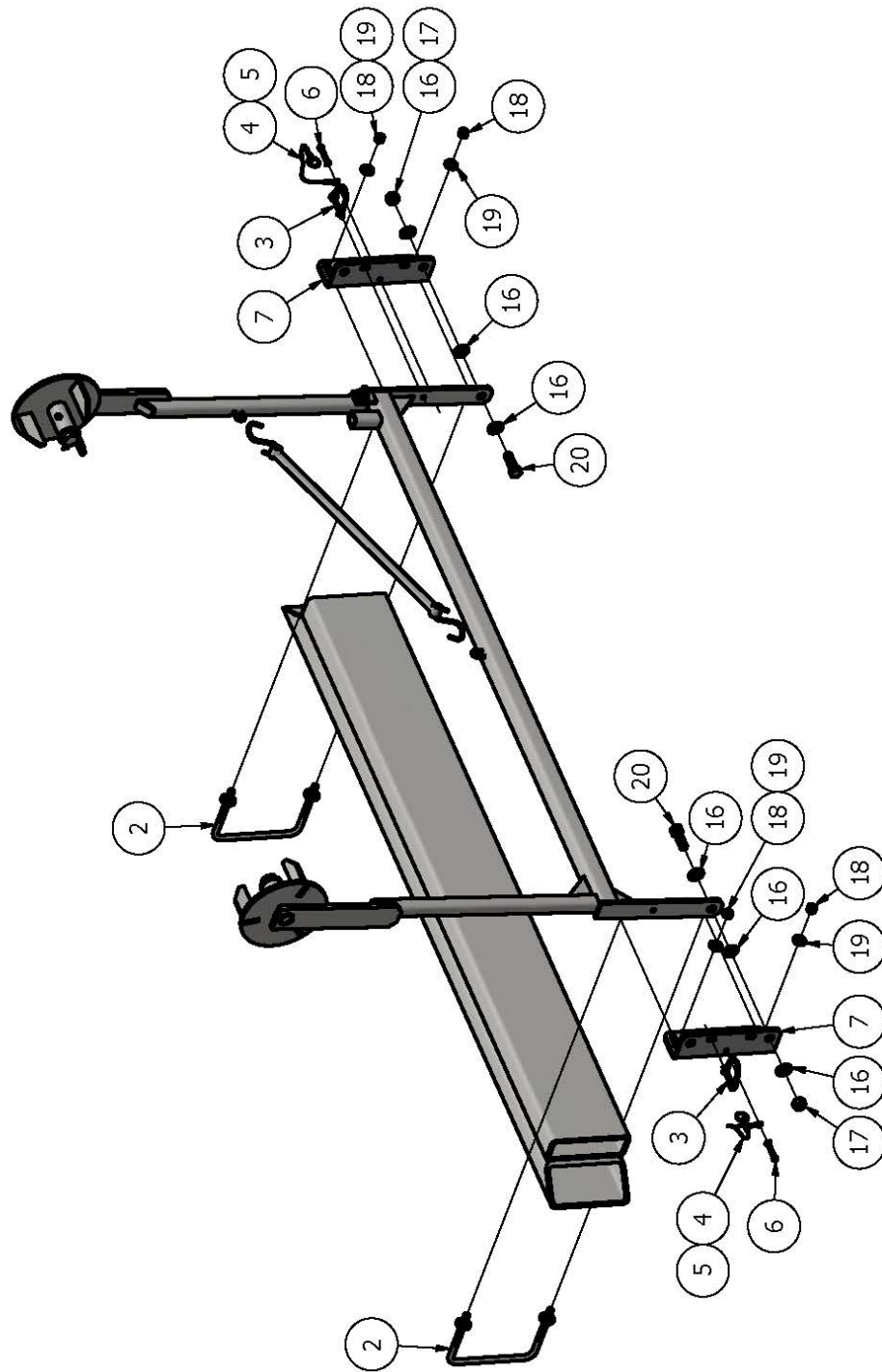
TABLE OF CONTENTS

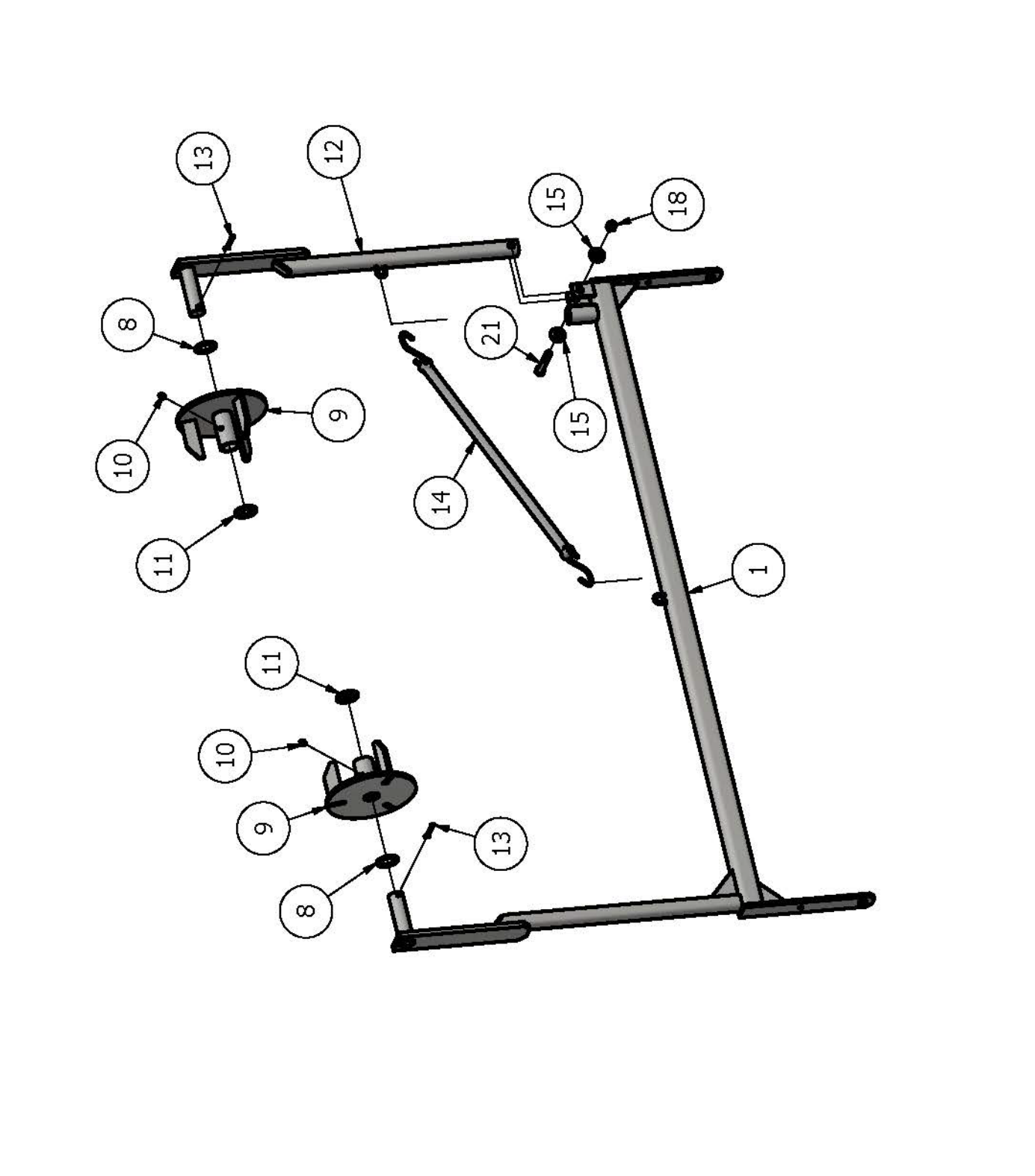
Section 1	BRAKE, WHEEL, & HUB
Section 2	DECALS
Section 3	ELECTRICAL
Section 4	ENGINE
Section 5	FRONT SPENDLE
Section 6	HYDRALICS
Section 7	HYDROSTAT ROLL LIFT CONTROL
Section 8	OPERATORS PLATFORM
Section 9	ROLL LIFT
Section 10	SHIELDS
Section 11	STEERING AXLE

NET RECLAIMER - PARTS LIST

ITEM	QTY	PART NUMBER	DESCRIPTION
1	1	42IN-RCL103 48IN-RCL103	NET RECLAIMER, 42" FRAME GEN 1/GEN 2 NET RECLAIMER, 48" FRAME GEN 1/GEN 2
2	2	0156435	3/8" X 5" X 6" SQ U BOLT
3	2	P7950	1/4" SNAP PIN
4	2	90177A217	7/8" OD X 3/4" ID SPLIT RING
5	2	30345T564	LANYARD, WIRE ROPE, 8" LONG
6	2	65127	3/16" COTTER PIN
7	2	IN-RCL201	NET RECLAIMER FRAME MNT
8	2	33445	1"-14 GA. WASHER
9	2	IN-RCL102	NET RECLAIMER CONE
10	2	60105	1/4"-28 GREASE FITTING, ST
11	2	33446	1"-10 GA WASHER
12	1	IN-RCL101	NET RECLAIMER ARM
13	2	65078	1/8" X 1-1/2" COTTER PIN
14	1	BUN100	RED BUNGEE
15	2	33859	3/8" FLAT WASHER
16	6	33817	1/2" SAE WASHER
17	2	37268	1/2"-13 LOCKNUT
18	5	37212	3/8"-16 HEX NUT, REV LOCK
19	4	33858	5/16" FLAT WASHER
20	2	13209	1/2"-13 X 1 1/2" CAPSCREW PT
21	1	13113	3/8"-16 X 2 1/2" CAPSCREW PT







This image shows a full page of blank white paper with horizontal ruling lines. The lines are evenly spaced and run across the width of the page, providing a template for writing or drawing. There are no margins, text, or other markings present.