

# **MAGNUM M SERIES DIESEL SOD INSTALLER PARTS MANUAL**



**MAGNUM M4226D  
MAGNUM M4826D**

Bucyrus Equipment Co., Inc.  
Box 156, 209 Main  
Hillsdale, Ks 66036  
1-800-330-0857  
[www.magnumenp.com](http://www.magnumenp.com)

RE-ORDER NUMBER: IND-MANUAL  
REVISION: IN-100007





## **M SERIES**

# **MAGNUM M4226D / M4826D PARTS MANUAL**

The purpose of this manual is for parts identification of the Magnum M series sod installer. This manual is not to be used for assembly. This manual includes parts lists and illustrations of all available replacement parts for the Magnum M series sod installer. A table of contents is placed at the beginning of the manual for location of specific parts. Keep this manual available for reference in the shop area.

At the time of publication all information contained in this manual was technically correct. However, all materials and specifications are subject to change without notice.

Comments and suggestions about this manual may be directed to: Bucyrus Equipment Co., Inc., PO Box 156-209 Main, Hillsdale, KS 66036. Phone 1-800-330-0857

© Copyright 2013 BECI. All information contained within this publication is based on the latest product information at the time of publication. Due to constant improvements in the design and quality of production components, some minor discrepancies may result between the actual vehicle and the information presented in this publication. Depictions and/or procedures in this publication are intended for reference use only. No liability can be accepted for omissions or inaccuracies. Any reprinting or reuse of the depictions and/or procedures contained within, whether whole or in part, is expressly prohibited. Printed in U.S.A.



## **TABLE OF CONTENTS**

<b>Section 1 .....</b>	<b>Brake / Wheel / Hub</b>
<b>Section 2 .....</b>	<b>Decals</b>
<b>Section 3 .....</b>	<b>Electrical</b>
<b>Section 4 .....</b>	<b>Engine</b>
<b>Section 5 .....</b>	<b>Front Spindle</b>
<b>Section 6 .....</b>	<b>Hydraulics</b>
<b>Section 7 .....</b>	<b>Hydrostat / Roll Lift Controls</b>
<b>Section 8 .....</b>	<b>Operator Platform</b>
<b>Section 9 .....</b>	<b>Roll Lift</b>
<b>Section 10 .....</b>	<b>Shields</b>
<b>Section 11 .....</b>	<b>Steering Axle</b>



## ROLL LIFT

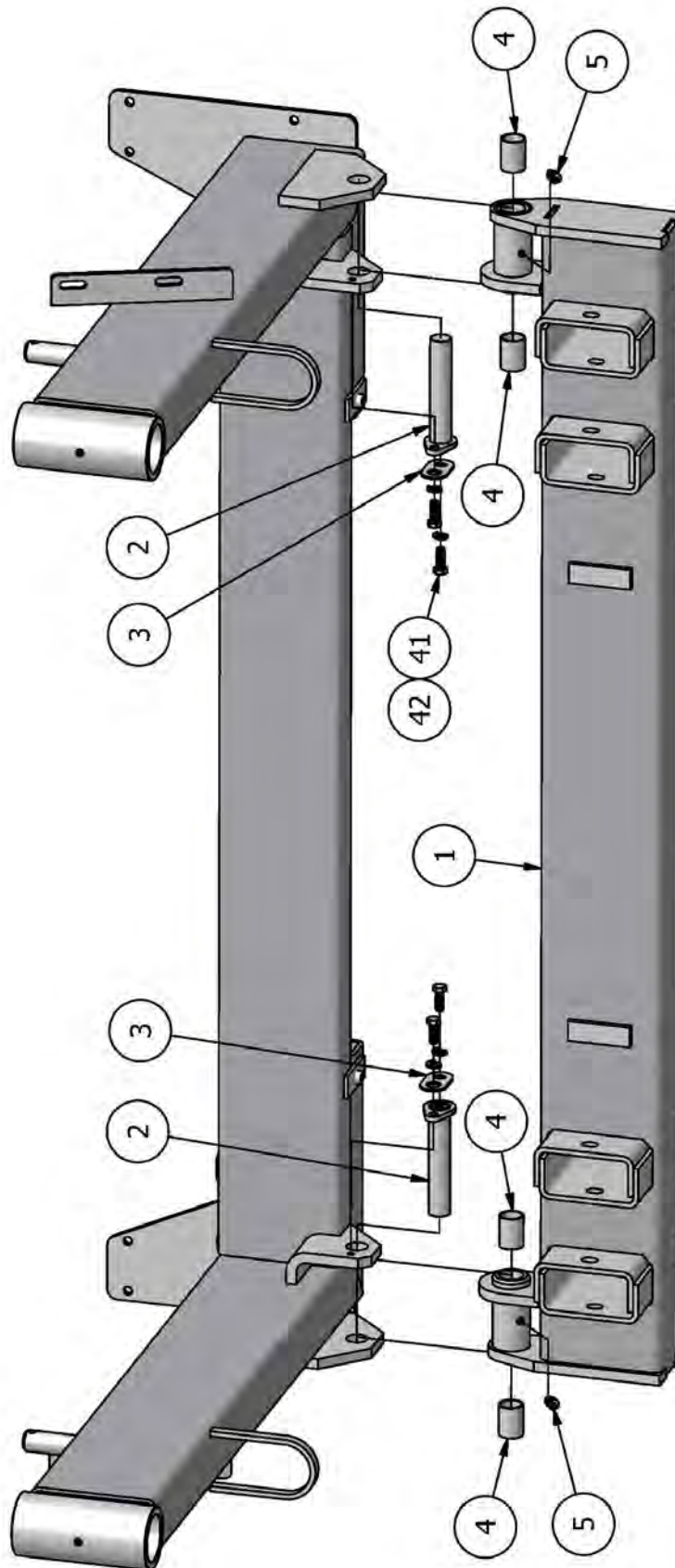
ROLL LIFT - PARTS LIST			
ITEM	QTY	PART NUMBER	DESCRIPTION
1	1	IN-RL100	ROLL LIFT, 42"
	1	48IN-RL100	ROLL LIFT, 48" (48" MODEL ONLY)
2	2	IN-RL110	ROLL LIFT PIVOT PIN
3	2	IN-RL203	ROLL LIFT PIN LOCKING TAB
4	4	016DXR024	METAL/POLYMER BEARING
5	2	60103	1/8" NPT GREASE FITTING, 45
6	1	IN-RL101R	CLAMP ARM, RIGHT
7	2	IN-RL104	CLAMP STINGER
8	2	0156788	3/4" X 2-3/4" CLEVIS PIN
9	4	020DXR016	METAL/POLYMER BEARING
10	2	IN-RL103	CLAMP
11	2	IN-RL300	CLAMP CYLINDER
12	2	60107	1/4"-28 GREASE FITTING, 90
13	2	IN-RL102	CLAMP PIVOT PIN
14	2	0156790	3/4" X 3-1/2" CLEVIS PIN
15	4	33426	3/4"-10 GA SHIM
16	1	IN-RL101L	CLAMP ARM, LEFT
17	2	IN-RL106	CLAMP ARM BAR MOUNT
18	1	IN-RL107	CLAMP ARM BAR, 42"
	1	48IN-RL101	CLAMP ARM BAR, 48" (48" MODEL ONLY)
19	2	0156783	5/8" X 3" CLEVIS PIN
20	2	1D155	1" X 3" CLEVIS PIN
21	2	9-7620-06	HYDAULIC CYLINDER
22	2	60105	1/4"-28 GREASE FITTING, ST
23	2	SC219-2	3/4" CLEVIS PIN, GREASABLE
24	4	33820	3/4" SAE WASHER
25	4	100075075	STEEL SPRING BUSHING
26	2	100075100	STEEL SPRING BUSHING
27	1	48IN-RL103L	CLAMP SPACER BLOCK MOUNT, LHS (48" MODEL ONLY)
28	2	48IN-RL102	CLAMP SPACER BLOCK (48" MODEL ONLY)
29	1	48IN-RL103R	CLAMP SPACER BLOCK MOUNT, RHS (48" MODEL ONLY)
30	1	IN-RL202	SOLID ARM BAR, 42"
	1	48IN-RL200	SOLID ARM BAR, 48" (48" MODEL ONLY)
31	1	IN-RL109	SOLID ARM, RIGHT
32	1	IN-RL108	SOLID ARM, LEFT
33	4	13220	1/2"-13 X 4-1/4" CAPSCREW PT
34	2	13217	1/2"-13 X 3-1/2" CAPSCREW PT
35	4	110120379	1/2"-13 X 1-1/4" CAPSCREW
36	8	33895	1/2" LOCK WASHER



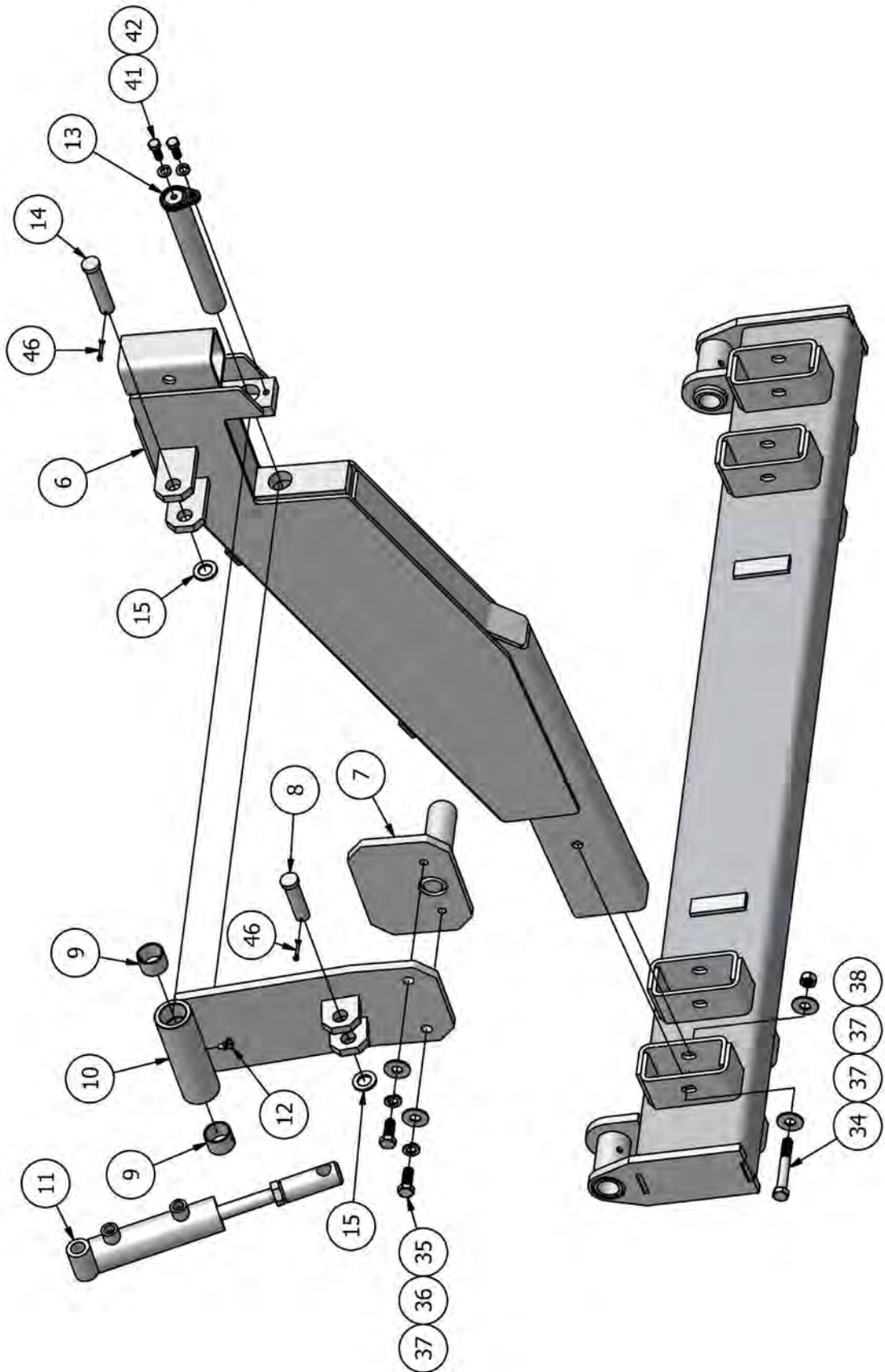
## ROLL LIFT

### ROLL LIFT - PARTS LIST

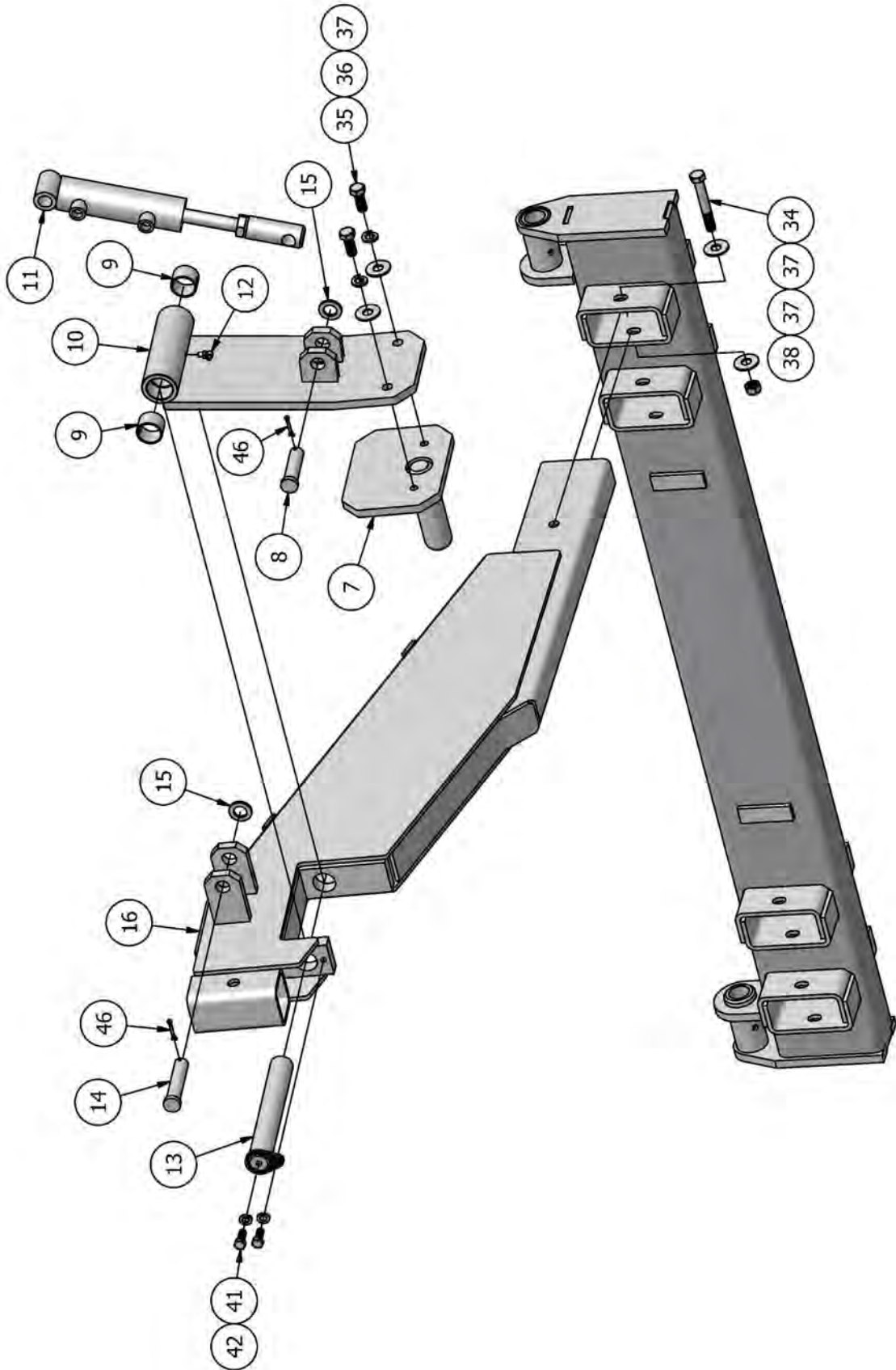
ITEM	QTY	PART NUMBER	DESCRIPTION
37	12	33861	1/2" FLAT WASHER
38	2	37268	1/2"-13 LOCKNUT
39	2	110120346	3/8"-16 X 1-1/2" CAPSCREW PT
40	2	13107	3/8"-16 X 1-1/4" CAPSCREW
41	8	13105	3/8"-16 X 1" CAPSCREW
42	12	33893	3/8" LOCK WASHER
43	4	33859	3/8" FLAT WASHER
44	4	36306	3/8"-16 HEX NUT
45	4	65127	3/16" COTTER PIN
46	6	65078	1/8" COTTER PIN



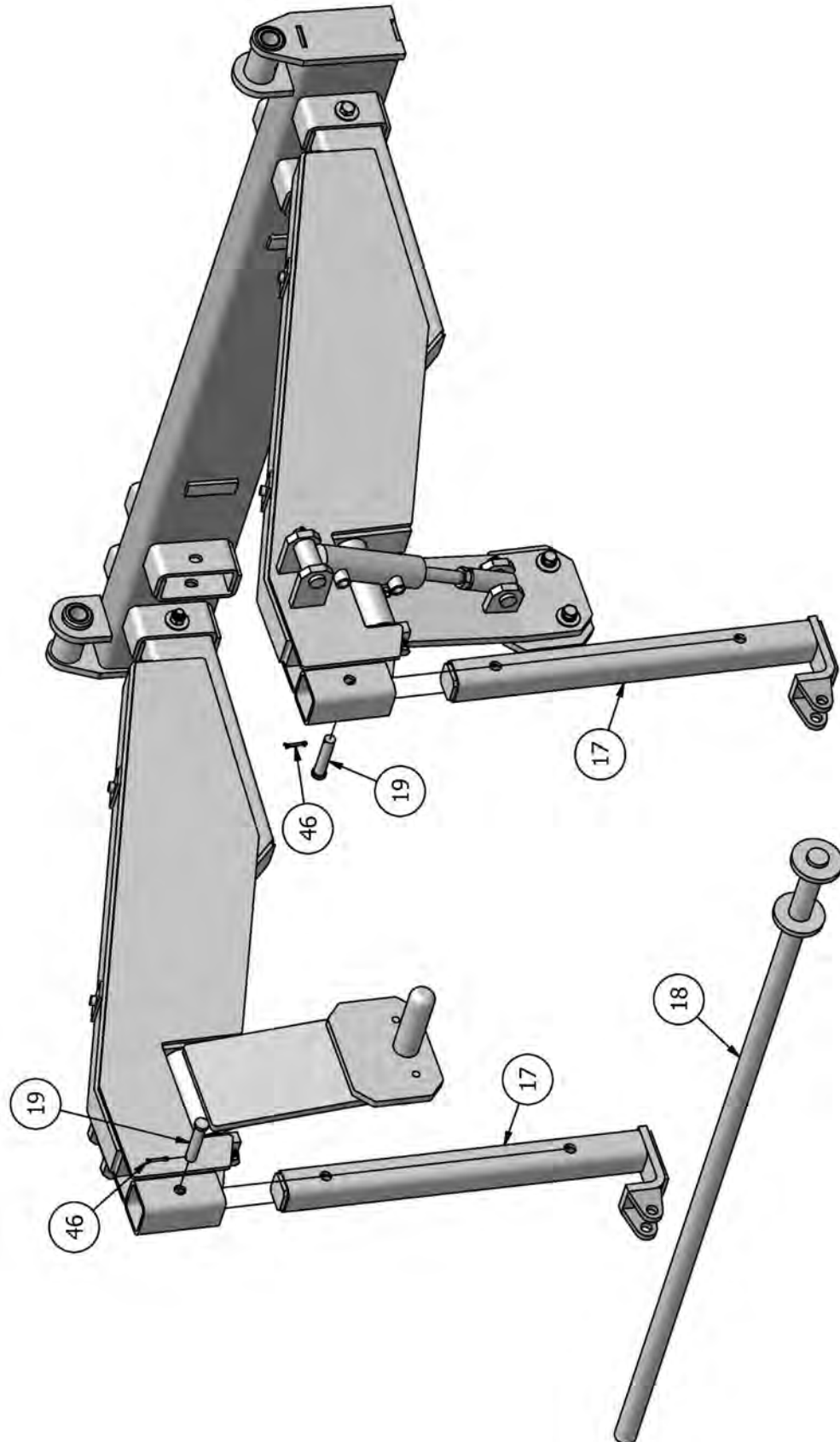


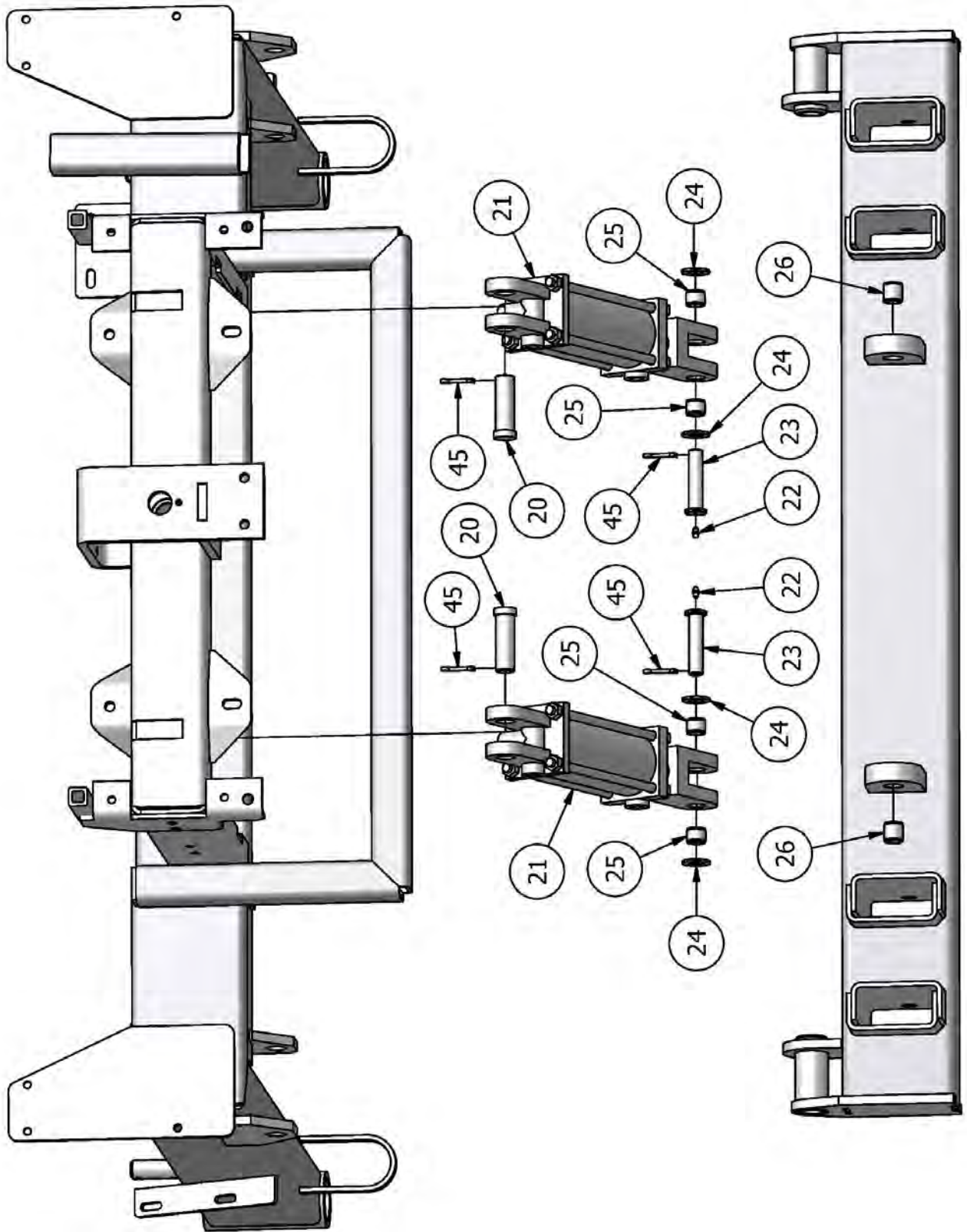


## ROLL LIFT

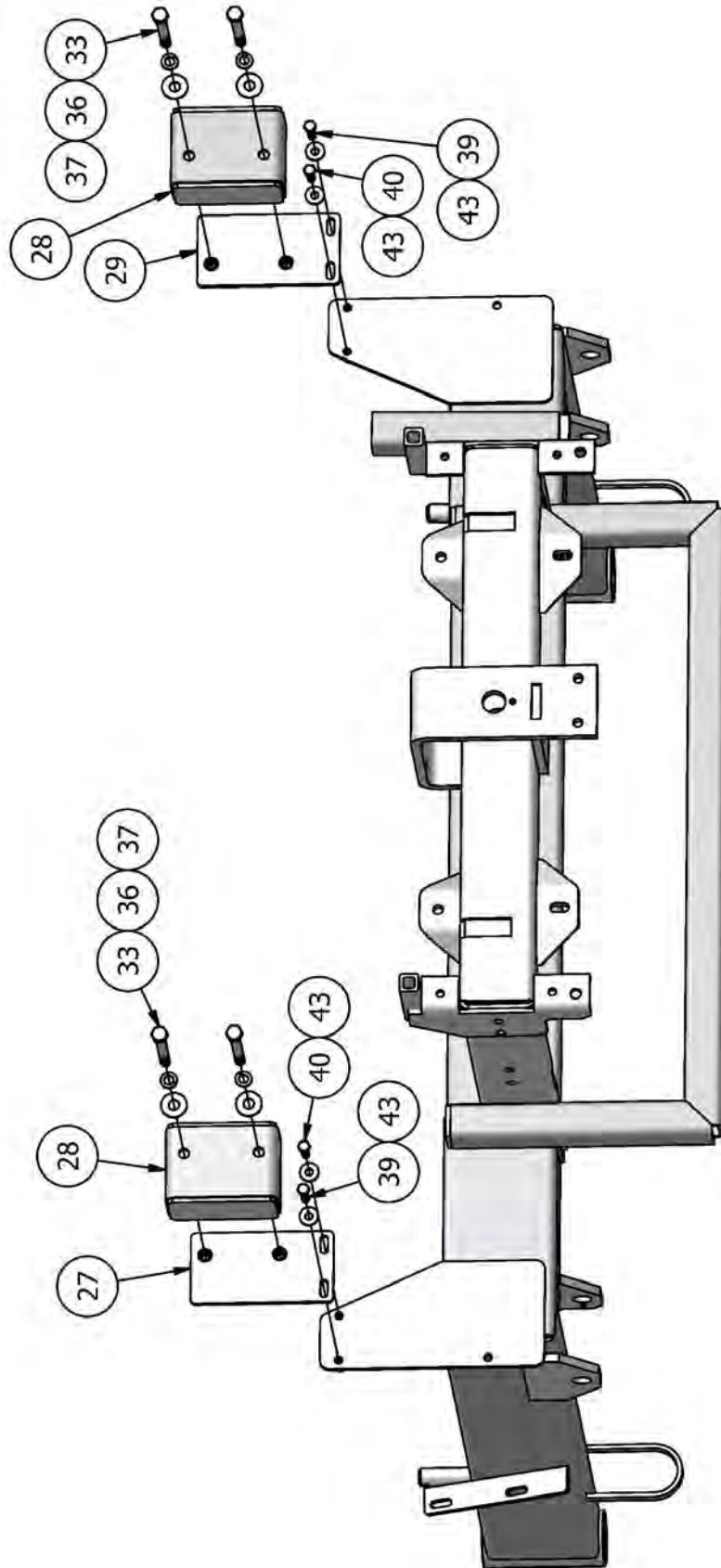


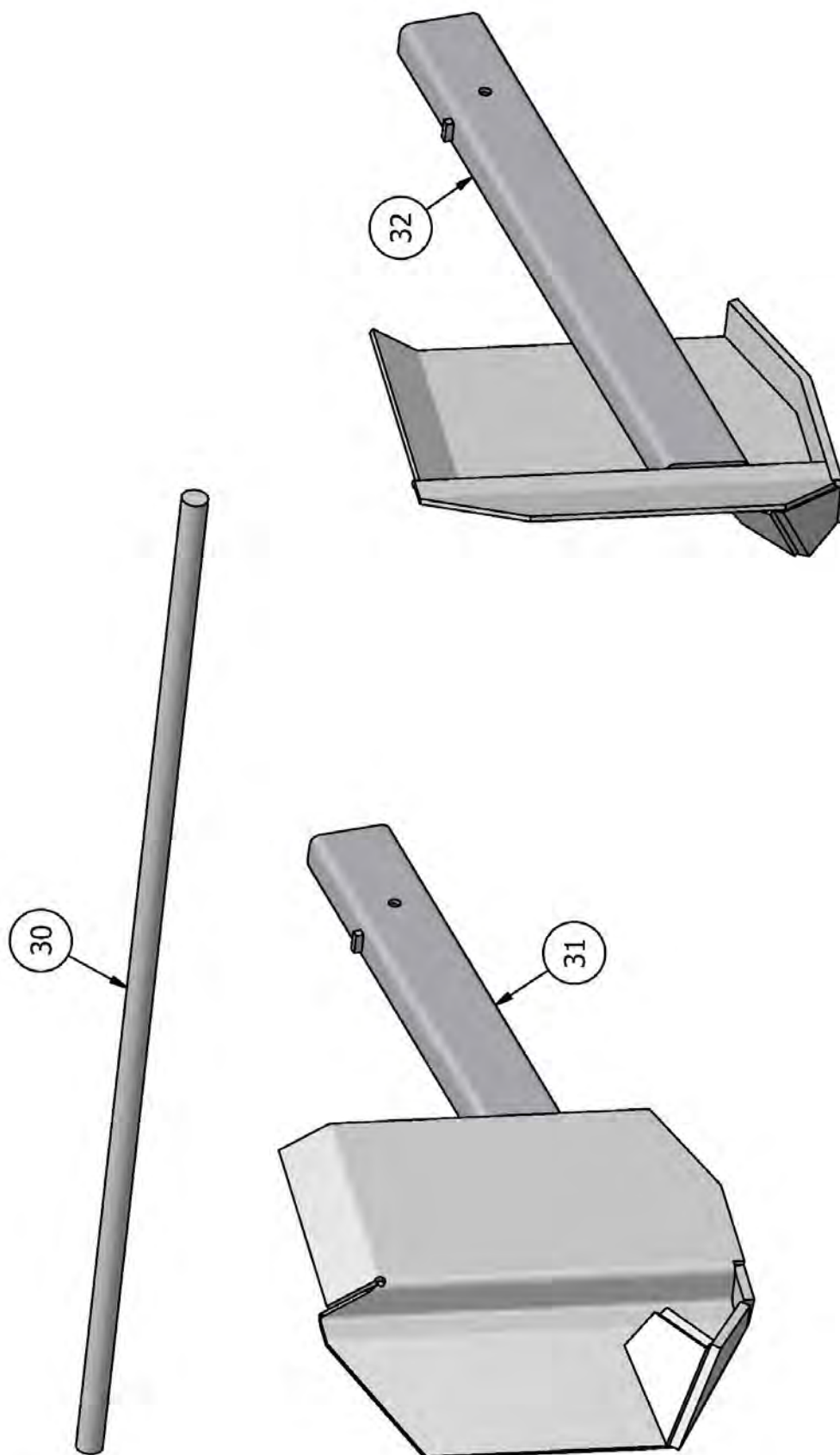
## ROLL LIFT











---

This image shows a full page of blank handwriting practice paper. It features multiple sets of horizontal lines. Each set consists of three lines: two solid black lines forming the top and bottom boundaries, and a dashed blue line positioned exactly halfway between them. These sets are repeated vertically down the entire page, providing a guide for letter height and placement. The background is white, and there are no margins or other markings present.

