

MAGNUM M SERIES DIESEL SOD INSTALLER PARTS MANUAL



**MAGNUM M4226D
MAGNUM M4826D**

Bucyrus Equipment Co., Inc.
Box 156, 209 Main
Hillsdale, Ks 66036
1-800-330-0857
www.magnumenp.com

RE-ORDER NUMBER: IND-MANUAL
REVISION: IN-100007



M SERIES

MAGNUM M4226D / M4826D PARTS MANUAL

The purpose of this manual is for parts identification of the Magnum M series sod installer. This manual is not to be used for assembly. This manual includes parts lists and illustrations of all available replacement parts for the Magnum M series sod installer. A table of contents is placed at the beginning of the manual for location of specific parts. Keep this manual available for reference in the shop area.

At the time of publication all information contained in this manual was technically correct. However, all materials and specifications are subject to change without notice.

Comments and suggestions about this manual may be directed to: Bucyrus Equipment Co., Inc., PO Box 156-209 Main, Hillsdale, KS 66036. Phone 1-800-330-0857

© Copyright 2013 BECI. All information contained within this publication is based on the latest product information at the time of publication. Due to constant improvements in the design and quality of production components, some minor discrepancies may result between the actual vehicle and the information presented in this publication. Depictions and/or procedures in this publication are intended for reference use only. No liability can be accepted for omissions or inaccuracies. Any reprinting or reuse of the depictions and/or procedures contained within, whether whole or in part, is expressly prohibited. Printed in U.S.A.

TABLE OF CONTENTS

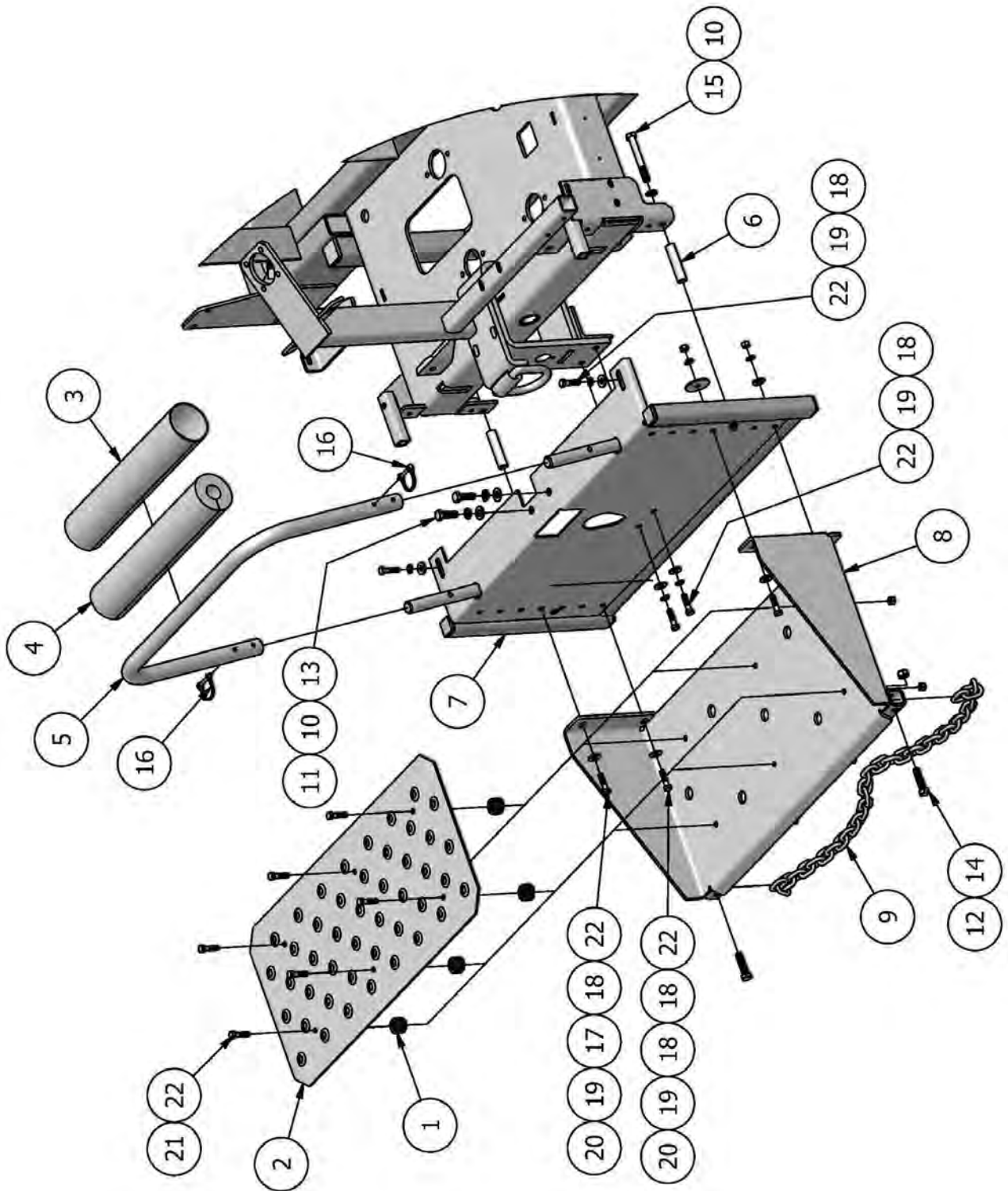
Section 1	Brake / Wheel / Hub
Section 2	Decals
Section 3	Electrical
Section 4	Engine
Section 5	Front Spindle
Section 6	Hydraulics
Section 7	Hydrostat / Roll Lift Controls
Section 8	Operator Platform
Section 9	Roll Lift
Section 10	Shields
Section 11	Steering Axle



OPERATOR'S PLATFORM

OPERATOR'S PLATFORM - PARTS LIST			
ITEM	QTY	PART NUMBER	DESCRIPTION
1	6	P1135	ISOLATOR
2	1	IND-OP200	OPERATOR PLATFORM PLATE
3	1	IN-OP402	OPERATOR PAD COVER
4	1	IN-OP401	OPERATOR PAD
5	1	IN-OP201	OPERATOR BRACE TUBE
6	2	IN-OP200	OPERATOR PLATFORM SPACER
7	1	IN-OP104	REAR AXLE COVER
8	1	IN-OP100	OPERATOR'S PLATFORM
9	1	IN-OP400	SAFETY LIFT CHAIN
10	4	33895	1/2" LOCK WASHER
11	2	33817	1/2" SAE WASHER
12	2	37268	1/2"-13 LOCKNUT
13	2	13209	1/2"-13 X 1-1/2" CAPSCREW PT
14	2	13211	1/2"-13 X 2" CAPSCREW
15	2	13219	1/2"-13 X 4" CAPSCREW PT
16	2	P7950	1/4" SNAP PIN
17	2	11103742	3/8" FENDER WASHER, 2" OD
18	10	33859	3/8" FLAT WASHER
19	8	33893	3/8" LOCK WASHER
20	4	36306	3/8"-16 HEX NUT
21	6	37264	3/8"-16 LOCKNUT
22	14	13109	3/8"-16 X 1-1/2" CAPSCREW PT





OPERATOR'S PLATFORM

NOTES:

[illegible]