

BLADE SERVICING

WARNING!

Always observe proper lock-out procedures when performing any maintenance work including changing or servicing the blades. Always remove and retain the ignition switch key, ensure parking brake is engaged, and block and or support machine using equipment designed for the task.

Be sure deck safety locks are engaged when working on decks in the raised position.

Use gloves when handling mower blades. Blades can be very sharp.

Inspect blades before each use to determine that they are mounted tightly and are in good condition. Replace any blade that is bent, excessively nicked, worn or has any other damage. Small nicks can be ground out when sharpening.

WARNING!

Use only original equipment blades when replacing worn or damaged mower blades. They are made of special steel alloys and subjected to rigid heat-treat and inspection requirements. Substitute blades may not meet these specifications and **MAY BE DANGEROUS.**

BLADE SELECTION

We offer four blade styles for use with this mower:

Fixed high lift

Combined with Progressive's high tip speed, the fixed High-Lift blade 'stands' grass blades up for a clean cut, even in damp conditions or at high mowing speeds.

Fixed low lift

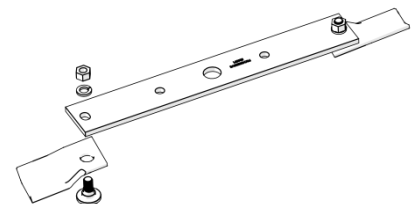
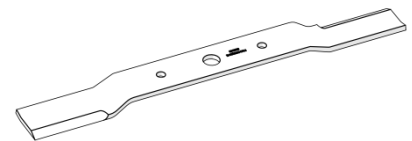
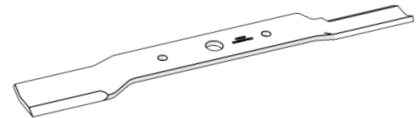
Developing less lift than the High-Lift blade, Progressive's Low-Lift fixed blade is ideal for both new growth or sandy soils where abrasion is a concern but superior cut quality can never be sacrificed. Also requires less tractor horse-power.

Pro-EZ Change System (Available in high or low lift)

Developed with turf professionals in mind:

- Economical as only the tips are changed
- Flat profile fastener extends life, reduces cost
- Standard hand-tools are used for reduced cost and easy change out
- Lower start-up torque requirement reduces stress on the complete drive train
- Thinner profile than a standard blade means the tips retain their sharpness after the equivalent number of mowing hours

Pro-Ez Change Blade System installs on the same blade support bar as a fixed blade. This allows users to easily swap blade types as growing conditions or mowing requirements change.



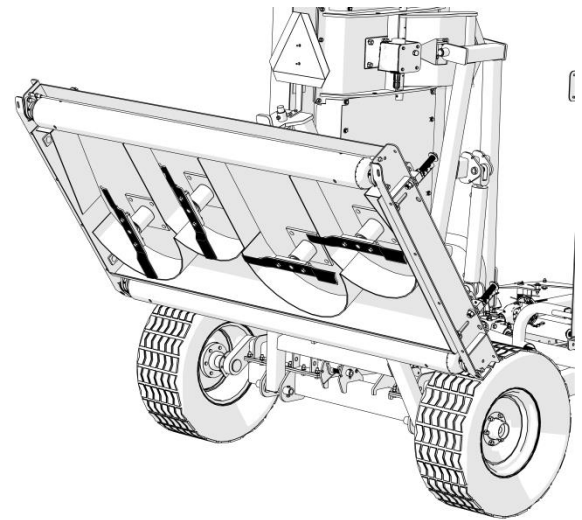
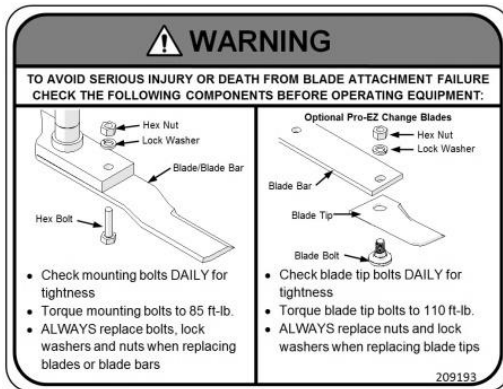
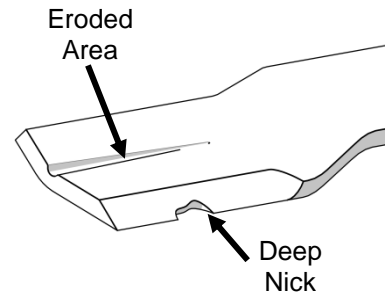
FIXED BLADE REMOVAL AND INSTALLATION

A 1" diameter pilot centers the blade on the spindle with two 1/2" grade 5 fasteners. When changing blades, be sure that pilot is properly seated in the blade and the blade lies flat on the spindle bar.

Always replace bolts, lock washers and nuts when replacing blades. Tighten bolts to proper torque as listed on Page 38.

Replace any blade that is bent, nicked deeper than 1/4", excessively worn or has any other damage. Small nicks can be ground out during sharpening. Always balance blades before use.

In abrasive soil conditions, monitor condition of the blade wing. If erosion of the steel is evident at the base of the wing, replace blade.



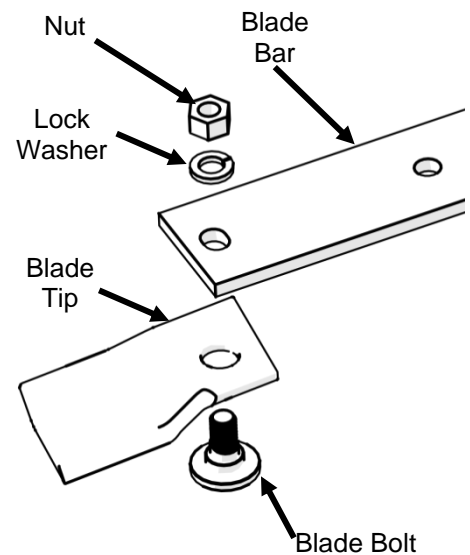
Pro-EZ CHANGE BLADE REMOVAL AND INSTALLATION

Blade Bar

A 1" diameter pilot centers the blade bar on the spindle with two 1/2" grade 5 fasteners. When changing blades, be sure that pilot is properly seated in the blade bar and the blade bar lies flat on the spindle.

Always replace bolts, lock washers and nuts when replacing blade bars. Tighten bolts to proper torque as listed on Page 38.

Replace any blade bar that is bent, worn or has any other damage.



Blade Tip

The Pro-EZ change blade tips are serviceable with a single wrench. An anti-rotation slot engaging the blade bolt to the blade bar allows for installation and removal of the nut from one side without having to hold the bolt.

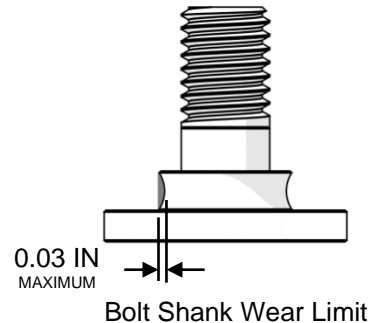
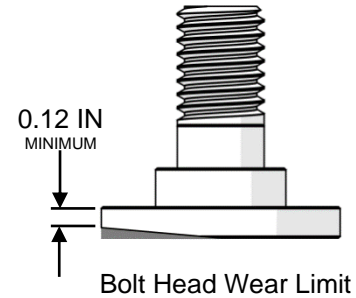
When removing blade tips, inspect the tips and blade bolts for wear and damage.

Replace any tip that is bent, nicked deeper than $\frac{1}{4}$ ", excessively worn or has any other damage. Small nicks can be ground out during sharpening. Always balance Pro-EZ blades as an assembled unit.

Replace any blade bolts that have the head or blade shank worn beyond the limits shown in the accompanying illustrations.

Always install new blade bolts, lock washers and nuts when installing new blade tips. Tighten bolts to proper torque as listed on Page 38. **DO NOT OPERATE WITH ONLY ONE BLADE TIP INSTALLED.**

Grass build-up between the tip and blade bar may prevent the tip from pivoting properly at start-up or during mowing. Ensure all tips are free to rotate prior to operation.



BLADE SHARPENING



Use gloves when handling mower blades. Blades can be very sharp.

When sharpening blades, be sure material removed is equal on both sides of the blade. Unbalanced blades will cause excessive vibration leading to cracks in machine components.

- Clean all material from the blade prior to sharpening and balancing.
- Grind or file blades following original pattern as shown.
- Sharpen to a razor edge. Do not sharpen back side of blade.

Use the supplied cone balancer (pn 209000) to verify blade balance. When the blade is correctly balanced, the blade will remain horizontal.



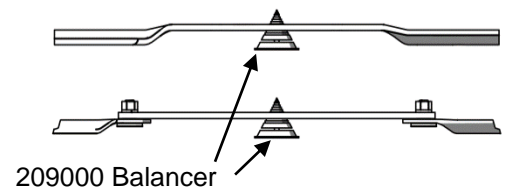
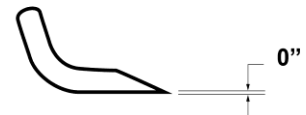
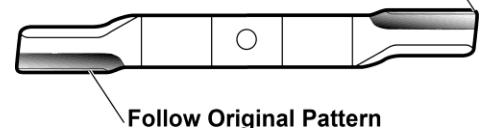
Failure to properly balance blades after sharpening can cause vibration leading to premature component damage. Pro-EZ Change blades must be balanced as a complete assembly (blade bar, blade tips & blade tip hardware).



Wear appropriate eye and face protection when sharpening blades.



Maintain Corners



SPINDLE SERVICE

Each spindle is supported by two ball bearings. No adjustment of clearance is required. Running clearance is pre-set during assembly by tightening the 1" NF left hand nut on top of the pulley.

Periodically inspect blade spindles by grasping pulley, and moving from side to side. If any free play is noted, replace or repair.

SPINDLE ASSEMBLY REMOVAL

- 17) With the mower decks in the transport position, remove the blade.
 - 1) Lower decks to mowing position.
 - 2) Relieve belt tension and remove belt from the spindle pulley.
 - 3) Place a piece of cardboard or other soft material on the ground beneath the spindle to be removed.
 - 4) From above the deck, loosen & remove the four nuts that hold the spindle assembly to the deck. The spindle assembly will drop on to the ground.
 - 5) Remove the complete spindle assembly from beneath the deck.

SPINDLE ASSEMBLY INSTALLATION

Reverse above procedure. Be sure spindle mounting area of deck is clean of any foreign material before attaching spindle assembly.



Never direct high pressure water spray at the blade spindles (top or bottom). Water may enter the bearings, compromise lubrication and lead to premature failure.



SPINDLE ASSEMBLY REPAIR

Note: A video showing this rebuild procedure is available on our website: <http://www.progressiveturfequip.com/service>

CAUTION!

Spindle repair requires special skills and tools, a shop press is required. If your shop is not properly equipped or your mechanics are not properly trained in this type of repair, complete spindle assemblies are available as service parts.

- 18) Remove LH Nut (1), lock washer (2), pulley (3), and spacer (5) from spindle assembly. **The spindle nut is left-hand thread.**

CAUTION!

Make sure that the press ram and bed 100% square to each other. If bearings are not square in housing, bearings will wear out prematurely.

- 19) Place assembly in shop press with support under spindle housing flange and press spindle down through housing.

- 20) Remove bottom bearing from spindle and top bearing from housing

IMPORTANT! Removing bearings from spindle / housing causes permanent damage to the bearings. New bearing must be used in re-assembling the spindle.

- 21) Inspect bearing (8) spacer for wear. If any wear is present, replace spacer with new.

IMPORTANT! Failure to replace a worn or damaged spacer will lead to premature top bearing wear.

- 22) Place housing (7) in press (upside down). **Pressing on outer race**; install bottom bearing (9) into housing.

- 23) Place spindle (12) in press. Place dirt shield (11) and shim (10) on spindle.

- 24) **Pressing on inner race** of bottom bearing, press housing / bearing on to spindle. A steel tube will be required to slide over the spindle and press on inner race.

- 25) Install bearing spacer (8) with hole end up.

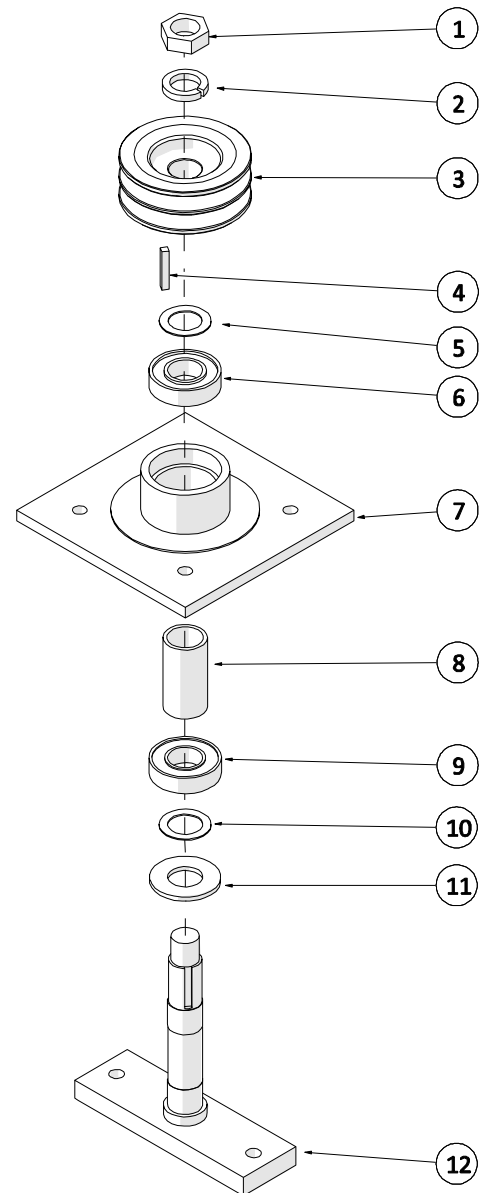
- 26) Set top bearing (6) on to spindle. **Pressing on inner race**, press top bearing on to spindle (may be a loose fit in housing).

- 27) Install shim washer (5), key (4) and pulley (3) on to spindle.

- 28) Install lock washer (2) and nut (1) and torque to 60 ft-lb.

Rotate the housing six revolutions by hand to check for free movement.

The assembly is now ready for installation into the mower deck.



HYDRAULICS

WARNING!

Do not use your hand to check for hydraulic oil leaks. Use a piece of cardboard instead.

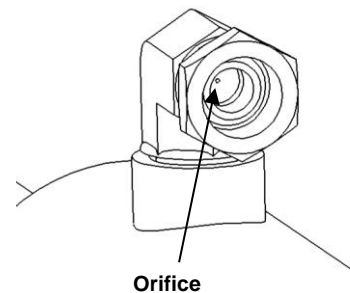
Hydraulic fluid escaping under pressure can penetrate the skin causing serious injury. If skin penetration occurs, seek medical attention immediately.

Relieve all pressure from hydraulic system before disconnecting hoses.

During your daily inspection repair all leaks before they create a major problem. Relieve all pressure before working on, or disconnecting the line in the hydraulic system.

The hydraulic system on the TDR-26 mower is a simple cylinder system used to raise and lower the cutting decks into position. Each cylinder is equipped with a .032 diameter restrictor orifice in the rod-end elbow adapter to throttle the speed of travel.

When reconnecting to the tractor, be sure that both connector ends are clean. Dirt in the hydraulic system can block the orifice in the line throttle valve or cause premature wear & failure of hydraulic components on the mower or tractor.



SUPPORTING MACHINE FOR SERVICE

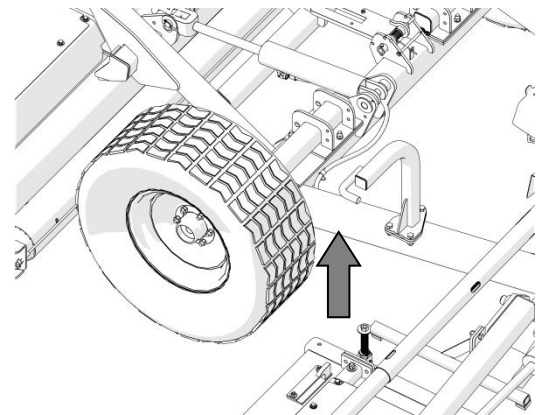
(2) Points are available to lift the mower off of the ground for servicing the transport tires / wheels / bearings at the main frame rail just in front of the transport tires (as shown in the accompanying illustration.) Use a bottle or service jack to raise the wheel from the ground and place a jack stand, wooden block or other suitable support under the rectangular tube.

WARNING!

Do not support the machine on cinder blocks, hollow tiles or other members that may fail under continuous load.

Never perform service on a machine that is supported solely by a jack. Always ensure proper blocking is placed to support load during service.

If the transport tires must be changed with the wings in the raised position, ensure the machine is on a flat, level surface and the wing locks are fully engaged before attempting to lift the machine.

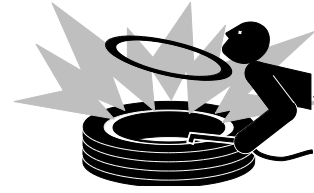


TRANSPORT TIRES

Inspect tires daily for wear or damage. Check tire pressures weekly with an accurate pressure gauge. Do not inflate tires beyond 35 psi.

WARNING!

Mounting and dismounting tires from rims can be dangerous and should be performed by trained personnel using correct tools, equipment and procedures.



LONG-TERM STORAGE

If the mower is not to be used for an extended period of time (4 months or longer) it is recommended that the following maintenance steps are followed:

- 1) Thoroughly wash mower, removing all grass clipping residue from deck undersides & mower framework. Ensure deck drain holes are free from debris.
- 2) Add grease to all grease points.
- 3) Check gearbox oil for proper level.
- 4) Relieve tension on all V-belts.
- 5) Inspect all drive belts & pulleys.
- 6) Inspect all blade spindle bearings for excessive play and smooth operation.
- 7) Inspect all blades for serviceable condition.

When returning the mower to service after long-term storage:

- 1) Check tightness of all blade fasteners.
- 2) Add grease to all grease points.
- 3) Set tension on all V-belts.
- 4) Ensure all pivot points move freely.
- 5) Change gearbox oil.

TROUBLESHOOTING

PROBLEM	CAUSE	REMEDY
Uneven Cutting	Improper Height Setting	Ensure that cutting height is set properly at all 4 corners of each deck (Page 29)
	Damaged Blades	Inspect blades for damage, replace as required
Belt slippage / Squeal	Lack of tension	Inspect & adjust tension as required (Page 37)
	Over Loading	Increase cutting height or reduce ground speed
Rapid belt wear	Belt slippage	See Above
	Belt not aligned properly	Check belt alignment. Ensure belts are running in proper groove on pulley.
	Over heating	Ensure decks are free from clipping build-up
Over-heated bearings	Belt slippage	See Above
	Insufficient Cooling	Ensure decks are free from clipping build-up
Premature spindle bearing failure	Over-heating	See Above
	Improper rebuild procedure	See specific instructions in manual (Page 42)
	Improper bearings	Use only OEM bearings
	Water Ingress	-Avoid direct spray on bearing during washing -Ensure drain holes on decks are not clogged
Deck safety locks will not engage	Wing not raising fully to release lock	Decrease center distance (retracted length) of cylinder with adjustable clevis on cylinder rod
	Binding in lock mechanism	Check all lock pivots to ensure free operation. Clean and lubricate as required.
Mower Deck will not lower.	Orifice in cylinder plugged	Remove orifice and remove obstruction and reassemble (Page 44)
Vibration on turning	Drawbar length incorrect.	Adjust drawbar to specification (see Page 22)
Damaged intermediate bearing or tractor PTO shaft	Input shaft does not collapse easily under power	Remove input shaft, pull apart and deburr / grease splines (Page 32) Grease at proper interval

NOTES

[illegible]

Parts List

TDR-26



Effective serial number:
1826101 and up.

P.N. 120593

Issue Date: August, 2022

 **DANGER!**

Si No Lee Ingles, Pida Ayuda a Alguien Que Se Lo Lea
Para Que le Traduzca Las Medidas de Seguridad

Table of Contents

SERIAL NUMBER LOCATION.....	I
1 DECK ASSEMBLY	ERROR! BOOKMARK NOT DEFINED.
1.1 BLADE SPINDLE ASSEMBLY.....	1
1.2 BLADE OPTIONS	2
1.3 WING DECK GEAR BOX MOUNT	3
1.4 REAR DECK GEAR BOX MOUNT ASSEMBLY	4
1.5 WING DECK ASSEMBLY	5
1.6 WING DECK SHIELDS	6
1.7 WING DECK DRIVE.....	7
1.8 REAR DECK ASSEMBLY	8
1.9 REAR DECK SHIELDS	9
1.10 REAR DECK DRIVE.....	10
2 FRAME ASSEMBLY	11
2.1 FRAME ASSEMBLY.....	11
2.2 WING LOCKS.....	12
2.3 WING ASSEMBLY	13
2.4 REAR LIFT ASSEMBLY	14
2.5 WHEEL ASSEMBLIES	15
3 HYDRAULICS	16
3.1 HYDRAULICS - SERIAL NUMBERS: UP TO 2026151.....	16
3.2 HYDRAULICS - SERIAL NUMBERS: 2026152 AND ABOVE	17
4 DRIVELINE.....	18
4.1 DRIVELINE	18
4.2 DECK PTO SHAFT	19
4.3 INTERMEDIATE PTO SHAFT.....	20
4.4 INPUT PTO SHAFT	21
4.5 DECK GEARBOX - OPTION #1 - 521432	22
4.6 DECK GEARBOX - OPTION #2 - 215180	23
4.7 4-WAY GEAR BOX – OPTION#1 – 521497	24
4.8 4-WAY GEAR BOX – OPTION#2 - 215150	25
5 DECALS	26
5.1 SAFETY	26
5.2 NOTES	28

Serial Number Location

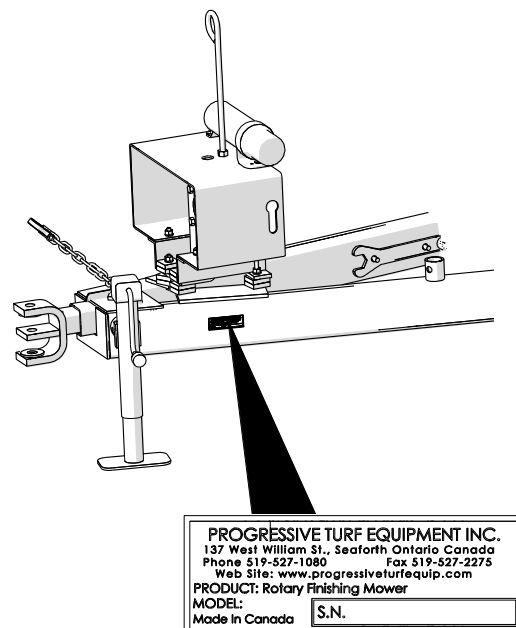
The serial number plate for the machine is located on the left side of the main frame tube at the front of the machine.

For quick reference, record the following information:

Model: _____

Serial Number: _____

Date purchased: _____



Always state this information when contacting your selling dealer and when ordering spare parts.

Parts Information

Use only Genuine Original Equipment Manufacturers (O.E.M.) replacement parts. The use of "will fit" parts may reduce machine performance, void machine warranties and present a safety hazard. Use Genuine OEM parts.

Progressive Turf Equipment Inc.

137 West William Street
Seaforth, Ontario
Canada
N0K 1W0

Phone: 800-668-8873

Fax: 519-527-2275

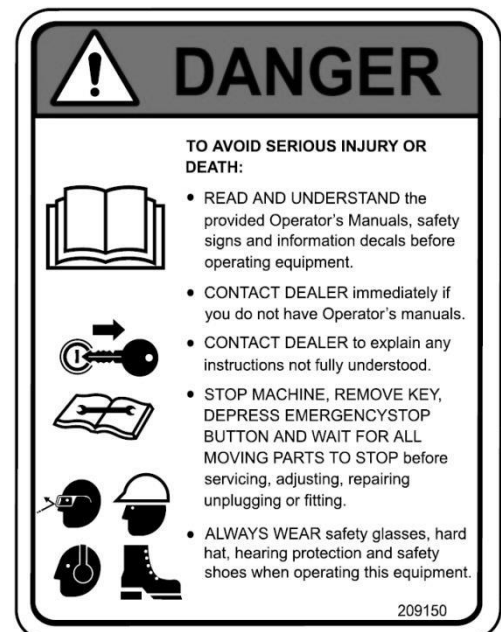
www.progressiveturfequip.com

Maintenance

Maintenance should always be performed by a qualified service technician familiar with servicing similar equipment, using good safety and workmanship practices.

Always observe proper lock-out procedures when performing any maintenance work. Other than maintaining the blade spindles or blades, always lower all decks before performing maintenance. Block and or support machine using equipment designed for the task. When maintaining blades or spindles, always ensure locks are seated correctly in place. When performing hydraulic maintenance, ensure that pressure has been released.

It is imperative that the operator or qualified service technician reads and understands all the safety information in the Operator's Manual before proceeding. Failure to follow the instructions or heed the warnings could result in injury or death. **Proper care is your responsibility.**



PARTS ORDERING GUIDE

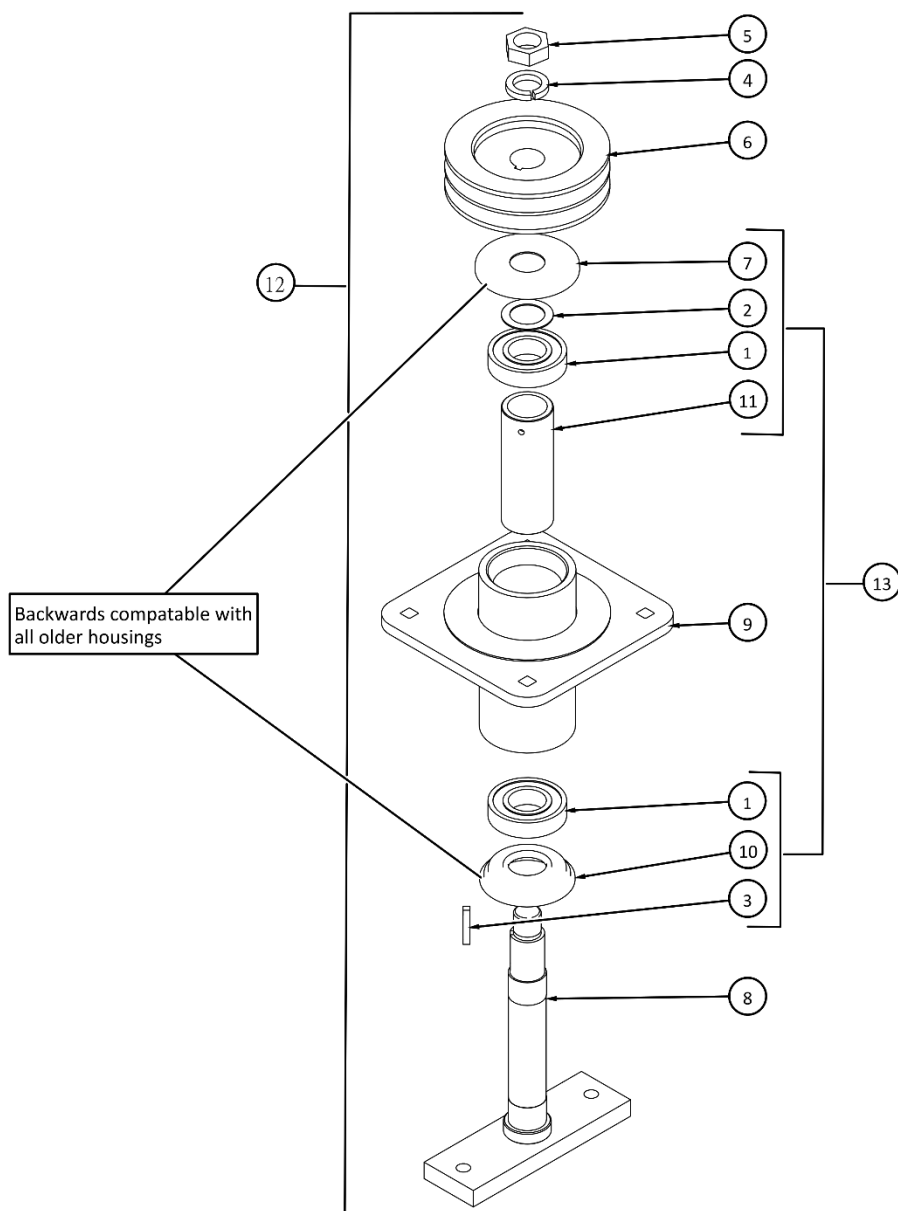
The following instructions are offered to help eliminate needless delay and error in processing purchase orders for the equipment in this manual.

1. The Parts Section is prepared in logical sequence and grouping of parts that belong to the basic machine featured in this manual. Part Numbers and Descriptions are given to help locate the parts and quantities required.
2. The Purchase Order must indicate the Name and Address of the person or organization ordering the parts, who should be charged, and if possible the serial number of the machine for which the parts are being ordered.
3. The purchase order must clearly list the quantity of each part, the complete and correct part number, and the basic name of the part.
4. The manufacturer reserves the right to substitute parts where applicable.
5. Some parts may be unlisted items which are special production items not normally stocked and are subject to special handling. Request a quotation for such parts before sending purchase order.
6. The manufacturer reserves the right to change prices without notice.



1 DECK ASSEMBLY

1.1 Blade Spindle Assembly

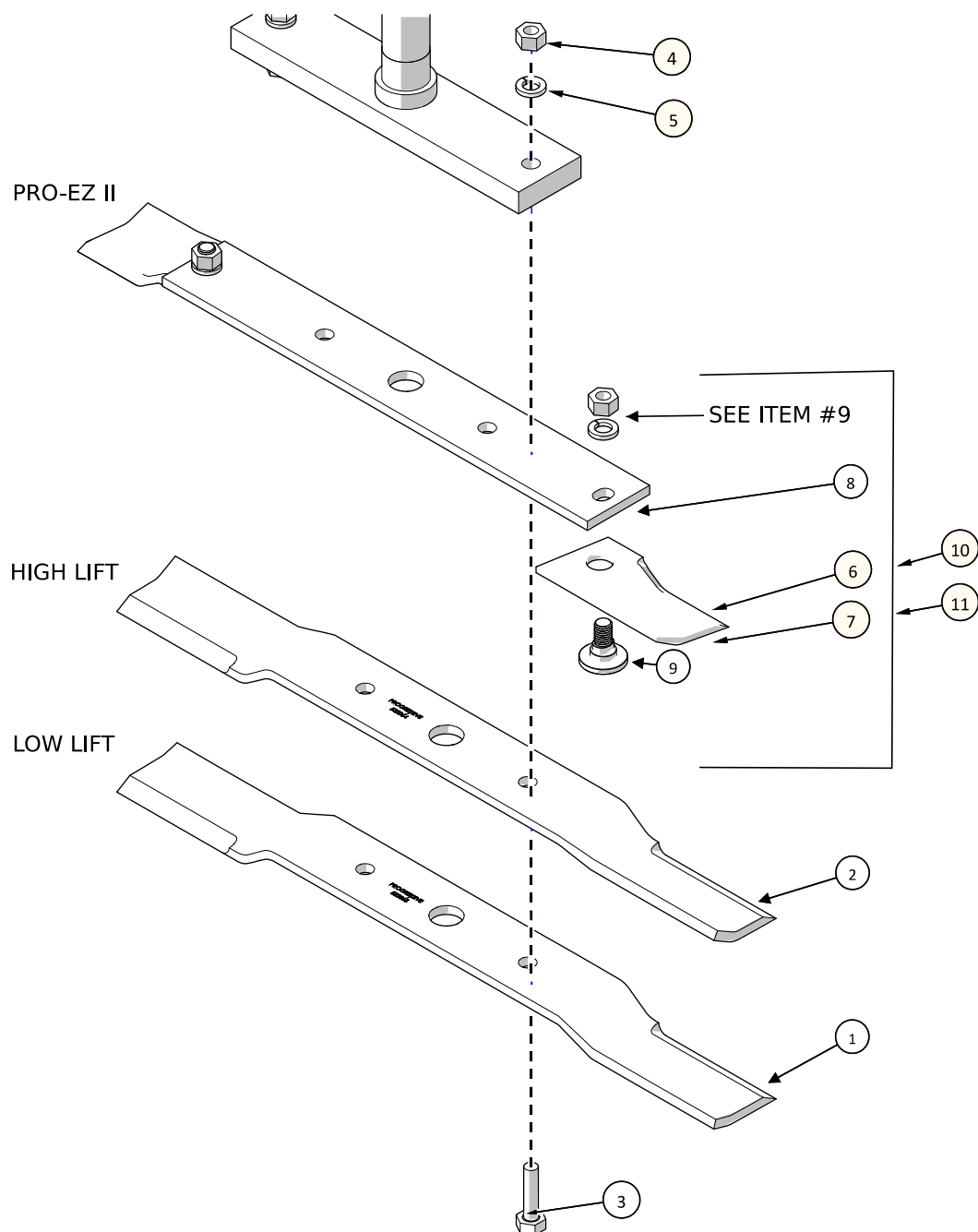


ITEM	PART #	DESCRIPTION	QTY
1	213052	BEARING - MAINTENANCE FREE	2
2	521004	SHIM WASHER - 1.25 (9 PCS)	1
3	O.L.	KEY - 1/4" X 1.50"	1
4	521002	LOCKWASHER L.H. (3 PCS)	1
5	521003	HEX NUT- L.H.	1
6	521775	5.9" PULLEY- 1-1/4" BORE	1
7	522557	SHIELD - SPINDLE TOP	1

ITEM	PART #	DESCRIPTION	QTY
8	522586	BLADE SPINDLE WELD- TDR-22	1
9	527552	SPINDLE HOUSING - TDR-22	1
10	527550	HOUSING BOTTOM CAP	1
11	526096	BEARING SPACER TUBE - TDR 22	1
12	527562	BLADE SPINDLE ASSY COMPLETE - TDR-22	1
13	527563	SPINDLE REBULD KIT MFREE TDR22	1

O.L. - OBTAIN LOCALLY

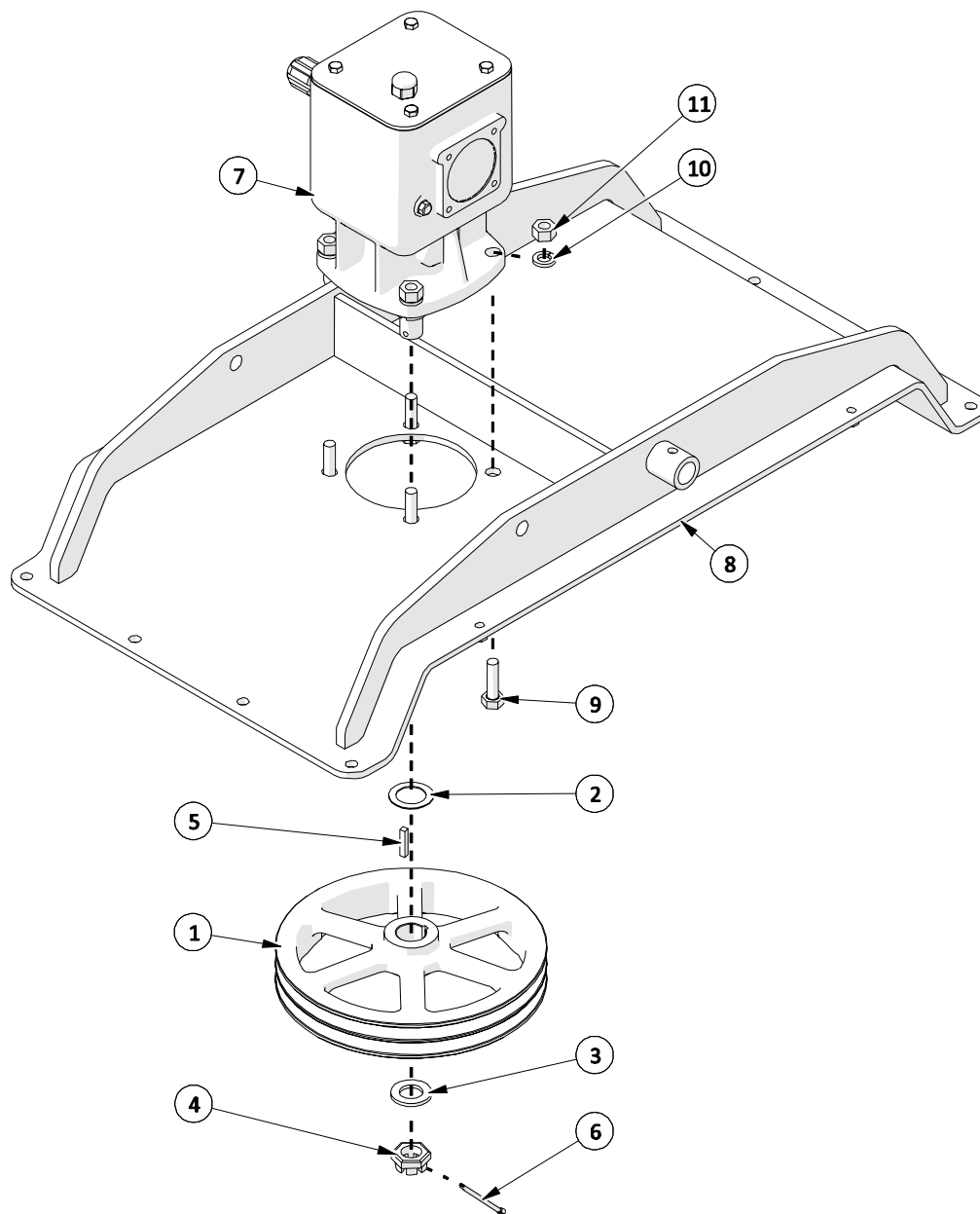
1.2 Blade Options



ITEM	PART #	DESCRIPTION	QTY
1	522618	LOW LIFT BLADE KIT (6 PCS)	1
2	522610	HIGH LIFT BLADE KIT (6 PCS)	1
3	O.L.	HEX BOLT- 1/2" X 1.75 NC GR5 PL	2
4	O.L.	HEX NUT - 1/2"NC GR5 PL	4
5	O.L.	LOCK WASHER- 1/2 PL	4
6	526594	HIGH LIFT TIP KIT (50 PC)	1
7	526648	LOW LIFT TIP KIT (50 PC)	1
8	526784	BLADE BAR KIT (12 PCS)	1
9	526866	BLADE BOLT KIT W/HW (25 PC)	1
10	526790	SINGLE HIGH LIFT BLADE ASSEMBLY (FOR 1 SPINDLE)	1
11	526792	SINGLE LOW LIFT BLADE ASSEMBLY (FOR 1 SPINDLE)	1

O.L. - OBTAIN LOCALLY

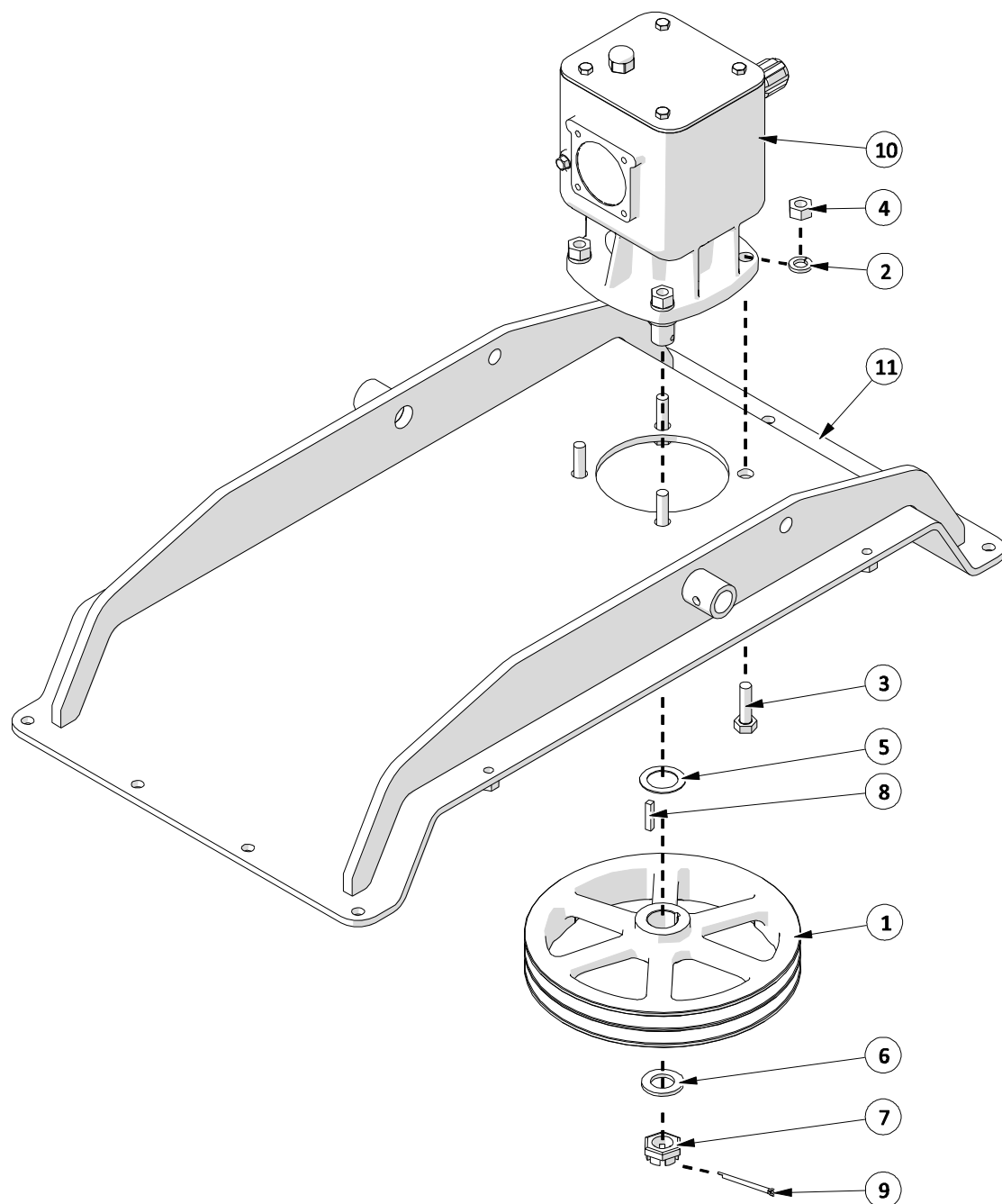
1.3 Wing Deck Gear Box Mount



ITEM	PART #	DESCRIPTION	QTY
1	212021	PULLEY - 11-1/4"	1
2	521004	SHIM WASHER KIT (9 PCS)	1
3	521129	WASHER (3PCS)	1
4	521130	CASTLE NUT - M24	1
5	521390	DECK GEARBOX KEY (3 PCS)	1
6	O.L.	3/16 X 1-1/2" COTTER PIN	1
7	521432	DECK GEARBOX	1
8	526696	GEAR BOX MOUNT - WING	1
9	O.L.	HEX BOLT- 5/8 X 1.75 NC GR5 PL	4
10	O.L.	LOCK WASHER- 5/8 PL	4
11	O.L.	HEX NUT - 5/8NC GR5 PL	4

O.L. - OBTAIN LOCALLY

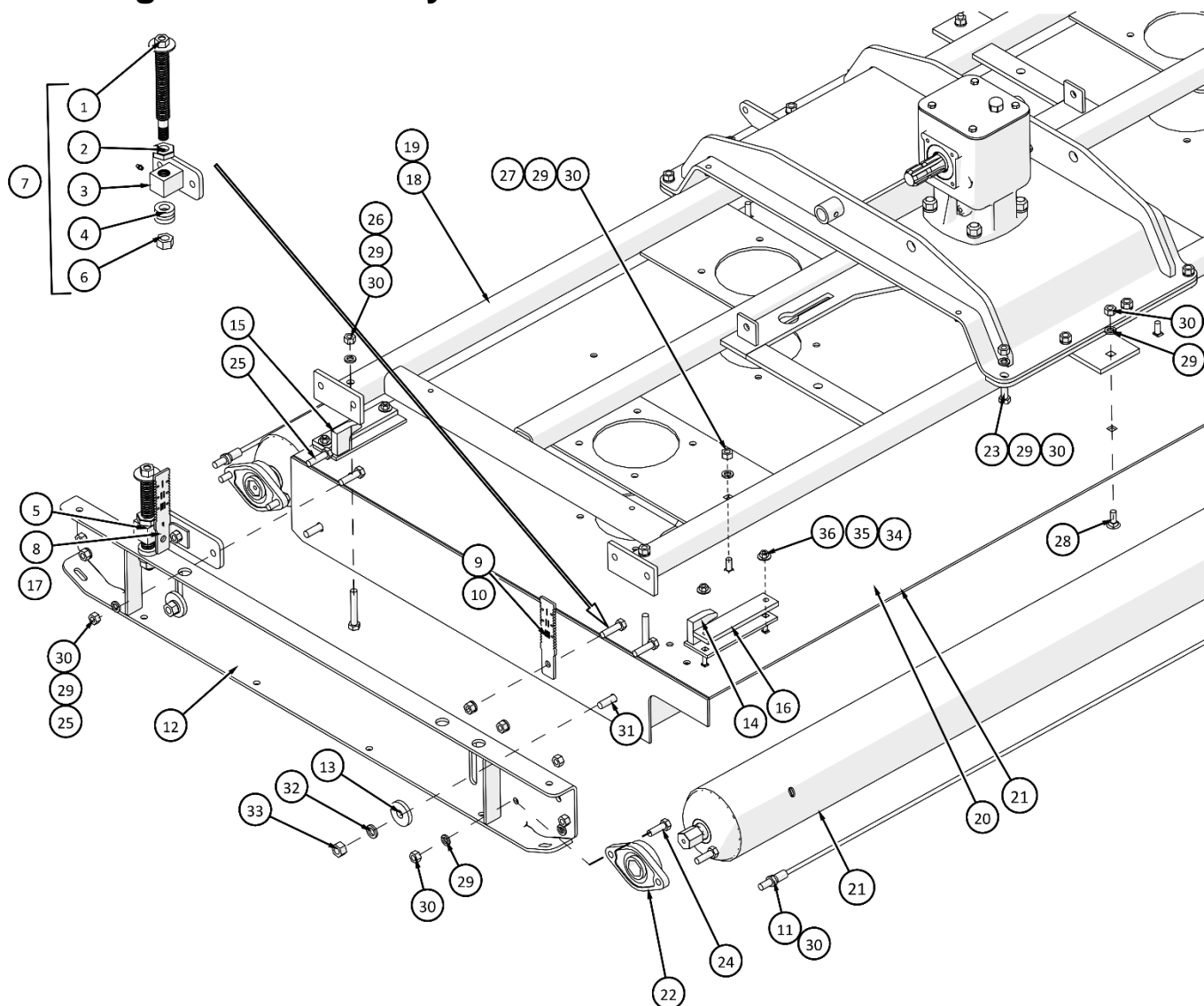
1.4 Rear Deck Gear Box Mount Assembly



ITEM	PART #	DESCRIPTION	QTY
1	212021	PULLEY - 11-1/4"	1
2	O.L.	LOCK WASHER- 5/8 PL	4
3	O.L.	HEX BOLT- 5/8 X 1.75 NC GR5 PL	4
4	O.L.	HEX NUT - 5/8NC GR5 PL	4
5	521004	SHIM WASHER (9 PCS)	1
6	521129	WASHER KIT (3PCS)	1
7	521130	CASTLE NUT - M24	1
8	521390	DECK GEARBOX KEY (3 PCS)	1
9	O.L.	3/16 X 1-1/2" COTTER PIN	1
10	521432	DECK GEARBOX	1
11	526714	GEAR BOX MOUNT - REAR DECK	1

O.L. - OBTAIN LOCALLY

1.5 Wing Deck Assembly

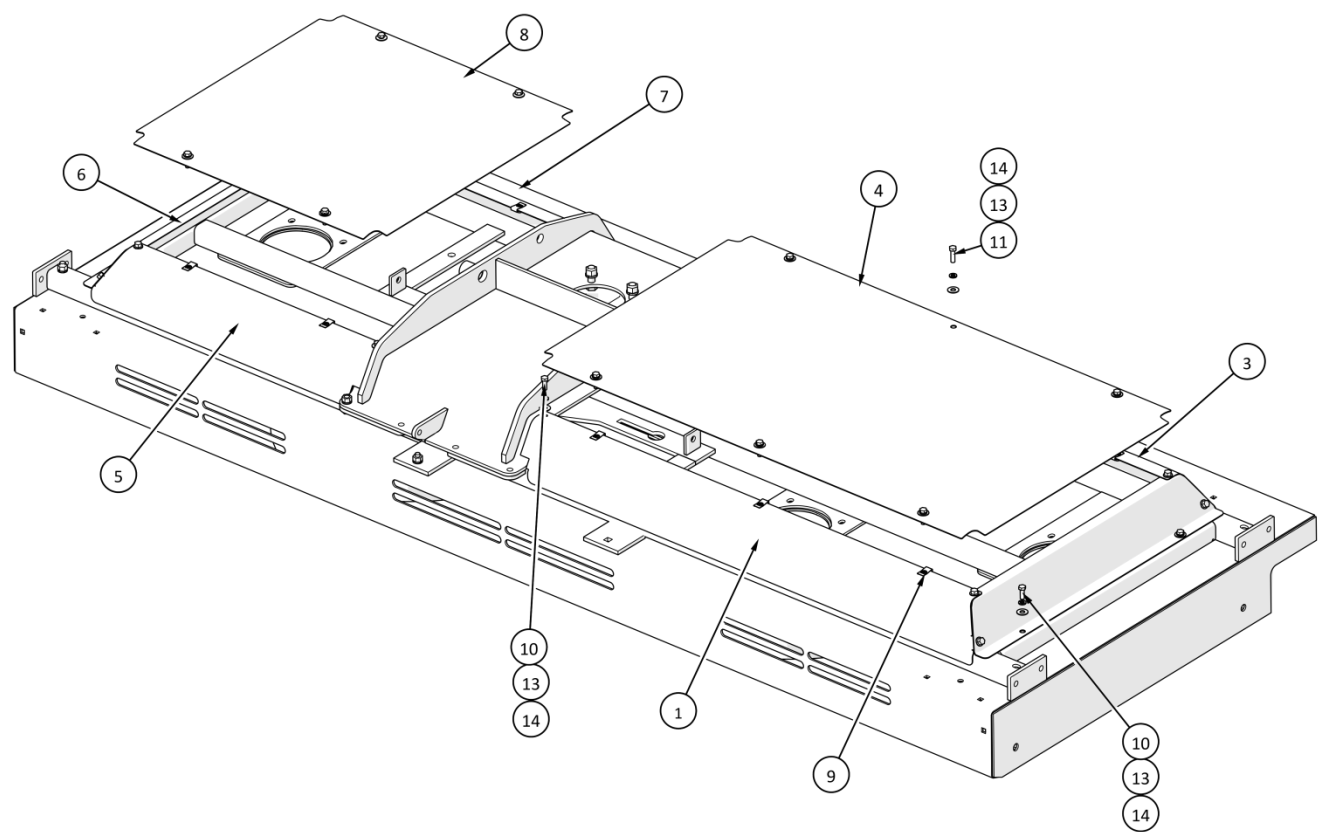


ITEM	PART #	DESCRIPTION	QTY
1	526176	HEIGHT ADJ. ROD	4
2	526144	JAM NUT - PL	4
3	SEE No. 7	DECK ADJUSTMENT BRACKET	3
4	607580	HEIGHT ADJ. BUSHING KIT (8 PCS)	1
5	526742	DECK ADJ. BRACKET - LONG	3
6	SEE No. 7	CASTLE NUT - 3/4 NC	4
7	526252	HEIGHT ADJ. KIT (ONE CORNER)	1
8	SEE No. 10	HEIGHT INDICATOR PLATE - FRONT	2
9	SEE No. 10	HEIGHT INDICATOR PLATE- REAR	2
10	527606	HEIGHT PLATE KIT (4 PCS)	1
11	530022	WIPER CABLE - TDR 26	2
12	526186	DECK CHANNEL	2
13	526148	CLAMP WASHER KIT (4 PCS)	4
14	528386	DECK LOCK PLATE - LEFT	1
15	528382	DECK LOCK PLATE - RIGHT	1
16	607595	UHMW DECK STANDOFF PAD	2
17	527375	HEIGHT PLATE ANGLE	1
18	530008	TDR-26 RH DECK FRAME WELDMENT	1
19	530002	TDR-26 LH DECK FRAME WELDMENT	1

ITEM	PART #	DESCRIPTION	QTY
20	530024	MOWER DECK TDR26 - PAINTED	1
21	530048	MOWER DECK TDR26 - GALVANIZED	1
22	213025	FLANGE BRG - 2 BOLT HEX	4
23	O.L.	HEX BOLT- 1/2 X 1.25 NC GR5 PL	8
24	O.L.	HEX BOLT- 1/2 X 1.5 NC GR5 PL	8
25	O.L.	HEX BOLT- 1/2 X 1.75 NC GR5 PL	8
26	O.L.	HEX BOLT- 1/2 X 3 NC GR5 PL	4
27	O.L.	CARR. BOLT- 1/2 X 1.25 NC GR5 PL	3
28	O.L.	CARR. BOLT- 1/2 X 1.75 NC GR5 PL	4
29	O.L.	LOCK WASHER- 1/2 PL	35
30	O.L.	HEX NUT - 1/2NC GR5 PL	41
31	O.L.	CARR. BOLT- 5/8 X 2 NC GR5 PL	4
32	O.L.	LOCK WASHER- 5/8 PL	4
33	O.L.	HEX NUT - 5/8NC GR5 PL	4
34	O.L.	CARR. BOLT- 3/8 X 1.25 NC GR5 PL	4
35	O.L.	FLAT WASHER- 3/8 PL	4
36	O.L.	HEX LOCK NUT - 3/8 NC GR5 PL	4
37	530014	ROLLER - TDR26 HEX	2

O.L. - OBTAIN LOCALLY

1.6 Wing Deck Shields

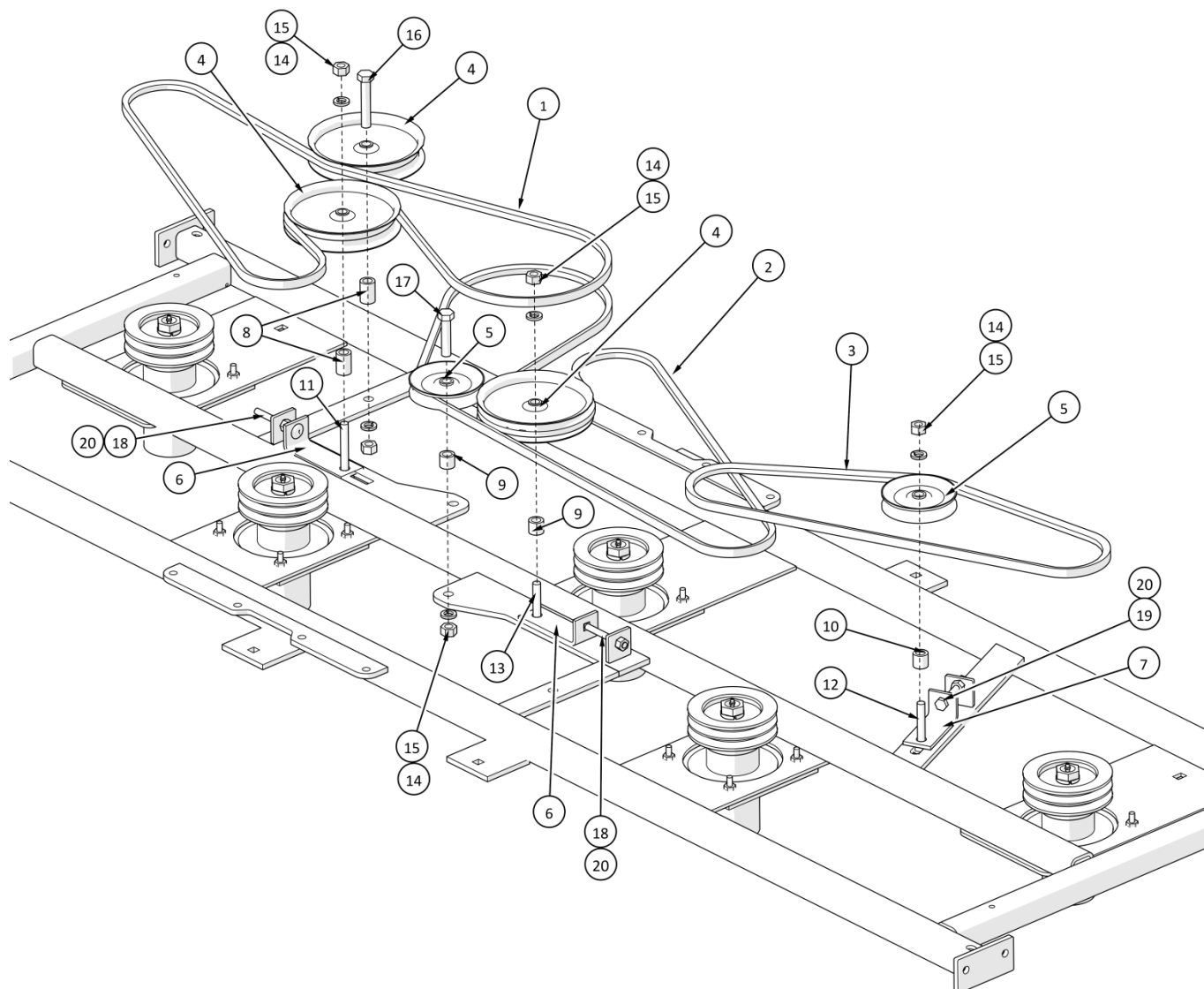


ITEM	PART #	DESCRIPTION	QTY
1	530017	DECK SHIELD SIDE - L.H.	1
2	527363	DECK SHIELD END	1
3	530015	DECK SHIELD SIDE - R.H.	1
4	530013	DECK SHIELD	1
5	527359	DECK SHIELD SIDE - R.H.	1
6	527363	DECK SHIELD END	1
7	527361	DECK SHIELD SIDE - L.H.	1
8	527367	DECK SHIELD	1

ITEM	PART #	DESCRIPTION	QTY
9	527308	3/8" U-NUT	10
10	O.L.	HEX BOLT- 3/8 X 1 NC GR5 PL	8
11	O.L.	HEX BOLT - 3/8 x 1.25 NC GR5 PL	10
12	O.L.	FLANGE BOLT - 3/8 X 5/8	8
13	O.L.	LOCK WASHER- 3/8 PL	26
14	O.L.	FLAT WASHER- 3/8 PL	18
15	O.L.	HEX NUT - 3/8NC GR5 PL	8

O.L. - OBTAIN LOCALLY

1.7 Wing Deck Drive

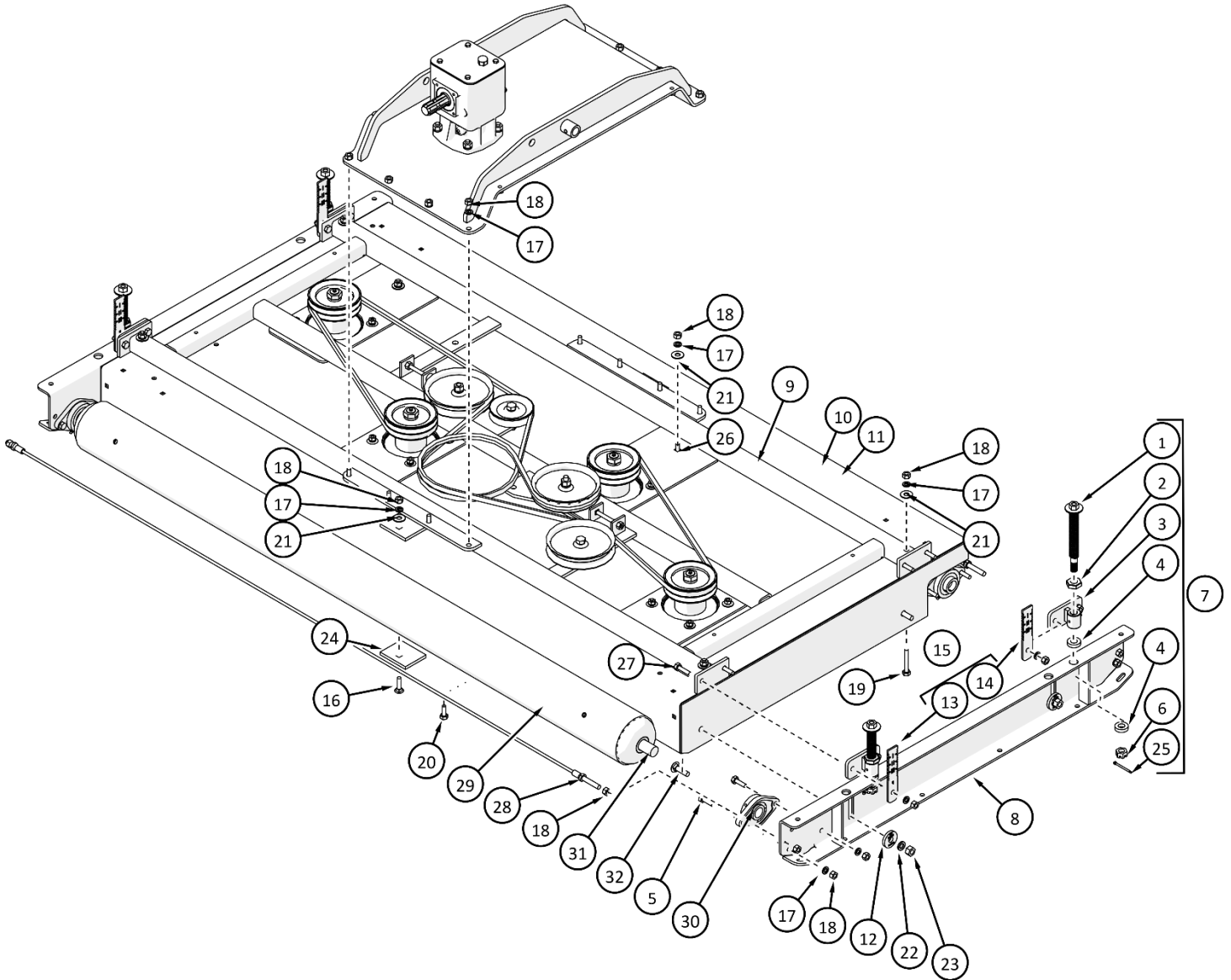


ITEM	PART #	DESCRIPTION	QTY
1	212046	BELT - B116	1
2	212045	BELT - B132	1
3	212035	BELT - B66	1
4	527097	IDLER PULLEY - 7" O.D.	3
5	212009	IDLER PULLEY - 5" O.D.	2
6	527103	IDLER PULLEY BRACKET	2
7	526331	IDLER PULLEY BRACKET	1
8	527229	PULLEY SPACER - 1.48	2
9	527225	PULLEY SPACER - 0.875	2
10	600225	PULLEY SPACER - 0.944	1
11	O.L.	CARR. BOLT- 5/8 X 4 NC GR5 PL	1

ITEM	PART #	DESCRIPTION	QTY
12	O.L.	CARR. BOLT- 5/8 X 3.5 NC GR5 PL	1
13	O.L.	CARR. BOLT- 5/8 X 3 NC GR5 PL	1
14	O.L.	LOCK WASHER- 5/8 PL	5
15	O.L.	HEX NUT - 5/8NC GR5 PL	5
16	O.L.	HEX BOLT- 5/8 X 3.5 NC GR5 PL	1
17	O.L.	HEX BOLT- 5/8 X 2.75 NC GR5 PL	1
18	O.L.	CARR. BOLT- 1/2 X 4 NC GR5 PL	2
19	O.L.	HEX TAP BOLT- 1/2 X 3.5 NC GR5 PL	1
20	O.L.	HEX NUT - 1/2NC GR5 PL	6

O.L. - OBTAIN LOCALLY

1.8 Rear Deck Assembly

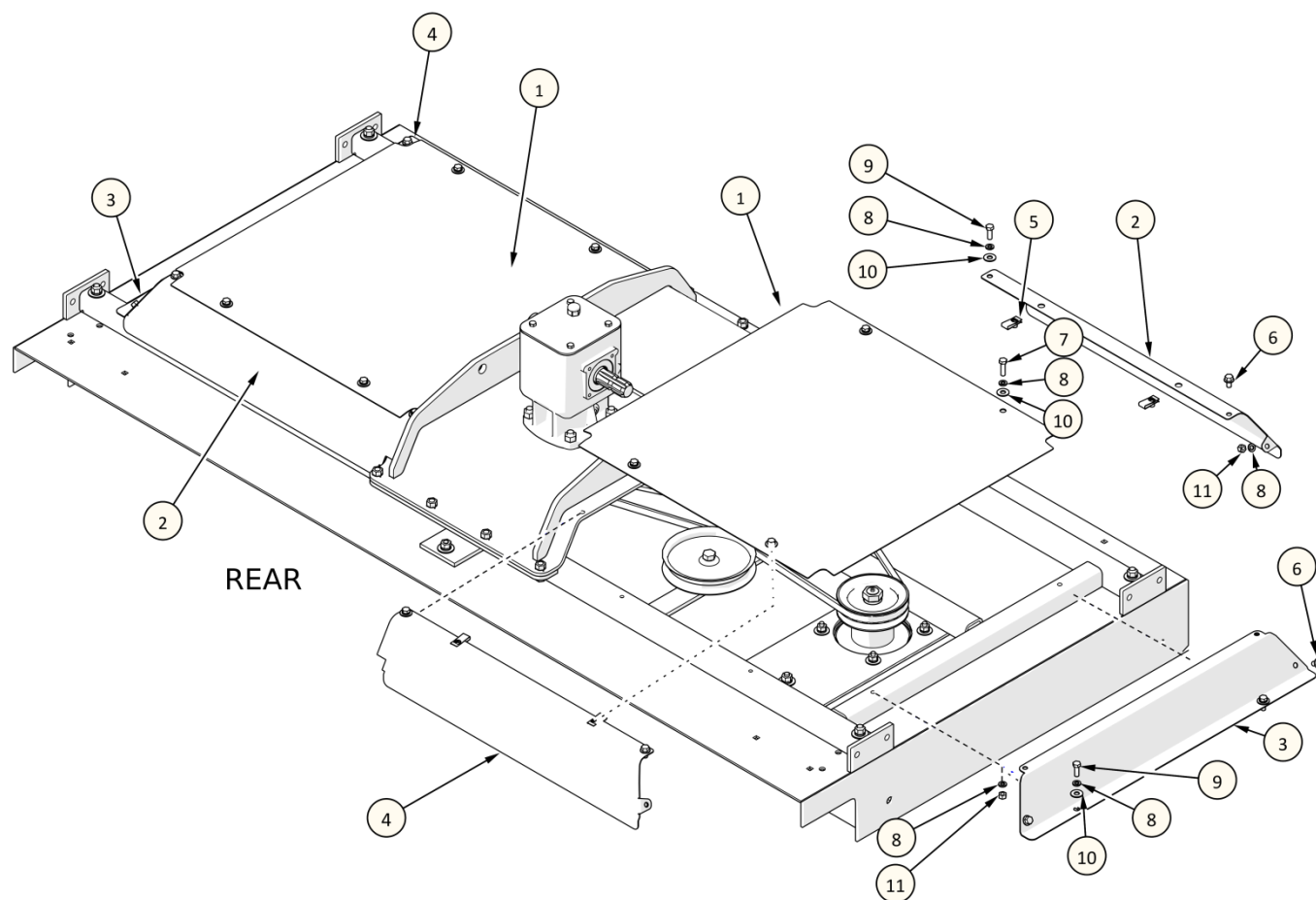


ITEM	PART #	DESCRIPTION	QTY
1	SEE ITEM 7	HEIGHT ADJ. ROD	4
2	526144	ACME JAM NUT	4
3	SEE ITEM 7	DECK ADJUSTMENT BRACKET	4
4	607580	HEIGHT ADJ. BUSHING KIT (8 PCS)	8
5	O.L.	HEX BOLT- 1/2" X 1.50 NC GR5 PL	8
6	SEE ITEM 7	CASTLE NUT - 3/4" NC GR5 PL	1
7	526252	TDR HEIGHT ADJ. KIT	1
8	526946	DECK CHANNEL - GALV	2
9	526646	DECK FRAME	1
10	530034	MOWER DECK - PAINTED	1
11	530052	MOWER DECK - GALVANIZED	1
12	526148	CLAMP WASHER KIT (4 PCS)	4
13	SEE ITEM 15	HEIGHT INDICATOR PLATE - FRONT	2
14	SEE ITEM 15	HEIGHT INDICATOR PLATE - REAR	2
15	527606	TDR HEIGHT PLATE KIT (4 PCS)	1
16	O.L.	CARR. BOLT - 1/2" X 1.75" NC GR5 PL	2
17	O.L.	LOCKWASHER - 1/2" PL	32

ITEM	PART #	DESCRIPTION	QTY
18	O.L.	HEX NUT - 1/2"NC GR5 PL	36
19	O.L.	HEX BOLT- 1/2" X 3.00 NC GR5 PL	4
20	O.L.	HEX BOLT- 1/2" X 1.25 NC GR5 UPL	8
21	O.L.	FLAT WASHER - 1/2" PL	8
22	O.L.	LOCKWASHER - 5/8" PL	4
23	O.L.	HEX NUT - 5/8"NC GR5 PL	4
24	526175	BOTTOM PLATE	1
25	O.L.	COTTER PIN - 3/16" X 1.50	4
26	O.L.	CARR. BOLT - 1/2" X 1.25" NC GR5 PL	2
27	O.L.	HEX BOLT- 1/2" X 1.75 NC GR5 PL	8
28	607649	WIPER CABLE - REAR	2
29	607706	ROLLER - TDR 22 HEX /W SHAFTS	2
30	213025	FLANGE BRG - 2 BOLT HEX	4
31	607705	HEX SHAFT REPLACEMENT KIT	1
32	O.L.	CARR. BOLT - 5/8" X 2.00 NC GR5 PL	4

O.L. - OBTAIN LOCALLY

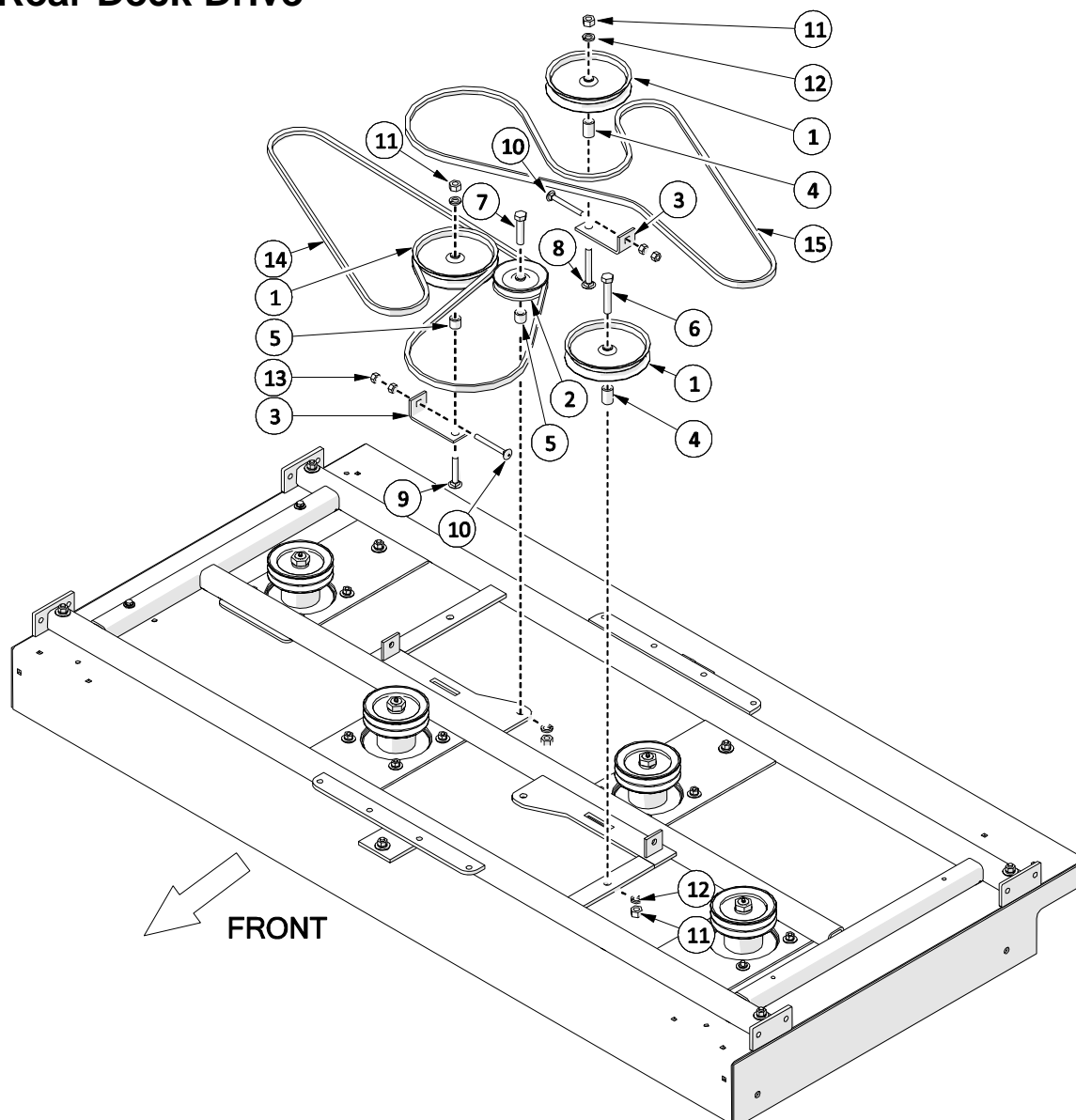
1.9 Rear Deck Shields



ITEM	PART #	DESCRIPTION	QTY
1	527367	DECK SHIELD	2
2	527359	DECK SHIELD SIDE - R.H.	2
3	527363	DECK SHIELD END	2
4	527361	DECK SHIELD SIDE - L.H.	2
5	527308	U-NUT - 3/8" NC	8
6	O.L.	FLANGE BOLT - 3/8 X 5/8	4
7	O.L.	HEX BOLT - 3/8 x 1.25 NC GR5 PL	4
8	O.L.	LOCK WASHER- 3/8 PL	12
9	O.L.	HEX BOLT- 3/8 X 1 NC GR5 PL	4
10	O.L.	FLAT WASHER- 3/8 PL	8
11	O.L.	HEX NUT - 3/8NC GR5 PL	4

O.L. - OBTAIN LOCALLY

1.10 Rear Deck Drive

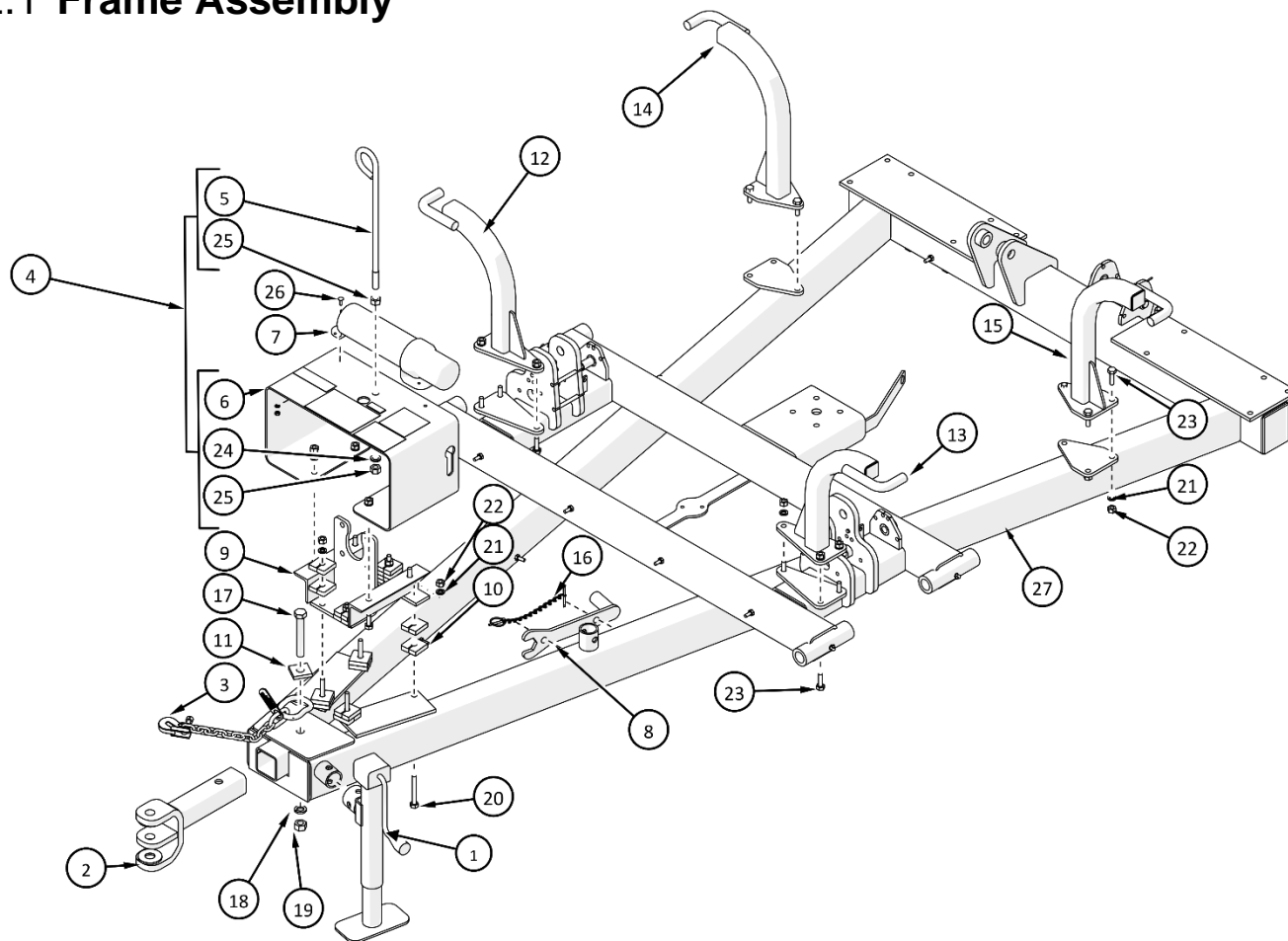


ITEM	PART #	DESCRIPTION	QTY
1	527097	IDLER PULLEY-7"	3
2	212009	IDLER PULLEY-5"	1
3	527103	IDLER PULLEY BRACKET	2
4	527229	PULLEY SPACER - 1.48"	2
5	527225	PULLEY SPACER - 0.875"	2
6	O.L.	HEX BOLT- 5/8" X 3.50 NC GR5 PL	1
7	O.L.	HEX BOLT- 5/8" X 2.75 NC GR5 PL	1
8	O.L.	CARRIAGE BOLT - 5/8" X 4.00 NC GR5 PL	1
9	O.L.	CARRIAGE BOLT - 5/8" X 3.00 NC GR5 PL	1
10	O.L.	CARRIAGE BOLT - 1/2" X 4.00 NC GR5 PL	2
11	O.L.	HEX NUT - 5/8"NC GR5 PL	4
12	O.L.	LOCKWASHER - 5/8"	4
13	O.L.	HEX NUT - 1/2"NC GR5 PL	4
14	212045	BELT - B132	1
15	212046	BELT - B117	1

O.L. - OBTAIN LOCALLY

2 Frame Assembly

2.1 Frame Assembly

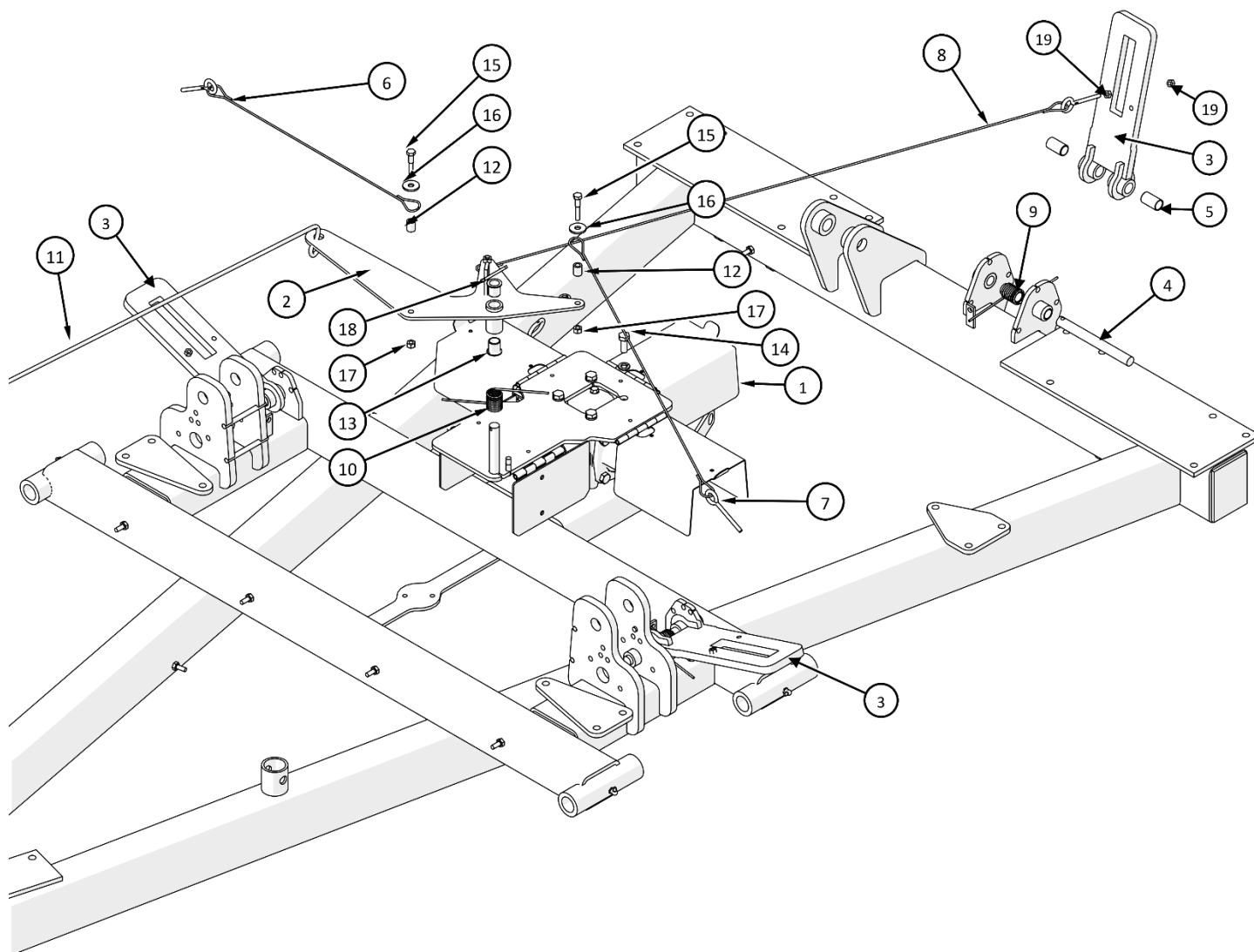


ITEM	PART #	DESCRIPTION	QTY
1	219006	IMPLEMENT JACK	1
2	521047	4 POSITION HITCH	1
3	521048	SAFETY CHAIN	1
4	522408	HOSE SUPPORT - COMPLETE	1
5	522413	HOSE GUIDE - W/ HARDWARE	1
6	ITEM No. 4	HOSE SUPPORT	1
7	120519	MANUAL HOLDER TUBE	1
8	526094	TDR HEIGHT ADJUST WRENCH	1
9	522402	PTO MOUNTING BRKT	1
10	522414	PTO BRACKET SPACER KIT (4 PC)	1
11	521857	SAFETY CHAIN FLAT WASHER	1
12	526668	DECK STANDOFF - FRONT RIGHT	1
13	526674	DECK STANDOFF - FRONT LEFT	1
14	526670	DECK STANDOFF - REAR RIGHT	1

ITEM	PART #	DESCRIPTION	QTY
15	526672	DECK STANDOFF - REAR LEFT	1
16	302910	LYNCH PIN - 3/16" RD W/ CHAIN	1
17	O.L.	HEX BOLT- 3/4" X 5.00 NC GR5 PL	1
18	O.L.	LOCKWASHER - 3/4" PL	1
19	O.L.	HEX NUT - 3/4"NC GR5 PL	1
20	O.L.	TAP BOLT- 1/2" X 3.50 NC GR5 PL	5
21	O.L.	LOCKWASHER - 1/2"	18
22	O.L.	HEX NUT - 1/2"NC GR5 PL	18
23	O.L.	HEX BOLT - 1/2" X 1.50 NC GR 5PL	12
24	O.L.	LOCKWASHER - 5/8" PL	1
25	O.L.	HEX NUT - 5/8"NC GR5 PL	2
26	O.L.	CARR. BOLT - 1/4" X .75 NC GR5 PL	2
27	607150	MAIN FRAME	1

O.L. - OBTAIN LOCALLY

2.2 Wing Locks

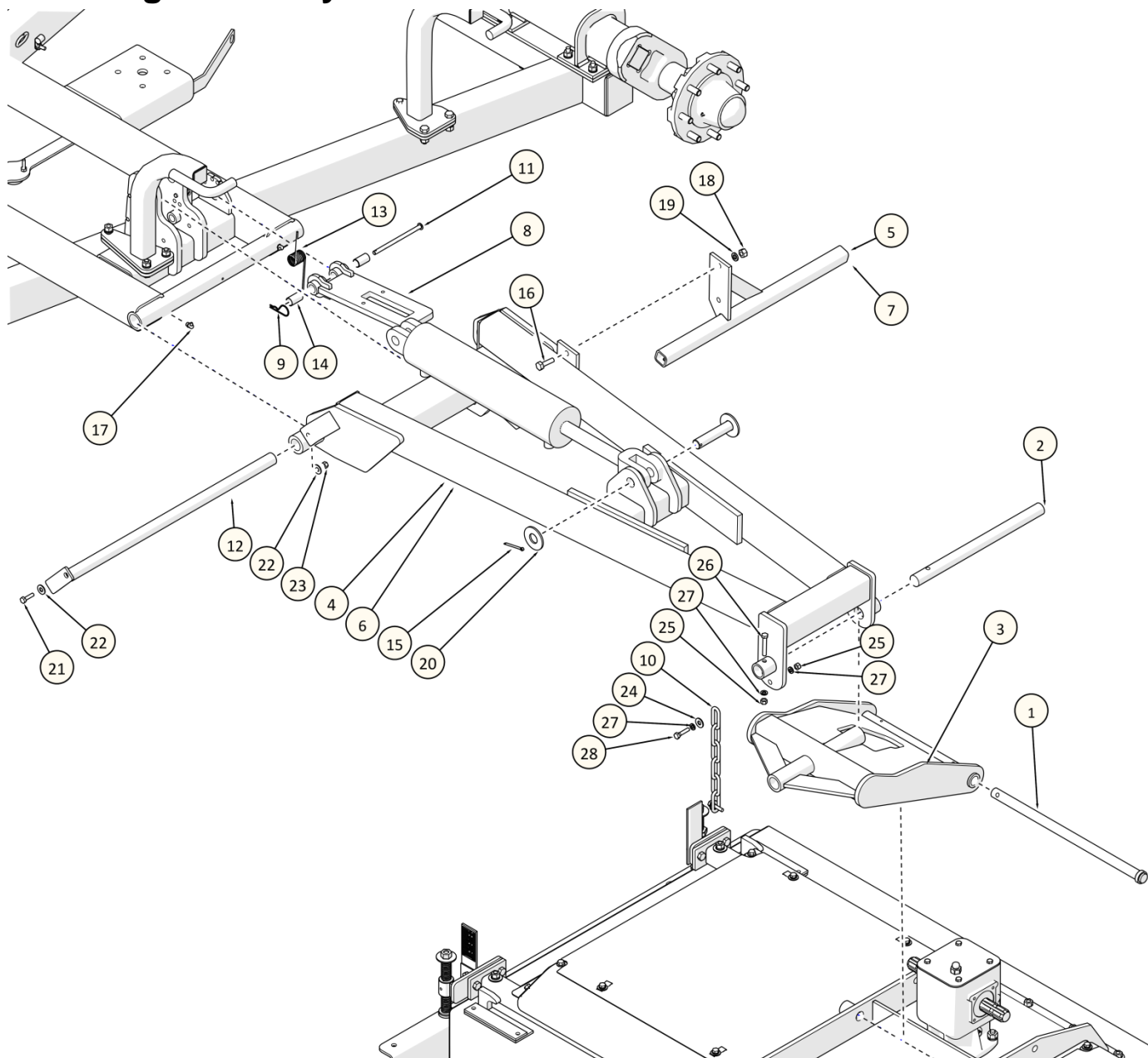


ITEM	PART #	DESCRIPTION	QTY
1	526618	4-WAY GEARBOX SHIELD	1
2	526684	LOCK RELEASE SWIVEL	1
3	526676	WING LOCK	3
4	527231	LOCK PIN	3
5	213080	BUSHING KIT - 6PC	1
6	526954	LOCK RELEASE CABLE - RIGHT	1
7	526956	LOCK RELEASE CABLE - LEFT	1
8	526952	LOCK RELEASE CABLE - REAR	1
9	527245	WING LOCK SPRING - RH WIND	3
10	527247	WING LOCK SPRING - LH WIND	1

ITEM	PART #	DESCRIPTION	QTY
11	526474	PULL ROPE	1
12	214009	BUSHING KIT - 2PC	3
13	527350	FLANGE BUSHING KIT (2 PCS)	2
14	521764	M12 BOLT & L.W KIT (16 PCS)	4
15	O.L.	HEX BOLT - 3/8" X 1.75 NC GR 5PL	3
16	O.L.	FENDER WASHER - 3/8" PL	3
17	O.L.	HEX NUT - 3/8" NC GR5 PL	3
18	O.L.	COTTER PIN - 3/16" X 2.00	1
19	O.L.	HEX NUT - 5/16" NC GR5 PL	6

O.L. - OBTAIN LOCALLY

2.3 Wing Assembly

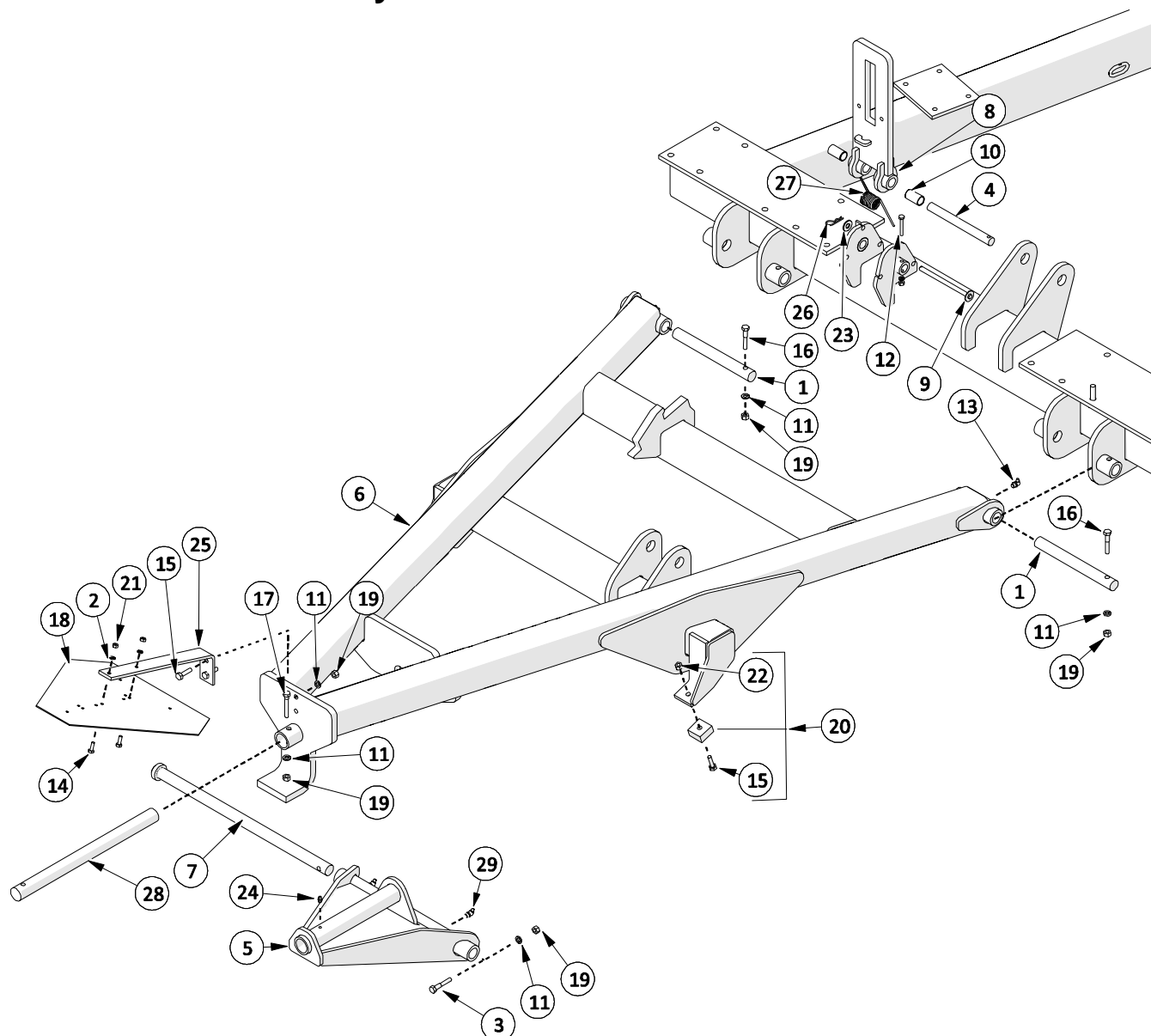


ITEM	PART #	DESCRIPTION	QTY
1	526720	DECK LIFT PIN	1
2	527255	SWIVEL PIN	1
3	607384	DECK SWIVEL	1
4	607188	WING FRAME - LH (SHOWN)	1
5	526690	DECK STABILIZER L.H. (SHOWN)	1
6	607260	WING FRAME - R.H. (NOT SHOWN)	1
7	526688	DECK STABILIZER R.H. (NOT SHOWN)	1
8	526676	WING LOCK	1
9	O.L.	HAIR PIN - .093" X 1-5/8"	1
10	526972	DECK STOP CHAIN	1
11	607304	LOCK STOP PIN	1
12	526178	WING PIN	1
13	527245	WING LOCK SPRING R.H. WIND	1
14	213080	SLEEVE BEARING KIT - 6 PCS	1
15	O.L.	COTTER PIN - 3/16" X 1.50	1

ITEM	PART #	DESCRIPTION	QTY
16	O.L.	HEX BOLT - 1/2" X 1.50 NC GR5 PL	2
17	O.L.	GREASE FITTING - 90 DEG	2
18	O.L.	HEX NUT - 1/2"NC GR5 PL	8
19	O.L.	LOCK WASHER- 1/2" PL	8
20	O.L.	FLAT WASHER- 1" PL	1
21	O.L.	HEX BOLT - 3/8" X 1.25 NC GR5 PL	1
22	O.L.	FLAT WASHER- 3/8" PL	2
23	O.L.	HEX LOCK NUT - 3/8"NC GR5 PL	1
24	O.L.	HARDENED FLAT WASHER - 3/8"	2
25	O.L.	HEX NUT - 3/8"NC GR5 PL	3
26	O.L.	HEX BOLT - 3/8" X 2.00" NC GR5 PL	2
27	O.L.	LOCK WASHER- 3/8" PL	5
28	O.L.	HEX BOLT- 3/8" X 1.50 NC GR5 PL	2

O.L. - OBTAIN LOCALLY

2.4 Rear Lift Assembly

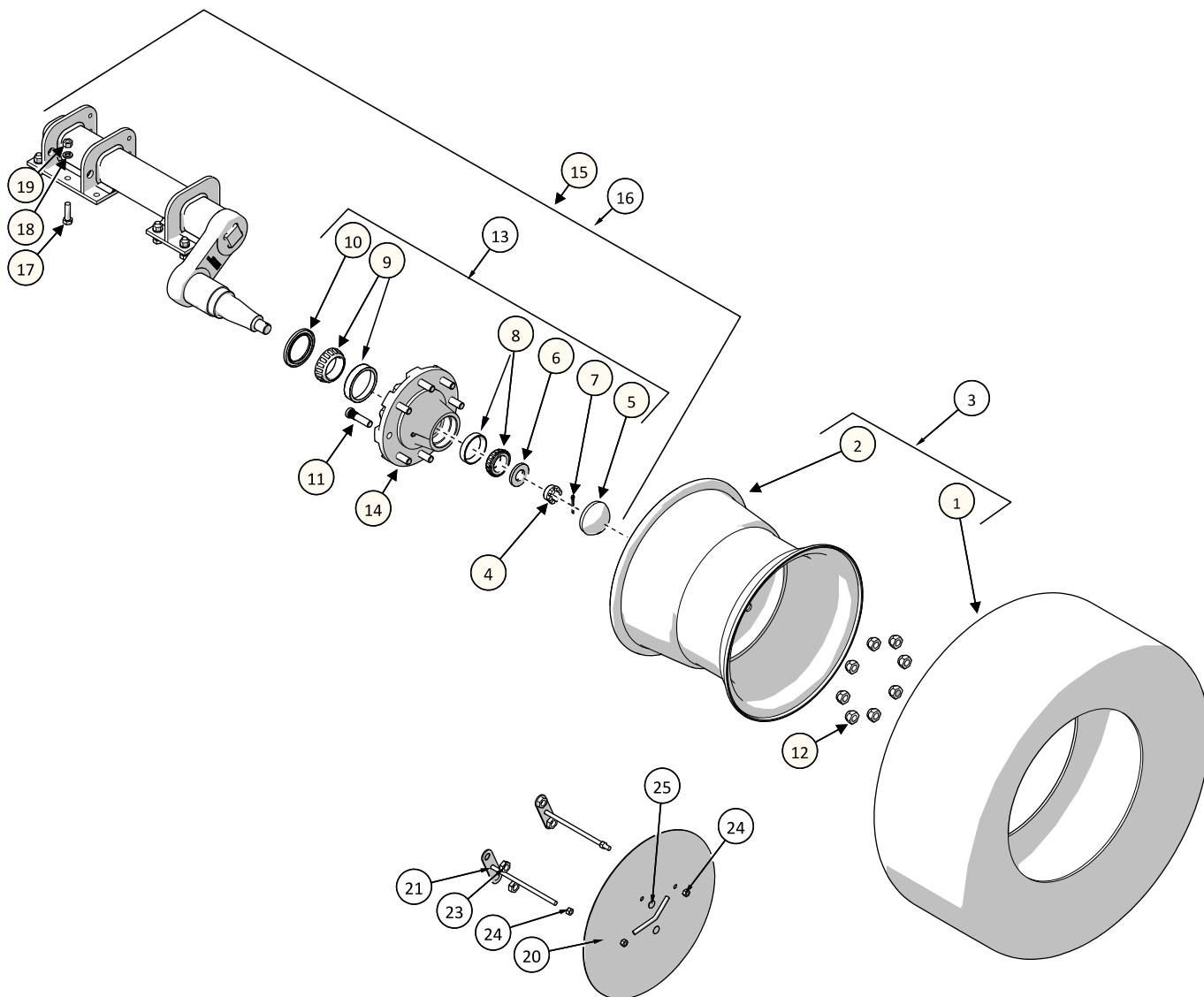


ITEM	PART #	DESCRIPTION	QTY
1	527243	REAR LIFT PIN	2
2	O.L.	LOCK WASHER- 1/4 PL	2
3	O.L.	HEX BOLT- 3/8 X 2 NC GR8 PL	1
4	527231	LOCK PIN	1
5	526704	REAR DECK SWIVEL	1
6	526716	REAR DECK LIFT	1
7	526720	DECK LIFT PIN	1
8	526676	WING LOCK	1
9	526962	LOCK STOP PIN	1
10	213080	SLEEVE BEARING KIT (6 PCS)	1
11	O.L.	LOCK WASHER- 3/8 PL	6
12	O.L.	1/4" x 1.25" HEX BOLT W/ L.W. & HEX NUT	1
13	O.L.	GREASE FITTING - 1/4-28, 90 DEG	6
14	O.L.	CARRIAGE BOLT - 1/4 x .75 NC GR5 PL	2
15	O.L.	HEX BOLT - 3/8 x 1.50 NC GR5 PL	4

ITEM	PART #	DESCRIPTION	QTY
16	O.L.	HEX BOLT- 3/8 X 2 NC GR5 PL	2
17	O.L.	HEX BOLT- 3/8 X 2.25 NC GR5 PL	1
18	521353	SMV SIGN	1
19	O.L.	HEX NUT - 3/8NC GR5 PL	6
20	600512	BUMPER KIT (4 PCS W/HARDWARE)	1
21	O.L.	HEX NUT - 1/4NC GR5 PL	2
22	O.L.	HEX LOCK NUT - 3/8 NC GR5 PL	2
23	O.L.	FLAT WASHER- 3/8 UPL	1
24	O.L.	GREASE FITTING - 1/4-28, STRAIGHT	1
25	527223	SMV BRACKET	1
26	O.L.	HAIR PIN - .093" X 1-5/8"	1
27	527245	WING LOCK SPRING R.H. WIND	1
28	527255	SWIVEL PIN	1
29	O.L.	GREASE FITTING - 1/4-28, 45 DEG	2

O.L. - OBTAIN LOCALLY

2.5 Wheel Assemblies



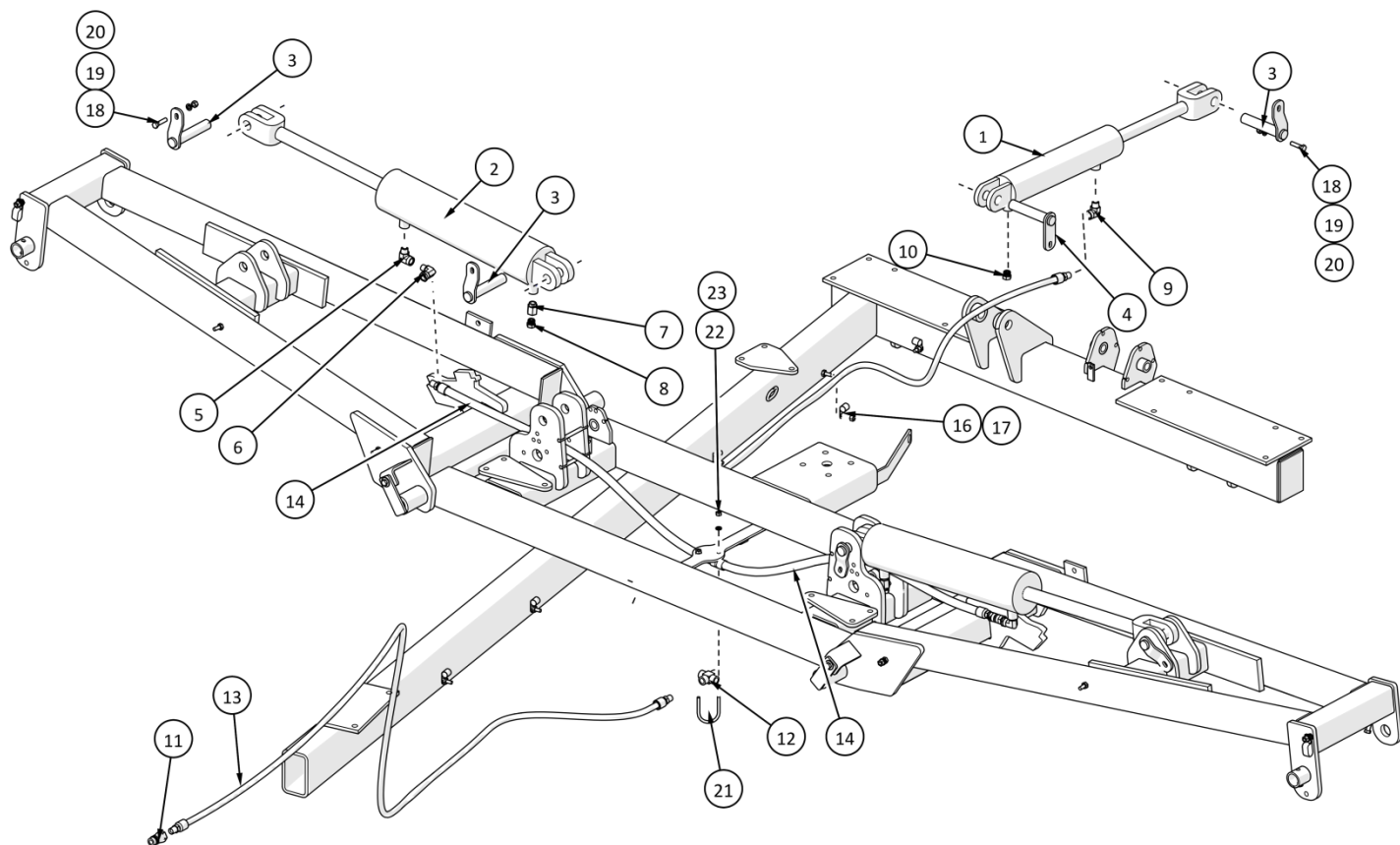
ITEM	PART #	DESCRIPTION	QTY
1	230059	TRANSPORT TIRE	1
2	230058	RIM	1
3	230057	TIRE & RIM ASSEMBLY	1
4	526914	CASTLE NUT	1
5	526918	DUST CAP	1
6	-	BEARING WASHER	1
7	O.L.	COTTER PIN - 5/32" X 1.50	1
8	-	OUTER BEARING	1
9	-	INNER BEARING	1
10	-	GREASE SEAL	1
11	526916	WHEEL STUD KIT (8 PCS)	1
12	526964	WHEEL NUT KIT (8 PCS)	1
13	526996	HUB REBUILD KIT (ITEMS 5-10)	1

ITEM	PART #	DESCRIPTION	QTY
14	526998	HUB ASSEMBLY - W/BEARINGS	1
15	527494	RH AXLE ASSEMBLY (SHOWN)	1
16	527492	LH AXLE ASSEMBLY (NOT SHOWN)	1
17	O.L.	HEX BOLT- 1/2" X 1.75 NF GR8 PL	6
18	O.L.	LOCK WASHER- 1/2" PL	6
19	O.L.	HEX NUT - 1/2"NC GR5 PL	6
20	607320	WHEEL DISC - W.A.	1
21	607326	MTG PLATE - WHEEL DISC	2
23	O.L.	JAM NUT - 5/8 UNF - GR5	4
24	O.L.	HEX LOCK NUT - 3/8 NC GR5 PL	4
25	607736	3/8" SNAP IN PLUG (5 PCS)	1

O.L. - OBTAIN LOCALLY

3 HYDRAULICS

3.1 Hydraulics - Serial Numbers: up to 2026151

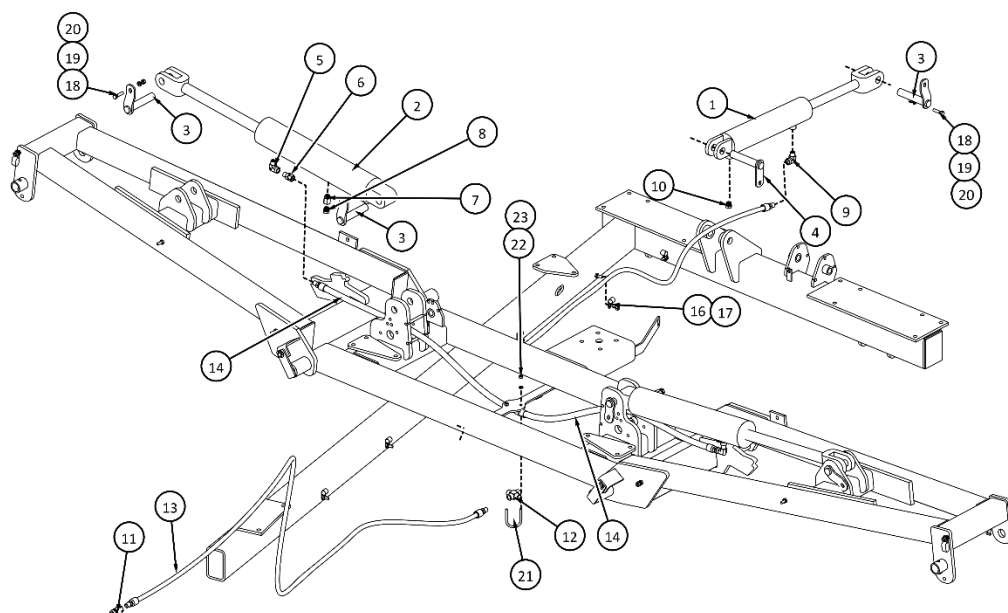


ITEM	PART #	DESCRIPTION	QTY
1	522016	HYDRAULIC CYL. - REAR	1
2	530030	HYDRAULIC CYL. - WING	2
3	607398	PIN - CYLINDER	5
4	607402	REAR CYL BASE PIN	1
5	222013	ELBOW - -8 ORB X 3/8 NPT	2
6	521336	ELBOW - RESTRICTOR	2
7	221054	ADAPTER ORB-NPTF	2
8	221141	BREATHER VENT - 1/2" NPT	2
9	521364	RESTRICTOR - REAR CYL.	1
10	221140	BREATHER VENT - 3/8" NPT	1
11	222006	HOSE END KIT (2 PCS)	1
12	521070	HYDRAULIC CROSS	1

ITEM	PART #	DESCRIPTION	QTY
13	521334	HYDRAULIC HOSE - 122"	1
14	526974	HYDRAULIC HOSE - 45"	2
15	526970	HYDRAULIC HOSE - 94"	1
16	229011	5/8" SINGLE TUBE CLAMP	5
17	O.L.	HEX LOCK NUT - 3/8" NC GR5 UPL	5
18	O.L.	HEX BOLT- 3/8 X 1.5 NC GR5 PL	2
19	O.L.	LOCKWASHER - 3/8" PL	5
20	O.L.	HEX NUT - 3/8"NC GR5 PL	5
21	304202	U BOLT - 5/16" NC	1
22	O.L.	HEX NUT - 5/16"NC GR5 PL	2
23	O.L.	LOCKWASHER - 5/16" PL	2

O.L. - OBTAIN LOCALLY

3.2 Hydraulics - Serial Numbers: 2026152 and above



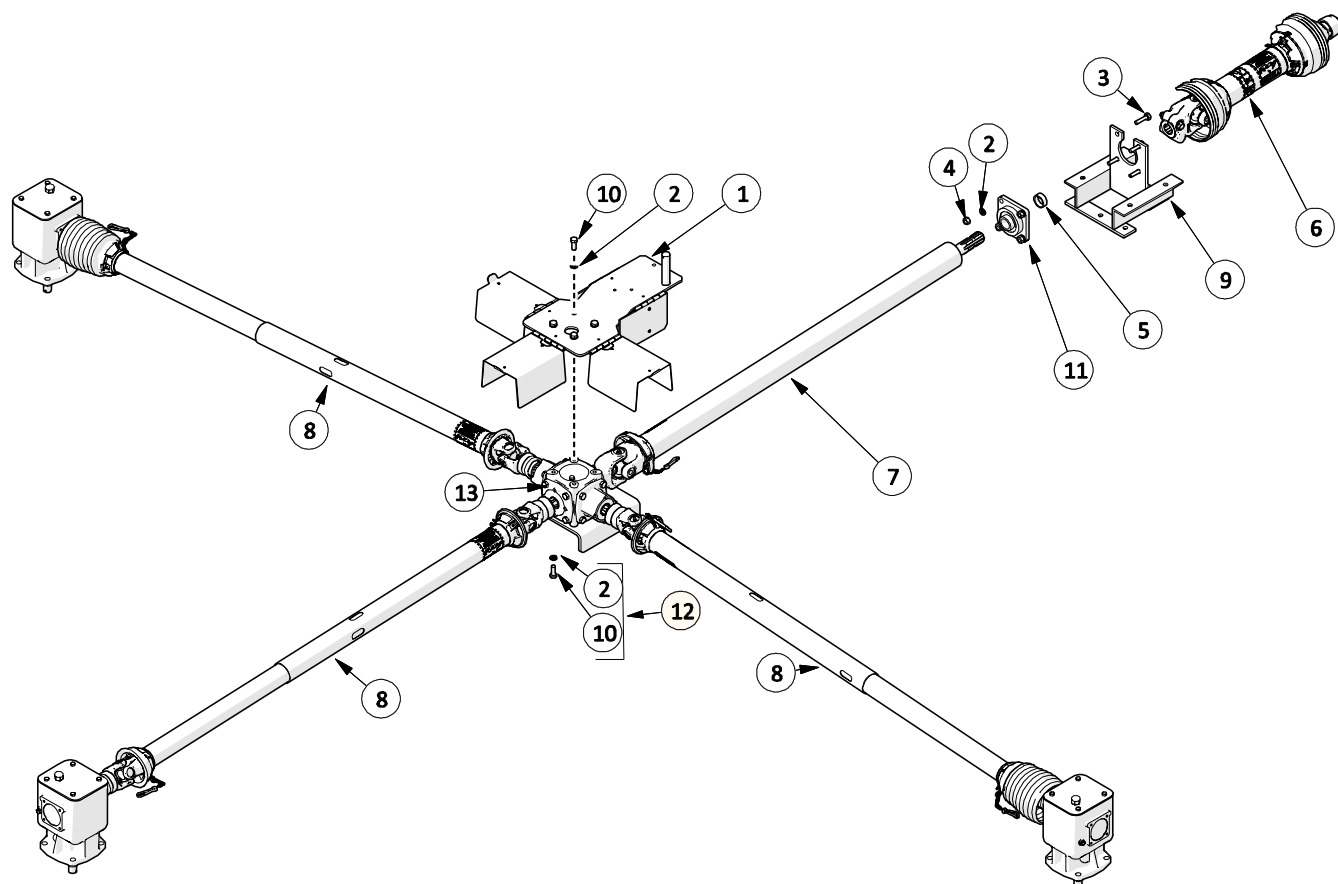
ITEM	PART #	DESCRIPTION	QTY
1	522016	HYDRAULIC CYL. - REAR	1
2	522070	HYDRAULIC CYL. 3.5" X 16"	2
3	607398	PIN - CYLINDER	5
4	607402	REAR CYL BASE PIN	1
5	222012	ADAPTOR-6805-8-6- RESTRICTOR	2
6	222022	PIPE SWIVEL UNION - 3/8	2
7	221054	ADAPTER ORB-NPTF	2
8	221141	BREATHER VENT - 1/2" NPT	2
9	521364	RESTRICTOR - REAR CYL.	1
10	221140	BREATHER VENT - 3/8" NPT	1
11	222006	HOSE END KIT (2 PCS)	1
12	521070	HYDRAULIC CROSS	1

ITEM	PART #	DESCRIPTION	QTY
13	521334	HYDRAULIC HOSE - 122"	1
14	526974	HYDRAULIC HOSE - 45"	2
15	526970	HYDRAULIC HOSE - 94"	1
16	229011	5/8" SINGLE TUBE CLAMP	5
17	O.L.	HEX LOCK NUT - 3/8" NC GR5 UPL	5
18	O.L.	HEX BOLT- 3/8 X 1.5 NC GR5 PL	2
19	O.L.	LOCKWASHER - 3/8" PL	5
20	O.L.	HEX NUT - 3/8"NC GR5 PL	5
21	304202	U BOLT - 5/16" NC	1
22	O.L.	HEX NUT - 5/16"NC GR5 PL	2
23	O.L.	LOCKWASHER - 5/16" PL	2

O.L. - OBTAIN LOCALLY

4 DRIVELINE

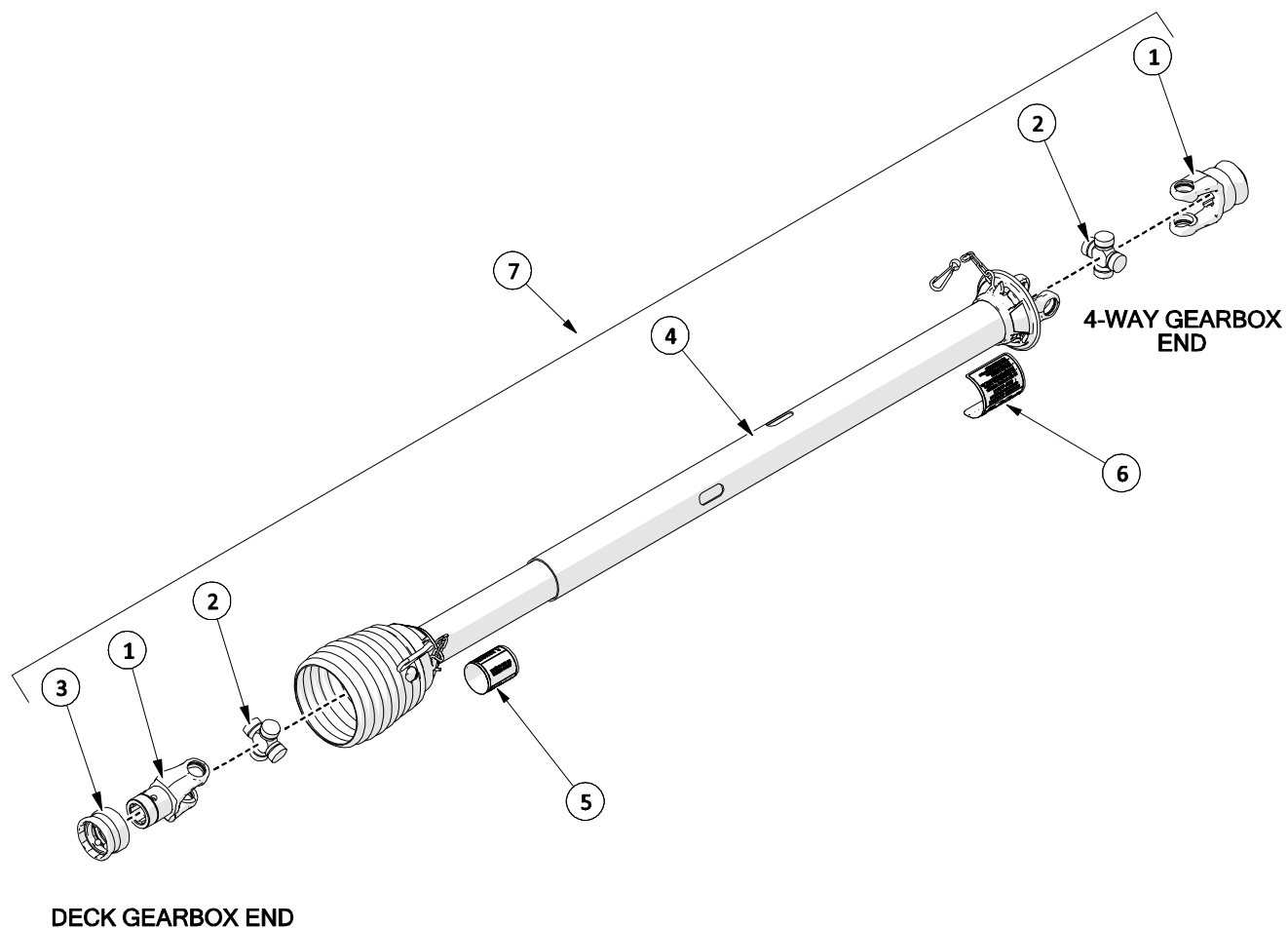
4.1 Driveline



ITEM	PART #	DESCRIPTION	QTY
1	526618	4 WAY GEARBOX SHIELD	1
2	O.L.	LOCK WASHER- 1/2 PL	12
3	O.L.	HEX BOLT- 1/2 X 1.75 NC GR5 PL	4
4	O.L.	HEX NUT - 1/2NC GR5 PL	4
5	521789	PTO SPACER	1
6	210150	INPUT PTO SHAFT	1
7	210170	INTERMEDIATE PTO SHAFT	1
8	210190	DECK PTO SHAFT	3
9	522402	PTO MOUNTING BRACKET	1
10	SEE ITEM 12	HEX BOLT - M12 X 30GR 8.8	8
11	521323	4 BOLT FLANGE BEARING	1
12	521764	M12 BOLT & LOCKWASHER KIT (16 PCS)	1
13	521497	GEAR BOX - 4 SHAFT	1

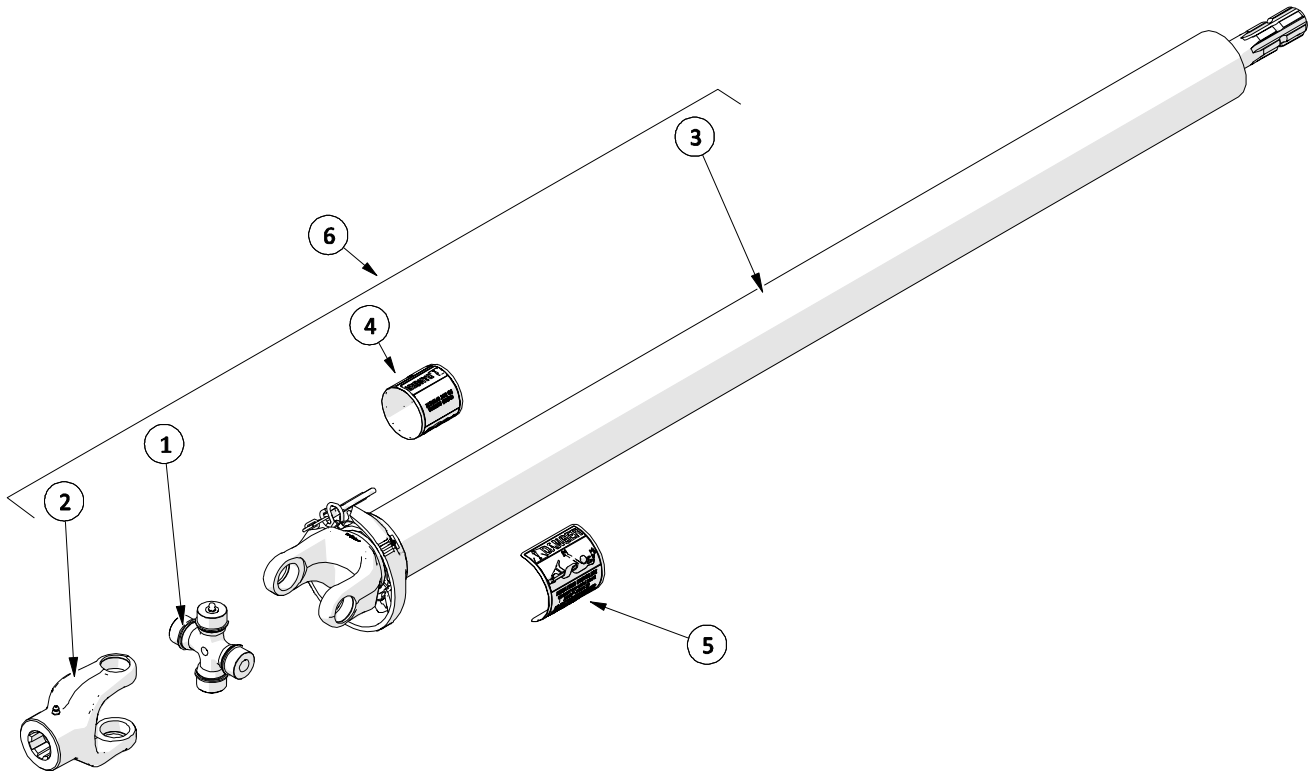
O.L. - OBTAIN LOCALLY

4.2 Deck PTO Shaft



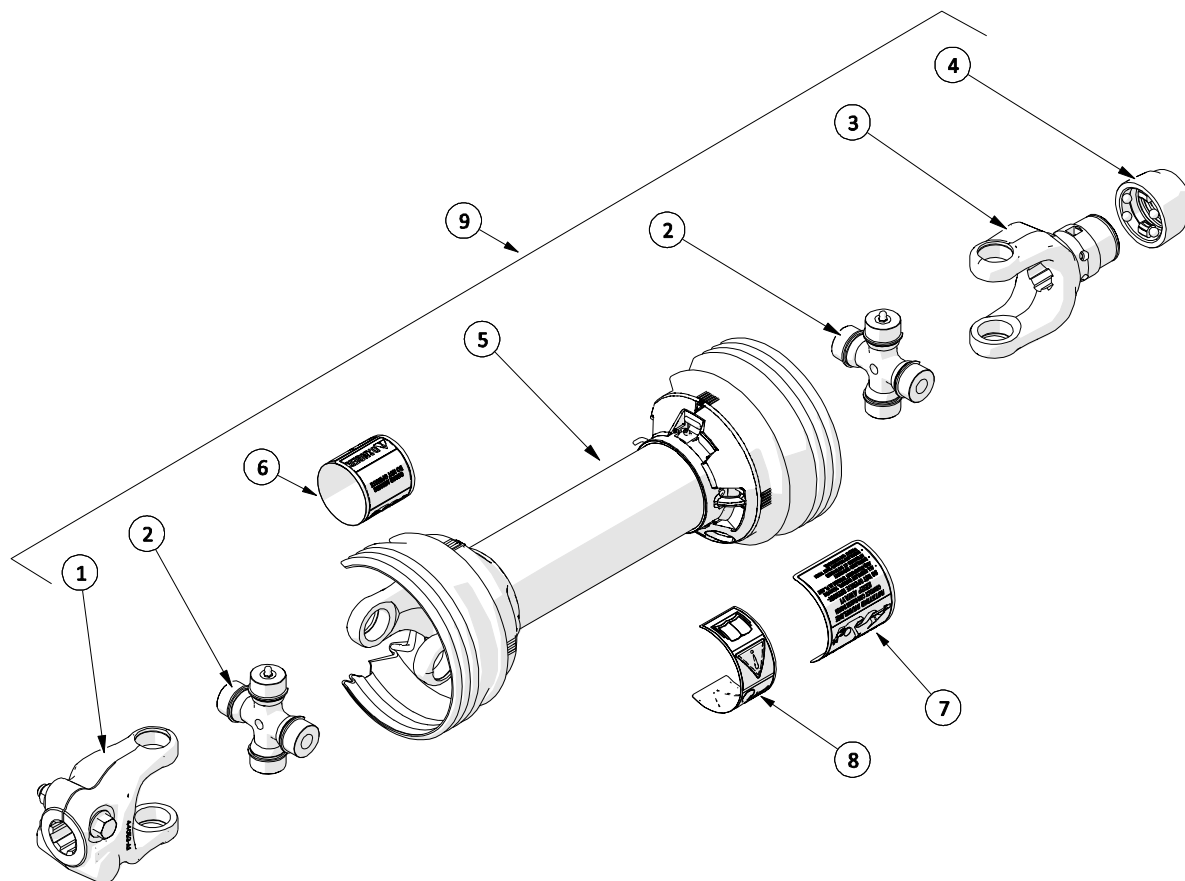
ITEM	PART #	DESCRIPTION	QTY
1	210192	SPRING-LOCK YOKE ASSEMBLY	2
2	210191	U-JOINT KIT	2
3	210196	SPRING-LOCK REPAIR KIT	2
4	210195	COMPLETE GUARD SET	1
5	210239	SAFETY SIGN - INNER GUARD	1
6	210237	SAFETY SIGN - OUTER GUARD	1
7	210190	DECK SHAFT - COMPLETE W/GUARDS	1

4.3 Intermediate PTO Shaft



ITEM	PART #	DESCRIPTION	QTY
1	210171	U-JOINT KIT	1
2	210172	SLIDE YOKE	1
3	210173	GUARD SET	1
4	210239	SAFETY SIGN - INNER GUARD	1
5	210237	SAFETY SIGN - OUTER GUARD	1
6	210170	INTERMEDIATE SHAFT - COMPLETE	1

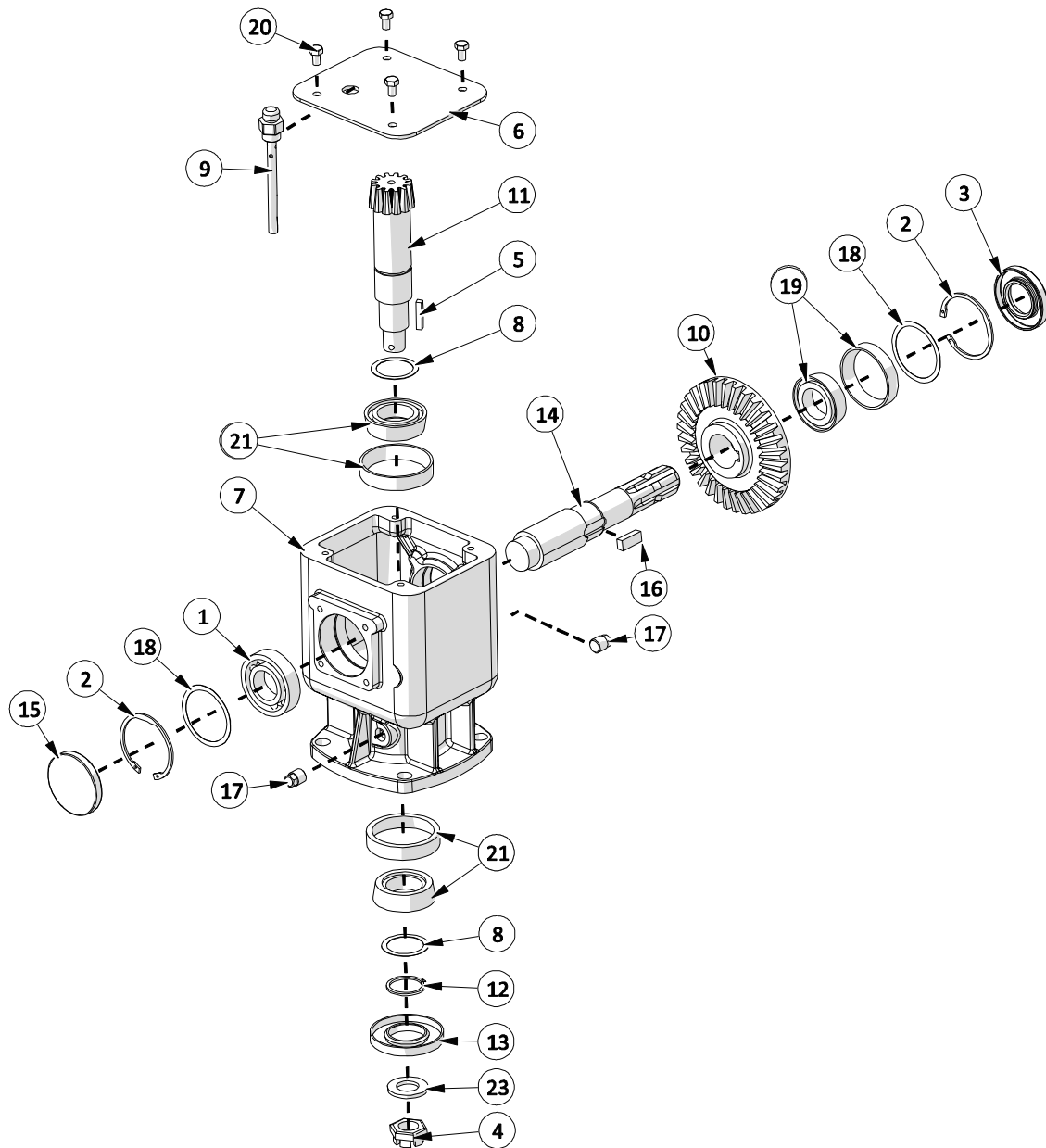
4.4 Input PTO Shaft



ITEM	PART #	DESCRIPTION	QTY
1	210174	CLAMP YOKE	1
2	210171	U-JOINT KIT	2
3	210175	SLIDE LOCK YOKE ASSEMBLY	1
4	210179	SLIDE LOCK REPAIR KIT	1
5	210178	COMPLETE GUARD SET	1
6	210239	SAFETY SIGN - INNER GUARD	1
7	210237	SAFETY SIGN - OUTER GUARD	1
8	210238	CE WARNING DECAL	1
9	210150	INPUT PTO SHAFT - COMPLETE	1

4.5 Deck Gearbox - Option #1 - 521432

Internal parts are not interchangeable with 215180 gearbox

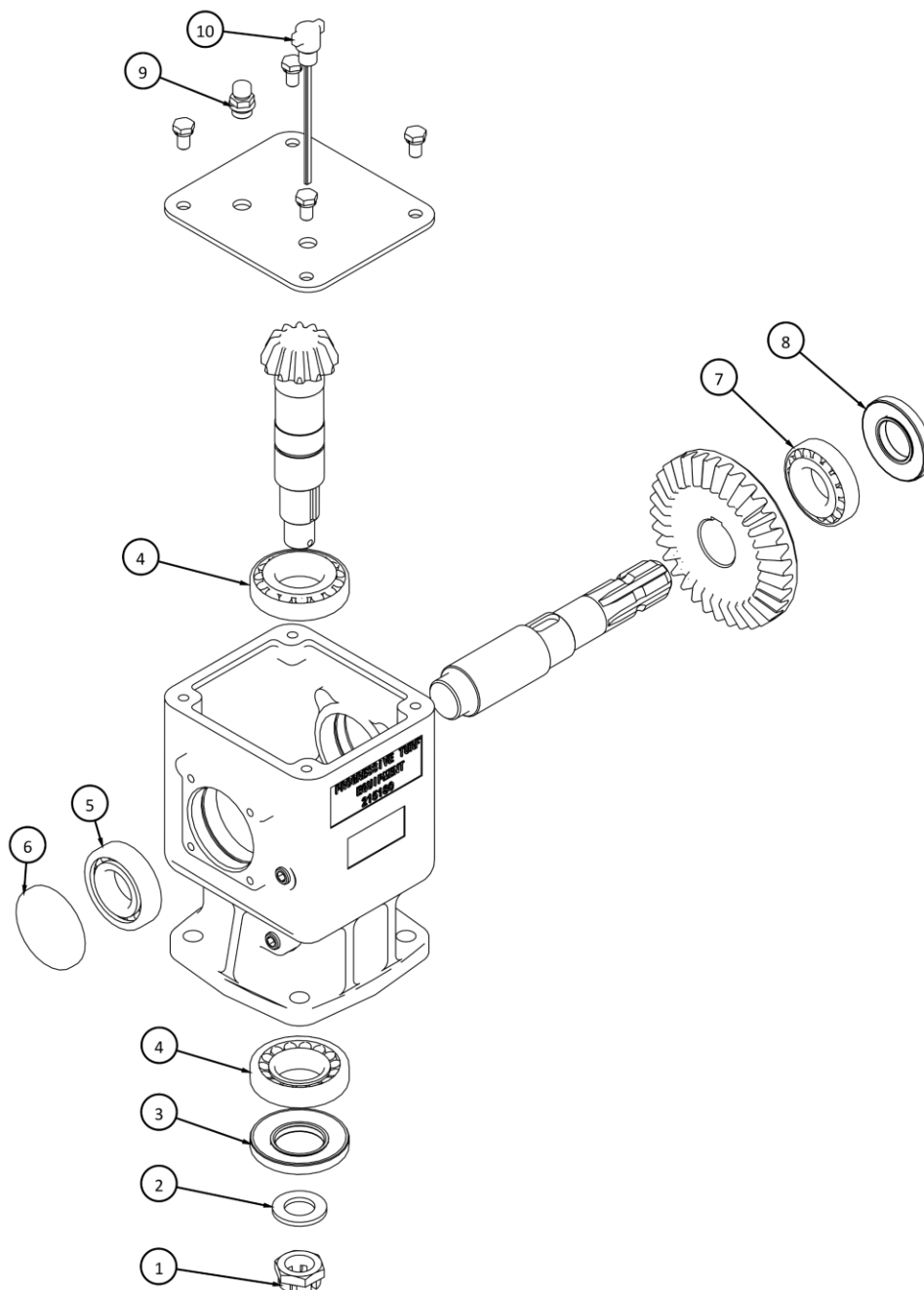


ITEM	PART #	DESCRIPTION	QTY
1	521116	BEARING	1
2	521126	SNAP RING - 3 PC KIT	2
3	521127	OIL SEAL	1
4	521130	CASTLE NUT - M24	1
5	521390	DECK GEARBOX KEY (3 PCS)	1
6	521420	COVER PLATE	1
7	521428	CASING	1
8	521436	SHIM KIT (2 PCS)	2
9	521433	OIL LEVEL DIPSTICK	1
10	521434	GEAR	1
11	521435	PINION SHAFT	1
12	521439	SNAP RING - 3 PC KIT	1

ITEM	PART #	DESCRIPTION	QTY
13	521440	OIL SEAL	1
14	521441	INPUT SHAFT	1
15	521443	CAP	1
16	521444	KEY - 12 X 8 X 30	1
17	521482	HEX PIPE PLUG	2
18	521491	SHIM KIT	2
19	521362	BEARING - TAPERED ROLLER	1
20	521399	BOLT - M8 X 14 - 8.8	4
21	521442	BEARING - 30208	2
23	521129	WASHER KIT (3 PCS)	1
24	521432	GEAR BOX - DECK - COMPLETE	1

4.6 Deck Gearbox - Option #2 - 215180

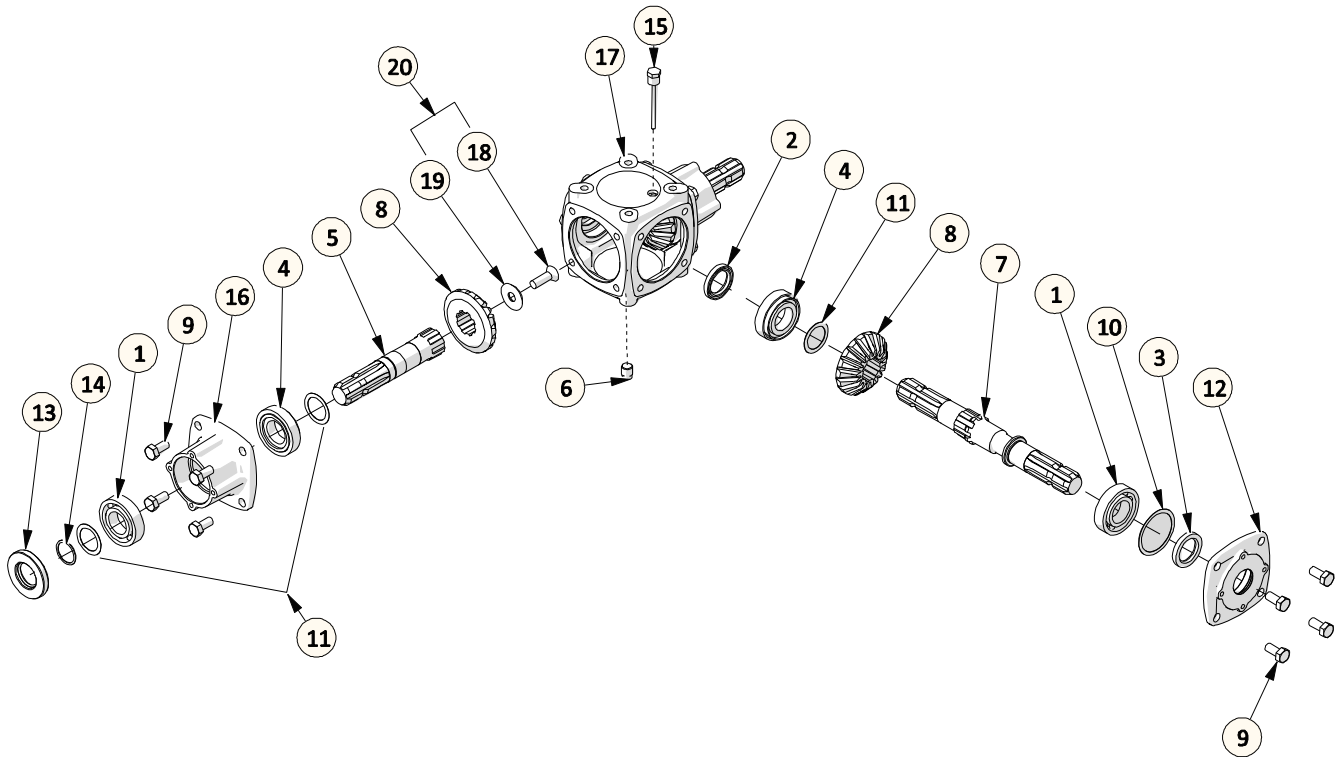
Internal parts are not interchangeable with 521432 gearbox



ITEM	PART #	DESCRIPTION	QTY
1	521130	CASTLE NUT - M24	1
2	521129	WASHER KIT (3PCS)	1
3	521440	OIL SEAL BOTTOM	1
4	521442	BEARING - TAPERED	2
5	521116	BEARING - ROLLER	1
6	521443	CAP	1
7	521362	BEARING - TAPERED	1
8	521127	OIL SEAL	1
9	215182	BREATHER	1
10	215181	DIPSTICK	1
11	215180	GEAR BOX DECK	1

4.7 4-Way Gear Box – Option#1 – 521497

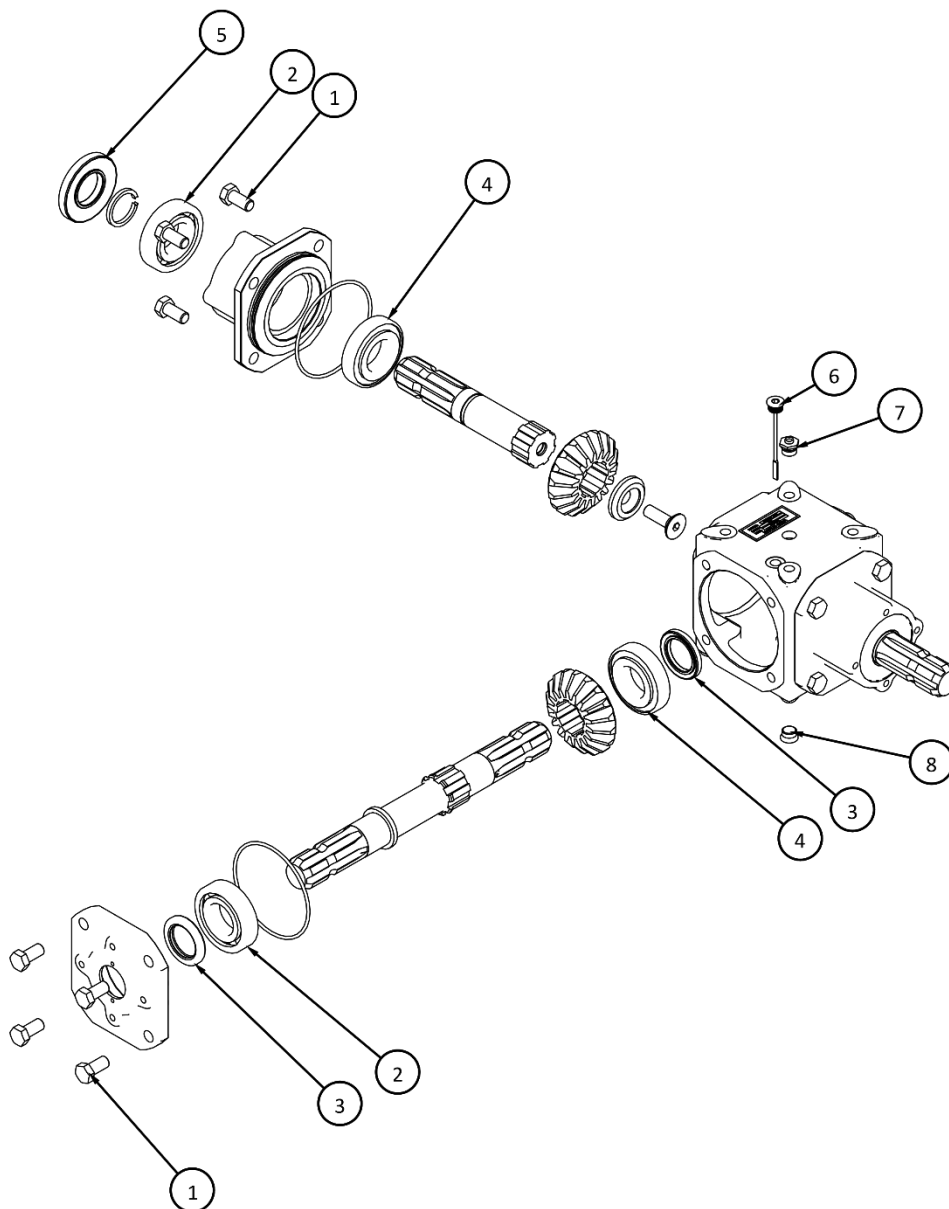
Internal parts are not interchangeable with 215150 gearbox



ITEM	PART #	DESCRIPTION	QTY
1	521116	BEARING - 6207	3
2	521120	OIL SEAL	1
3	521120	OIL SEAL	1
4	521362	BEARING - TAPER ROLLER - 7207E	3
5	521481	STUB EXTENSION SHAFT	2
6	521482	HEX PIPE PLUG	1
7	521486	THRU SHAFT	1
8	521487	GEAR (Z18 M5)	3
9	521488	BOLT - M12 X 25 - 8.8 KIT (6 PCS)	2
10	521491	SHIM KIT (3 PCS)	1
11	521794	SHIM KIT - 3 PCS	1
12	521797	COVER	1
13	521127	OIL SEAL	2
14	521137	SNAP RING	1
15	521489	DIPSTICK	1
16	521796	EXTENSION HOUSING	2
17	521483	HOUSING	1
18	-	HEX COUNTERSUNK BOLT - M12 X 40	2
19	-	WASHER	2
20	522426	GEARBOX SHAFT BOLT KIT	1

4.8 4-Way Gear Box – Option#2 - 215150

Internal parts are not interchangeable with 521497 gearbox



ITEM	PART #	DESCRIPTION	QTY
1	521488	BOLT - M12 X 25 8.8 (6PCS)	12
2	521116	BEARING	3
3	215151	OIL SEAL	2
4	521362	BEARING - CUP & CONE	3
5	521127	OIL SEAL	2
6	215152	DIPSTICK	1
7	215153	BREATHER	1
8	215154	PLUG 9/16 UNF	1
9	215150	GEAR BOX 4 WAY	1

5 Decals

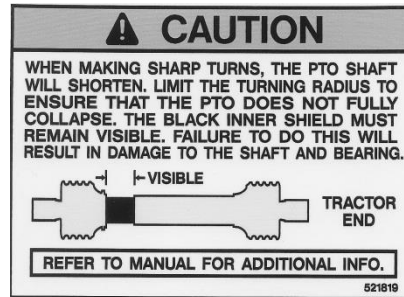
5.1 Safety

If decals become faded, damaged, or lost, replace immediately. Order decal according to corresponding Part # below. Complete decal kits are also available.

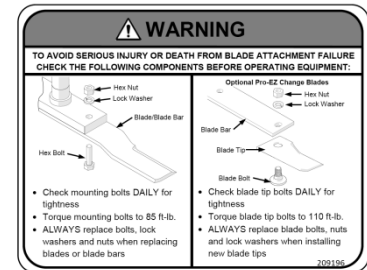
TDR-26 DECAL KIT - 530040



209175
DECAL – GENERAL SAFETY



521819
DECAL – CAUTION



209196
DECAL – BLADE
HARDWARE



209113
DECAL – REPLACE SHIELDS



521820
DECAL – CAUTION



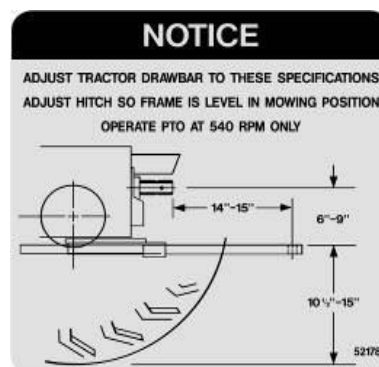
521817
DECAL – PROGRESSIVE
TURF

PROGRESSIVE

209103
DECAL – “PROGRESSIVE”



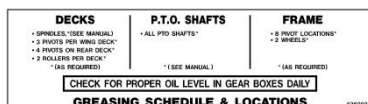
209115
DECAL – OEM PARTS



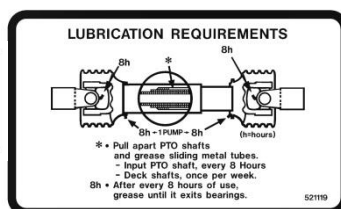
521784
DECAL – NOTICE



209173
DECAL – ROTATING BLADE
DANGER



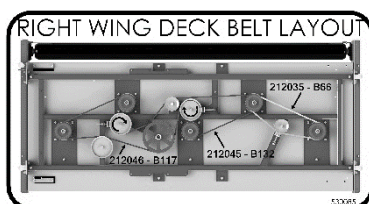
526003
DECAL – GREASING
SCHEDULE



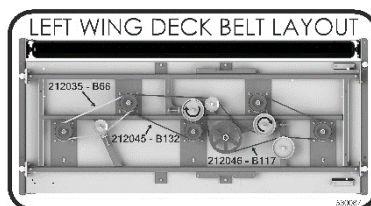
521119
8HR DECAL – PTO GREASE

TDR-26 ROLLER MOWER

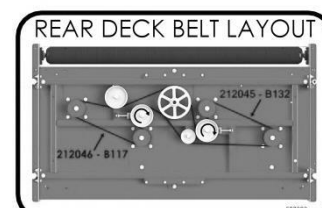
209197
DECAL – TDR 26 ROLLER
MOWER



530085
RH WING DECK
BELT LAYOUT



530087
LH WING DECK BELT
LAYOUT



527521
REAR DECK BELT
LAYOUT



210239
DECAL – INNER GUARD



521455
DECAL – OUTER SHIELD



210238
DECAL – CE WARNING



521014
DECAL – GREASE GUN

5.2 Notes

This image shows a single sheet of white paper with horizontal ruling lines. The lines are evenly spaced and run across the width of the page. There are no margins, text, or other markings on the paper.