

# MAGNUM BR SOD HARVESTER PARTS MANUAL



Bucyrus Equipment Co., Inc.  
Box 156, 209 Central Ave.  
Hillsdale, Ks 66036  
1-800-330-0857  
[www.magnumenp.com](http://www.magnumenp.com)

RE-ORDER NUMBER: BRPTSMANUAL  
REVISION: BRM-100017





## **MAGNUM BR SOD HARVESTER PARTS MANUAL**

The purpose of this manual is for parts identification of the Magnum BR sod harvester. This manual is not to be used for assembly. This manual includes parts lists and illustrations of all available replacement parts for the Magnum BR harvesters. A table of contents is placed at the beginning of the manual for location of specific parts. Keep this manual available for reference in the shop area.

At the time of publication all information contained in this manual was technically correct. However, all materials and specifications are subject to change without notice.

Comments and suggestions about this manual may be directed to: Bucyrus Equipment Co., Inc., PO Box 156-209 Main, Hillsdale, KS 66036. Phone 1-800-330-0857

©Copyright 2005 BECI. All information contained within this publication is based on the latest product information at the time of publication. Due to constant improvements in the design and quality of production components, some minor discrepancies may result between the actual vehicle and the information presented in this publication. Depictions and/or procedures in this publication are intended for reference use only. No liability can be accepted for omissions or inaccuracies. Any reprinting or reuse of the depictions and/or procedures contained within, whether whole or in part, is expressly prohibited. Printed in U.S.A.

## TABLE OF CONTENTS

Section 1 .....	32/42/48 Floating Heads
Section 2 .....	42/48 Solid Heads / Coulter Option
Section 3 .....	30 Solid Heads / Coulter Option
Section 4 .....	Depth Control
Section 5 .....	1 <sup>st</sup> & 2 <sup>ND</sup> Conveyor
Section 6 .....	Wheel and Cooler
Section 7 .....	Electrical Components
Section 8 .....	Hydraulics
Section 9 .....	Increaser Pump
Section 10 .....	Dual Kit
Section 11 .....	Decals

## WHEEL & COOLER

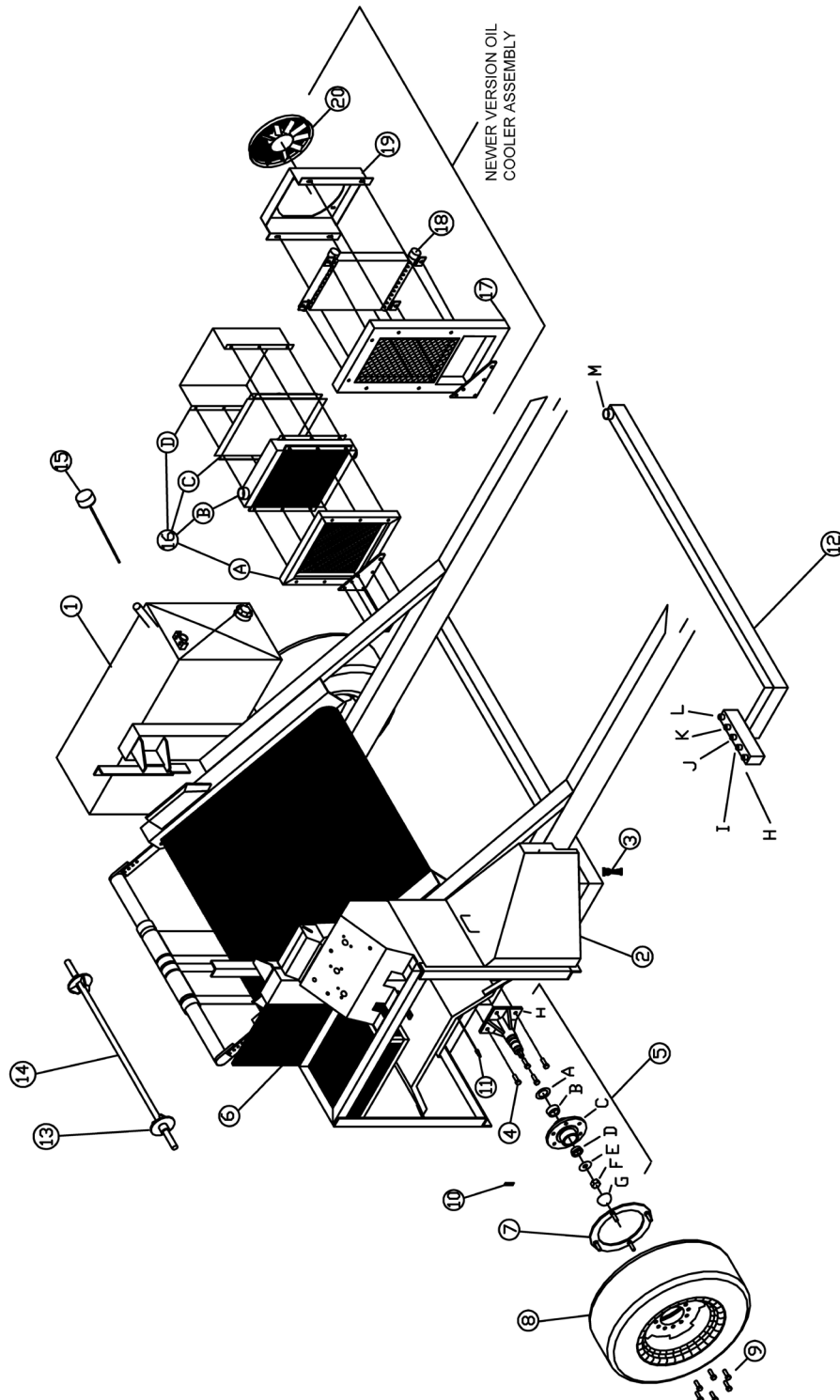
### Parts List

ITEM	QTY	PART NUMBER	DESCRIPTION
1	1	1A100A	50 Gallon hydraulic reservoir
	2	15210	1/2"-13 X 1 3/4" CAPSCREW, GR 8
	2	13209	1/2"-13 X 1 1/2" CAPSCREW PT
	2	33861	1/2" FLAT WASHER
2	1	2336A0	Shield for hydraulics
3	1	35-M	Shield latch
4	8	15210	1/2"-13 X 1 3/4" CAPSCREW, GR 8
	8	33895	1/2" Yellow Zinc Finish High Alloy Medium Split Lock Washer
5	2	W888	Complete hub assembly including spindle
5A	2	W001	Dust seal
5B	2	W002	Cone bearing
5C	2	W003	Six hole hub
5D	2	W004	Cone bearing
5E	2	W005	Flat washer
5F	2	W006	Spindle nut
5G	2	W007	Dust cap
5H	2	W888A	Spindle
6	1		Mesh shield
7	1	RW3000	Magnet Ring
8	2	TR-WHR900	275R15 Tire and rim
9	12	12LUG	1/2" Lug bolts
10	7	10012	Magnet
11	1	13609-3ASSM	Counter Ground speed switch
12	1	42TR-MF125	Hydraulic manifold
H	1	2404-10-12	Hydraulic fitting-3/4" pipe port
I	1	2404-12-12	Hydraulic fitting-3/4" pipe port
J	1	2404-10-12	Hydraulic fitting-3/4" pipe port
K	1	2501-6-12	Hydraulic fitting-3/4" pipe port
L	1	2404-10-12	Hydraulic fitting-3/4" pipe port
M	1	STC-15	Hydraulic fitting-1 1/4" pipe port
13	1	18A340	Netting cone
14	1	1B012	Netting axle
15	1	DS100	Dipstick
16	1	OILCO	Hydraulic cooler unit
16A	1	OILFRM	Hydraulic cooler frame
16B	1	OILCLR	Hydraulic cooler
16C	1	OILFAN	Hydraulic cooler fan
16D	1	OILSHLD	Hydraulic cooler shield
NOTE: Items 17 thru 20 are the Newer Version Oil Cooler Fan Assembly			
17	1	TR-CF100	Cooling Fan Frame



## WHEEL & COOLER

18	1	65032-2	Oil cooler
19	1	TR-CF200	Cooling Fan Shield
20	1	OILFAN	Hydraulic Cooler Fan
21	1	65125	3/16" x 1-1/2" Zinc Finish Extended Prong Cotter Pin



## This image shows a full page of blank handwriting practice paper. It features multiple sets of horizontal lines, each consisting of three parallel lines: two outer blue lines and a central red line. These sets are repeated down the entire page to provide guides for letter height and placement. The background is white, and there are no margins or other markings present.