

MAGNUM M SERIES DIESEL SOD INSTALLER PARTS MANUAL



**MAGNUM M4226D
MAGNUM M4826D**

Bucyrus Equipment Co., Inc.
Box 156, 209 Main
Hillsdale, Ks 66036
1-800-330-0857
www.magnumenp.com

RE-ORDER NUMBER: IND-MANUAL
REVISION: IN-100007



M SERIES

MAGNUM M4226D / M4826D PARTS MANUAL

The purpose of this manual is for parts identification of the Magnum M series sod installer. This manual is not to be used for assembly. This manual includes parts lists and illustrations of all available replacement parts for the Magnum M series sod installer. A table of contents is placed at the beginning of the manual for location of specific parts. Keep this manual available for reference in the shop area.

At the time of publication all information contained in this manual was technically correct. However, all materials and specifications are subject to change without notice.

Comments and suggestions about this manual may be directed to: Bucyrus Equipment Co., Inc., PO Box 156-209 Main, Hillsdale, KS 66036. Phone 1-800-330-0857

© Copyright 2013 BECI. All information contained within this publication is based on the latest product information at the time of publication. Due to constant improvements in the design and quality of production components, some minor discrepancies may result between the actual vehicle and the information presented in this publication. Depictions and/or procedures in this publication are intended for reference use only. No liability can be accepted for omissions or inaccuracies. Any reprinting or reuse of the depictions and/or procedures contained within, whether whole or in part, is expressly prohibited. Printed in U.S.A.

TABLE OF CONTENTS

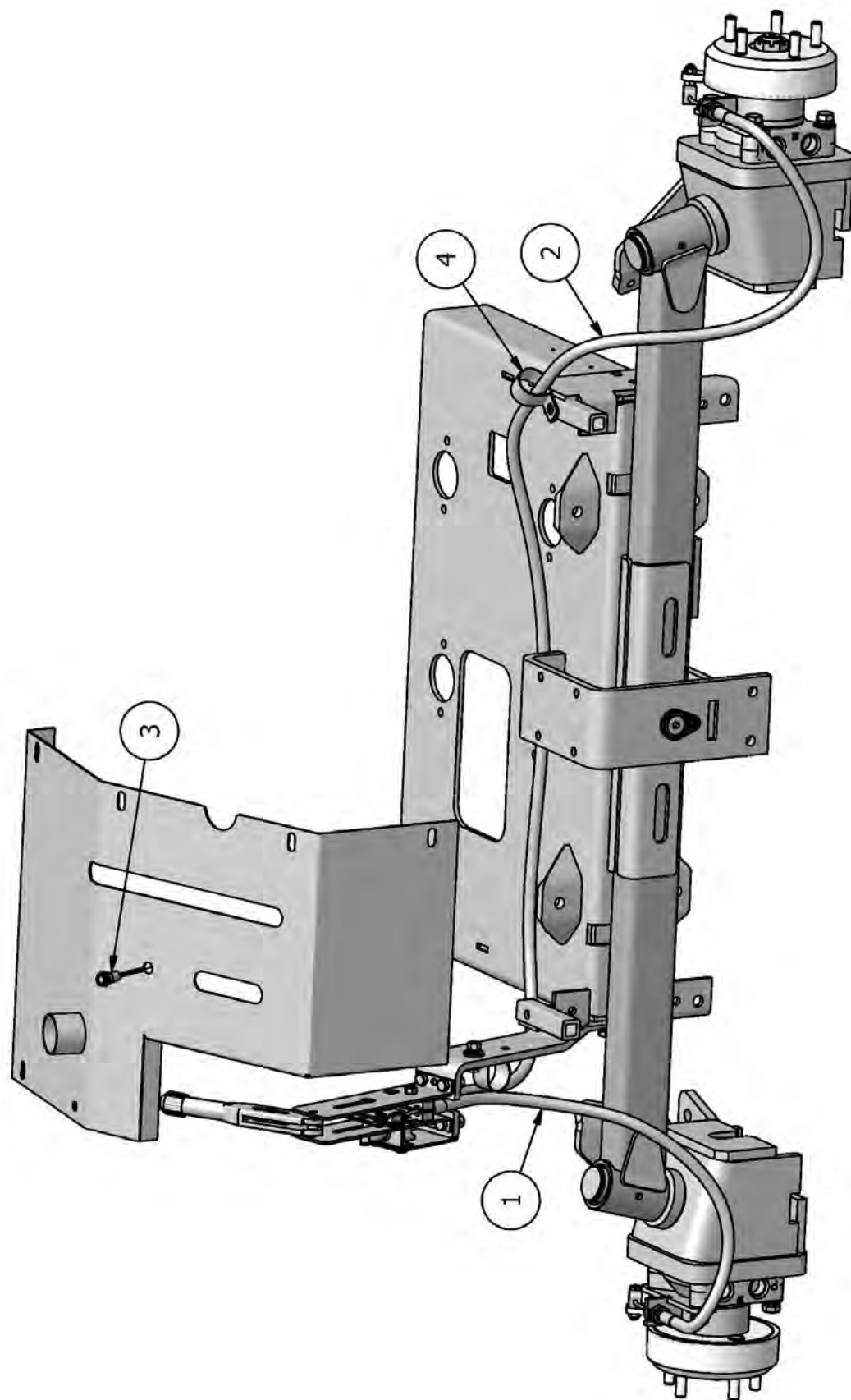
Section 1	Brake / Wheel / Hub
Section 2	Decals
Section 3	Electrical
Section 4	Engine
Section 5	Front Spindle
Section 6	Hydraulics
Section 7	Hydrostat / Roll Lift Controls
Section 8	Operator Platform
Section 9	Roll Lift
Section 10	Shields
Section 11	Steering Axle

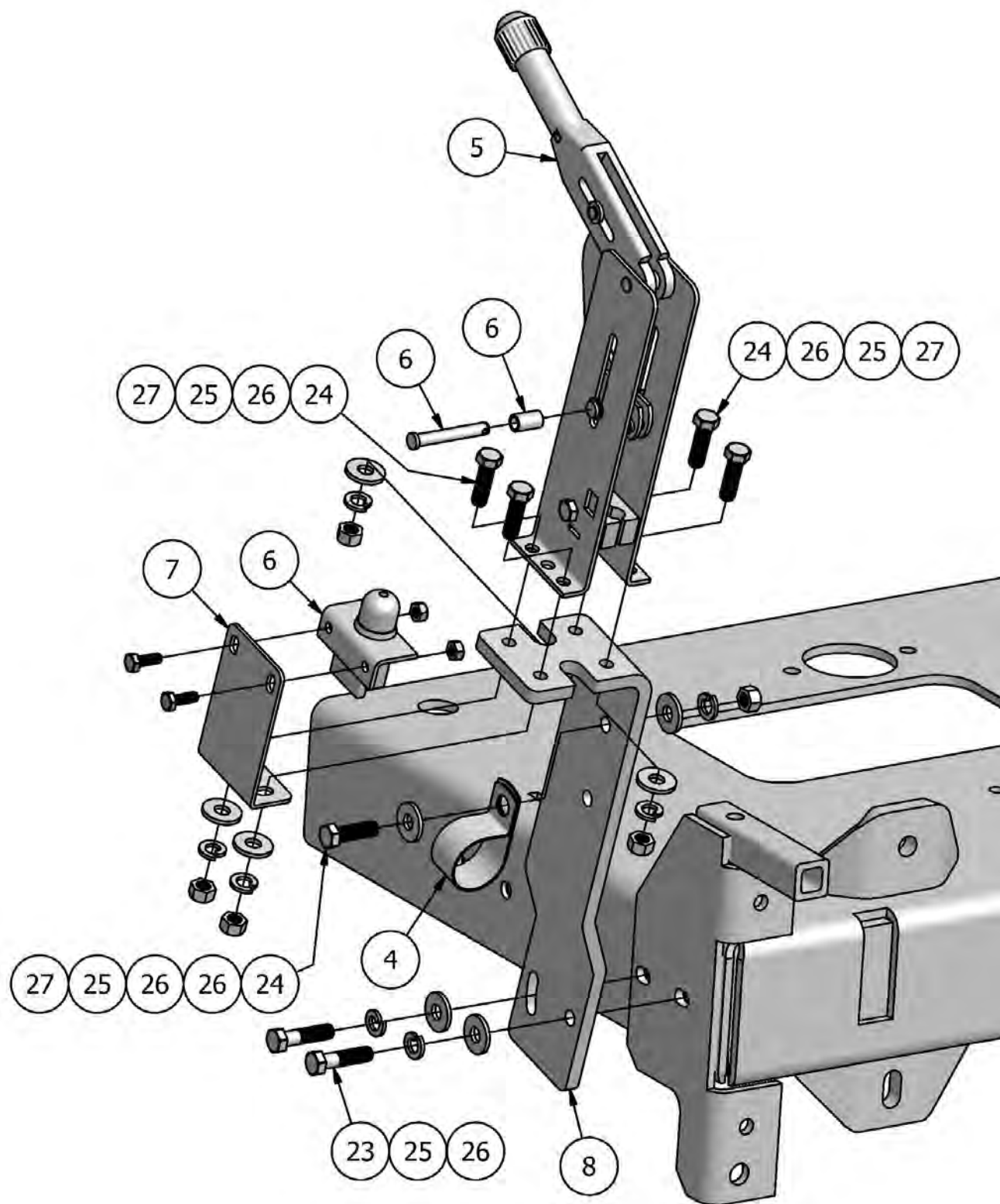


BRAKE, WHEEL, & HUB

BRAKE, WHEEL, HUB - PARTS LIST			
ITEM	QTY	PART NUMBER	DESCRIPTION
1	1	IN-CBL301	BRAKE CABLE - SHORT
2	1	IND-CBL301	BRAKE CABLE - LONG
3	1	Q14F3	RED FLASHING INDICATOR LIGHT
4	2	110708815	1-1/2" P-CLAMP
5	1	165-508-023	BRAKE LEVER
6	1	B826	BRAKE INDICATOR SWITCH
7	1	IN-BR102	BRAKE INDICATOR SWITCH MOUNT
8	1	IN-BR101	BRAKE LEVER MOUNT
9	2	151H3097	DRIVE MOTOR, CCW, LHS
10	2	IN-RSP112	BRAKE CABLE MOUNT
11	2	HGB-BEW5-3X	PARKING BRAKE SHOE ASSEMBLY (NO LONGER AVAILABLE SEE VERSION 2)
12	2	151H3087	DRIVE MOTOR, CW, RHS
13	2	72102	WHEEL HUB
14	4	135845-70	29-1250X15 TURF TIRE
15	4	IN-WHR100	RIM
16	4	90-415-9	VALVE STEM
17	20	30422	1/2"-20 LUG NUT
18	4	13217	1/2"-13 X 3" CAPSCREW PT
19	4	13214	1/2"-13 X 2-3/4" CAPSCREW PT
20	8	13212	1/2"-13 X 2-1/4" CAPSCREW PT
21	16	33895	1/2" LOCK WASHER
22	16	33817	1/2" SAE WASHER
23	2	110120346	3/8"-16 X 1-1/2" CAPSCREW PT
24	5	13107	3/8"-16 X 1-1/4" CAPSCREW
25	7	33893	3/8" LOCK WASHER
26	8	33859	3/8" FLAT WASHER
27	5	36306	3/8"-16 HEX NUT
28	2	15059	5/16"-18 X 1-1/2" CAPSCREW PT GR8
29	8	13055	5/16"-18 X 1" CAPSCREW
30	8	33892	5/16" LOCK WASHER
31	2	36304	5/16"-18 HEX NUT
32	2	37262	5/16"-18 LOCK NUT
38	2	HGB-DEXX-X5	BRAKE DRUM (NO LONGER AVAILABLE SEE VERSION 2)
39	4	33445	1"-14 GA. WASHER
40	1	IN-RSP115L	BRAKE CABLE MOUNT, LEFT
41	1	IN-RSP115R	BRAKE CABLE MOUNT, RIGHT
42	2	800149-020	BRAKE SHOE ASSEMBLY
43	2	850226-010	BRAKE DRUM
44	2	0156739	5/16" X 1" CLEVIS PIN
45	2	65078	1/8" COTTER PIN

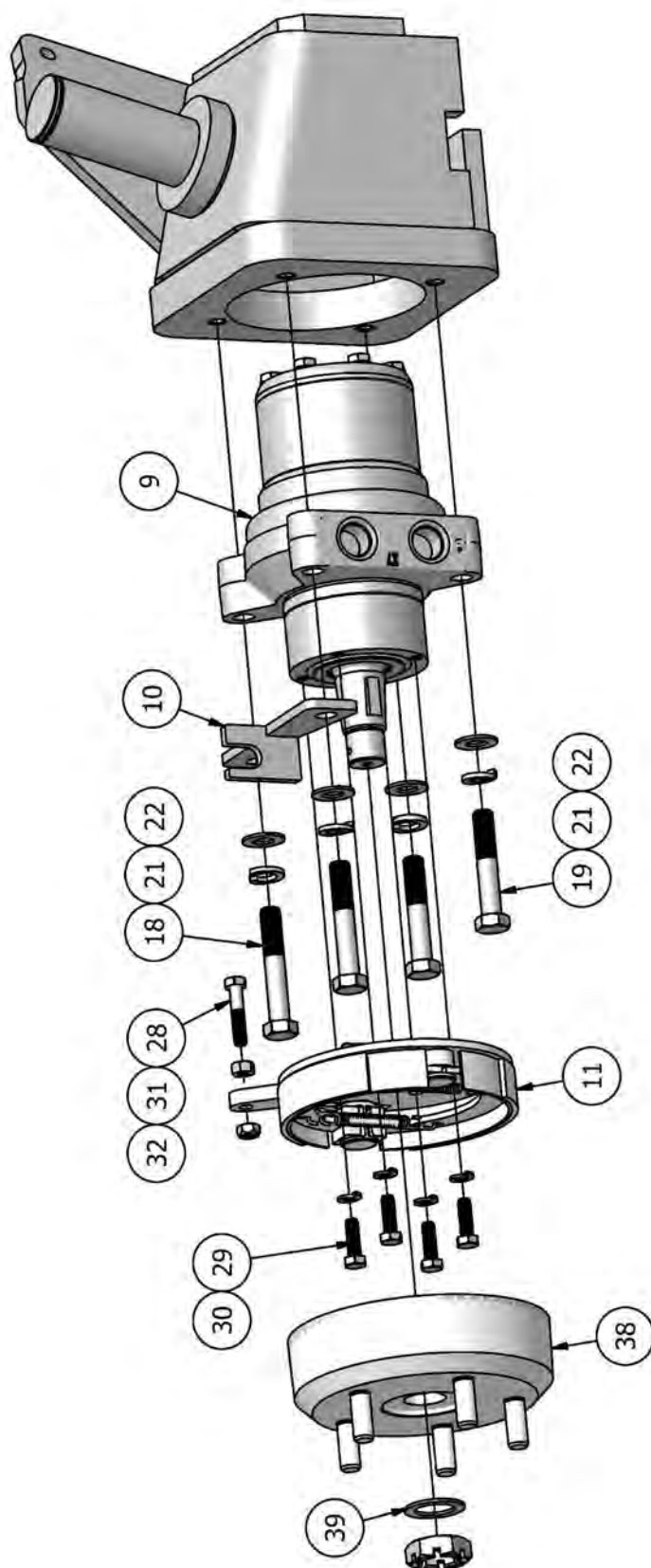




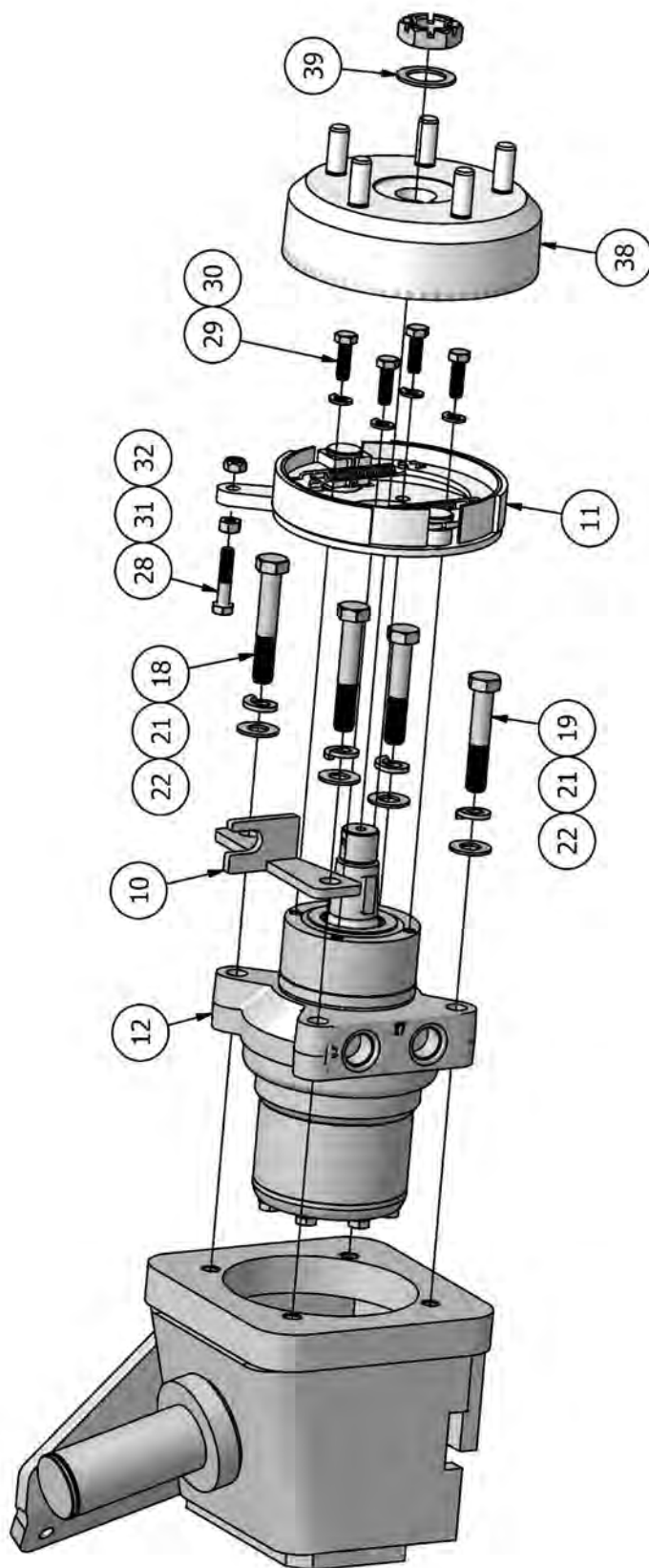


BRAKE, WHEEL, & HUB

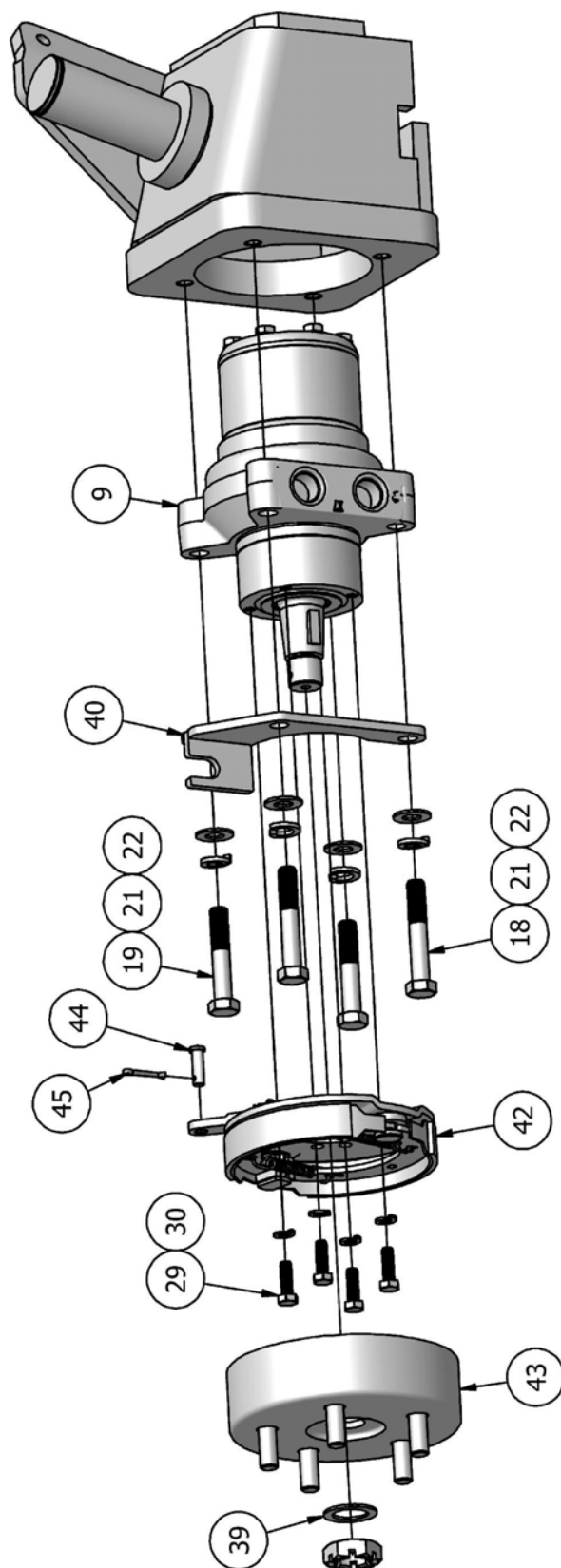
VERSION 1 (SERIAL NO. 1-133)



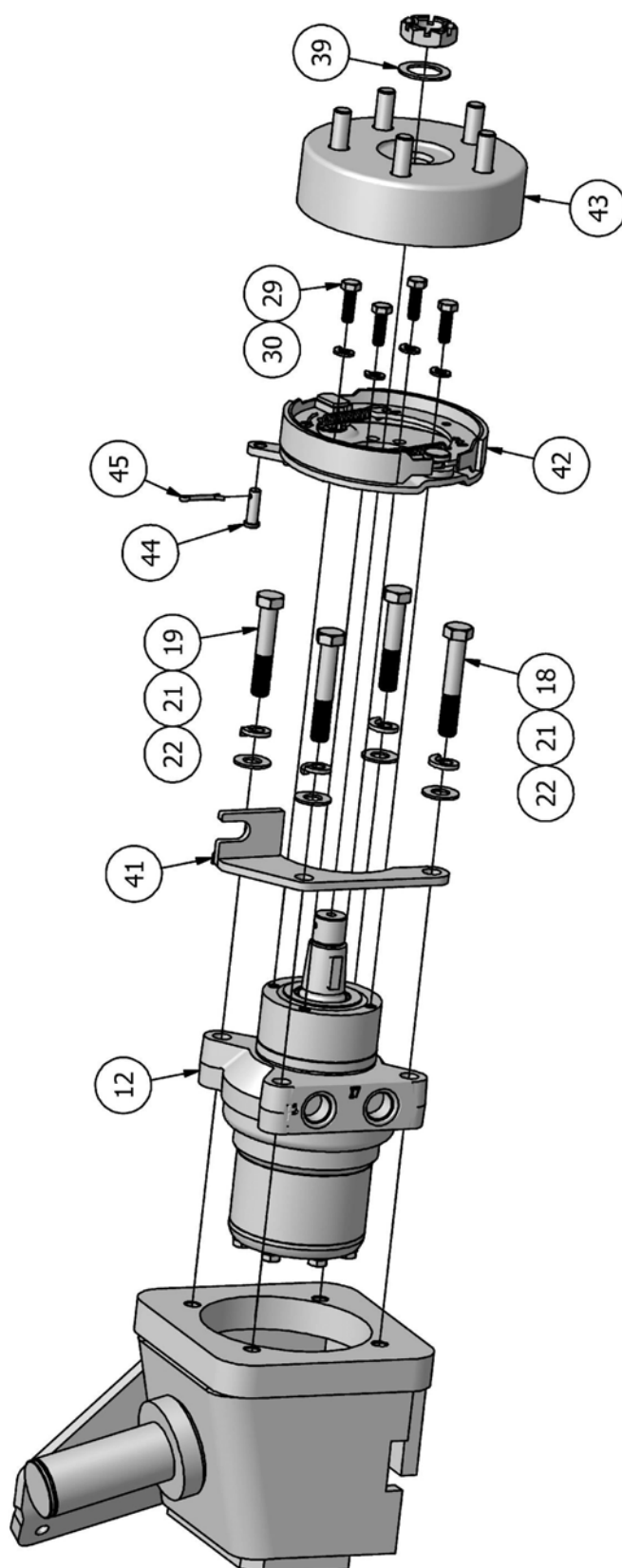
VERSION 1 (SERIAL NO. 1-133)

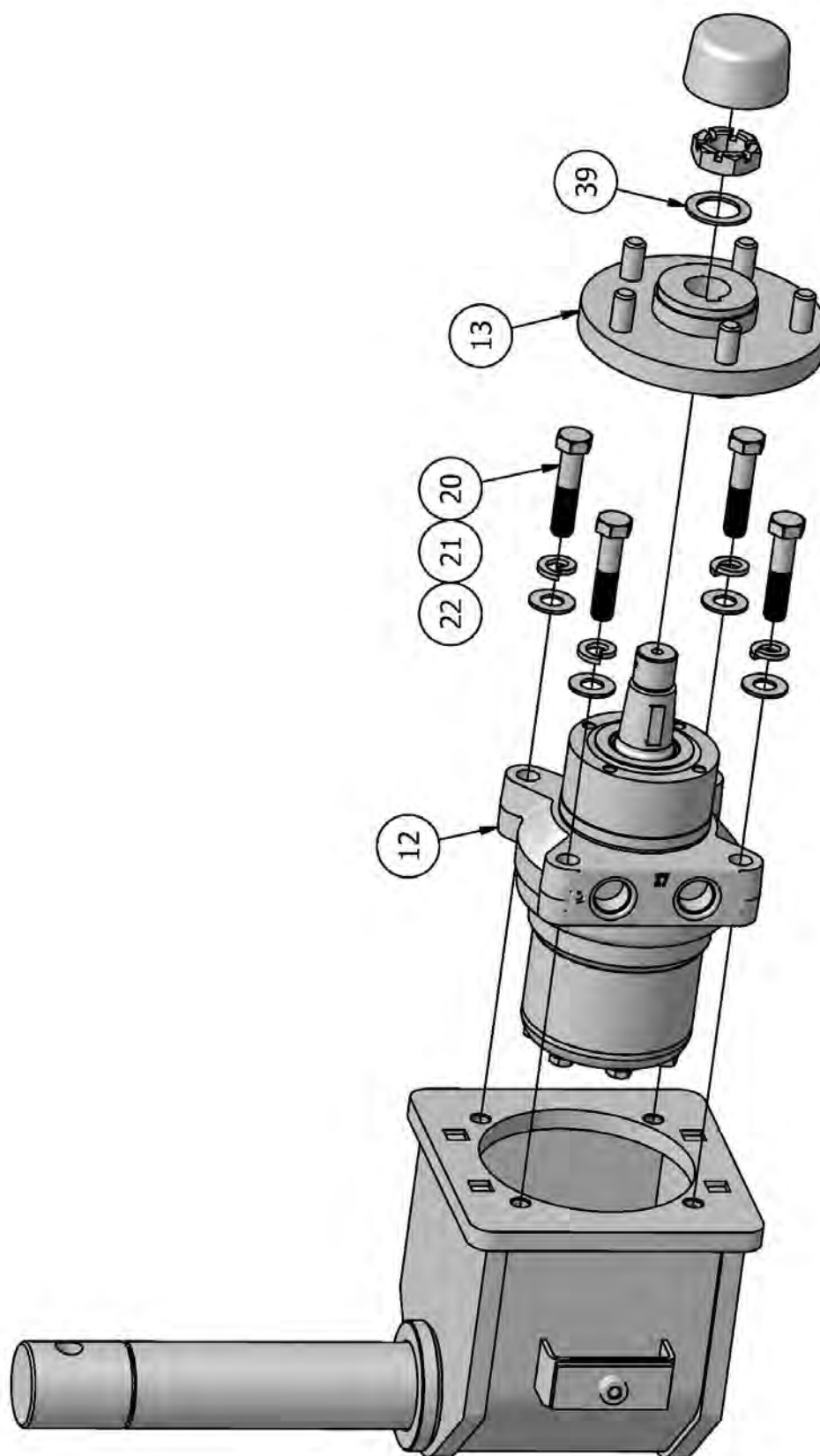


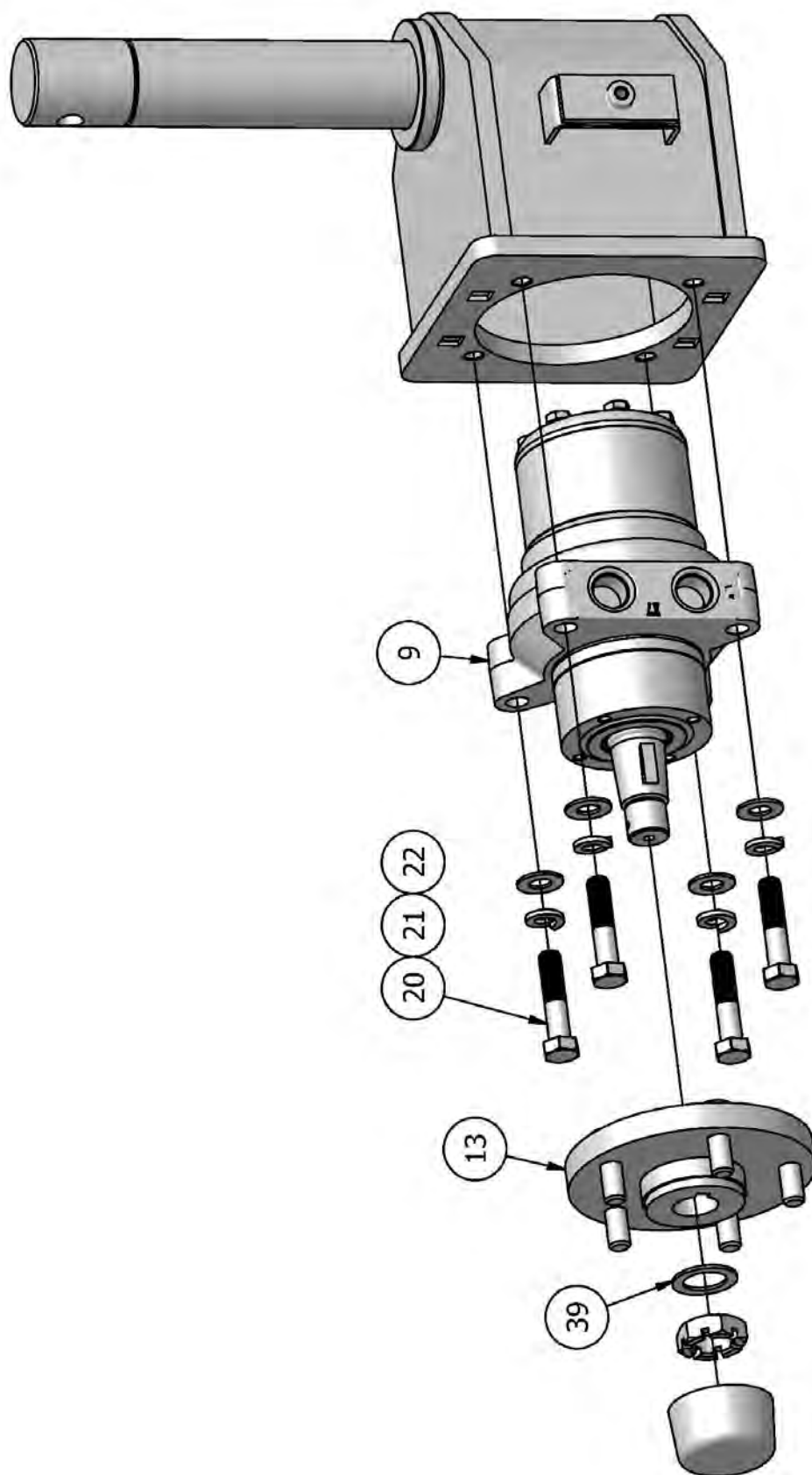
VERSION 2

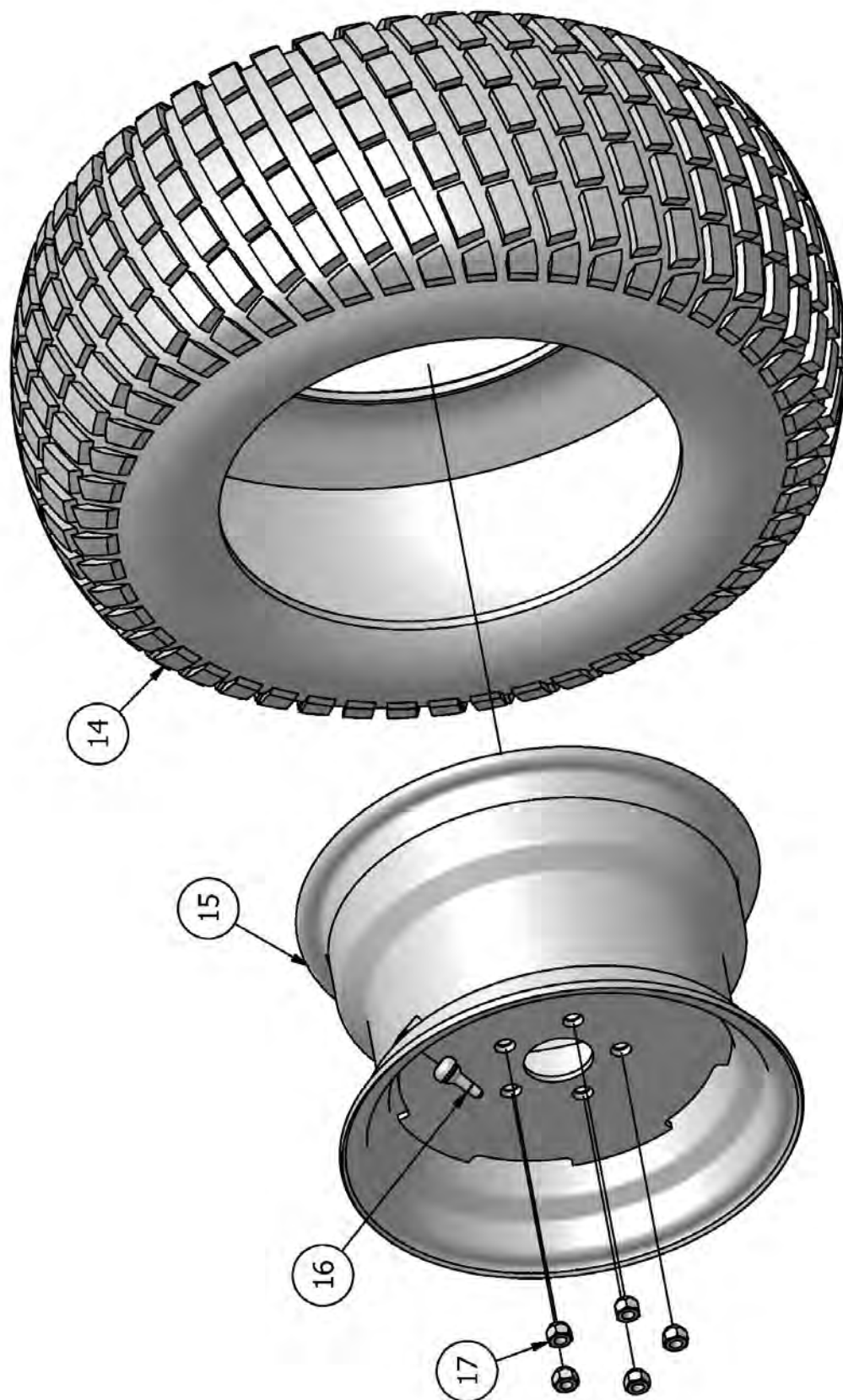


VERSION 2









BRACKET WORK

This image shows a full page of white paper with horizontal blue ruling lines. The lines are evenly spaced and run across the width of the page. There are no margins, text, or other markings on the paper.

