

MAGNUM A SERIES DIESEL SOD INSTALLER PARTS MANUAL



**MAGNUM A42D
MAGNUM A48D**

Bucyrus Equipment Co., Inc.
Box 156, 209 Main
Hillsdale, Ks 66036
1-800-330-0857
www.magnumenp.com

RE-ORDER NUMBER: 2IND-MANUAL
REVISION: 2IND-100010



A SERIES

MAGNUM A42D / A48D PARTS MANUAL

The purpose of this manual is for parts identification of the Magnum A series sod installer. This manual is not to be used for assembly. This manual includes parts lists and illustrations of all available replacement parts for the Magnum A series sod installer. A table of contents is placed at the beginning of the manual for location of specific parts. Keep this manual available for reference in the shop area.

At the time of publication all information contained in this manual was technically correct. However, all materials and specifications are subject to change without notice.

Comments and suggestions about this manual may be directed to: Bucyrus Equipment Co., Inc., PO Box 156-209 Main, Hillsdale, KS 66036. Phone 1-800-330-0857

© Copyright 2013 BECI. All information contained within this publication is based on the latest product information at the time of publication. Due to constant improvements in the design and quality of production components, some minor discrepancies may result between the actual vehicle and the information presented in this publication. Depictions and/or procedures in this publication are intended for reference use only. No liability can be accepted for omissions or inaccuracies. Any reprinting or reuse of the depictions and/or procedures contained within, whether whole or in part, is expressly prohibited. Printed in U.S.A.

RE-ORDER NUMBER: 2IND-MANUAL
REVISION: 2IND-100010

TABLE OF CONTENTS

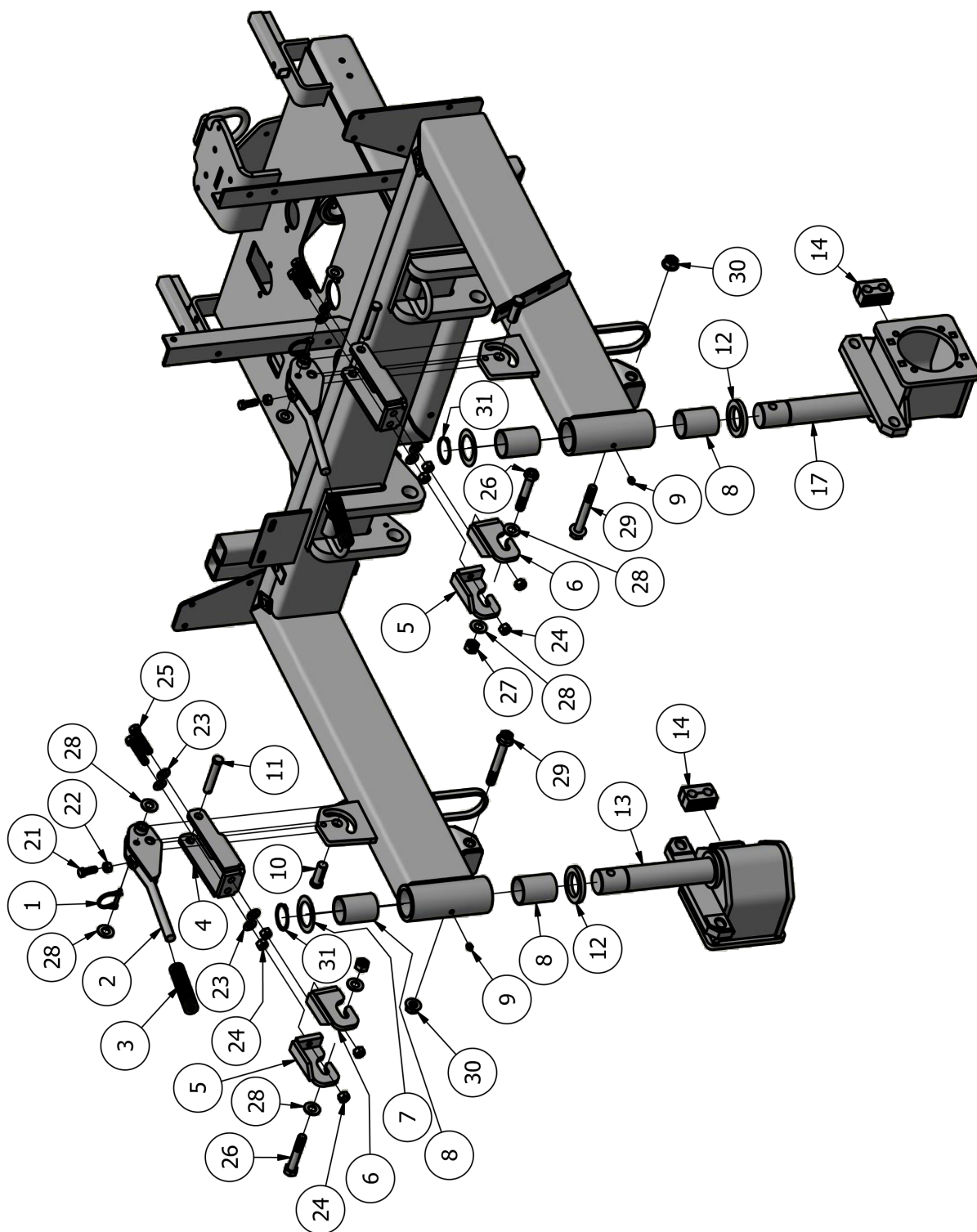
Section 1	BRAKE, WHEEL, & HUB
Section 2	DECALS
Section 3	ELECTRICAL
Section 4	ENGINE
Section 5	FRONT SPENDLE
Section 6	HYDRALICS
Section 7	HYDROSTAT ROLL LIFT CONTROL
Section 8	OPERATORS PLATFORM
Section 9	ROLL LIFT
Section 10	SHIELDS
Section 11	STEERING AXLE

**MAG A42D & A48D
FRONT SPINDLE**

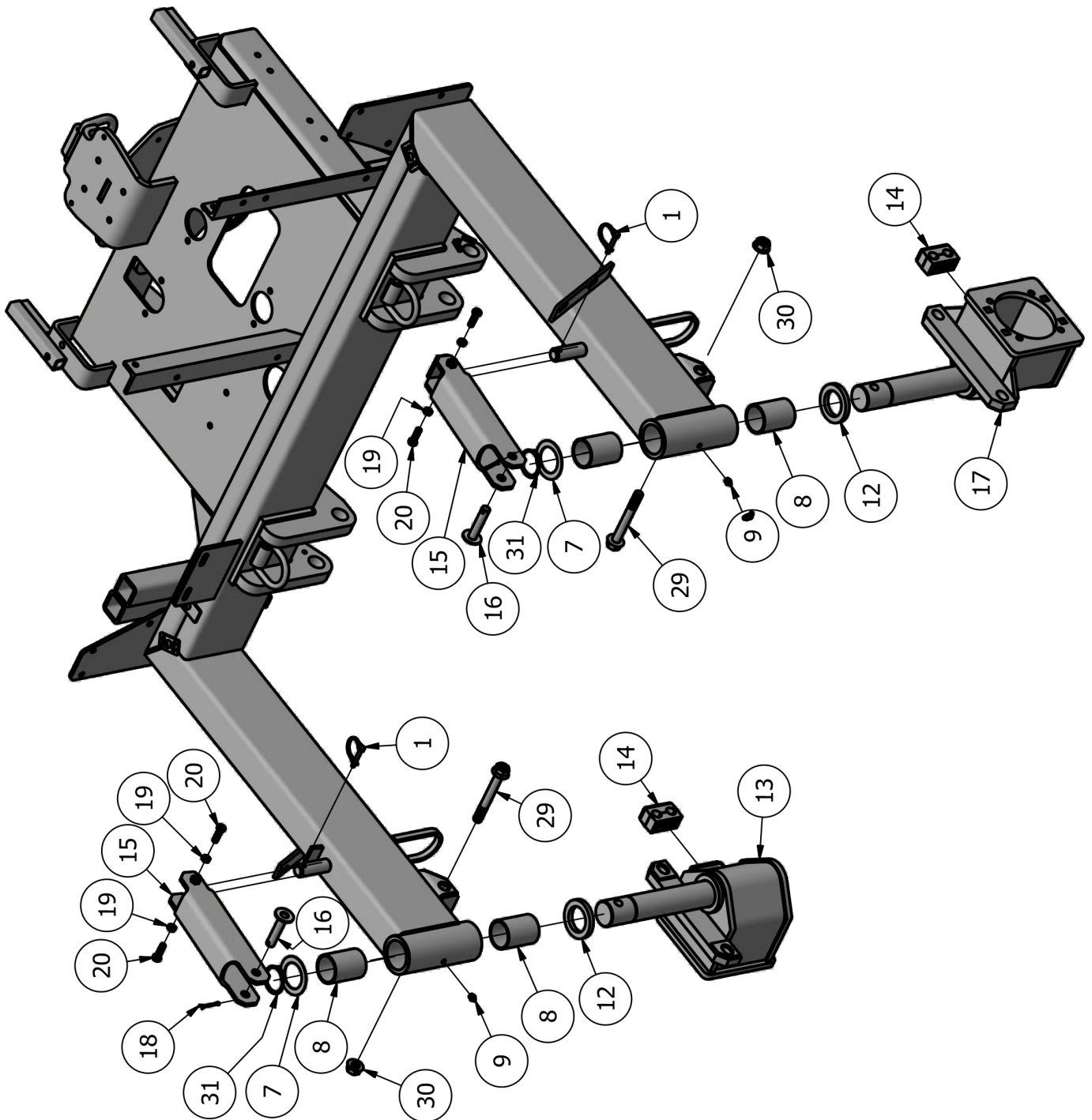
FRONT SPINDLES - Parts List

ITEM	QTY	PART NUMBER	DESCRIPTION
1	2	P7950	1/4" SNAP PIN
2	2	2IND-FSP101	FRONT SPINDLE LATCH LEVER
3	2	97045K48	GRIP, 3/4" DIAMETER
4	2	2IND-FSP200	FRONT SPINDLE LATCH BODY
5	2	2IND-FSP103	FRONT SPINDLE LATCH HOOK
6	2	2IND-FSP102	FRONT SPINDLE LATCH HOOK
7	2	11122123	2" X 18GA MACHINERY BUSHING - PLATED
8	4	IN-FSP200	FRONT SPINDLE BUSHING
9	5	58794	1/8" NPT GREASE FITTING, ST
10	2	98330A370	CLEVIS PIN, 3/4" X 2" LG
11	2	66151	5/8" X 3 1/2" CLEVIS PINT
12	2	2IND-FSP201	FRONT SPINDLE THRUST WASHER
13	1	2IND-FSP100R	FRONT SPINDLE, RHS
14	2	HYDMNT002-SM	1/2" HOSE CLAMP SMOOTH BORE
15	2	IN-FSP110	FRONT SPINDLE LOCK
16	2	IN-FSP113	FRONT WHEEL LOCK PIN
17	1	2IND-FSP100L	FRONT SPINDLE, LHS
18	14	65078	1/8" X 1-1/2" COTTER PIN
19	12	1136256	3/8"-24 JAM NUT
20	4	17107	3/8"-24 X 1 1/4"
21	2	13157	7/16"-14 X 1 1/4" CAPSCREW
22	8	36308	7/16"-14 HEX NUT
23	24	33817	1/2" SAE WASHER
24	8	36310	1/2"-13 HEX NUT
25	4	0144578	1/2"-13 X 2 1/2" CAPSCREW, GR8
26	3	15318	5/8"-11 X 3 3/4" CAPSCREW, PT, GR8
27	3	37216	5/8"-11 REV LOCK NUT
28	8	33819	5/8" SAE WASHER
29	2	92316A814	5/8"-11 X 5" FLANGE BOLT
30	2	0167012	5/8-11 FLANGE NUT
31	2	11568-00440	2" EXTERNAL SNAP RING





FRONT SPINDLES – VERSION 2
SERIAL NUMBER ENDING IN 258 TO CURRENT



MAG A42D & A48D
FRONT SPINDLE

[illegible]