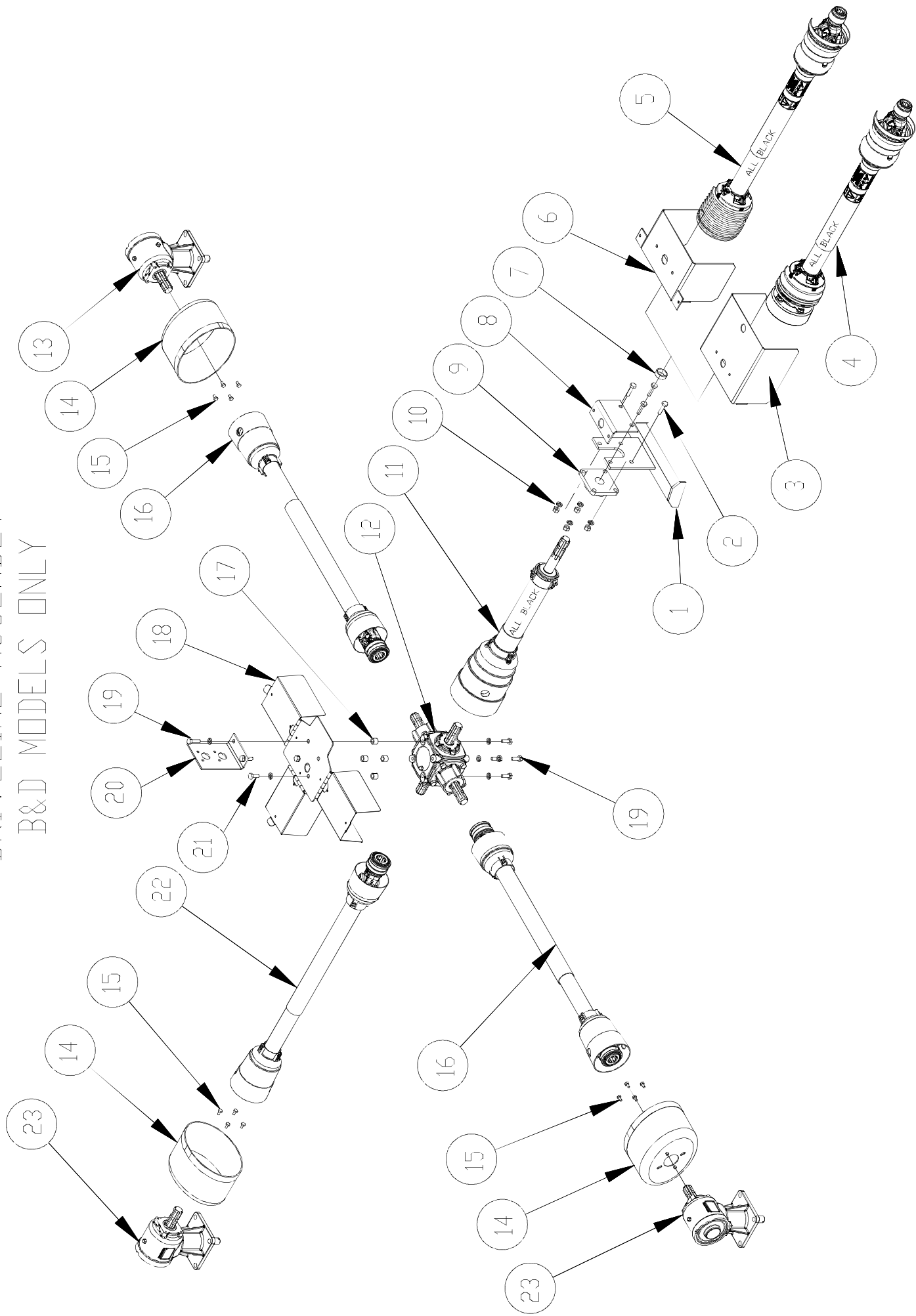
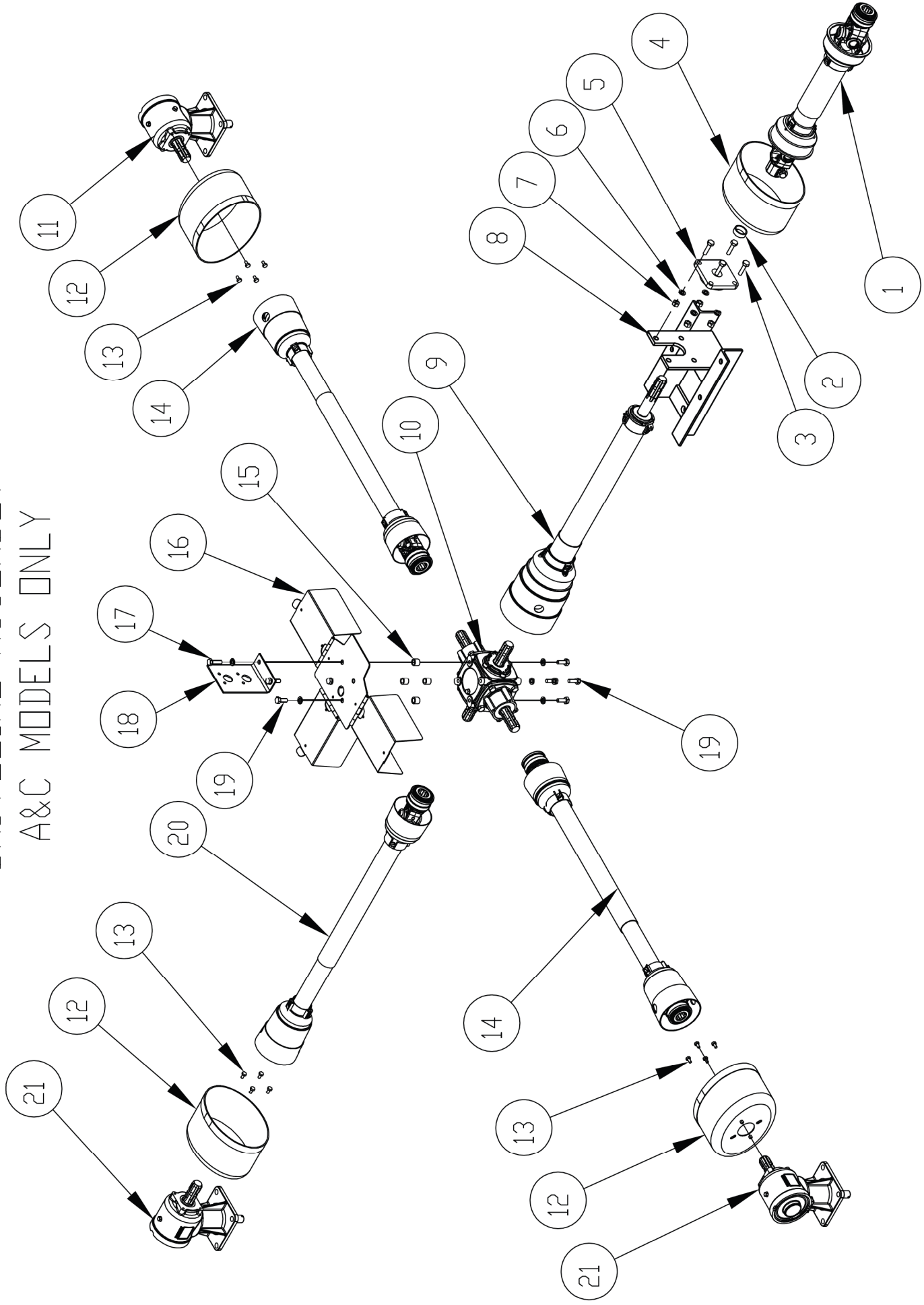


DRIVELINE ASSEMBLY



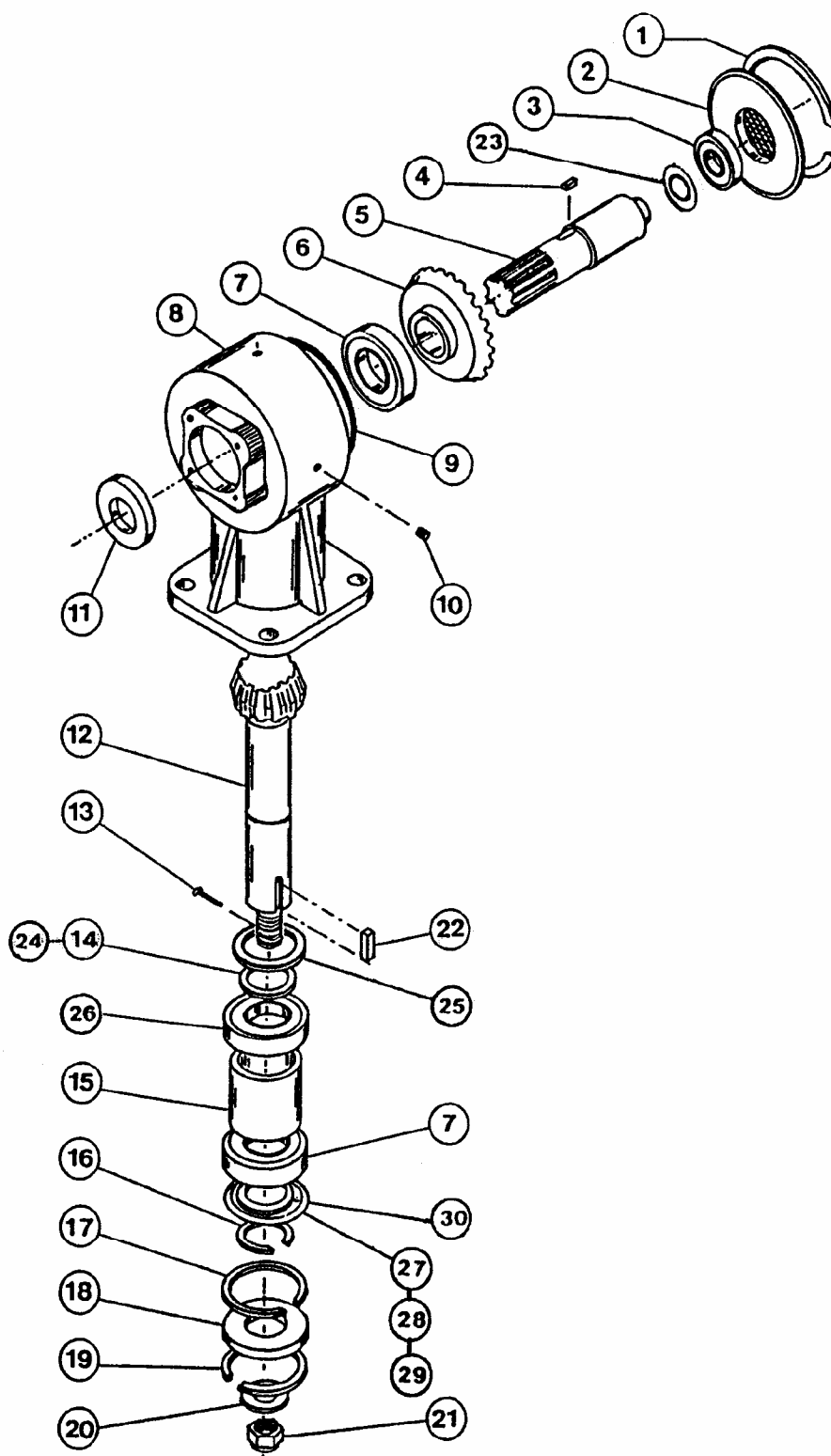
DRIVELINE ASSEMBLY B&D MODELS ONLY			
ITEM NO.	PART NUMBER	DESCRIPTION	QTY.
1	528190	INTERMEDIATE MOUNT	1
2	O.L.	1/2" x 2" GR5 HEX BOLT	1
3	528194	INTERMEDIATE SHIELD, C.V. ,CLUTCH	1
4	210250	INPUT PTO SHAFT, CV, CLUTCH	1
5	210230	INPUT PTO SHAFT, CV (B MODELS)	1
6	600430	INTERMEDIATE SHIELD C.V.	1
7	521789	PTO SPACER - 0.400"	4
8	528439	INTERMEDIATE SHIELD BRACKET	1
9	521323	HOUSED FLANGE BEARING 1 3/8"	4
10	O.L.	1/2" GR5 NUT & LOCKWASHER	4
11	210210	INTERMEDIATE PTO SHAFT	1
12	521497	4-WAY GEARBOX	1
13	521033	DECK GEAR BOX (LEFT WING DECK)	1
14	210061	GEARBOX COUNTER CONE (D MODELS)	3
15	O.L.	M8 x 1.25 x 14mm (D MODELS)	12
16	521718	WING DECK PTO SHAFT	2
17	521197	GEARBOX COVER SPACER	4
18	522463	4-WAY GEARBOX COVER	1
19	O.L.	M12 x 40mm GR 8.8 HEX BOLT, LOCKWASHER	2
20	528287	HOSE MOUNT BRACKET	1
21	O.L.	M12 x 30mm GR 8.8 HEX BOLT, LOCKWASHER	2
22	210190	REAR DECK PTO SHAFT	1
23	521012	DECK GEAR BOX (REAR DECK, & RIGHT WING DECK)	2
NOTE: QUANTITIES ARE FOR ONE COMPLETE MOWER			
O.L. - OBTAIN LOCALLY			

DRIVELINE ASSEMBLY A&C MODELS ONLY



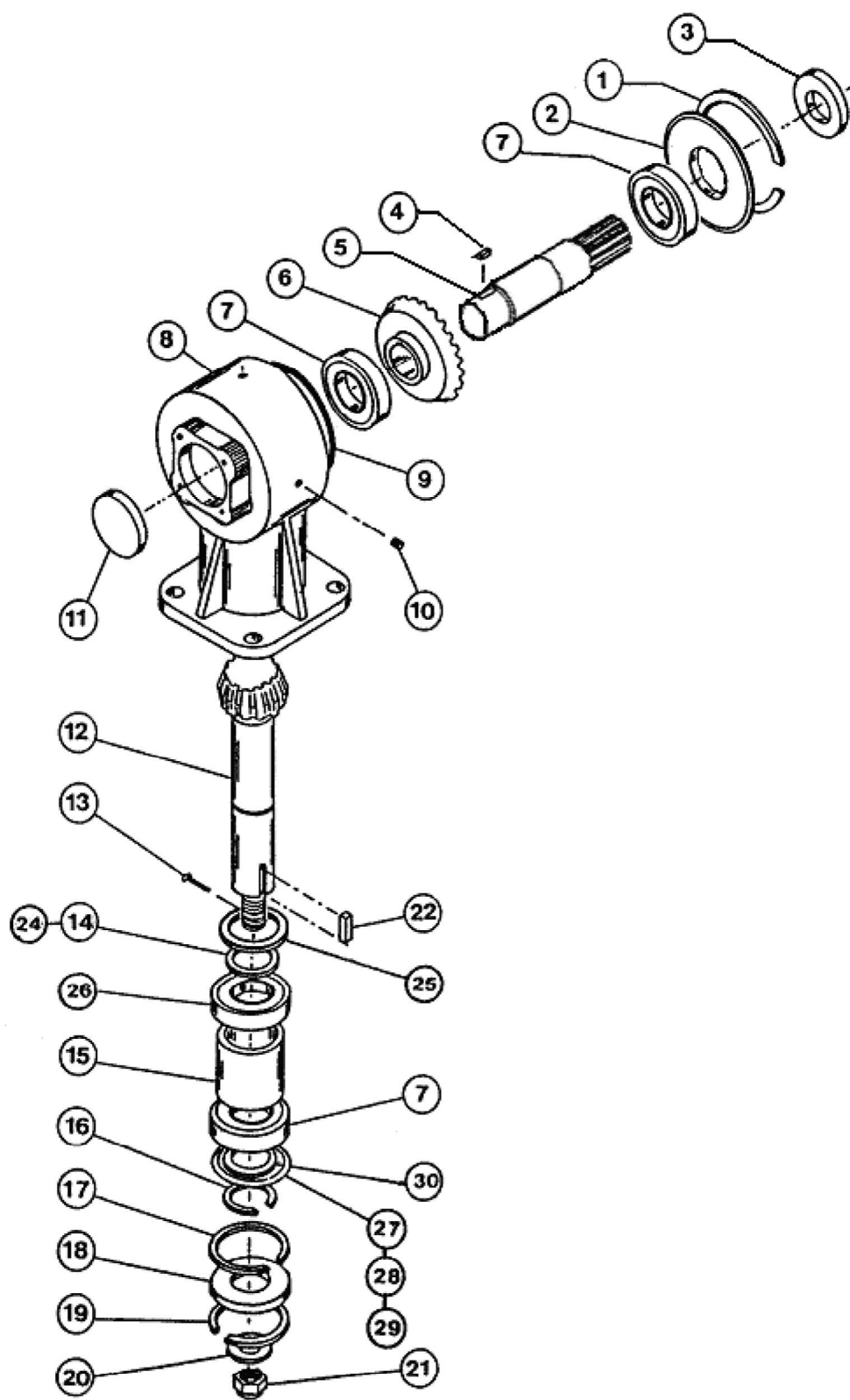
DRIVELINE ASSEMBLY A&C MODELS ONLY			
ITEM NO.	PART NUMBER	DESCRIPTION	QTY.
1	521738	INPUT PTO SHAFT, CV, CLUTCH	1
2	521789	PTO SPACER - 0.400"	1
3	O.L.	1/2" x 1 3/4" GR5 HEX BOLT	4
4	210062	COUNTER CONE (C MODEL ONLY)	1
5	521323	HOUSED FLANGE BEARING 1 3/8"	1
6	O.L.	1/2" LOCKWASHER	4
7	O.L.	1/2" GR5 NUT	4
8	528196	FRONT SHIELD/PTO MOUNT	1
9	521725	INTERMEDIATE PTO SHAFT	1
10	521497	4-WAY GEARBOX	1
11	521033	DECK GEAR BOX (LEFT WING DECK)	1
12	210061	GEARBOX COUNTER CONE (C MODELS)	3
13	O.L.	M8 x 1.25 x 14mm (D MODELS)	12
14	521718	WING DECK PTO SHAFT	2
15	521197	GEARBOX COVER SPACER	4
16	522463	4-WAY GEARBOX COVER	1
17	O.L.	M12 x 40mm GR 8.8 HEX BOLT, LOCKWASHER	2
18	528287	HOSE MOUNT BRACKET	1
19	O.L.	M12 x 30mm GR 8.8 HEX BOLT, LOCKWASHER	2
20	210190	REAR DECK PTO SHAFT	1
21	521012	DECK GEAR BOX (REAR DECK, & RIGHT WING DECK)	2
NOTE: QUANTITIES ARE FOR ONE COMPLETE MOWER			
O.L. - OBTAIN LOCALLY			

DECK GEARBOX REAR DECK AND RIGHT DECK



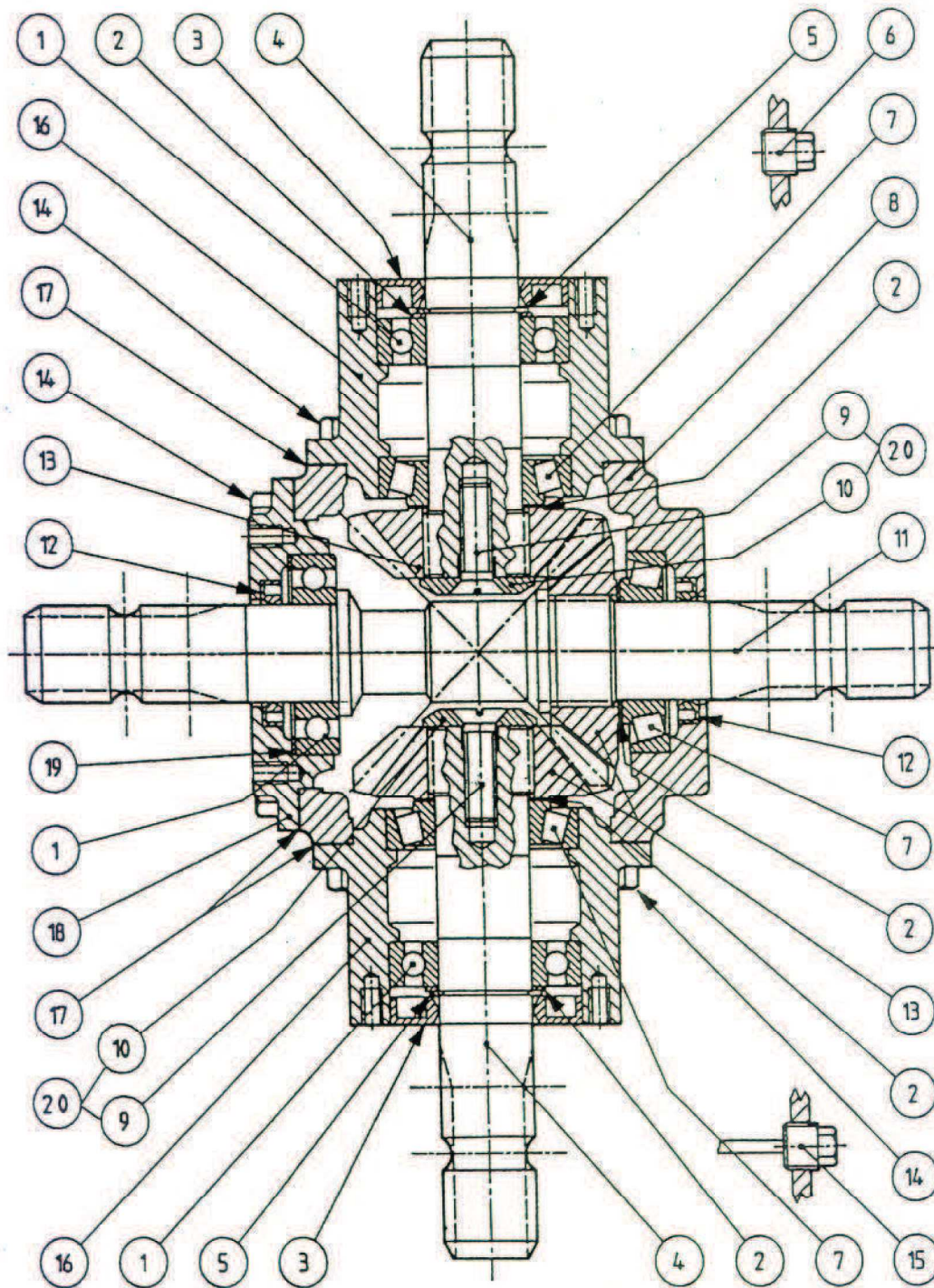
DECK GEARBOX REAR DECK AND RIGHT DECK			
ITEM	PART #	DESCRIPTION	QTY
1	521110	SNAP RING	1
2	521111	COVER PLATE	1
3	521112	BEARING - 6205	1
4	521113	KEY - 10 X 8 X 30	1
5	521114	SHAFT - 1 3/8" X 6 SPLINE	1
6	521115	GEAR	1
7	521116	BEARING - 6207	2
8	521117	CASING	1
9	521118	O - RING	1
10	521482	3/8" PIPE PLUG	2
11	521120	OIL SEAL - 35 X 52 X 7	1
12	521121	PINION SHAFT	1
13	521122	COTTERPIN - B5 X 50	1
14	521123	SHIM - 259.7504 AR (3PC/KIT)	2
15	521124	SPACER TUBE	1
16	521125	SNAP RING - 35 UNI 7435 (3PC/KIT)	1
17	521126	SNAP RING - 72 UNI 7437 (3PC/KIT)	1
18	521127	DOUBLE LIP SEAL - 35 X 72 X 10/8	1
19	521128	SNAP RING - SB72	1
20	521129	WASHER 25 X 44 X 4 (3PC/KIT)	1
21	521130	CASTALATED NUT M24 X 2	1
22	521390	KEY - 1/4" X 1/4" X 1 5/16"	1
23	521359	SHIM	1
24	521360	SHIM 259.7503 AR	1
25	521361	SPACER RING TAPERED	1
26	521362	BEARING TAPERED (30207A)	1
27	521491	SHIM - 248.7505 (KIT) AR	1
28	521491	SHIM - 248.7504 (KIT) AR	1
29	521491	SHIM - 248.7503 (KIT) AR	1
30	521366	SHIM - 259.7505 AR	1
	521012	COMPLETE DECK GEARBOX	1
-	-	NOTE: QUANTITIES ARE FOR ONE COMPLETE MOWER	-
-	-	O.L. - OBTAIN LOCALLY	-

LEFT DECK GEARBOX



LEFT DECK GEARBOX			
ITEM	PART #	DESCRIPTION	QTY
1	521110	SNAP RING	1
2	521203	OUTPUT SHAFT COVER PLATE	1
3	521120	OIL SEAL - 35 X 52 X 7	1
4	521113	KEY - 10 X 8 X 30	1
5	521201	OUTPUT SHAFT - 1 3/8" X 6 SPLINE	1
6	521115	GEAR	1
7	521116	BEARING - 6207	2
8	521117	CASING	1
9	521118	O - RING	1
10	521482	3/8" PIPE PLUG	2
11	521149	CASE PLUG	1
12	521121	PINION SHAFT	1
13	521122	COTTERPIN - B5 X 50	1
14	521123	SHIM - 259.7504 AR (3PC/KIT)	2
15	521124	SPACER TUBE	1
16	521125	SNAP RING - 35 UNI 7435 (3PC/KIT)	1
17	521126	SNAP RING - 72 UNI 7437 (3PC/KIT)	1
18	521127	DOUBLE LIP SEAL - 35 X 72 X 10/8	1
19	521128	SNAP RING - SB72	1
20	521129	WASHER 25 X 44 X 4 (3PC/KIT)	1
21	521130	CASTALATED NUT M24 X 2	1
22	521390	KEY - 1/4" X 1/4" X 1 5/16"	1
24	521360	SHIM 259.7503 AR	1
25	521361	SPACER RING TAPERED	1
26	521362	BEARING TAPERED (30207A)	1
27	521491	SHIM - 248.7505 (KIT) AR	1
28	521491	SHIM - 248.7504 (KIT) AR	1
29	521491	SHIM - 248.7503 (KIT) AR	1
30	521366	SHIM - 259.7505 AR	1
	521033	COMPLETE DECK GEARBOX	1
-	-	NOTE: QUANTITIES ARE FOR ONE COMPLETE MOWER	-
-	-	O.L. - OBTAIN LOCALLY	-

4 – WAY GEARBOX ASSEMBLY

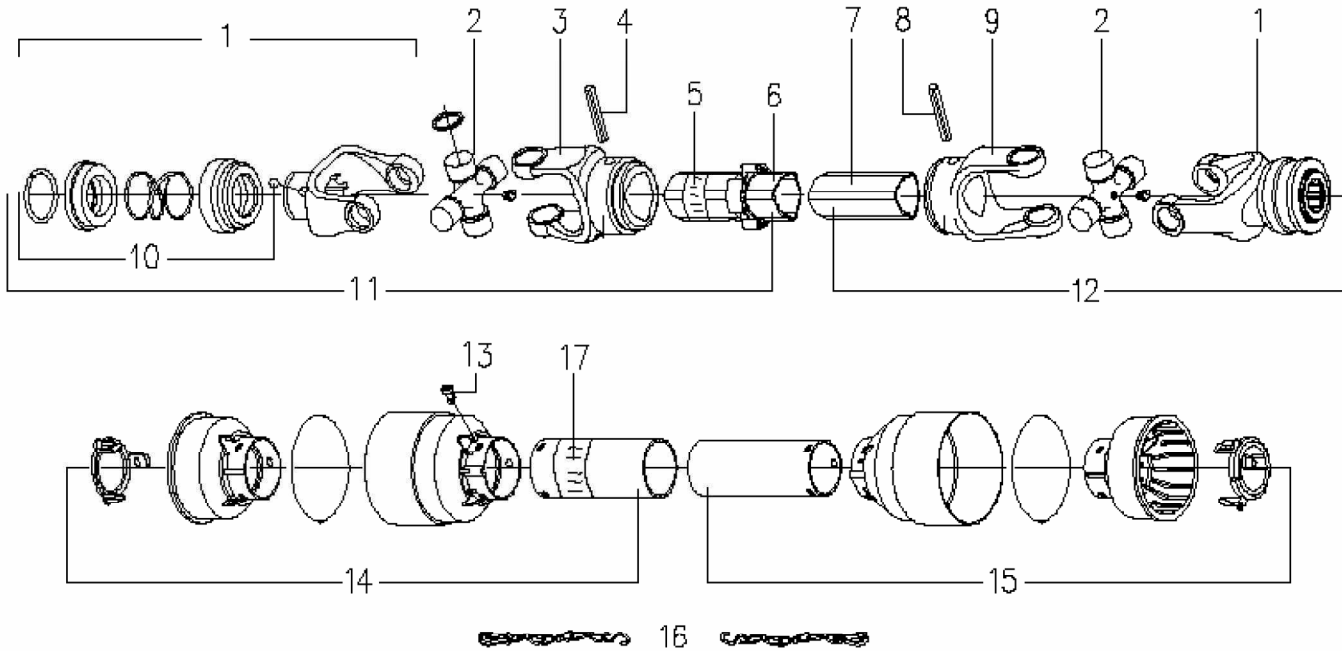


4-WAY GEARBOX ASSEMBLY			
ITEM	PART NO.	DESCRIPTION	QTY
1	521116	BEARING 6207	3
2	521794	SHIM KIT - 48.0	6
3	521127	OIL SEAL - 35 X 72 X 10/7	2
4	521481	STUB SHAFT - 1 3/8" SPLINE	2
5	521137	SNAP RING - 35 UNI 7435	4
6	521482	3/8" PIPE PLUG	2
7	521362	BEARING - 30207	3
8	521483	HOUSING	1
9	ITEM 20	BOLT - M12 X 40 - 10.9	2
10	ITEM 20	WASHER BLANK	2
11	521486	THRU SHAFT 1 3/8" X 1 3/8"	1
12	521120	OIL SEAL - 35 X 52 X 7	2
13	521487	GEAR Z18 M5	3
14	521488	BOLT - M12 X 25 - 8.8 KIT (6 PCS)	2
15	521489	OIL LEVEL DIPSTICK	1
16	521796	EXTENSION HOUSING	2
17	521793	GASKET	3
18	521797	COVER	1
19	521491	WASHER - SHIM (60 X 72) (3 PCS)	1
20	522426	BOLT KIT - ITEMS 9 (2) & 10 (2)	1
*****	521497	COMPLETE GEAR BOX	1
QUANTITIES ARE FOR ONE COMPLETE MOWER			
O.L. - OBTAIN LOCALLY			

WING DECK PTO ASSEMBLY

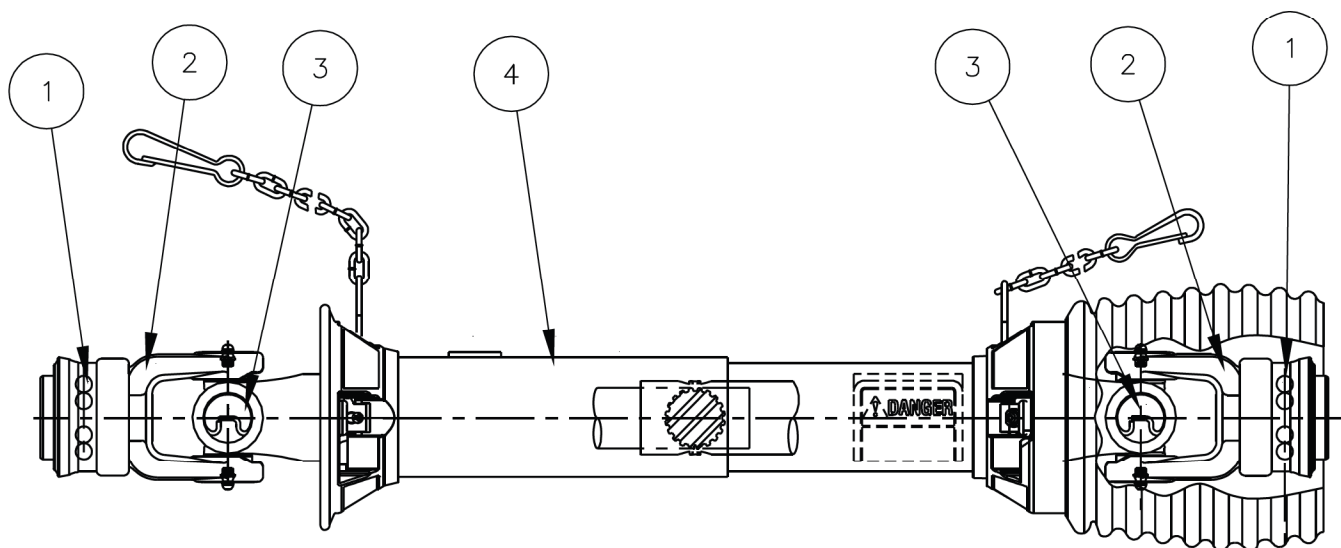
4-WAY GEARBOX END

DECK GEARBOX END



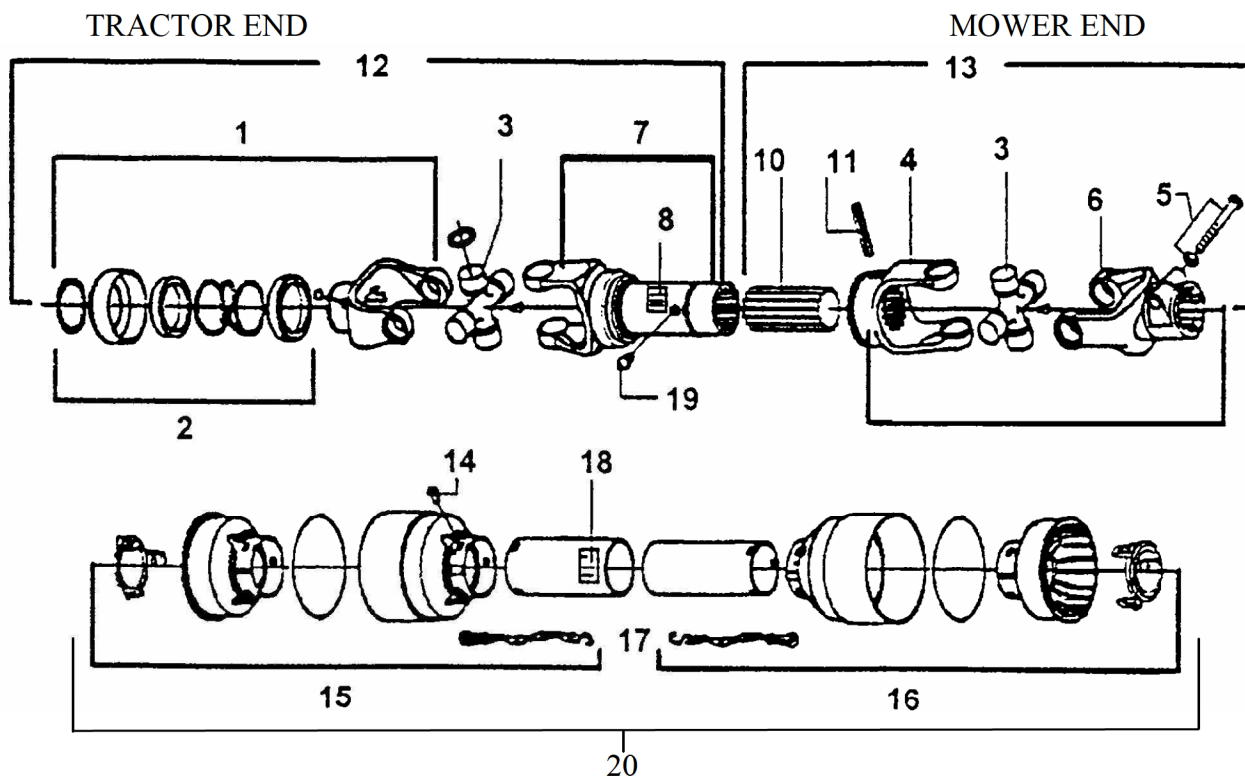
ITEM	PART #	DESCRIPTION	QTY.
1	521778	QD. YOKE 1 3/8" - 6 SPLINE (CO2)	2
2	521779	CROSS & BEARING KIT	2
3	521780	OUTER TUBE YOKE	1
4	521781	ROLL PIN FOR OUTER TUBE	1
5	521451	"DANGER" LABEL FOR OUTER TUBE	1
6	521712	OUTER TUBE	1
7	521713	INNER TUBE	1
8	521782	ROLL PIN FOR INNER TUBE	1
9	521783	INNER TUBE YOKE	1
10	210017	COLLAR KIT (STEEL)	1
	521727	COLLAR KIT (PLASTIC)	
11	521714	1/2 FEMALE SHAFT WITH SHIELDING	1
12	521715	1/2 MALE SHAFT WITH SHIELDING	1
13	521463	PLASTIC SHIELD BOLT (6PC/KIT)	6
14	521716	1/2 FEMALE SHIELD WITH LABEL	1
15	521717	1/2 MALE SHIELD	1
16	521467	SAFETY CHAIN	2
17	521455	"DANGER" LABEL FOR OUTER SHIELD	1
****	521718	COMPLETE PTO SHAFT	2/ MACH
-	-	QUANTITY IS FOR ONE COMPLETE SHAFT	-

REAR DECK PTO SHAFT



ITEM	PART NUMBER	DESCRIPTION	QTY.
1	210196	SPRING-LOK REPAIR KIT	2
2	210192	SPRING-LOK YOKE ASSEMBLY	2
3	210191	CROSS & BEARING KIT	2
4	210195	COMPLETE GUARD SET	1
-	210190	COMPLETE PTO SHAFT	
		QUANTITY IS FOR ONE COMPLETE PTO SHAFT	

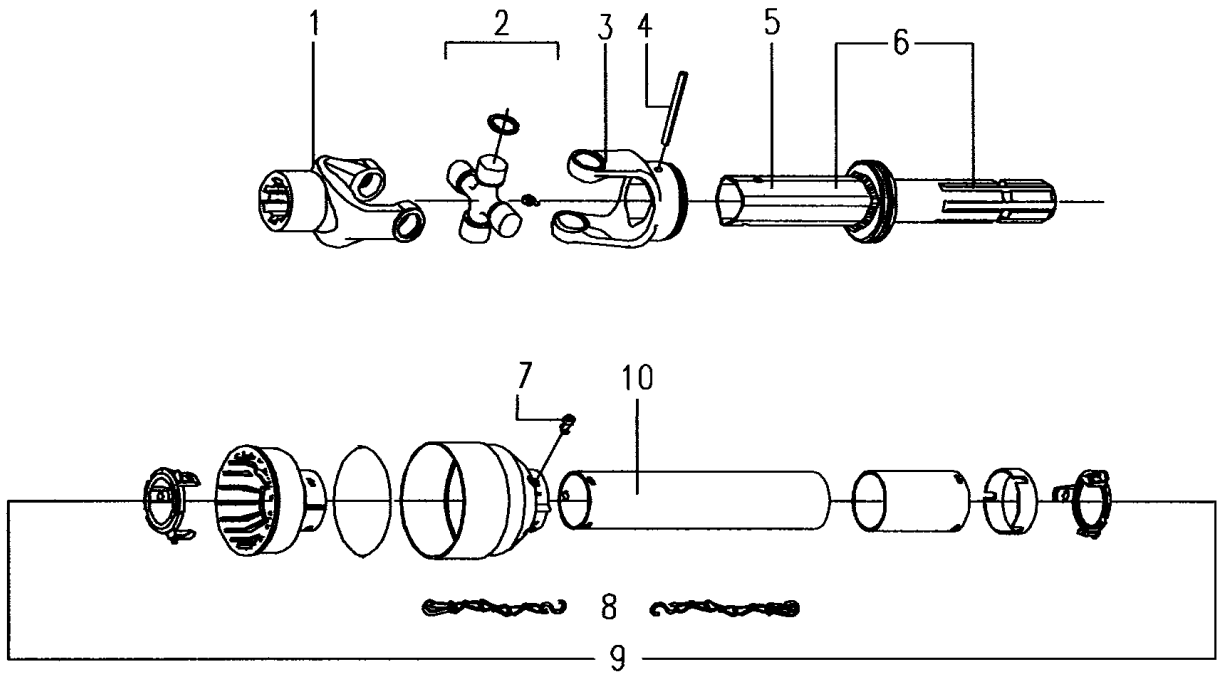
INPUT PTO SHAFT A & C MODELS ONLY



ITEM	PART #	DESCRIPTION	QTY.
1	521726	QD YOKE 1 3/8" - 6 SPLINE (CO2)	1
2	210017	COLLAR KIT - STEEL	1
	521727	COLLAR KIT - PLASTIC	
3	521720	CROSS & BEARING KIT	2
4	521728	INNER TUBE YOKE	1
5	521729	BOLT M12 X 1.25 X 65 NUT	1
6	521730	INTERFERING BOLT CLAMP YOKE	1
7	521731	OUTER TUBE & YOKE WITH LABEL	1
8	521451	"DANGER" DECAL	1
10	521732	SPLINED SHAFT	1
11	521733	ROLL PIN FOR INNER TUBE	1
12	521734	1/2 FEMALE SHAFT WITH SHIELDING	1
13	521735	1/2 MALE SHAFT WITH SHIELDING	1
14	521463	PLASTIC SHIELD BOLT (6PC/KIT)	6
15	521736	1/2 FEMALE SHIELD WITH LABEL	1
16	521737	1/2 MALE SHIELD	1
17	521467	SAFETY CHAIN	2
18	521455	"DANGER" LABEL FOR OUTER SHIELD	1
19	521821	GREASE FITTING	2
20	521768	COMPLETE SHIELD KIT	1
****	521738	COMPLETE PTO SHAFT	1

**QTY.- REPRESENTS TOTAL NUMBER REQUIRED
FOR ONE INPUT PTO ASSEMBLY ONLY.**

INTERMEDIATE PTO SHAFT A & C MODELS ONLY

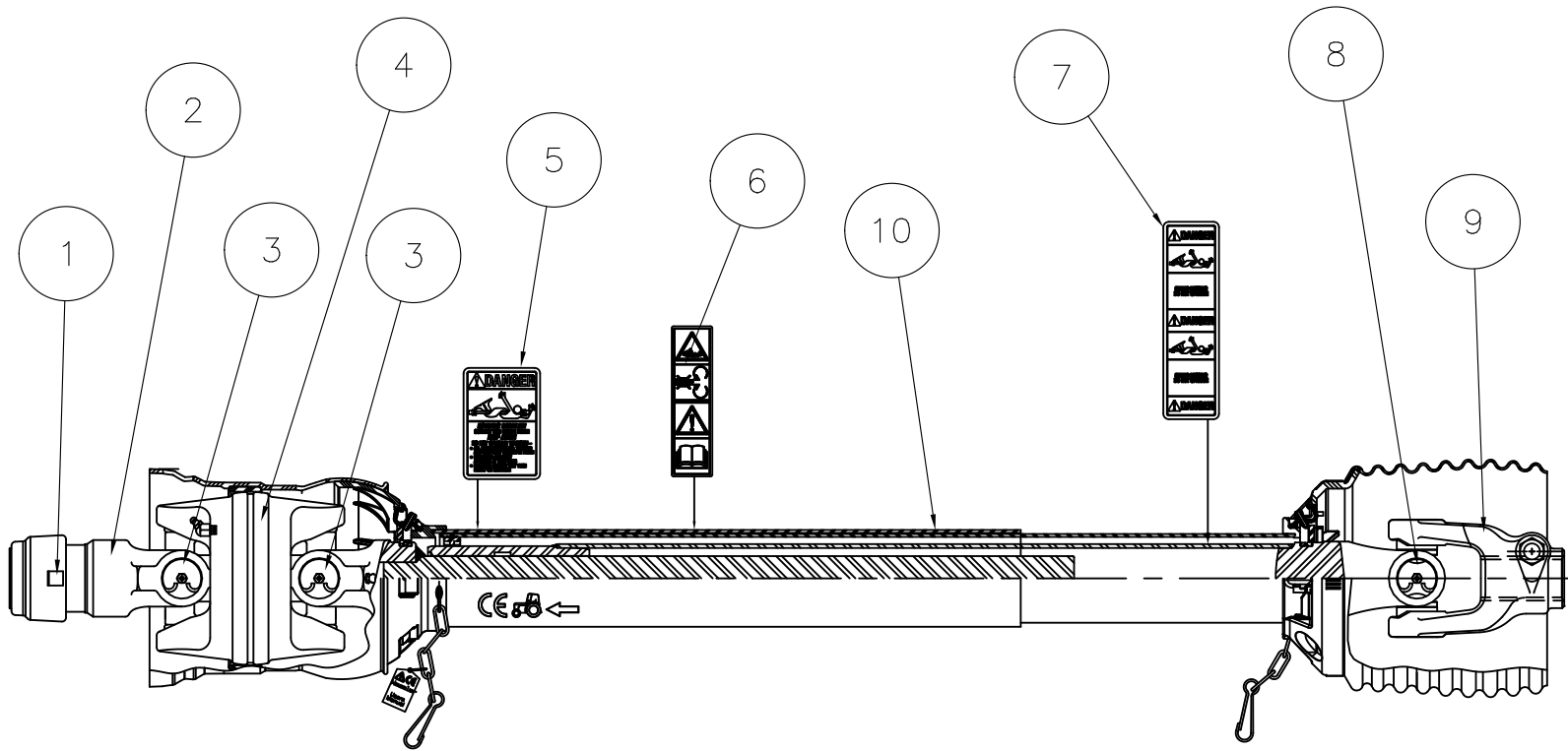


ITEM	PART #	DESCRIPTION	QTY.
1	521719	SPLINED YOKE	1
2	521720	CROSS & BEARING KIT	1
3	521721	YOKE FOR OUTER TUBE	1
4	521722	ROLL PIN FOR OUTER TUBE	1
5	521451	"DANGER" LABEL FOR TUBE	1
6	521723	OUTER TUBE WITH SPLINED SHAFT	1
7	521463	PLASTIC SHIELD BOLT (6PC/KIT)	6
8	521467	SAFETY CHAIN	2
9	521724	COMPLETE SHIELD TYPE "P" WITH LABEL	1
10	521455	"DANGER" LABEL FOR OUTER SHIELD	1
****	521725	COMPLETE PTO ASSEMBLY	1

**QTY.- REPRESENTS TOTAL NUMBER REQUIRED
FOR ONE INTERMEDIATE PTO ASSEMBLY ONLY.**

See
Service
Bulletin
521725
PTO Shaft;
Page 30

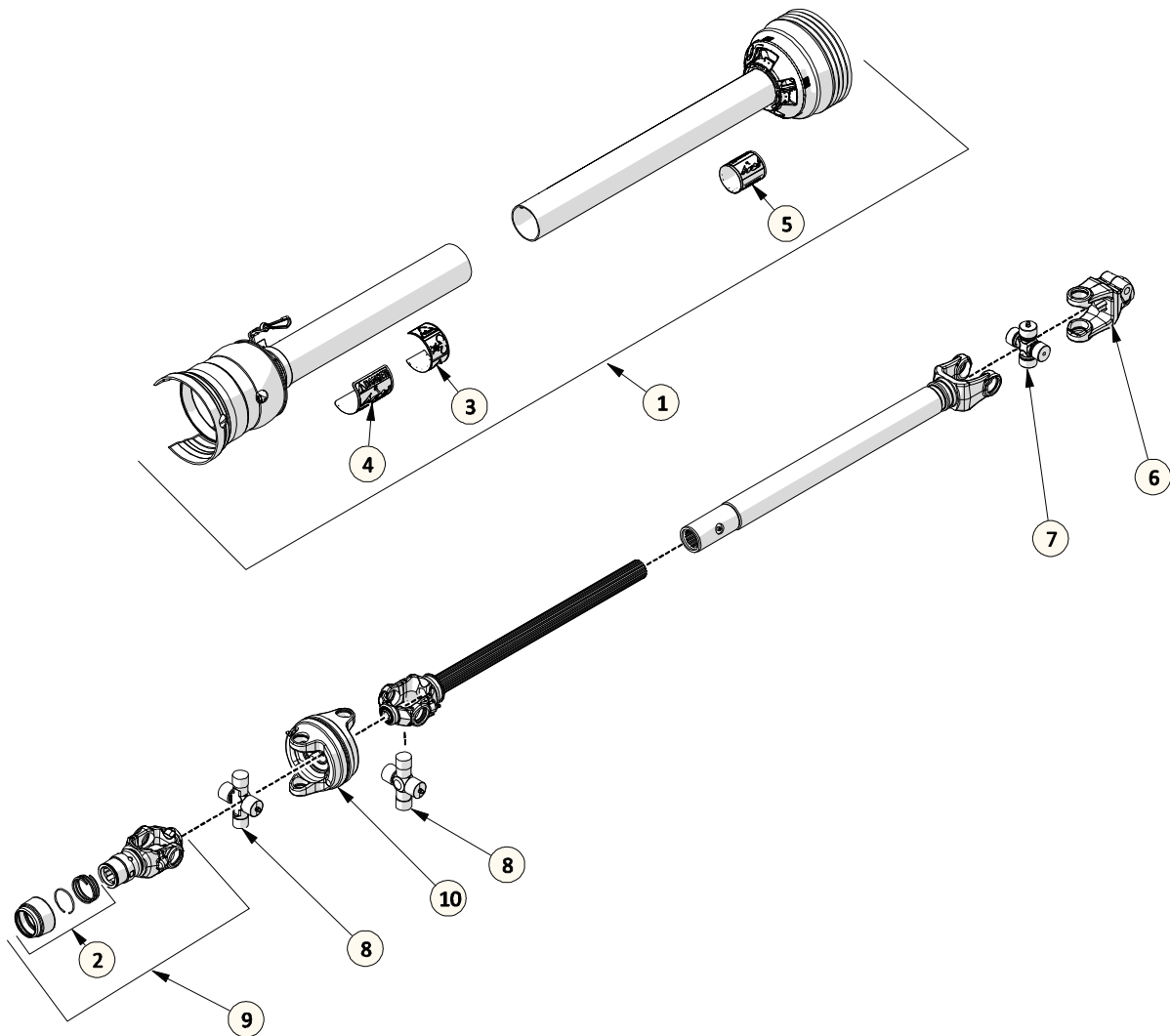
INPUT PTO SHAFT B MODEL ONLY



	PART NUMBER	DESCRIPTION	QTY.
1	210179	SSL/AUTO-LOK REPAIR KIT	1
2	210231	SAFETY SLIDE LOCK YOKE ASM.	1
3	210232	CAT 4 80° E2BL CROSS & BEARING KIT	2
4	210233	CENTER HOUSING	1
5	210237	GUARD SAFETY SIGN	1
6	210238	CE WARNING DECAL	1
7	210239	SHAFT SAFETY SIGN	1
8	210234	35E2BL CROSS & BEARING KIT	1
9	210235	YOKE	1
10	210236	COMPLETE GUARD SET	1
	210230	COMPLETE INPUT SHAFT	1
		QUANTITY IS FOR ONE COMPLETE SHAFT	

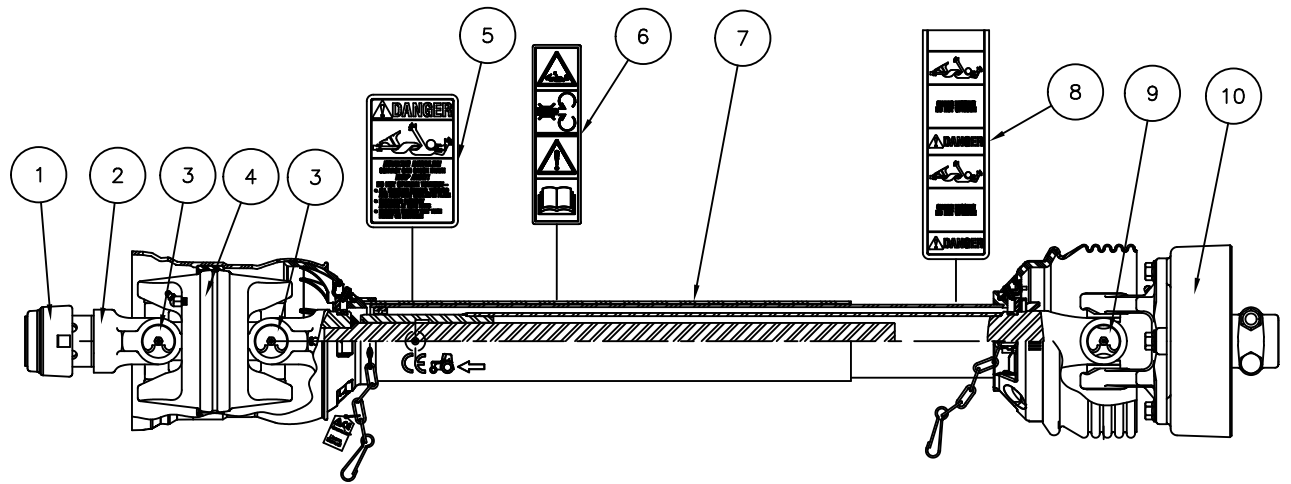
TDR 15: UP TO SERIAL #1115096B
TDR 12: UP TO SERIAL #1212028B

INPUT PTO SHAFT – B MODELS **TDR 15: SERIAL #1215102B AND UP** **TDR 12: SERIAL #1312031B AND UP**



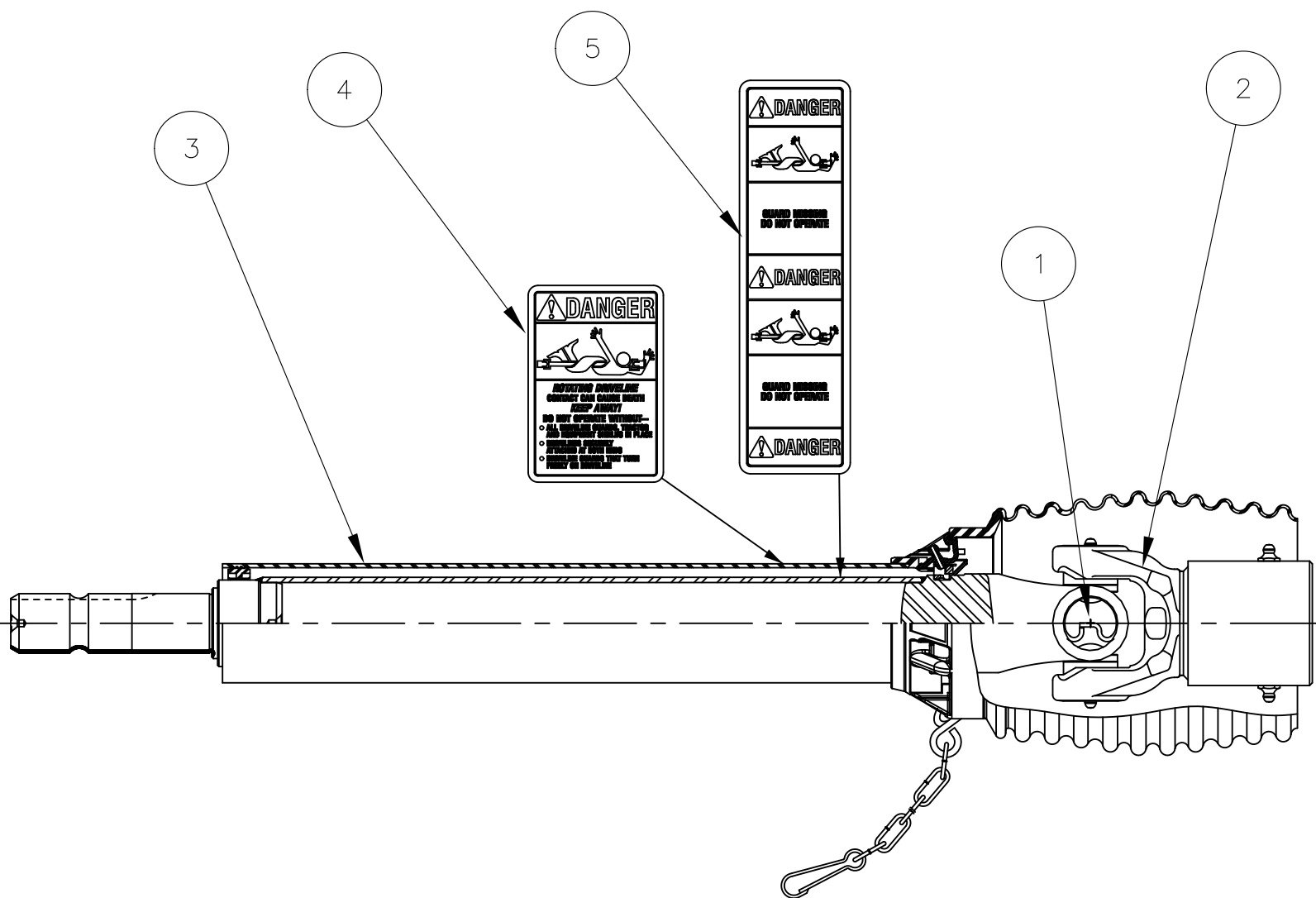
ITEM	PART #	DESCRIPTION	QTY
1	210286	COMPLETE GUARD SET	1
2	210179	SLIDE LOCK REPAIR KIT (44E)	1
3	210238	CE WARNING DECAL	1
4	210237	SAFETY SIGN - OUTER GUARD	1
5	210239	SAFETY SIGN - INNER GUARD	1
6	210235	35 SERIES CLAMP YOKE	1
7	210234	35E2BL CROSS KIT	1
8	210284	CAT 4 80 EBL CROSS & BRG KIT	2
9	210283	AUTO LOK YOKE ASSEMBLY	1
10	210281	CENTER HOUSING	1
11	210280	INPUT PTO CAT 4-80 DEG CV (COMPLETE)	1

INPUT PTO SHAFT D MODEL ONLY



ITEM	PART NUMBER	DESCRIPTION	QTY.
1	210179	AUTO-LOK REPAIR KIT	1
2	210231	AUTO-LOK YOKE ASSEMBLY	1
3	210232	CROSS & BEARING KIT	2
4	210233	CENTER HOUSING	1
5	210237	GUARD SAFETY SIGN	1
6	210238	C.E. WARNING DECAL	1
7	210255	COMPLETE GUARD SET	1
8	210239	SHAFT SAFETY SIGN	1
9	210234	CROSS & BEARING KIT	1
10	210257	AUTOMATIC CLUTCH ASM.	1
-	210250	COMPLETE PTO SHAFT	
		QUANTITY IS FOR ONE COMPLETE PTO SHAFT	

INTERMEDIATE SHAFT B & D MODELS ONLY



ITEM	PART NUMBER	DESCRIPTION	QTY
1	210234	35E2BL CROSS & BEARING KIT	1
2	210212	OVERRUNNING CLUTCH ASM	1
3	210211	GUARD	1
4	210237	GUARD SAFETY SIGN	1
5	210239	SHAFT SAFETY SIGN	1
	210210	COMPLETE PTO SHAFT	1
		QUANTITY IS FOR ONE COMPLETE PTO SHAFT	

Service Bulletin: 521725 PTO Shaft

Part #521725, Intermediate Z50 shaft used on Pro-flex 120/TD65/TD65-2

For a period between 2003 and 2006, this PTO shaft was changed to one with a new shield. The shielding seen in "Diagram 1A" was used before this, and was changed to shielding seen in "Diagram 2B" for this period of time. See diagrams below on page.

If your Progressive Mower has an intermediate shaft with shielding as seen in "Diagram 2B", the parts breakdown listing for the inner yoke found in your machine parts book is incorrect. Part #521721 (Yoke - Outer Tube) must be changed to Part #521721.50 (Yoke - Inner Tube). The size of hole for mounting yoke on the shaft is different in each application.

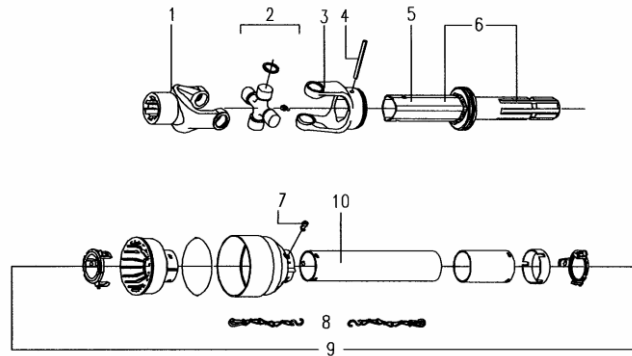
Diagram 1A



Diagram 2B



INTERMEDIATE PTOSHAFT A & C MODELS ONLY



INTERMEDIATE PTO SHAFT

	1A	2B		
ITEM	PN	PN	DESCRIPTION	QTY.
1	521719	521719	SPLINED YOKE	1
2	521720	521720	CROSS & BEARING KIT	1
3	521721	521721.50	YOKE FOR OUTER TUBE	1
4	521722	521722	ROLL PIN FOR OUTER TUBE	1
5	521451	521451	"DANGER" LABEL FOR TUBE	1
6	521723	522050	OUTER TUBE WITH SPLINED SHAFT	1
7	521463	521463	PLASTIC SHIELD BOLT (6PC/KIT)	6
8	521467	521467	SAFETY CHAIN	2
9	521724	522060	COMPLETE SHIELD TYPE "P" WITH LABEL	1
10	521455	521455	"DANGER" LABEL FOR OUTER SHIELD	1
****	521725		COMPLETED	1

**HIGHLIGHTED PARTS ARE REQUIRED FOR SHAFT 2B SERVICE PARTS
QTY.- REPRESENTS TOTAL NUMBER REQUIRED
FOR ONE INTERMEDIATE PTO ASSEMBLY ONLY**